

VILLA ALCALÁ 70 | Nueva Andalucía



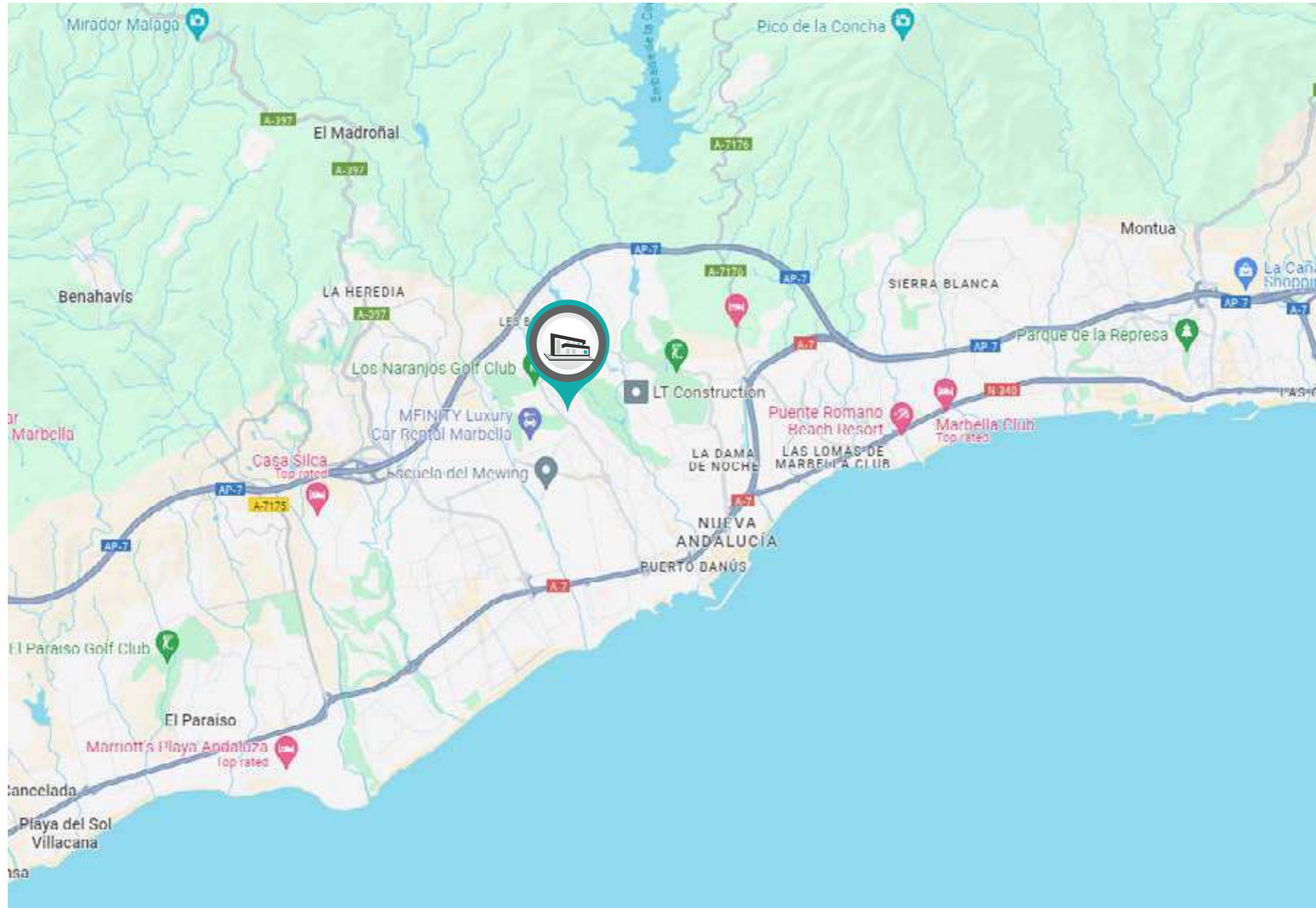
COGITARI HOMES

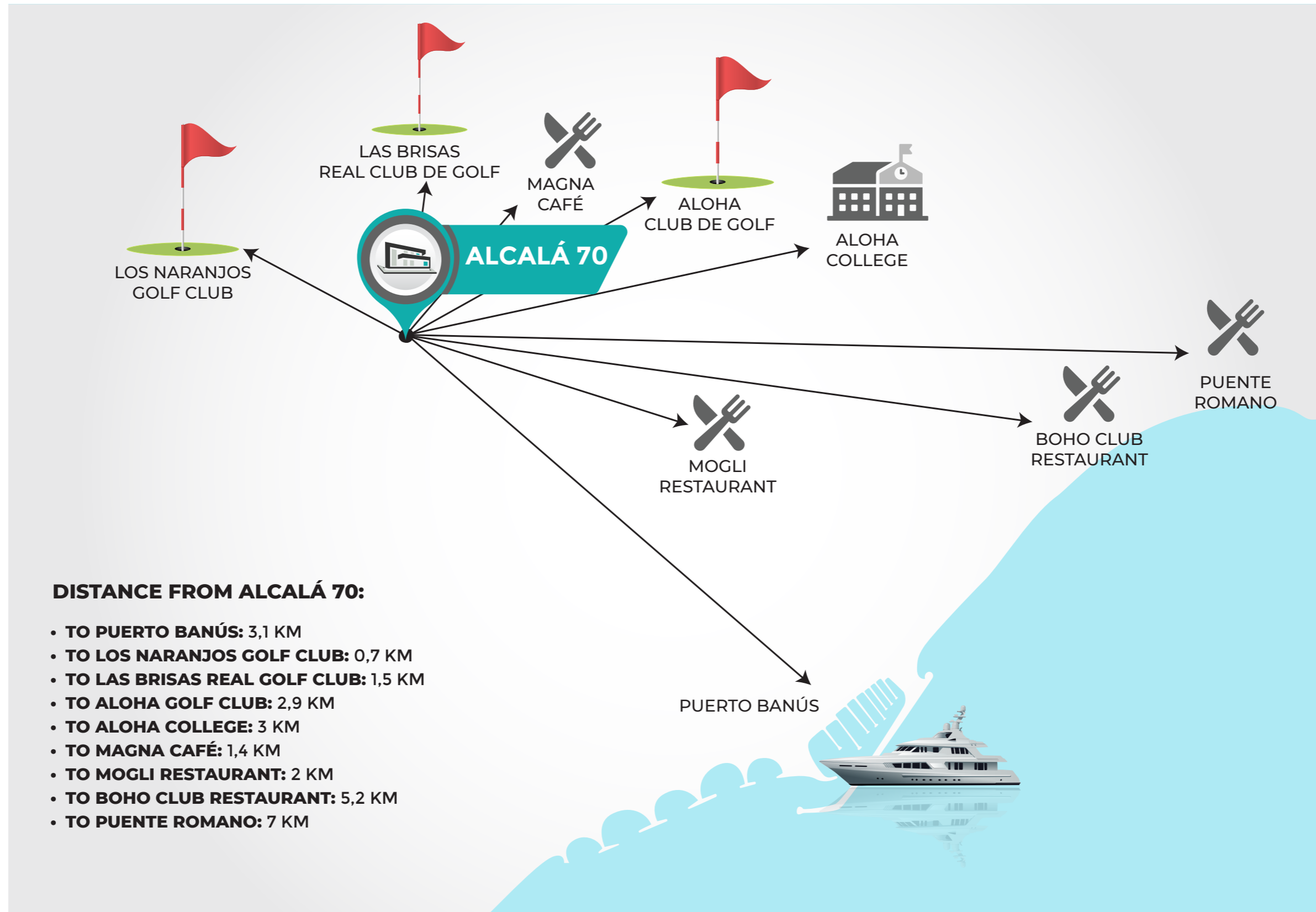


VILLA ALCALÁ 70 | Nueva Andalucía



COGITARI HOMES

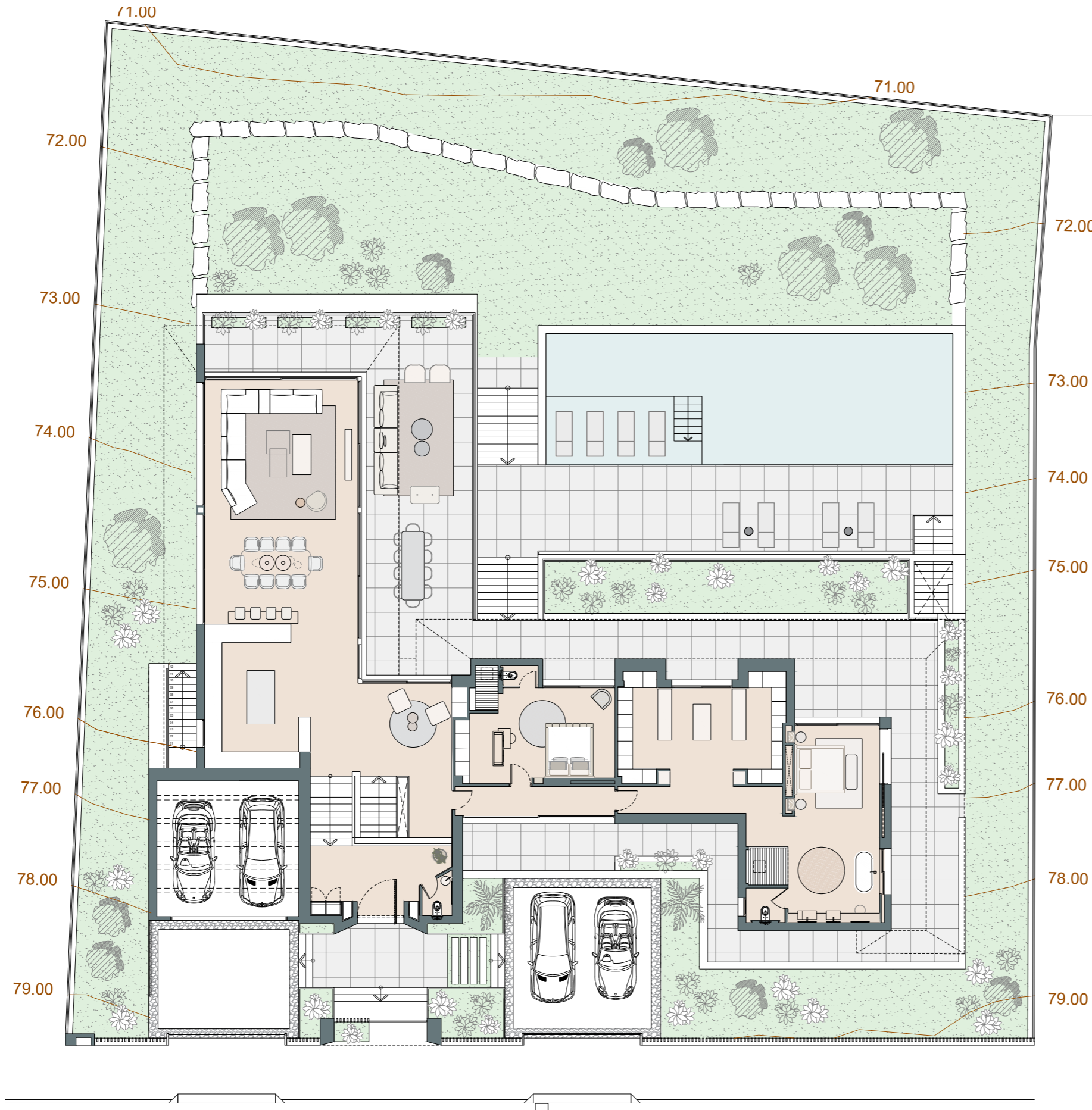




VILLA ALCALÁ 70 | Nueva Andalucía | Site Plan







COGITARI HOMES

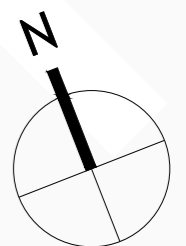


Villa Alcalá 70

Built closed area	986,92 m ²
Covered terrace	142,50 m ²
Open terrace	288,27 m ²
Open terrace pergola	98,10 m ²
Total terrace	528,87 m ²
Parking pergola	40,71 m ²
Pool	98,93 m ²
Total built area	1.651,43 m²

5 5 1.651,43 m² 4



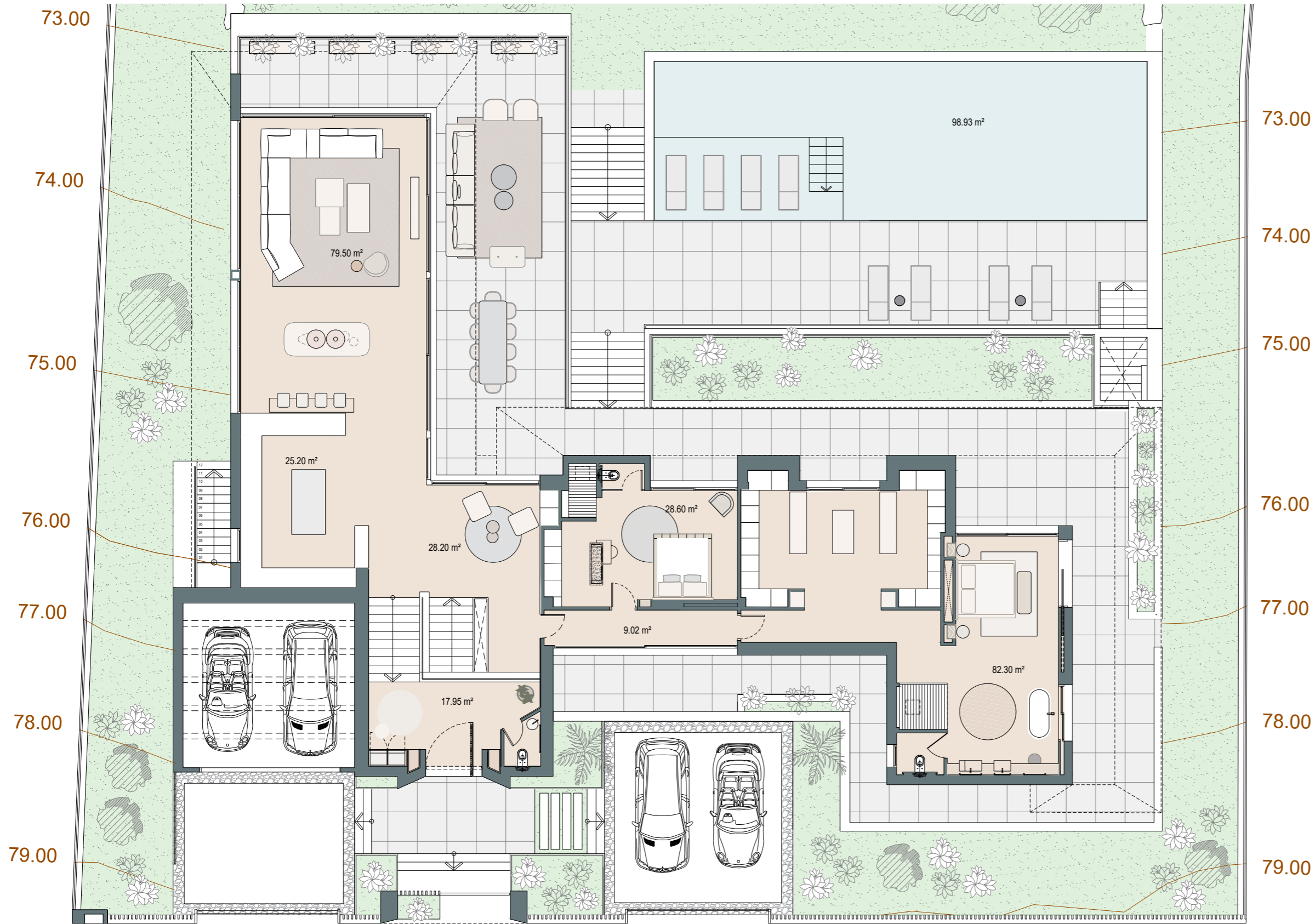
1m 2m 3m 4m 5m
SCALE 1:200

This document is for information only. The areas and measurements are approximate and may be modified for technical reasons and/or administrative issues. The room areas marked on the drawing are usable space.

VILLA ALCALÁ 70 | Nueva Andalucía | Ground floor







COGITARI HOMES

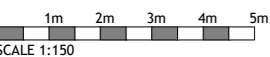
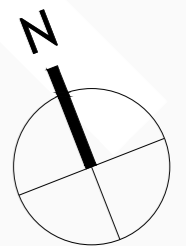


Villa Alcalá 70

Built closed area	986,92 m ²
Covered terrace	142,50 m ²
Open terrace	288,27 m ²
Open terrace pergola	98,10 m ²
Total terrace	528,87 m ²
Parking pergola	40,71 m ²
Pool	98,93 m ²
Total built area	1.651,43 m²

5 5 1.651,43 m² 4

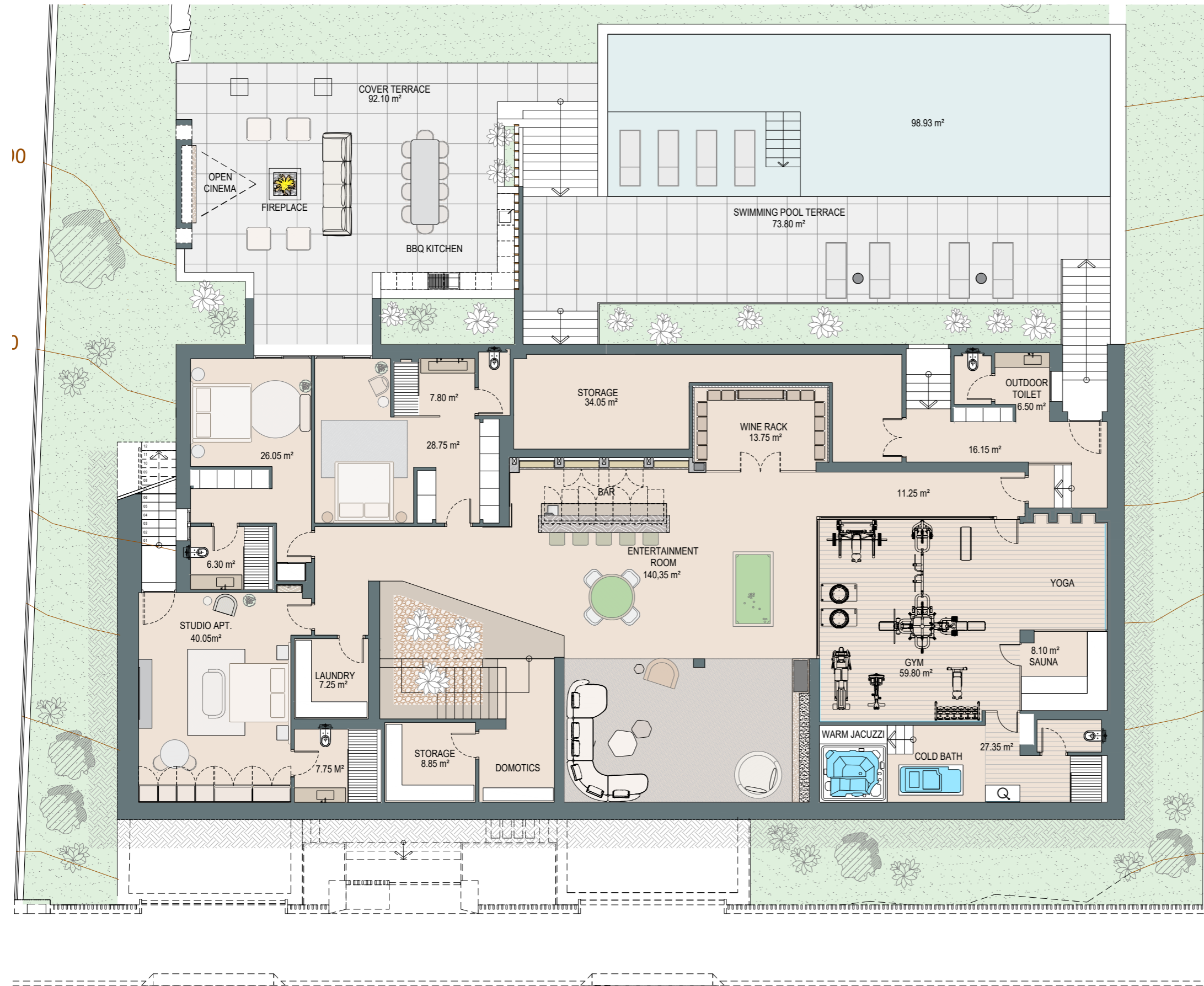


This document is for information only. The areas and measurements are approximate and may be modified for technical reasons and/or administrative issues. The room areas marked on the drawing are usable space.

VILLA ALCALÁ 70 | Nueva Andalucía | Entertainment level



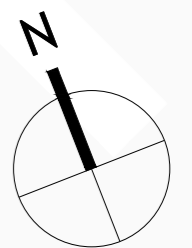
COGITARI HOMES



Villa Alcalá 70

Built closed area	986,92 m ²
Covered terrace	142,50 m ²
Open terrace	288,27 m ²
Open terrace pergola	98,10 m ²
Total terrace	528,87 m ²
Parking pergola	40,71 m ²
Pool	98,93 m ²
Total built area	1.651,43 m²

5
 5
 1.651,43 m²
 4



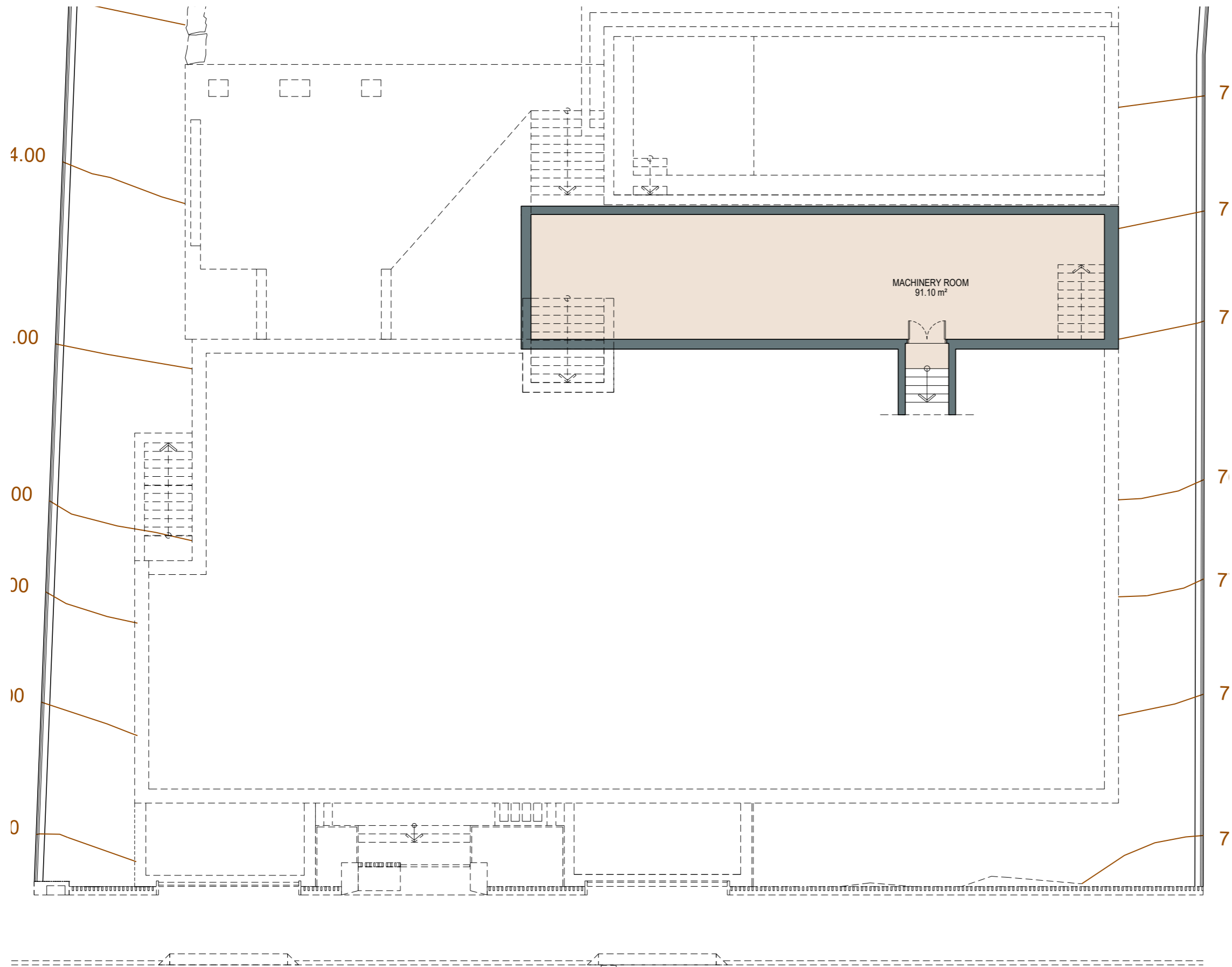
1m 2m 3m 4m 5m
LE 1:150

This document is for information only. The areas and measurements are approximate and may be modified for technical reasons and/or administrative issues. The room areas marked on the drawing are usable space.

VILLA ALCALÁ 70 | Nueva Andalucía | Basement -2







COGITARI HOMES

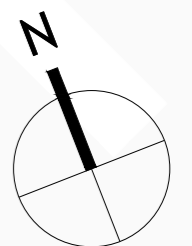


Villa Alcalá 70

Built closed area	986,92 m ²
Covered terrace	142,50 m ²
Open terrace	288,27 m ²
Open terrace pergola	98,10 m ²
Total terrace	528,87 m ²
Parking pergola	40,71 m ²
Pool	98,93 m ²
Total built area	1.651,43 m²

5 5 1.651,43 m² 4



1m 2m 3m 4m 5m
 LE 1:150

This document is for information only. The areas and measurements are approximate and may be modified for technical reasons and/or administrative issues. The room areas marked on the drawing are usable space.



VILLA ALCALÁ 70 | Nueva Andalucía



COGITARI HOMES



VILLA ALCALÁ 70 | Nueva Andalucía



COGITARI HOMES



VILLA ALCALÁ 70 | Nueva Andalucía



COGITARI HOMES





















