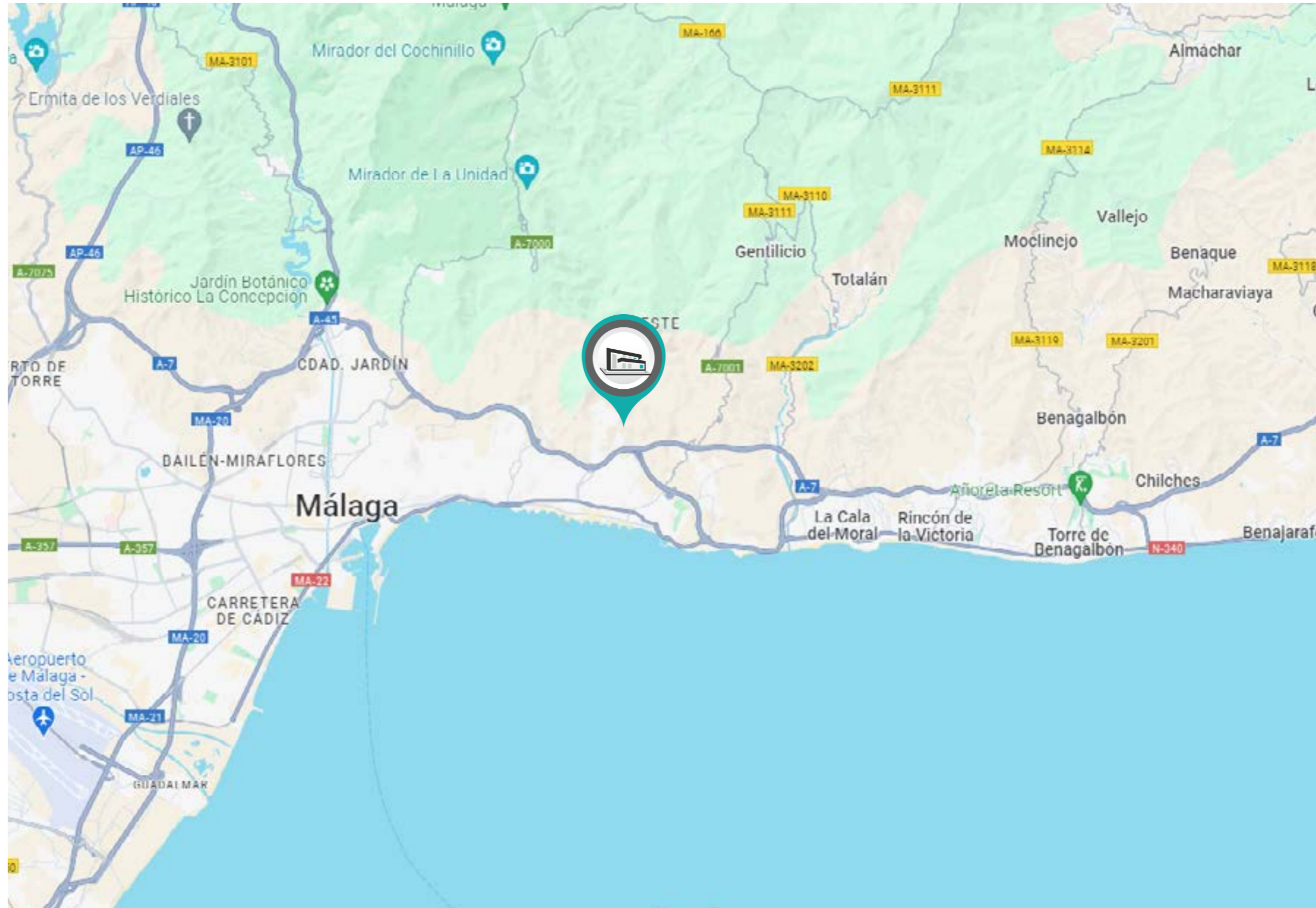


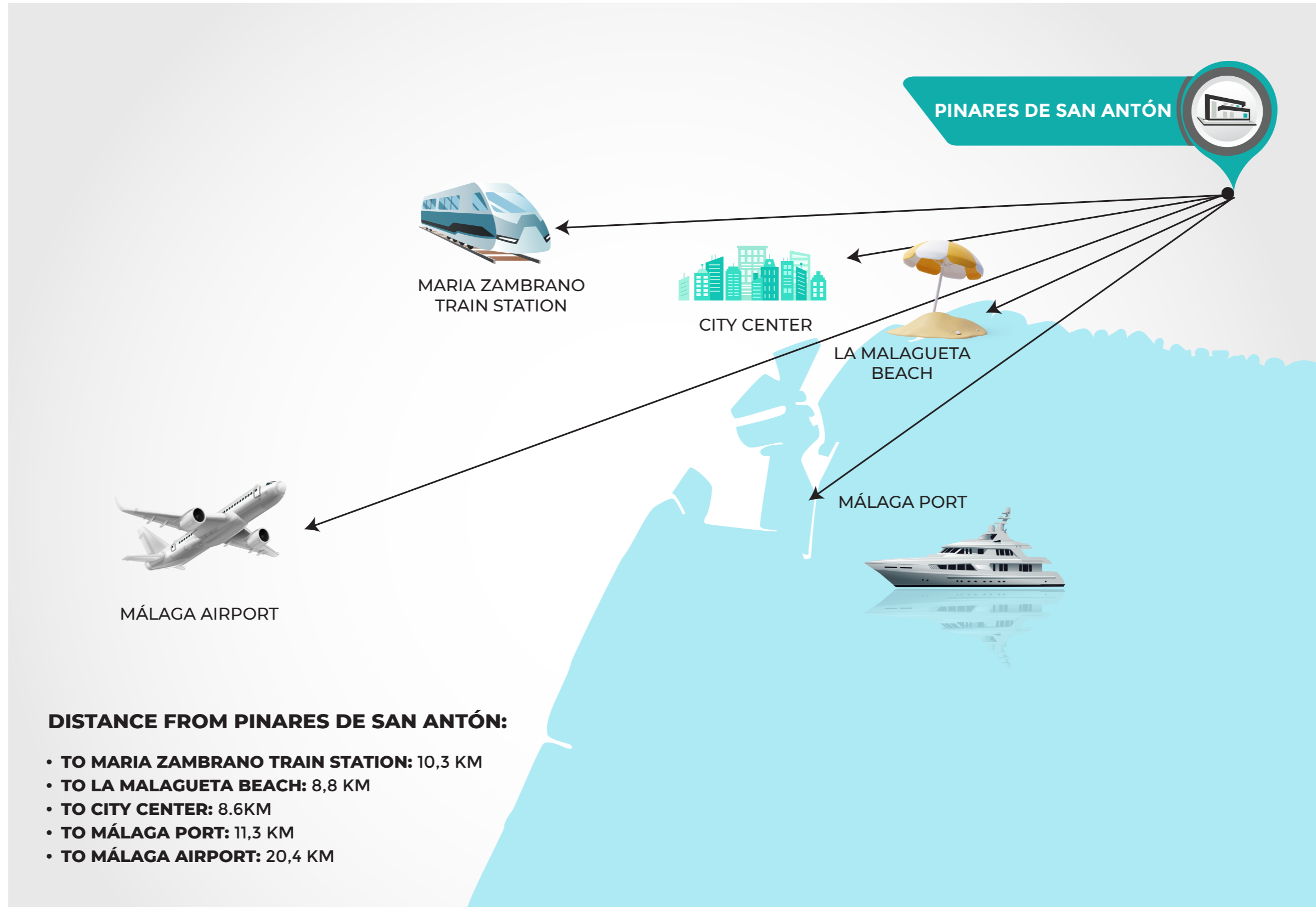


PINARES DE SAN ANTÓN | VILLA 7



COGITARI HOMES

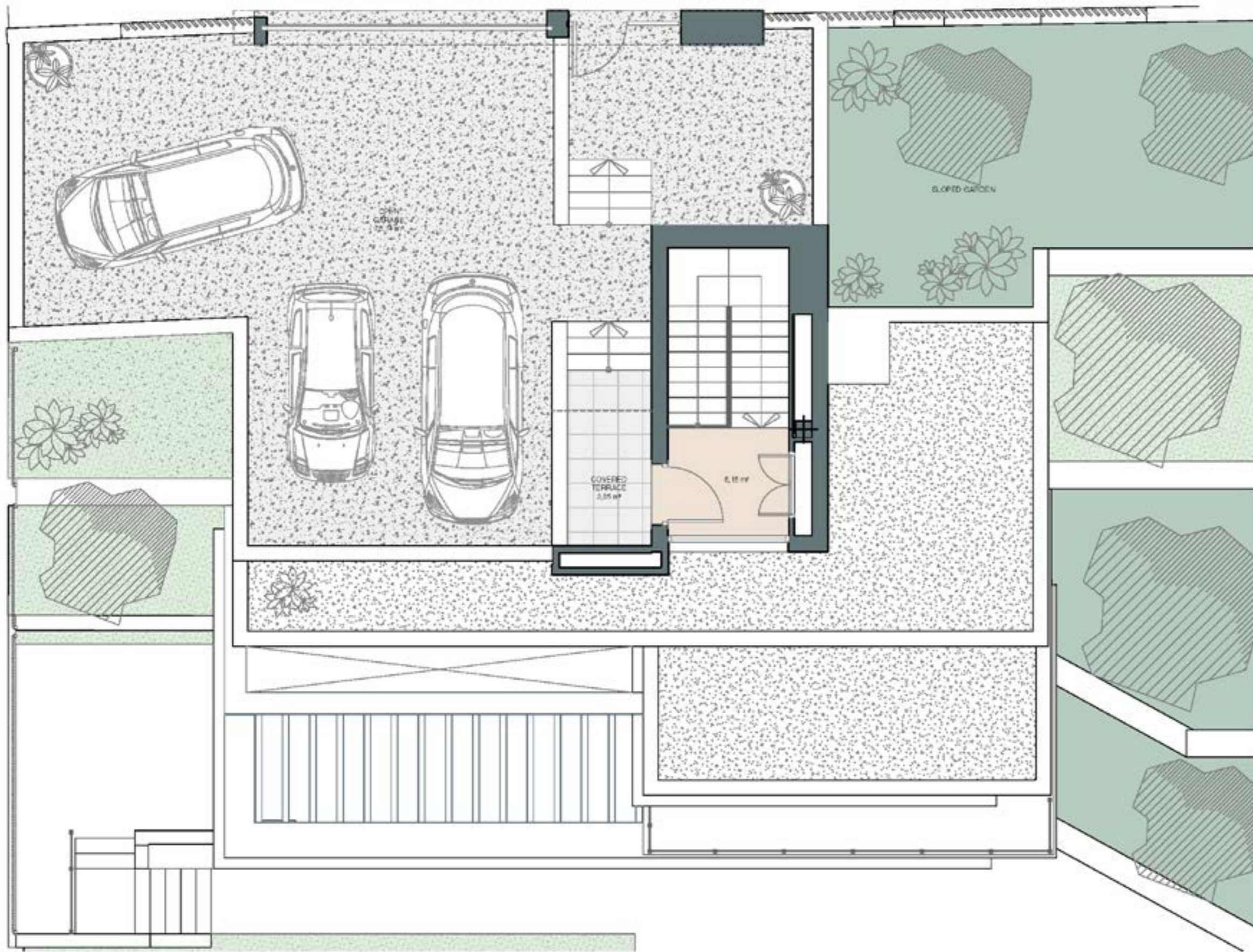




PINARES DE SAN ANTÓN | VILLA 7 | Entrance Level







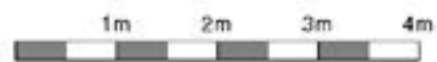
COGITARI HOMES



Villa 7

Built closed area	309 m ²
Covered terrace	65 m ²
Open terrace	83 m ²
Open terrace pergola	22 m ²
Total terrace	170 m²
Pool 9 x 3,80m	34 m ²
Total built area	513 m²
Plot area	915 m²

 4
  3
  309 m²
 4



This document is for information only. The areas and measurements are approximate and may be modified for technical reasons and/or administrative issues. The room areas marked on the drawing are usable space.



PINARES DE SAN ANTÓN | VILLA 7 | Level +1







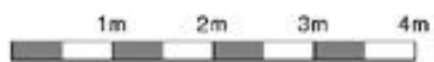
COGITARI HOMES



Villa 7

Built closed area	309 m ²
Covered terrace	65 m ²
Open terrace	83 m ²
Open terrace pergola	22 m ²
Total terrace	170 m²
Pool 9 x 3,80m	34 m ²
Total built area	513 m²
Plot area	915 m²

 4
  3
  309 m²
 4



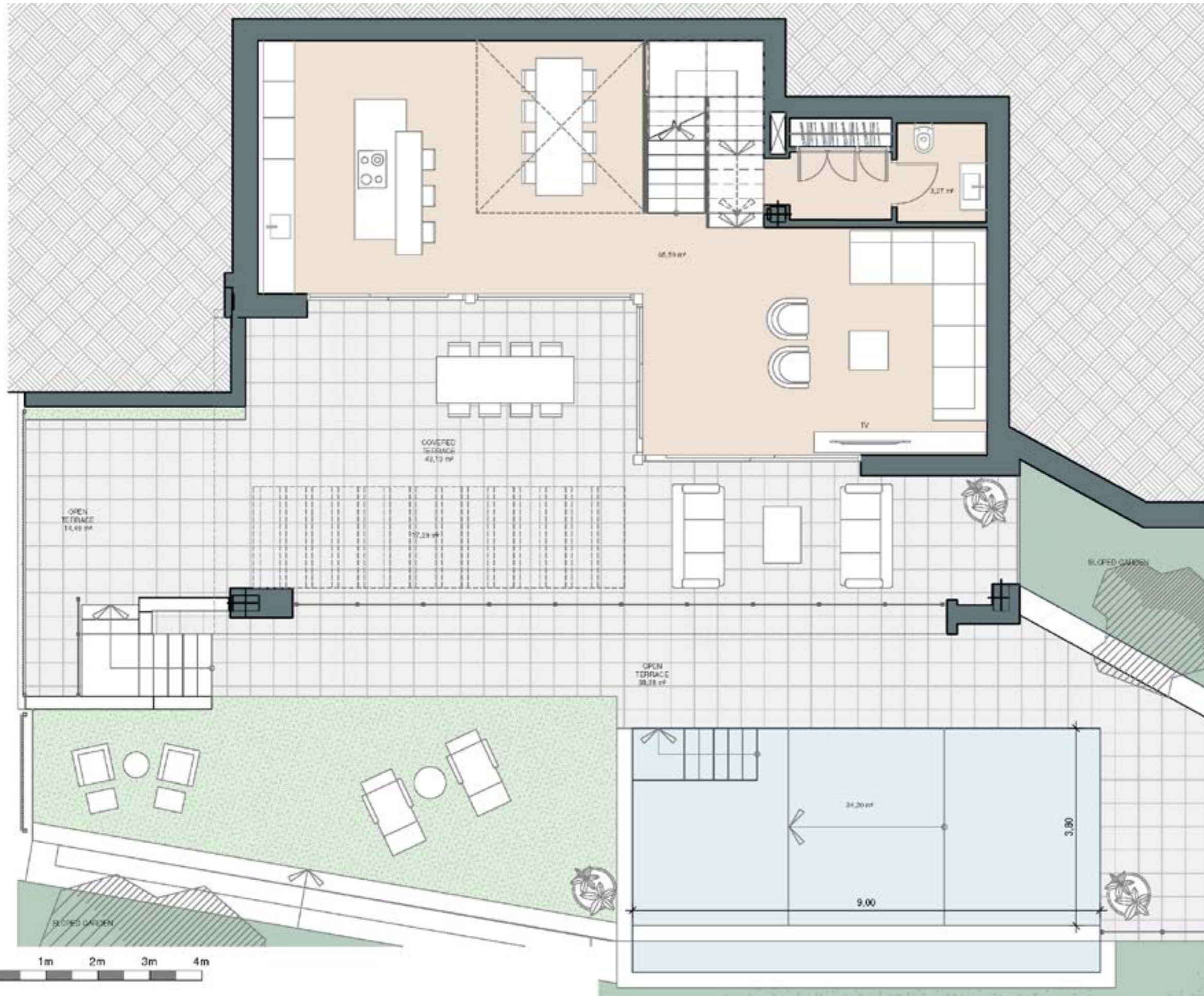
This document is for information only. The areas and measurements are approximate and may be modified for technical reasons and/or administrative issues. The room areas marked on the drawing are usable space.



PINARES DE SAN ANTÓN | VILLA 7 | Entertainment level







COGITARI HOMES



Villa 7

Built closed area	309 m ²
Covered terrace	65 m ²
Open terrace	83 m ²
Open terrace pergola	22 m ²
Total terrace	170 m²
Pool 9 x 3,80m	34 m ²
Total built area	513 m²
Plot area	915 m²

 4
  3
  309 m²
 4

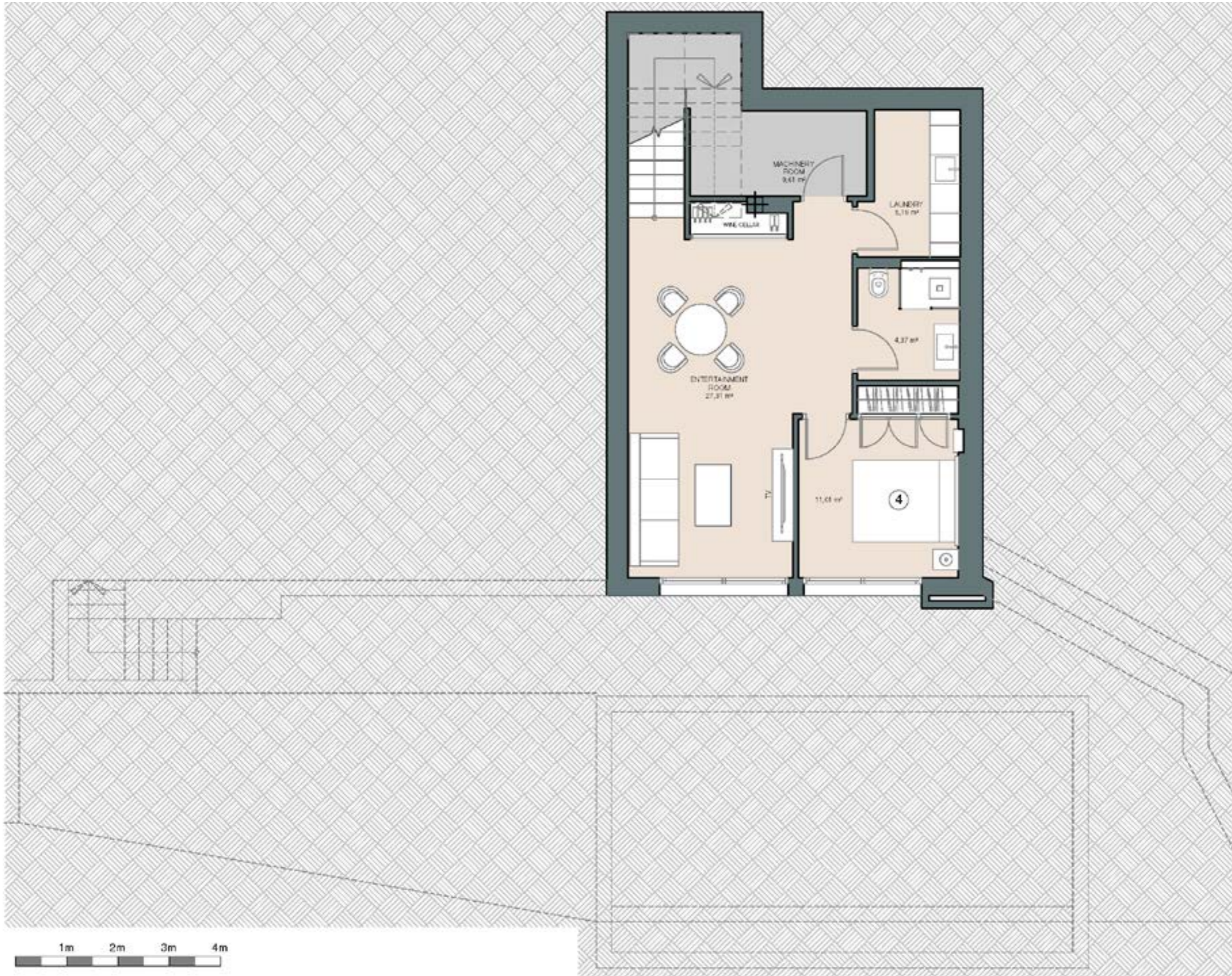


This document is for information only. The areas and measurements are approximate and may be modified for technical reasons and/or administrative issues. The room areas marked on the drawing are usable space.

PINARES DE SAN ANTÓN | VILLA 7 | Ground Floor

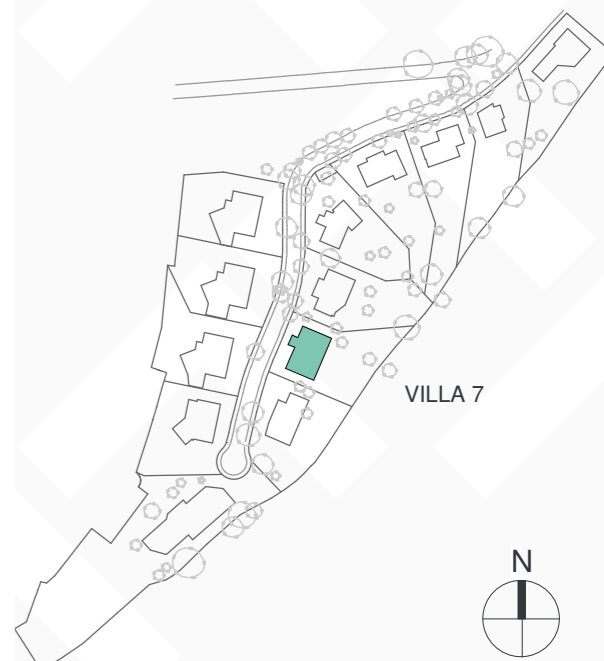
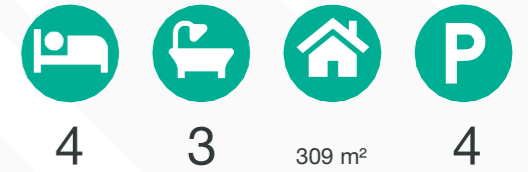


COGITARI HOMES



Villa 7

Built closed area	309 m ²
Covered terrace	65 m ²
Open terrace	83 m ²
Open terrace pergola	22 m ²
Total terrace	170 m²
Pool 9 x 3,80m	34 m ²
Total built area	513 m²
Plot area	915 m²



This document is for information only. The areas and measurements are approximate and may be modified for technical reasons and/or administrative issues. The room areas marked on the drawing are usable space.

PINARES DE SAN ANTÓN | VILLA 7



COGITARI HOMES

















