



VILLA C. GATE 3


Built closed area	577,75 m ²
Covered terrace	55,15 m ²
Open terrace	352,60 m ²
Open terrace pergola	20,00 m ²
Total terrace	427,75 m ²
Pool	51,50 m ²
Total built area	1.057,00 m ²




5



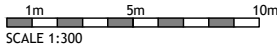
6



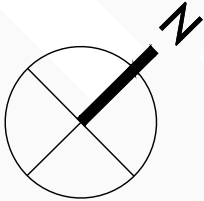
1.057,00 m²



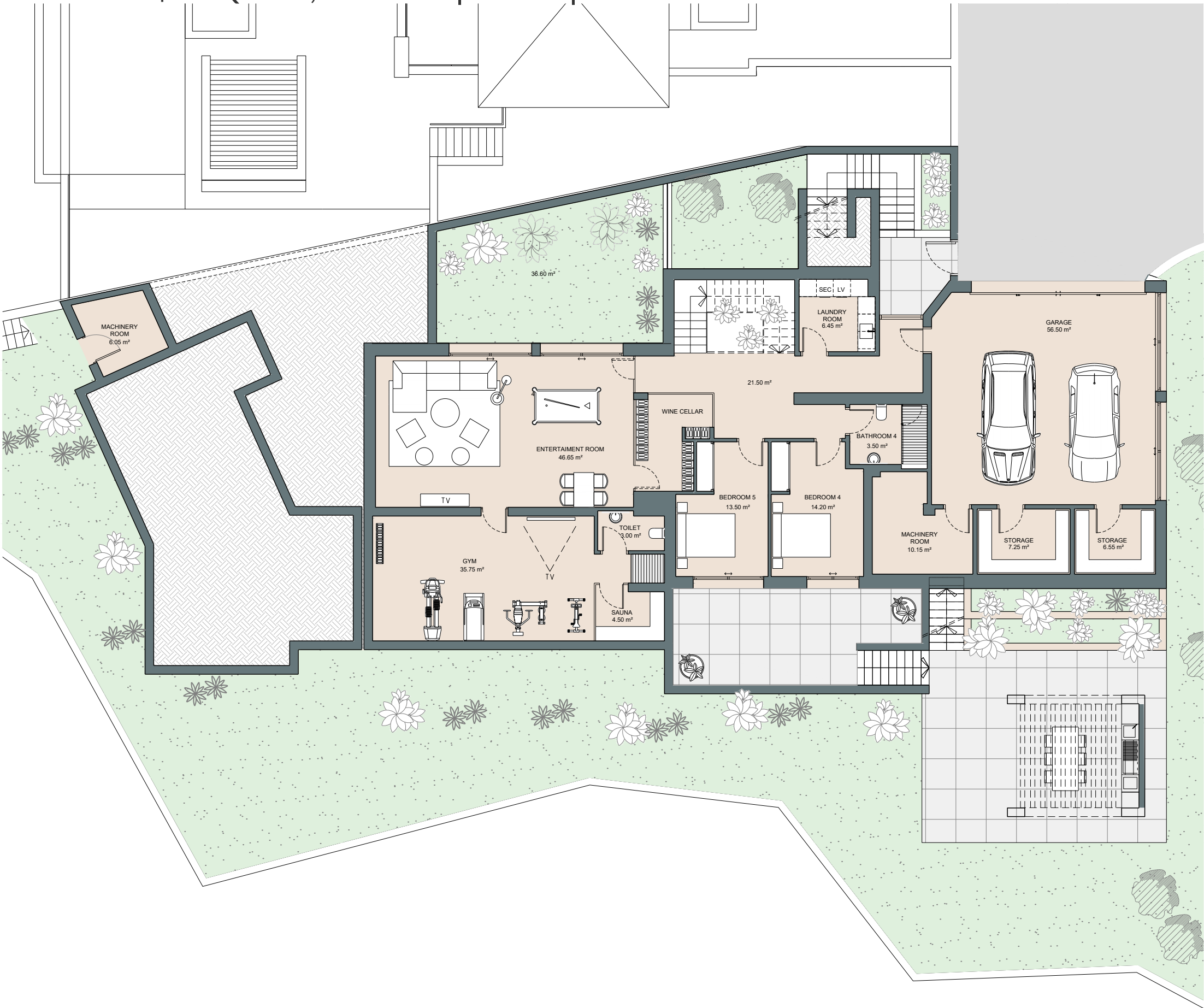
2



This document is for information only. The areas and measurements are approximate and may be modified for technical reasons and/or administrative issues. The room areas marked on the drawing are usable space.





GATE 3 | La Quinta, Marbella | Villa C | Entertainment level





VILLA C. GATE 3

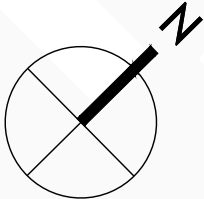
Built closed area	577,75 m ²
Covered terrace	55,15 m ²
Open terrace	352,60 m ²
Open terrace pergola	20,00 m ²
Total terrace	427,75 m ²
Pool	51,50 m ²
Total built area	1.057,00 m ²


5


6


1.057,00 m²

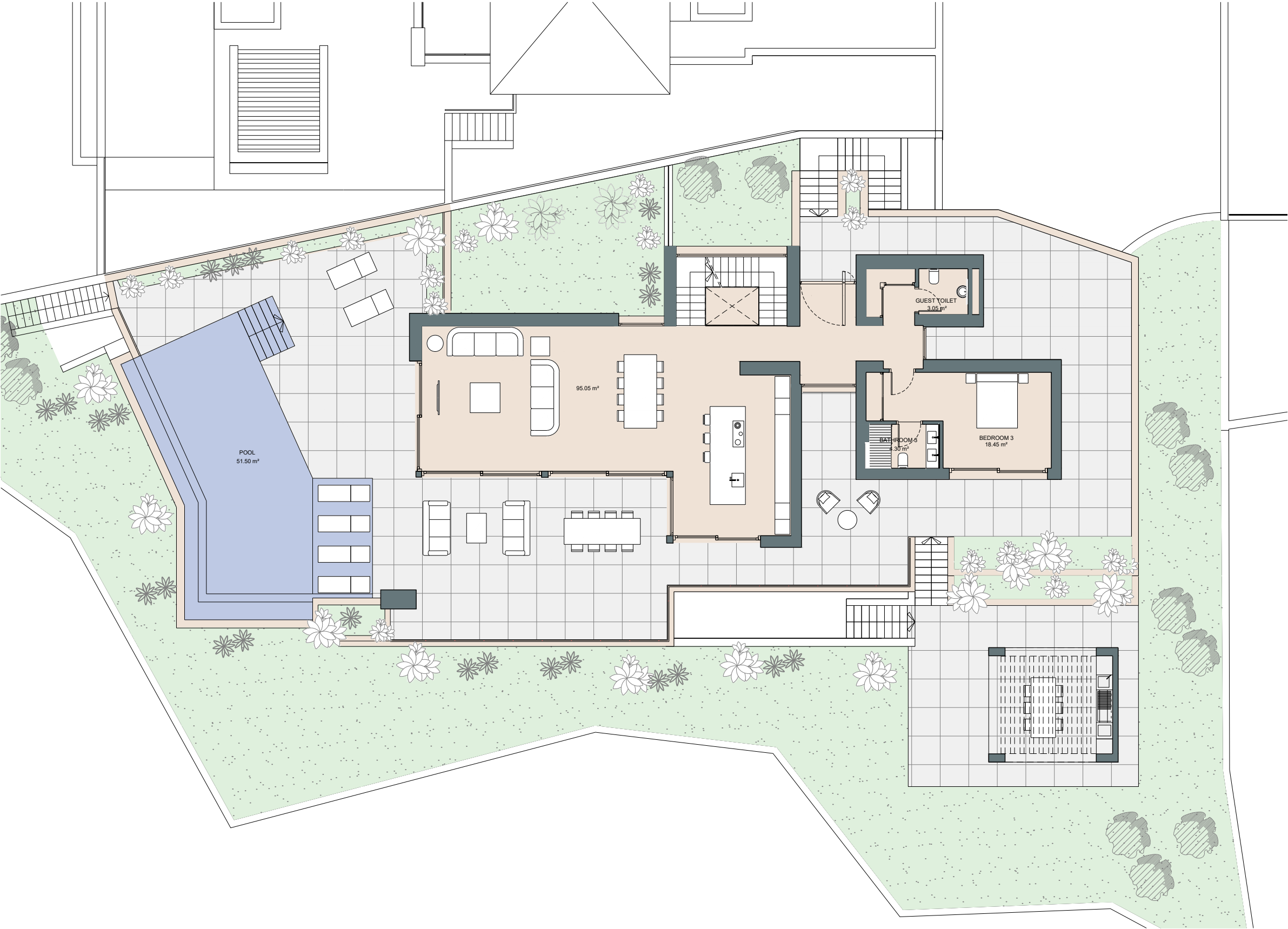

2



1m 2m 3m 4m 5m
SCALE 1:150


This document is for information only. The areas and measurements are approximate and may be modified for technical reasons and/or administrative issues. The room areas marked on the drawing are usable space.


GATE 3 | La Quinta, Marbella | Villa C | Ground floor





VILLA C. GATE 3

Built closed area	577,75 m²
Covered terrace	55,15 m²
Open terrace	352,60 m²
Open terrace pergola	20,00 m²
Total terrace	427,75 m²
Pool	51,50 m²
Total built area	1.057,00 m²


5

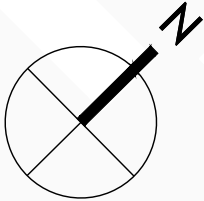

6


1.057,00 m²

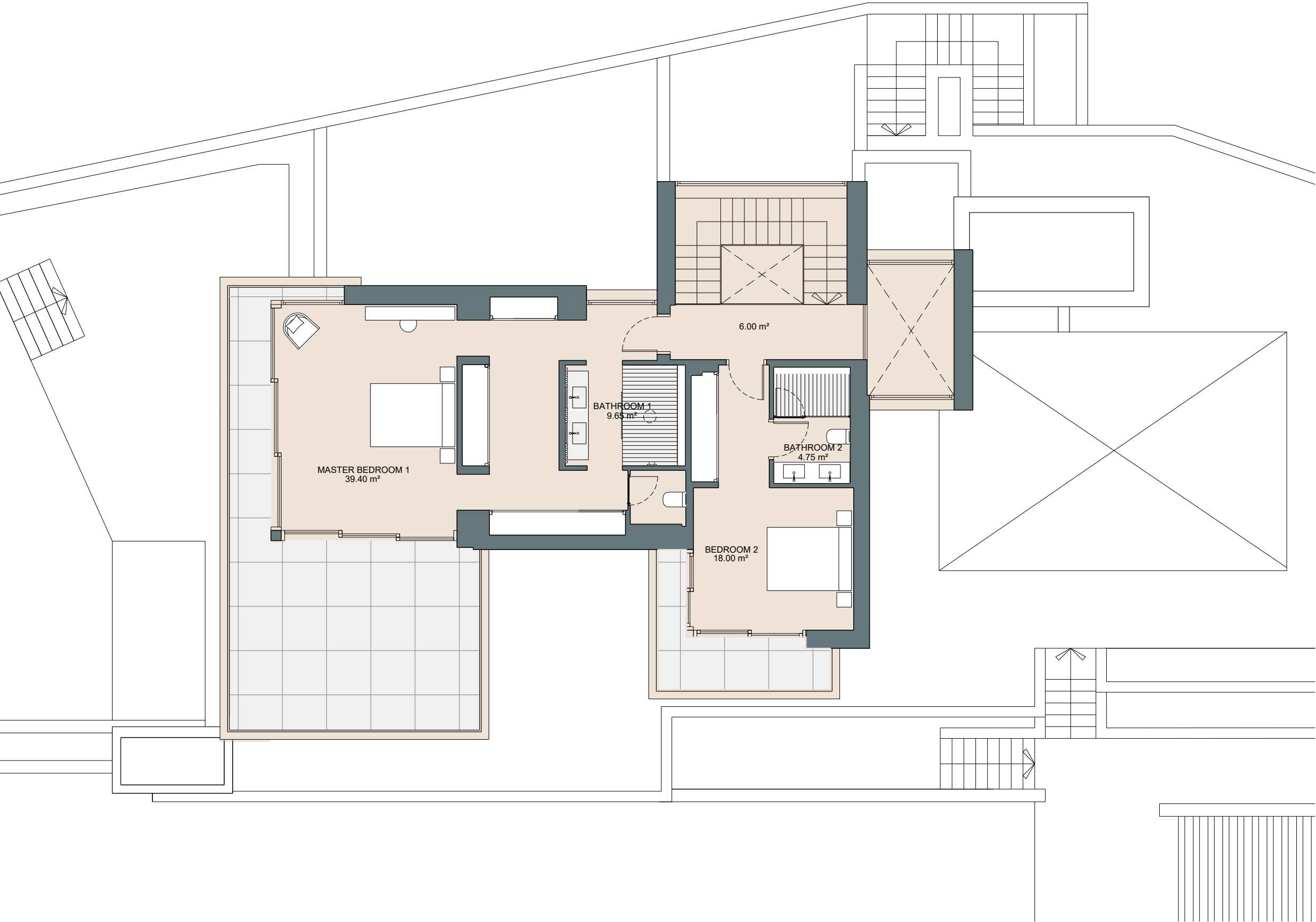

2

1m 2m 3m 4m 5m
SCALE 1:150

This document is for information only. The areas and measurements are approximate and may be modified for technical reasons and/or administrative issues. The room areas marked on the drawing are usable space.





GATE 3 | La Quinta, Marbella | Villa C | First level





VILLA C. GATE 3

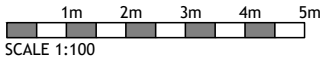
Built closed area	577,75 m²
Covered terrace	55,15 m²
Open terrace	352,60 m²
Open terrace pergola	20,00 m²
Total terrace	427,75 m²
Pool	51,50 m²
Total built area	1.057,00 m²


5


6


1.057,00 m²


2



This document is for information only. The areas and measurements are approximate and may be modified for technical reasons and/or administrative issues. The room areas marked on the drawing are usable space.

