

PINARES DE SAN ANTÓN | VILLA 9



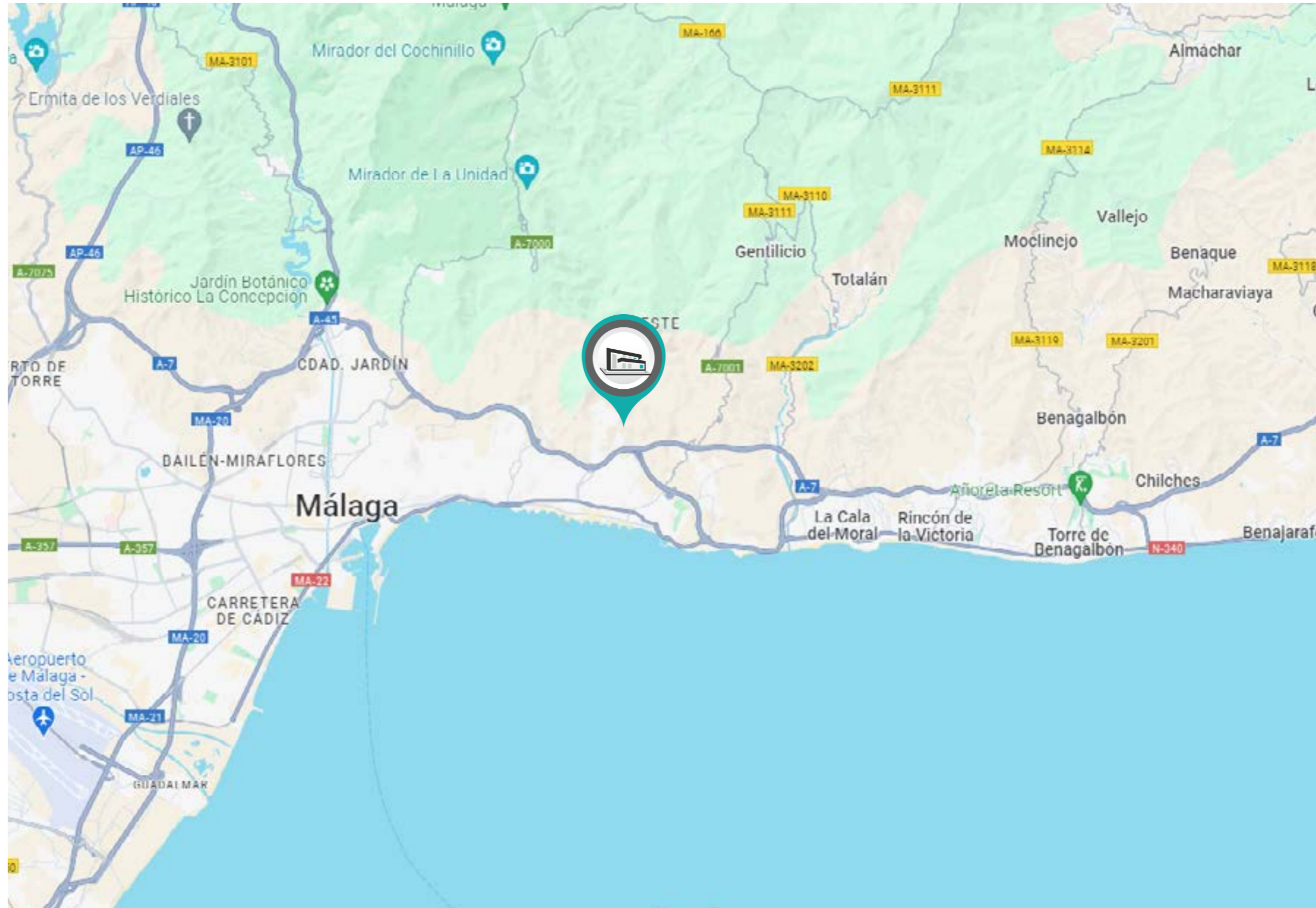
COGITARI HOMES

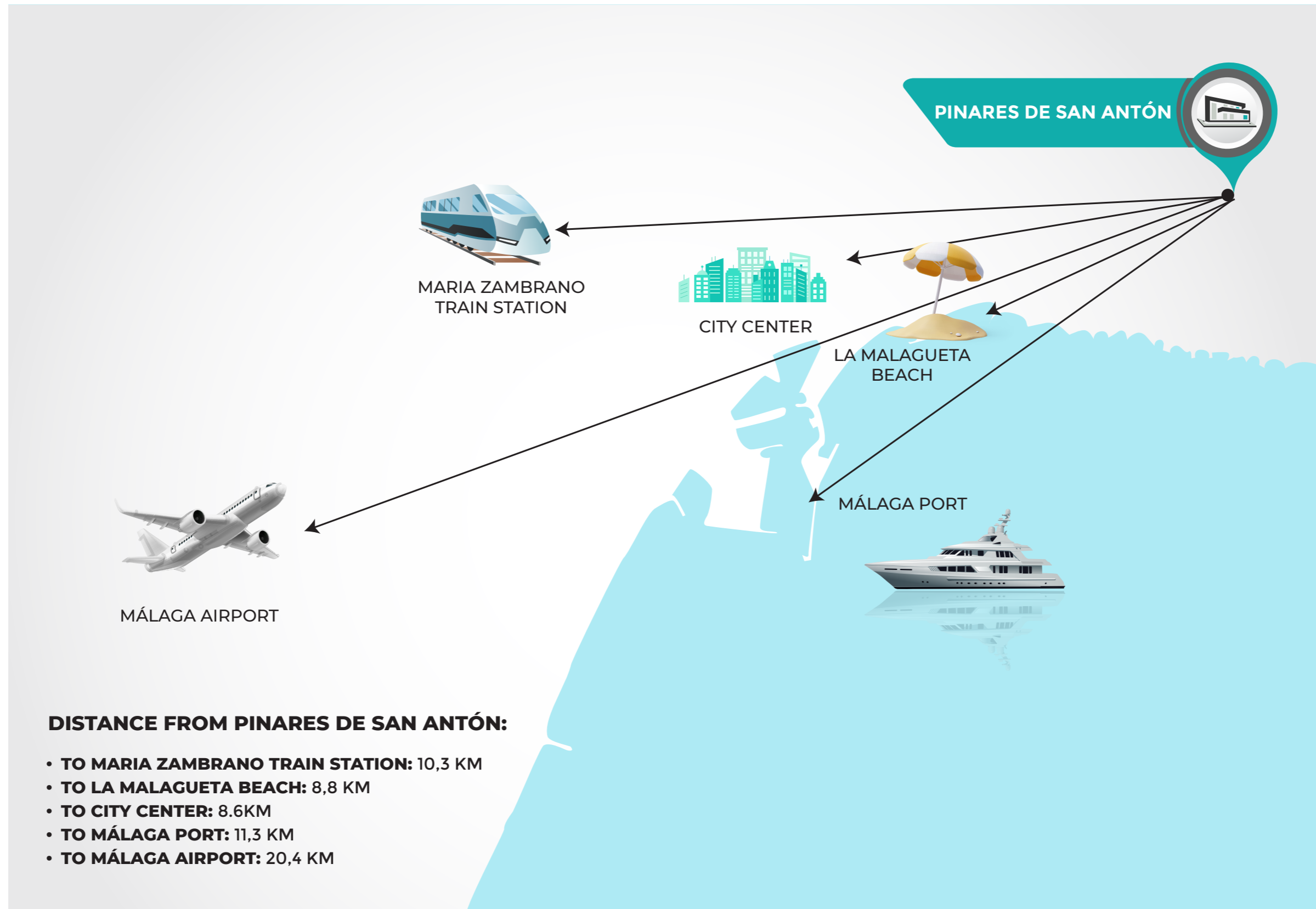


PINARES DE SAN ANTÓN | VILLA 9



COGITARI HOMES

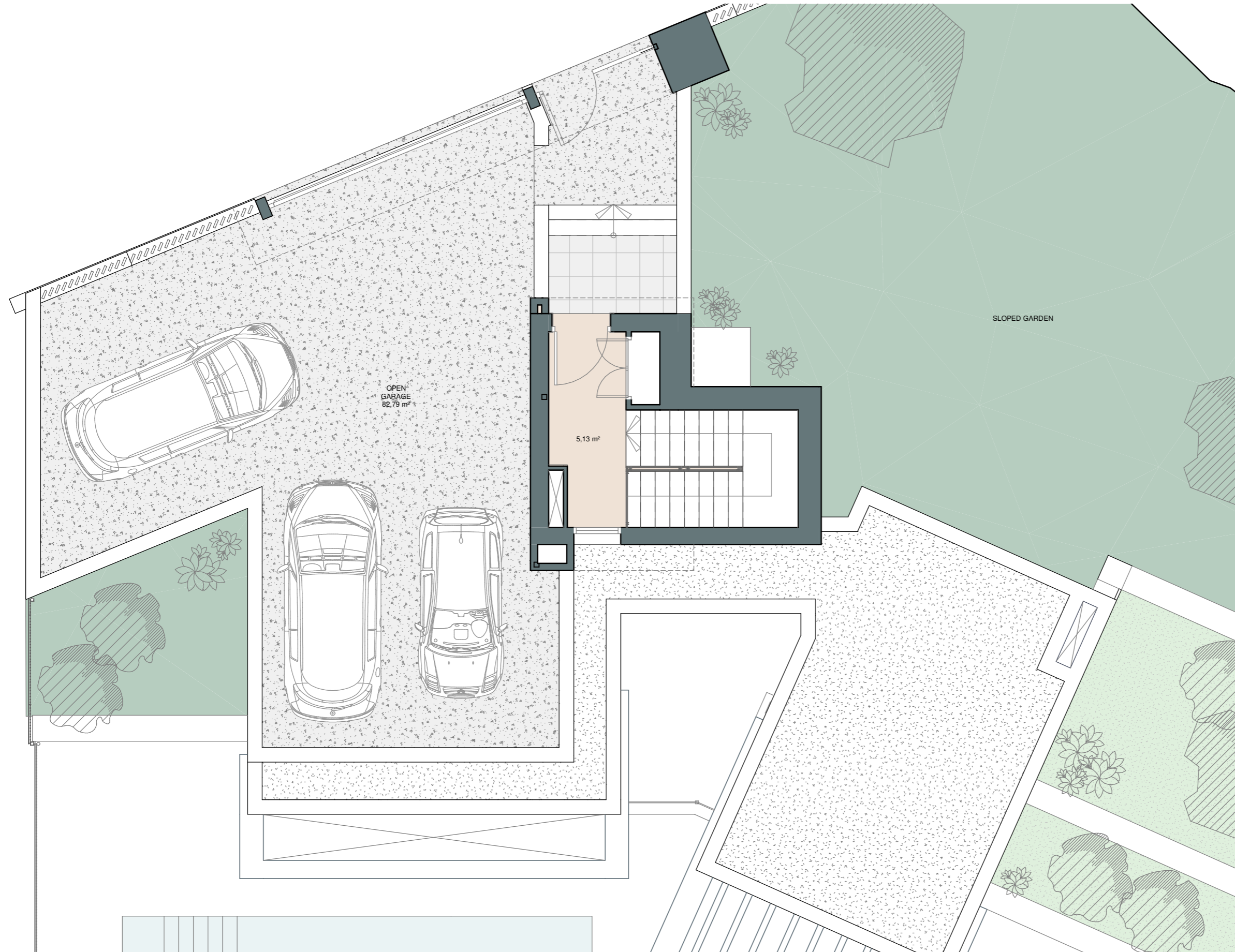




PINARES DE SAN ANTÓN | VILLA 9 | Entrance Level







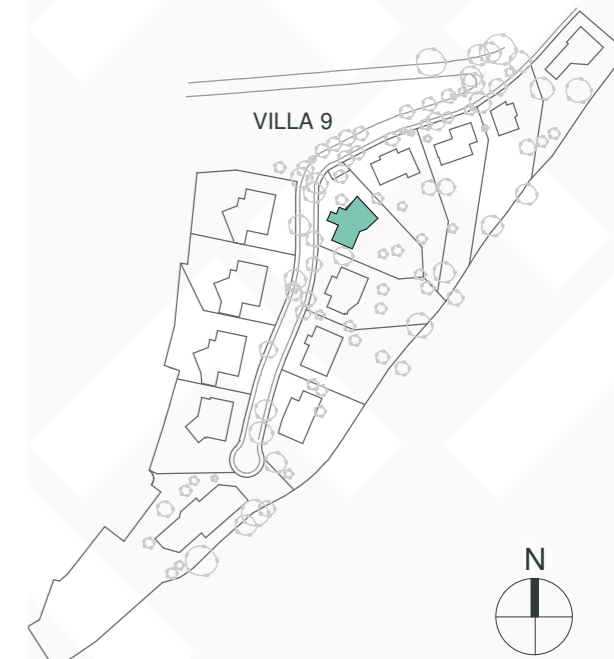
COGITARI HOMES



Villa 9

| | |
|-------------------------|--------------------------|
| Built closed area | 329 m ² |
| Covered terrace | 29 m ² |
| Open terrace | 81 m ² |
| Open terrace pergola | 11 m ² |
| Total terrace | 121 m² |
| Pool 9 x 3,8m | 34 m ² |
| Total built area | 484 m² |
| Plot area | 915 m² |

 4
  3
  329 m²
  3

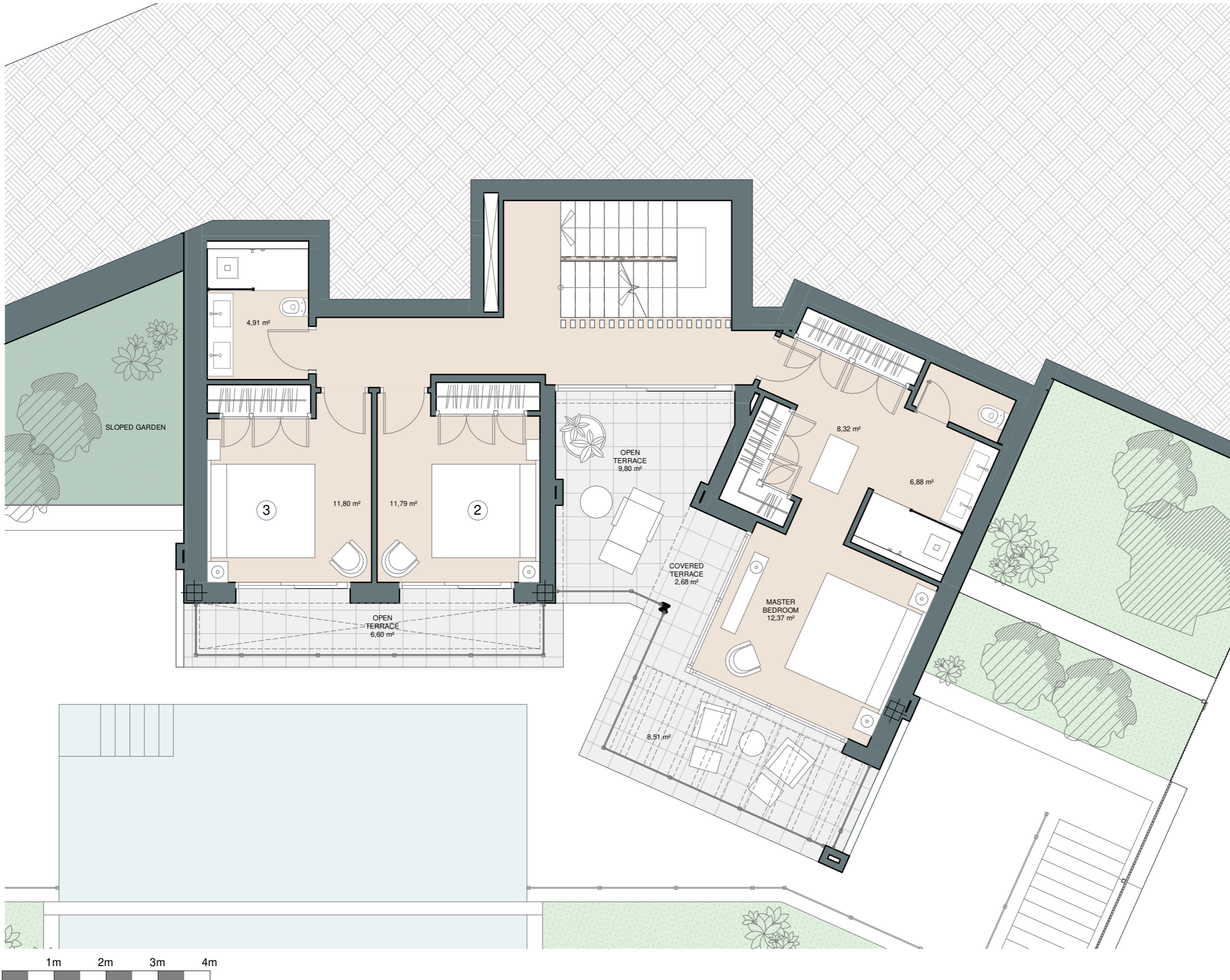


This document is for information only. The areas and measurements are approximate and may be modified for technical reasons and/or administrative issues. The room areas marked on the drawing are usable space.

PINARES DE SAN ANTÓN | VILLA 9 | Level +1







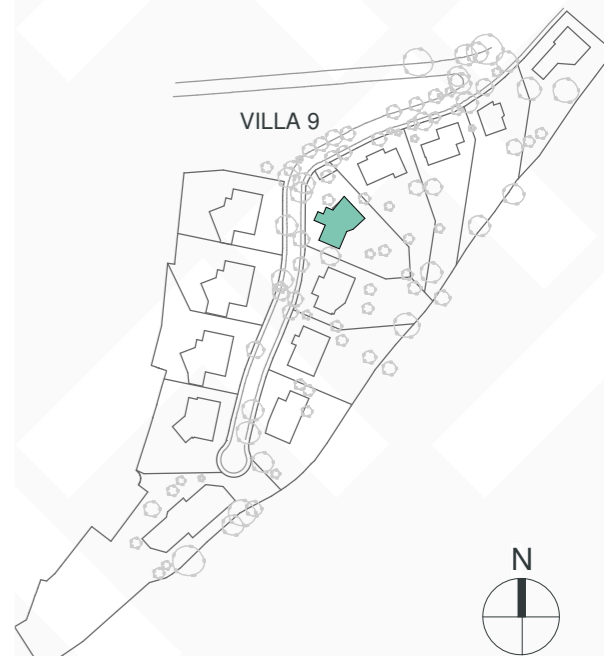
COGITARI HOMES



Villa 9

| | |
|-------------------------|--------------------------|
| Built closed area | 329 m ² |
| Covered terrace | 29 m ² |
| Open terrace | 81 m ² |
| Open terrace pergola | 11 m ² |
| Total terrace | 121 m² |
| Pool 9 x 3,8m | 34 m ² |
| Total built area | 484 m² |
| Plot area | 915 m² |

 4
  3
  329 m²
  3

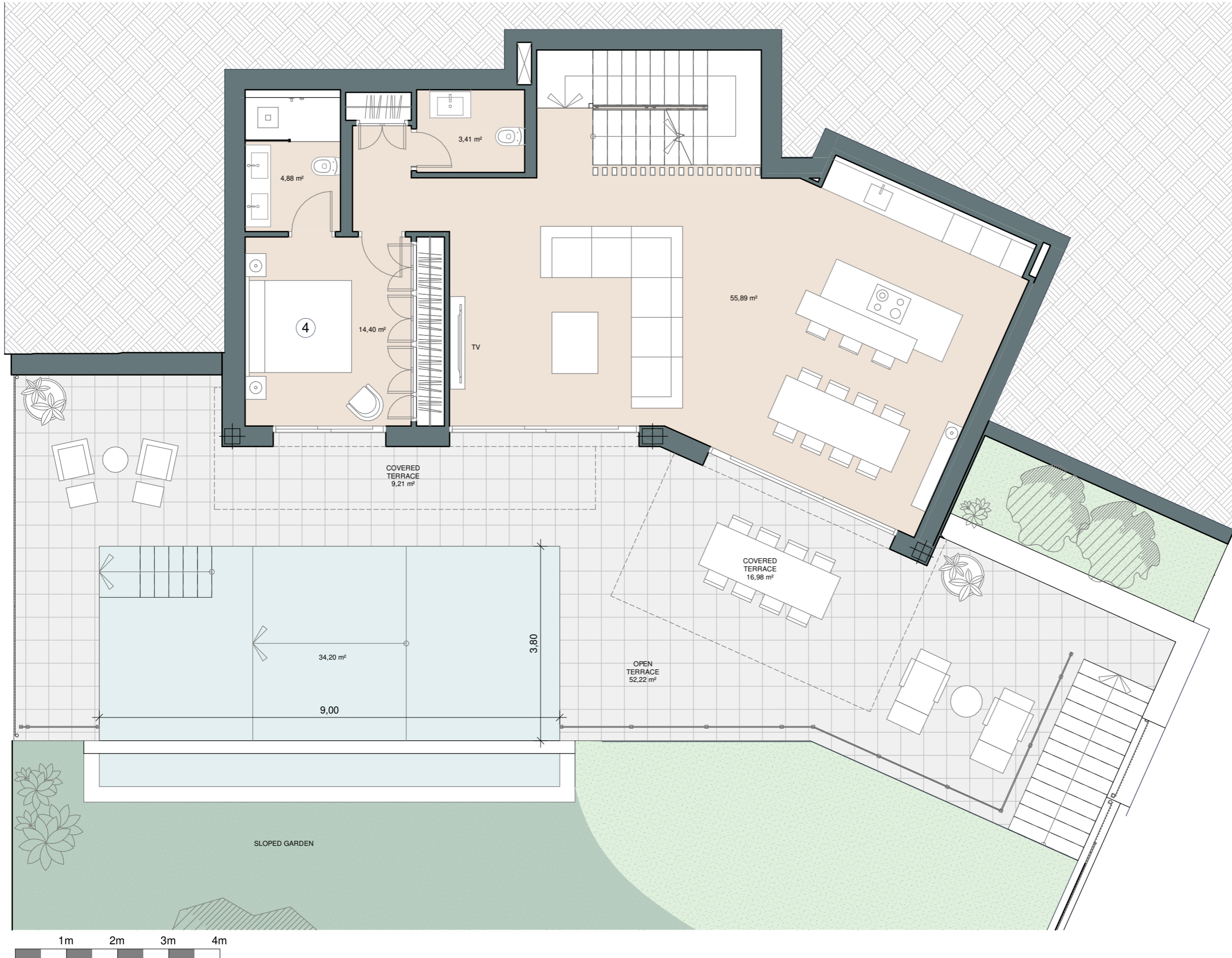


This document is for information only. The areas and measurements are approximate and may be modified for technical reasons and/or administrative issues. The room areas marked on the drawing are usable space.

PINARES DE SAN ANTÓN | VILLA 9 | Ground Floor







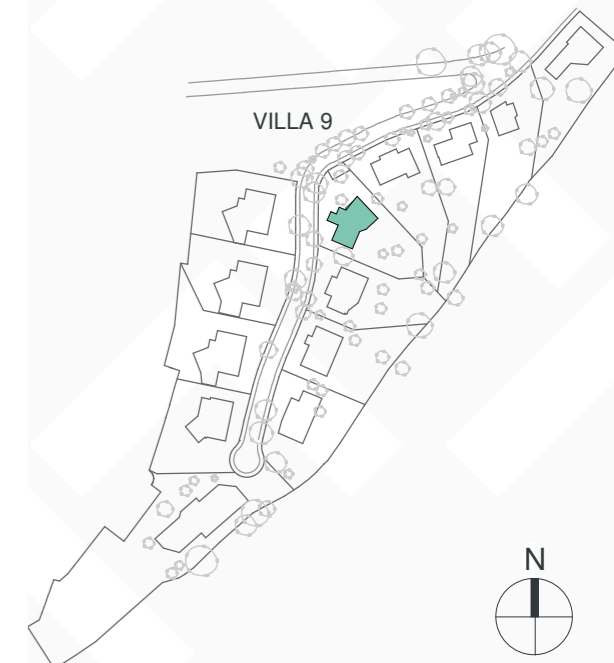
COGITARI HOMES



Villa 9

| | |
|-------------------------|--------------------------|
| Built closed area | 329 m ² |
| Covered terrace | 29 m ² |
| Open terrace | 81 m ² |
| Open terrace pergola | 11 m ² |
| Total terrace | 121 m² |
| Pool 9 x 3,8m | 34 m ² |
| Total built area | 484 m² |
| Plot area | 915 m² |

 4
  3
  329 m²
 3

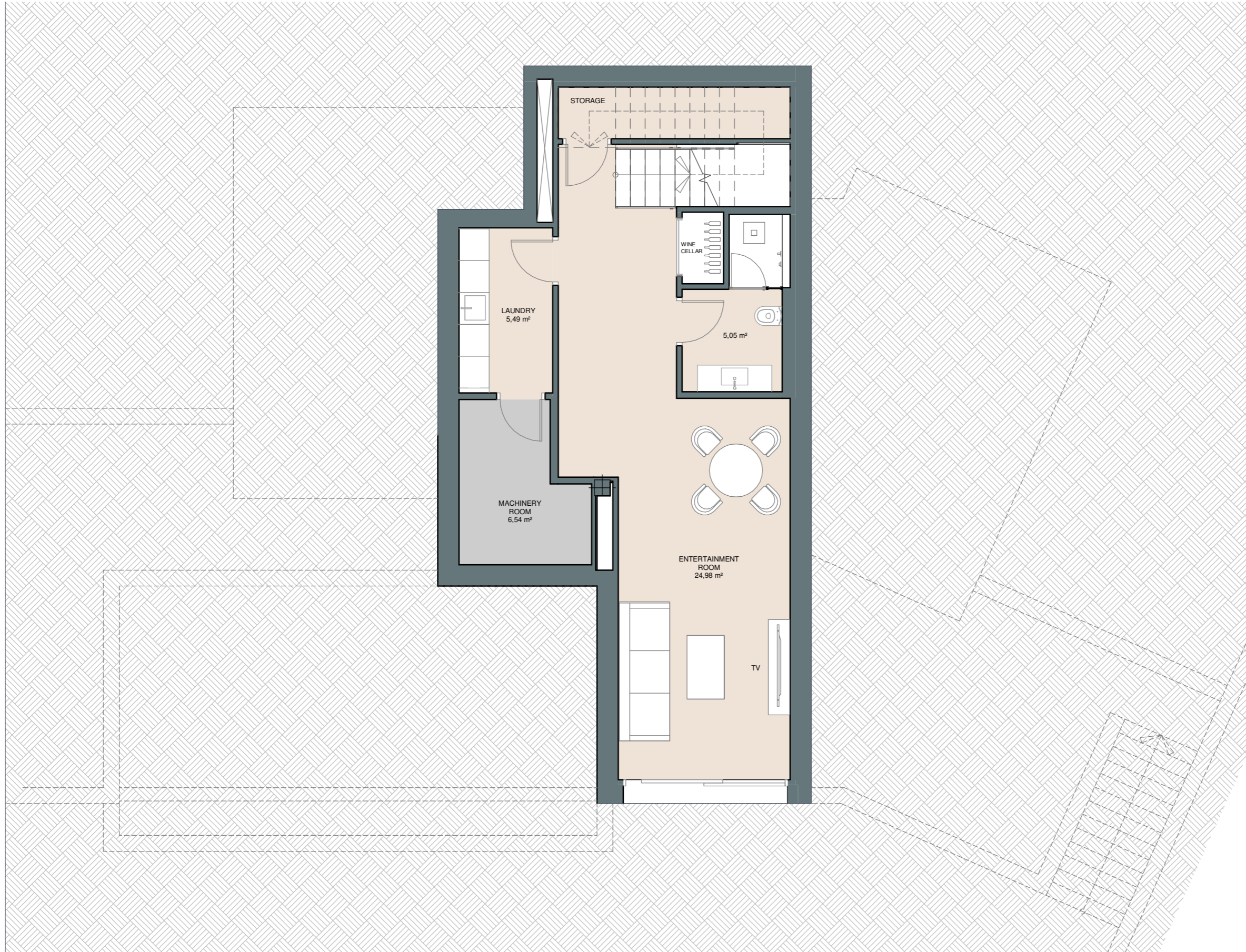


This document is for information only. The areas and measurements are approximate and may be modified for technical reasons and/or administrative issues. The room areas marked on the drawing are usable space.

PINARES DE SAN ANTÓN | VILLA 9 | Entertainment level



COGITARI HOMES



Villa 9

| | |
|-------------------------|--------------------------|
| Built closed area | 329 m ² |
| Covered terrace | 29 m ² |
| Open terrace | 81 m ² |
| Open terrace pergola | 11 m ² |
| Total terrace | 121 m² |
| Pool 9 x 3,8m | 34 m ² |
| Total built area | 484 m² |
| Plot area | 915 m² |

4 3 329 m² 3



This document is for information only. The areas and measurements are approximate and may be modified for technical reasons and/or administrative issues. The room areas marked on the drawing are usable space.



PINARES DE SAN ANTÓN | VILLA 9



COGITARI HOMES







PINARES DE SAN ANTÓN | VILLA 9



COGITARI HOMES



PINARES DE SAN ANTÓN | VILLA 9



COGITARI HOMES

