

PINARES DE SAN ANTÓN | VILLA 8



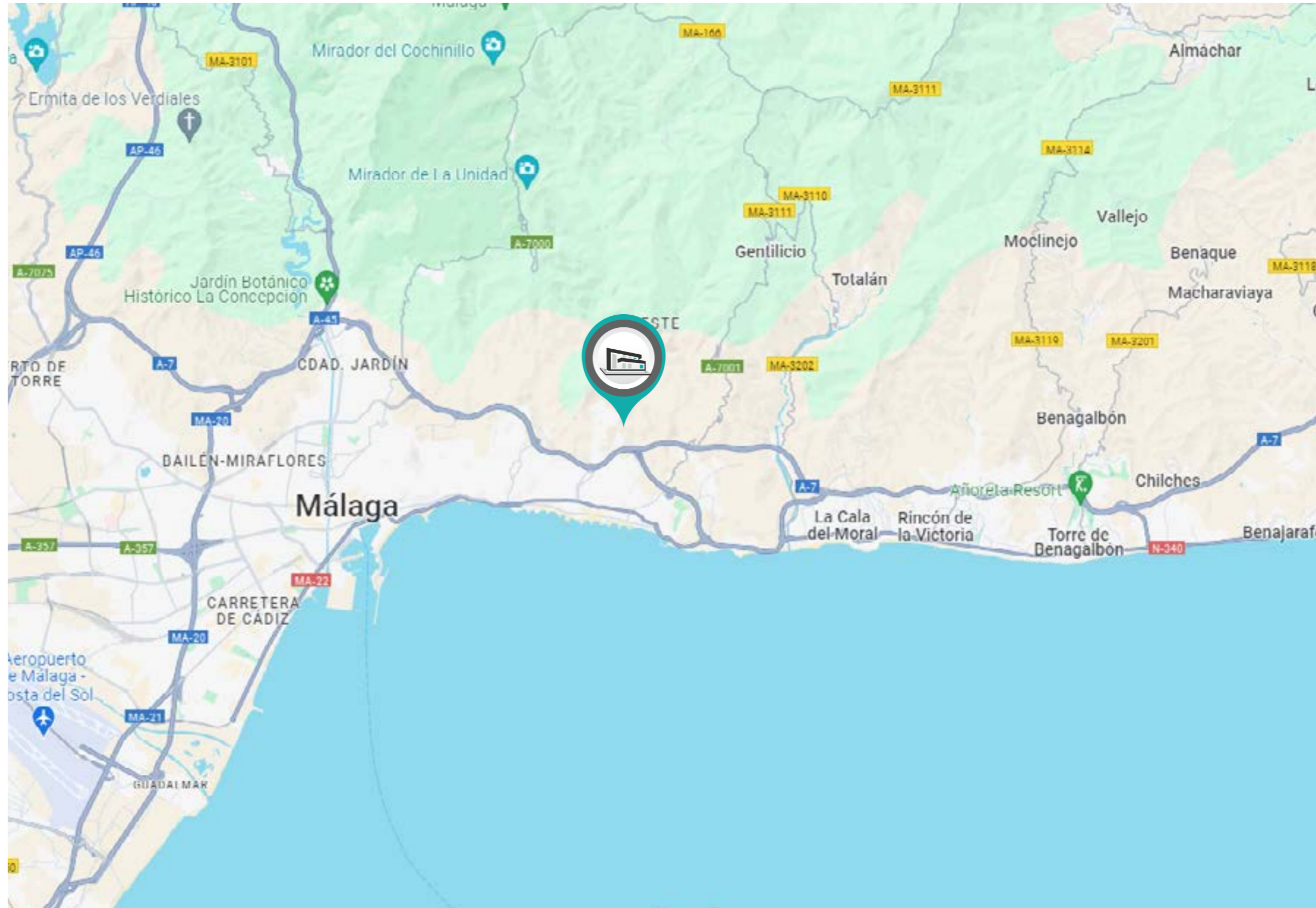
COGITARI HOMES

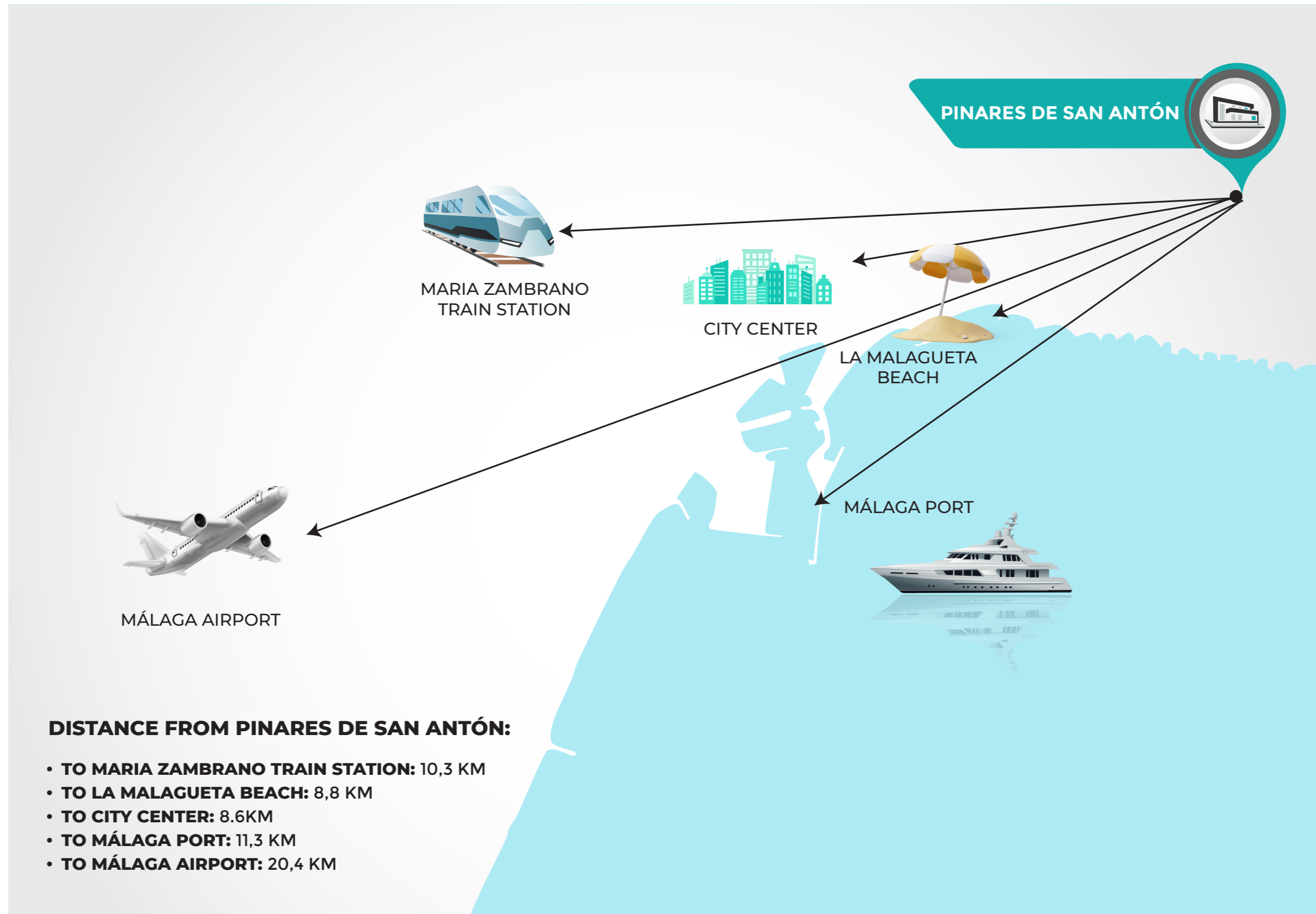


PINARES DE SAN ANTÓN | VILLA 8



COGITARI HOMES

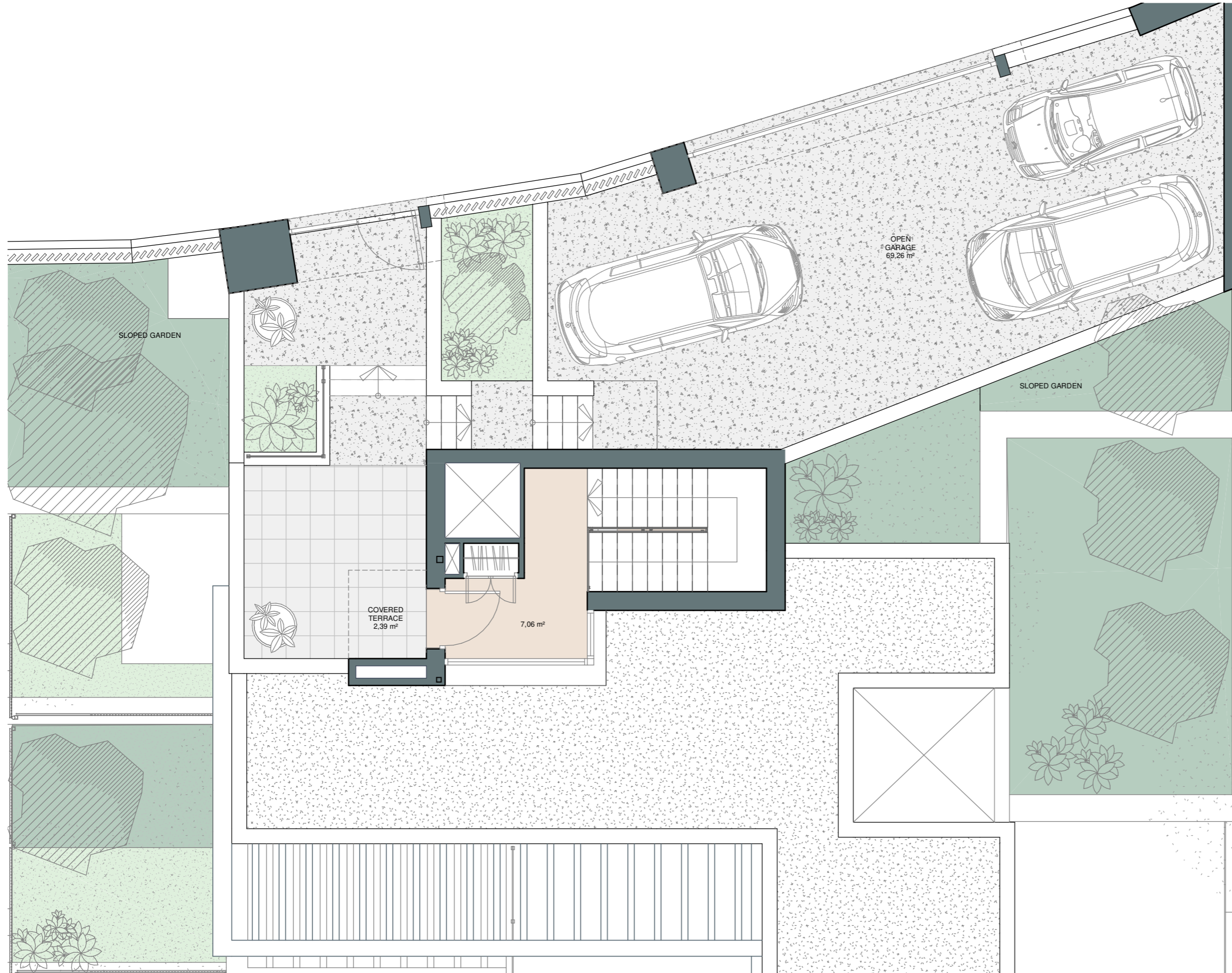




PINARES DE SAN ANTÓN | VILLA 8 | Entrance Level







COGITARI HOMES



Villa 8

Built closed area	357 m ²
Covered terrace	27 m ²
Open terrace	72 m ²
Open terrace pergola	24 m ²
Total terrace	123 m²
Pool 9 x 3,8m	34 m ²
Total built area	514 m²
Plot area	915 m²

 5
  4
  357 m²
 3

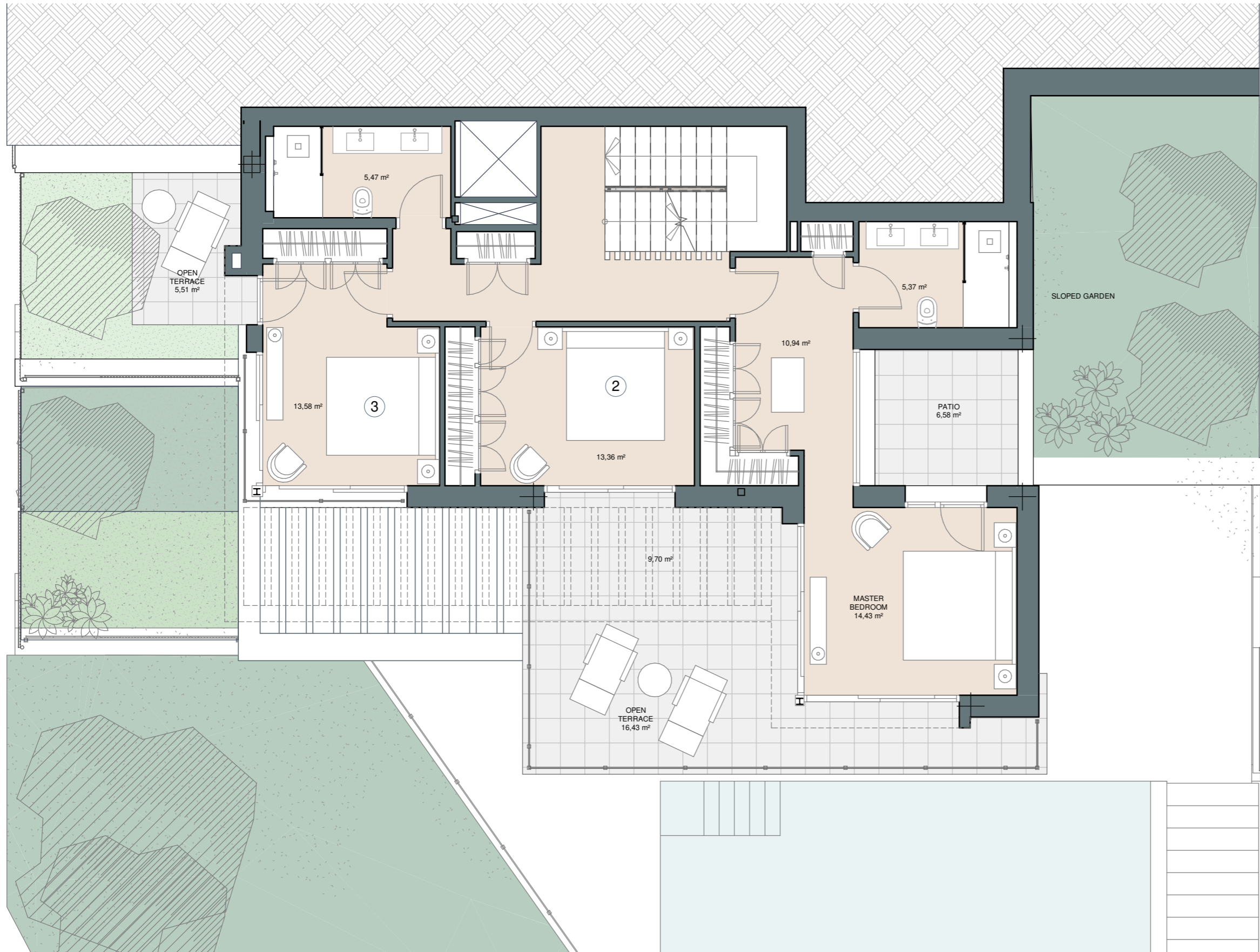


This document is for information only. The areas and measurements are approximate and may be modified for technical reasons and/or administrative issues. The room areas marked on the drawing are usable space.

PINARES DE SAN ANTÓN | VILLA 8 | Level +1







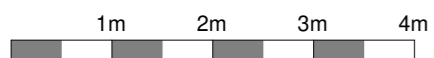
COGITARI HOMES



Villa 8

Built closed area	357 m ²
Covered terrace	27 m ²
Open terrace	72 m ²
Open terrace pergola	24 m ²
Total terrace	123 m²
Pool 9 x 3,8m	34 m ²
Total built area	514 m²
Plot area	915 m²

 5
  4
  357 m²
  3



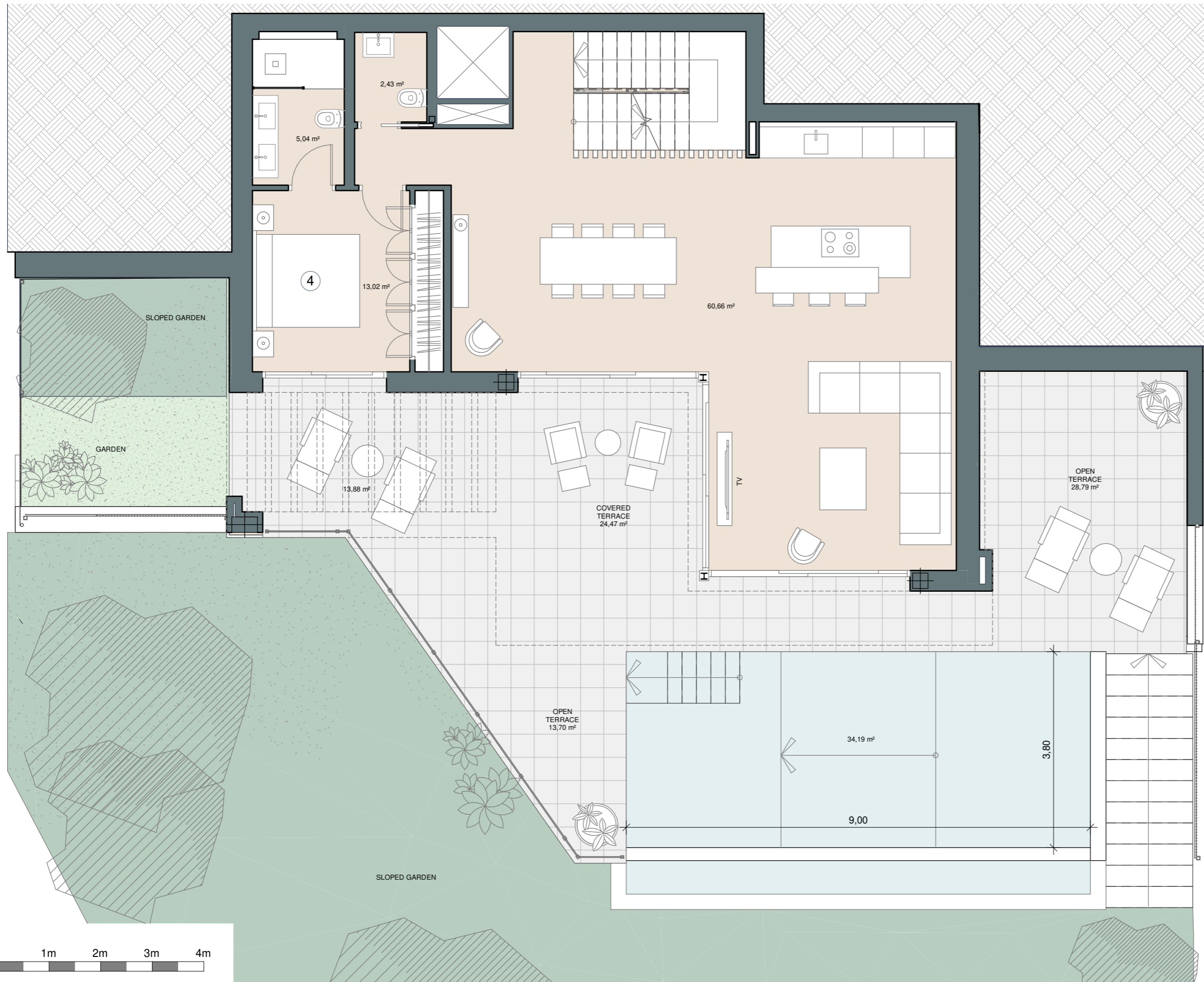
This document is for information only. The areas and measurements are approximate and may be modified for technical reasons and/or administrative issues. The room areas marked on the drawing are usable space.



PINARES DE SAN ANTÓN | VILLA 8 | Ground Floor



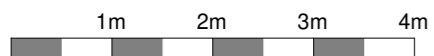
COGITARI HOMES



Villa 8

Built closed area	357 m ²
Covered terrace	27 m ²
Open terrace	72 m ²
Open terrace pergola	24 m ²
Total terrace	123 m²
Pool 9 x 3,8m	34 m ²
Total built area	514 m²
Plot area	915 m²

5
 4
 357 m²
 3



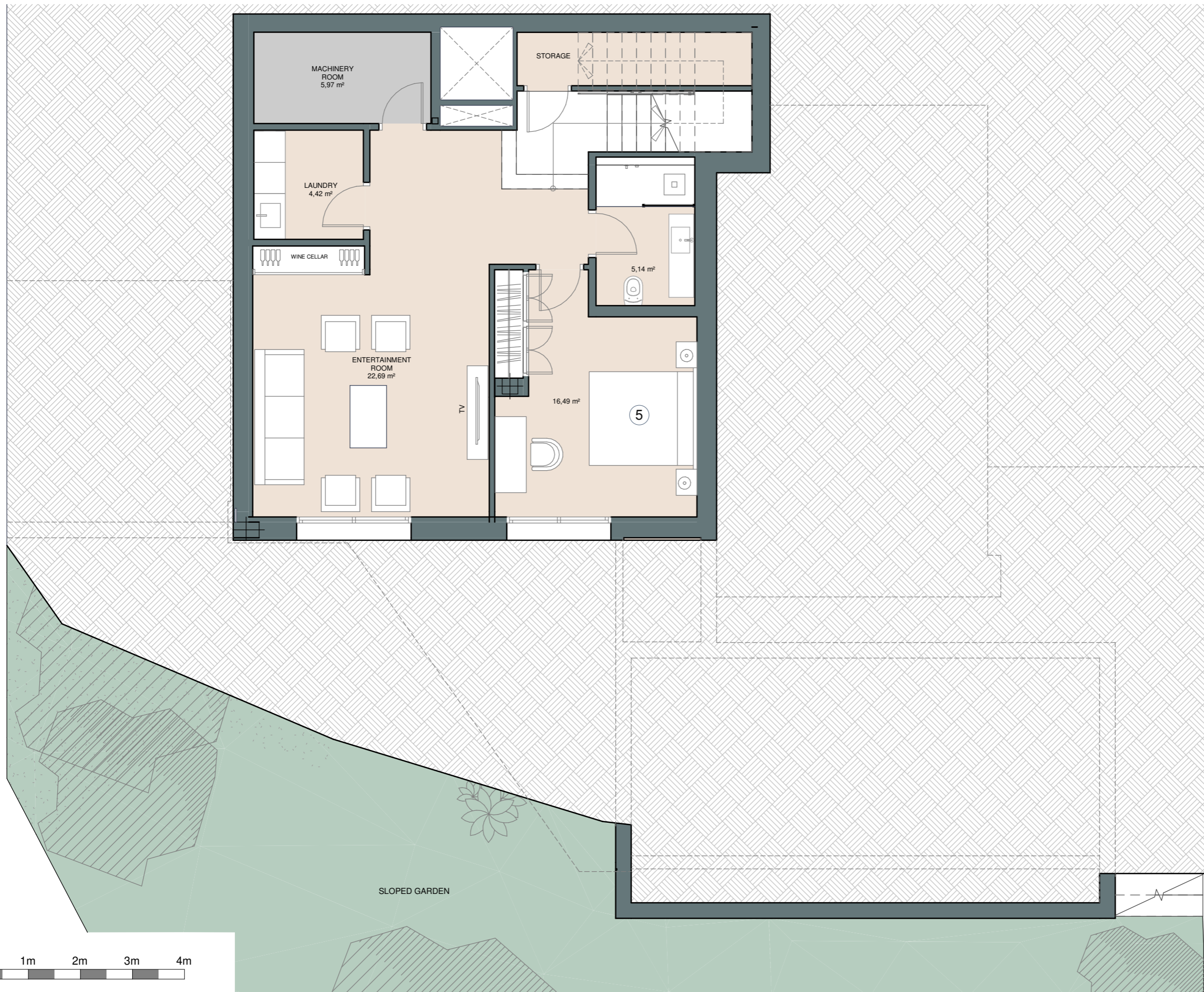
This document is for information only. The areas and measurements are approximate and may be modified for technical reasons and/or administrative issues. The room areas marked on the drawing are usable space.



PINARES DE SAN ANTÓN | VILLA 8 | Entertainment level

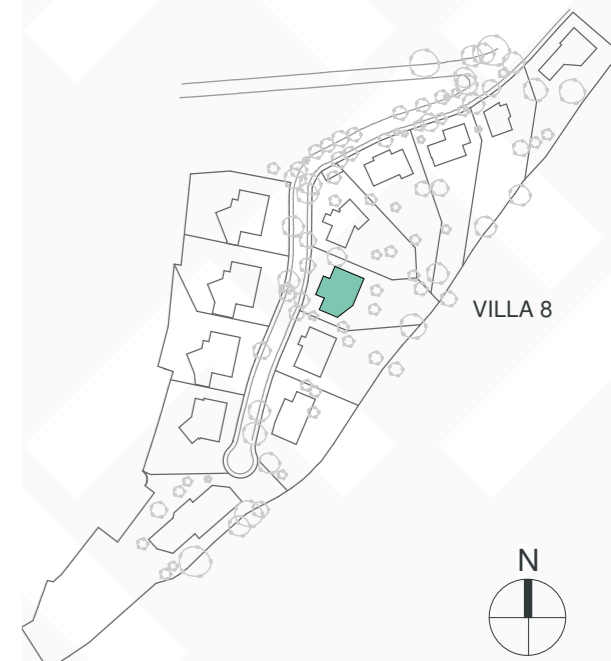
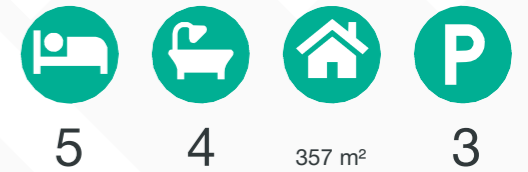


COGITARI HOMES



Villa 8

Built closed area	357 m ²
Covered terrace	27 m ²
Open terrace	72 m ²
Open terrace pergola	24 m ²
Total terrace	123 m²
Pool 9 x 3,8m	34 m ²
Total built area	514 m²
Plot area	915 m²



This document is for information only. The areas and measurements are approximate and may be modified for technical reasons and/or administrative issues. The room areas marked on the drawing are usable space.

PINARES DE SAN ANTÓN | VILLA 8



COGITARI HOMES



PINARES DE SAN ANTÓN | VILLA 8



COGITARI HOMES



PINARES DE SAN ANTÓN | VILLA 8



COGITARI HOMES





PINARES DE SAN ANTÓN | VILLA 8



COGITARI HOMES

