

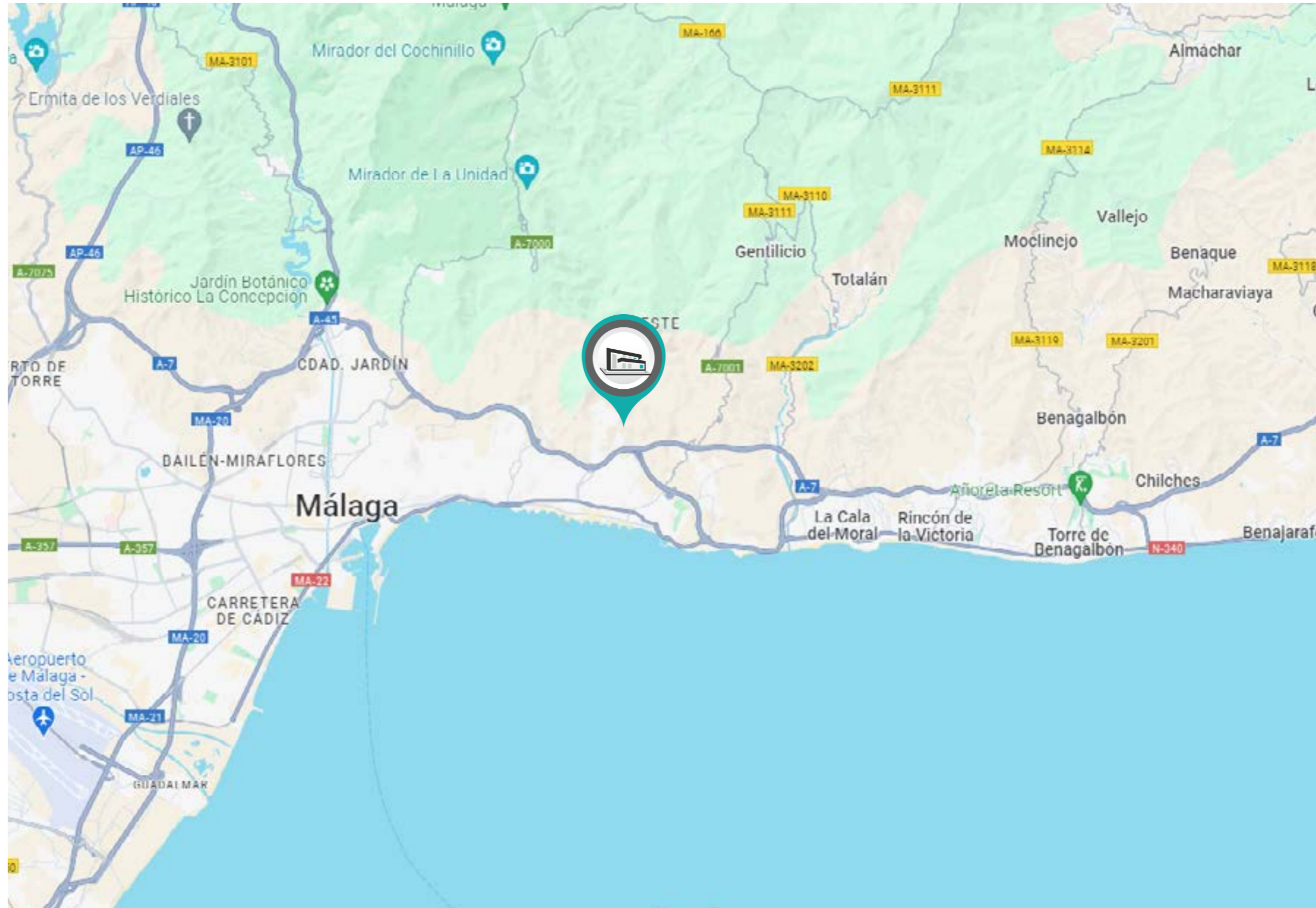
PINARES DE SAN ANTÓN | VILLA 6

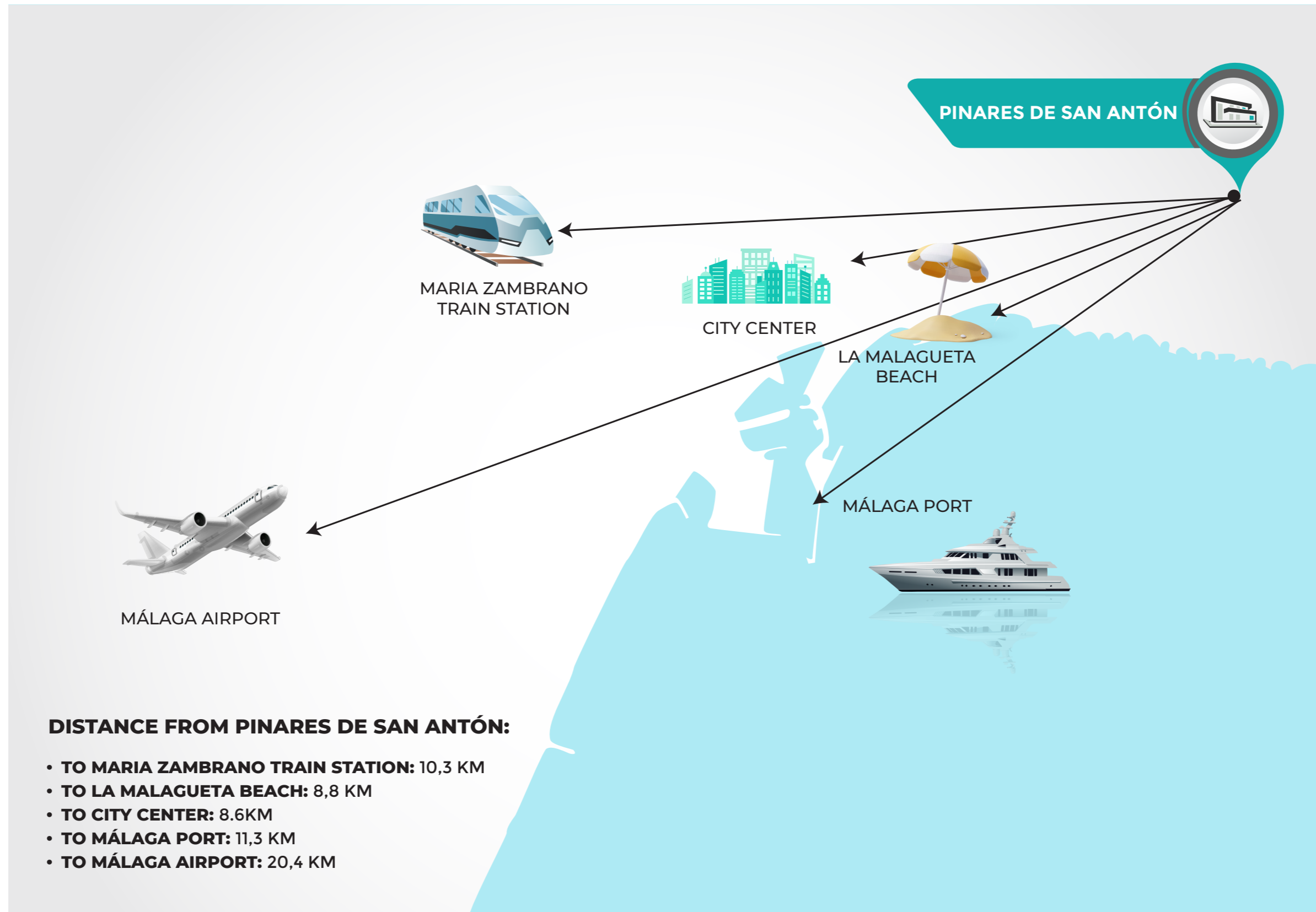


PINARES DE SAN ANTÓN | VILLA 6



COGITARI HOMES

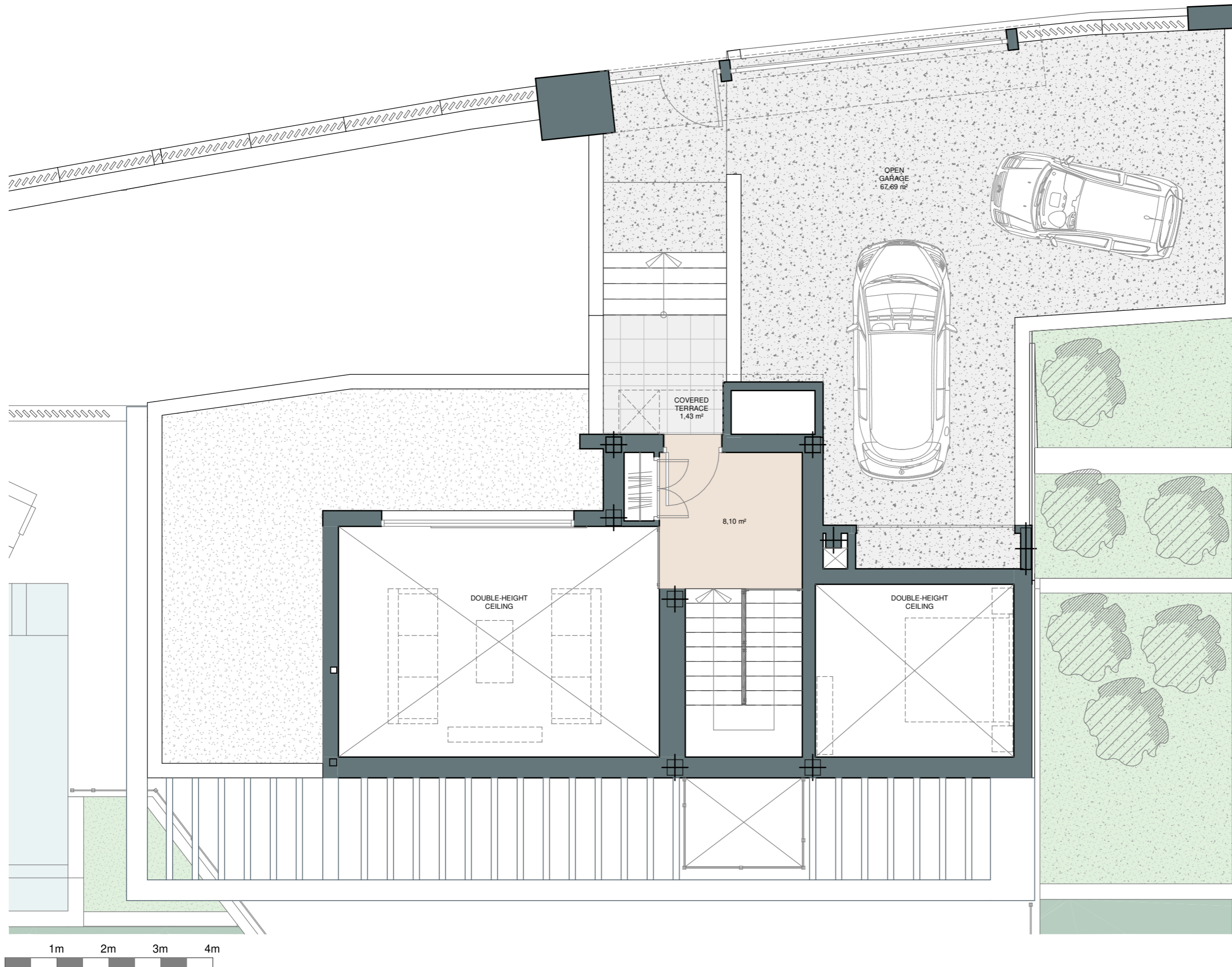




PINARES DE SAN ANTÓN | VILLA 6 | Entrance Floor







COGITARI HOMES



Villa 6

Built closed area	391 m ²
Covered terrace	33 m ²
Open terrace	74 m ²
Open terrace pergola	35 m ²
Total terrace	142 m²
Pool 9 x 5,40m	55 m ²
Total built area	588 m²
Plot area	915 m²

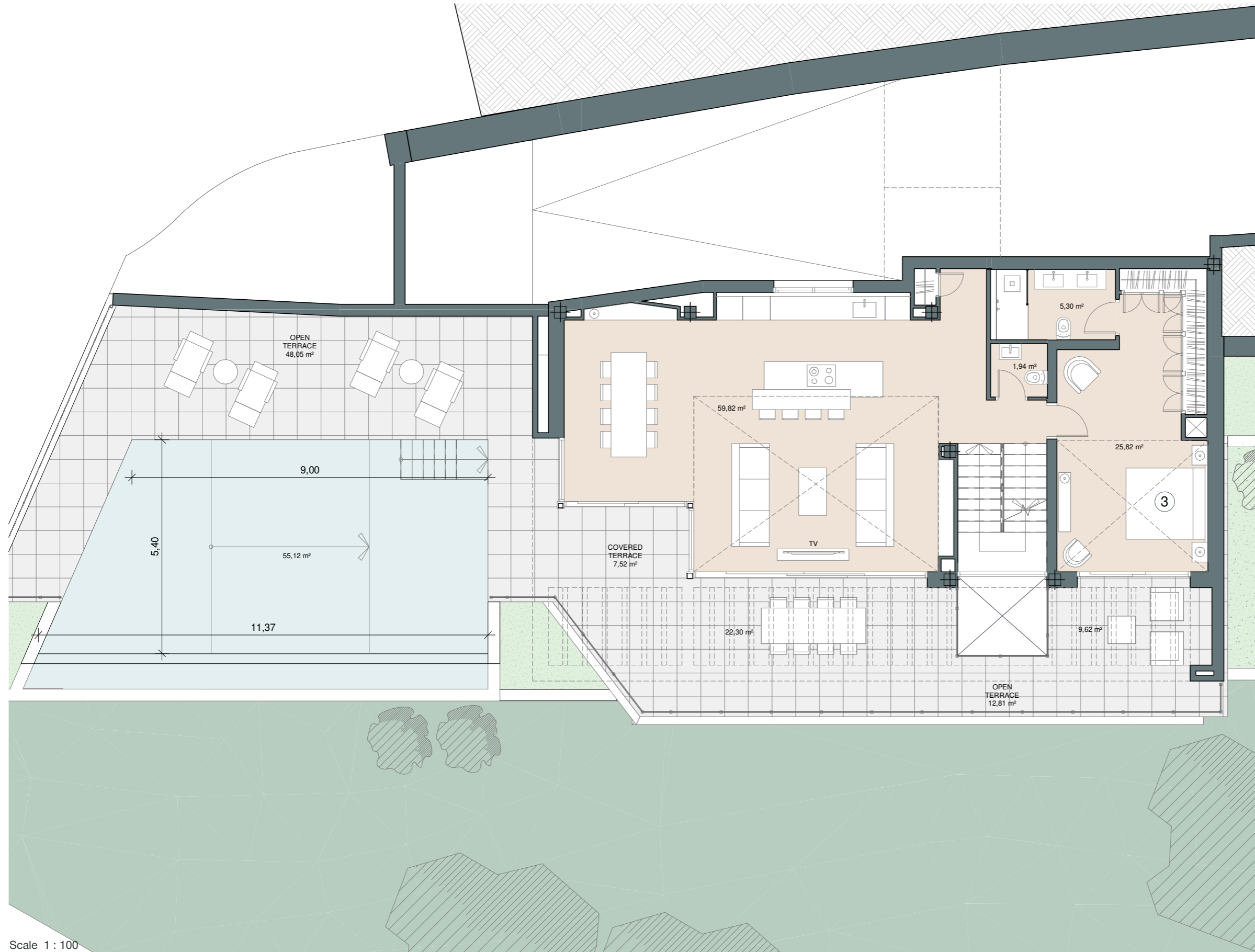
 5
  4
  391 m²
 2



PINARES DE SAN ANTÓN | VILLA 6 | Level +1







COGITARI HOMES

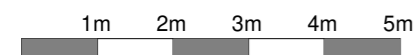


Villa 6

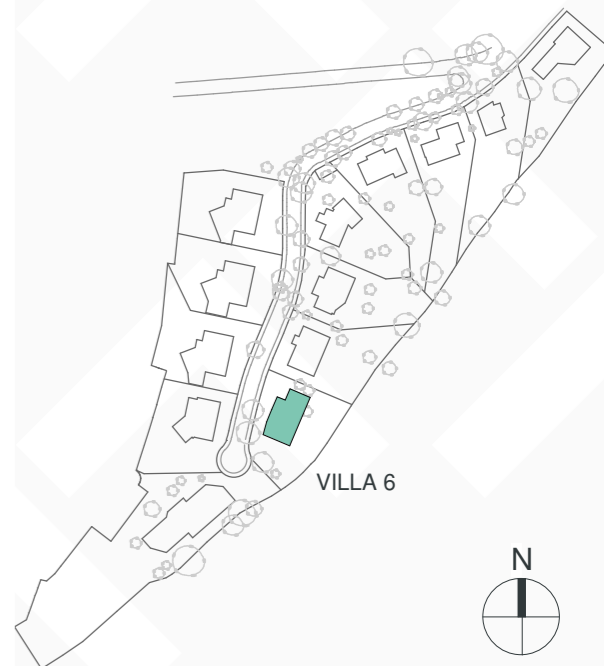
Built closed area	391 m ²
Covered terrace	33 m ²
Open terrace	74 m ²
Open terrace pergola	35 m ²
Total terrace	142 m²
Pool 9 x 5,40m	55 m ²
Total built area	588 m²
Plot area	915 m²

 5
  4
  391 m²
  2

Scale 1 : 100



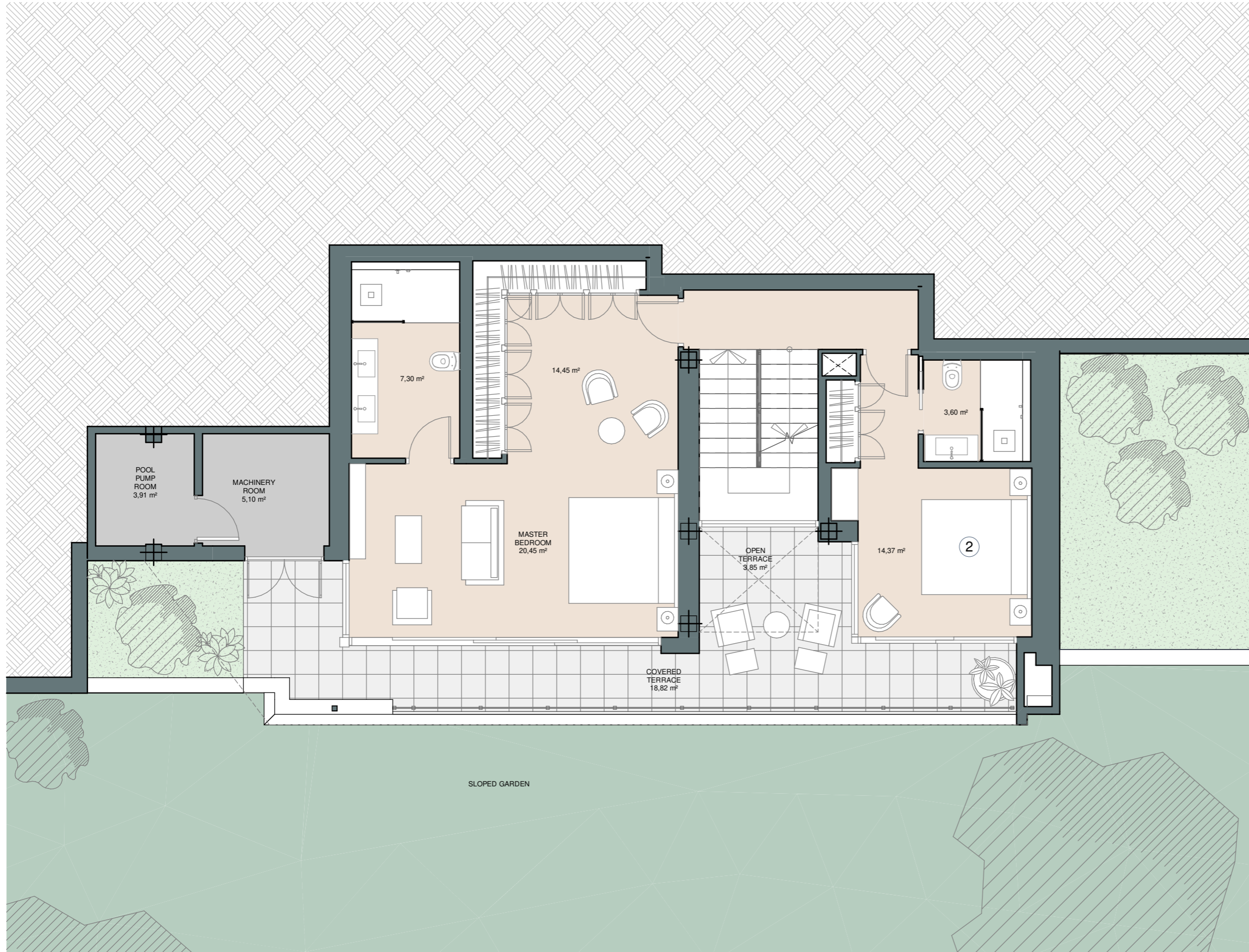
This document is for information only. The areas and measurements are approximate and may be modified for technical reasons and/or administrative issues. The room areas marked on the drawing are usable space.



PINARES DE SAN ANTÓN | VILLA 6 | Ground Floor







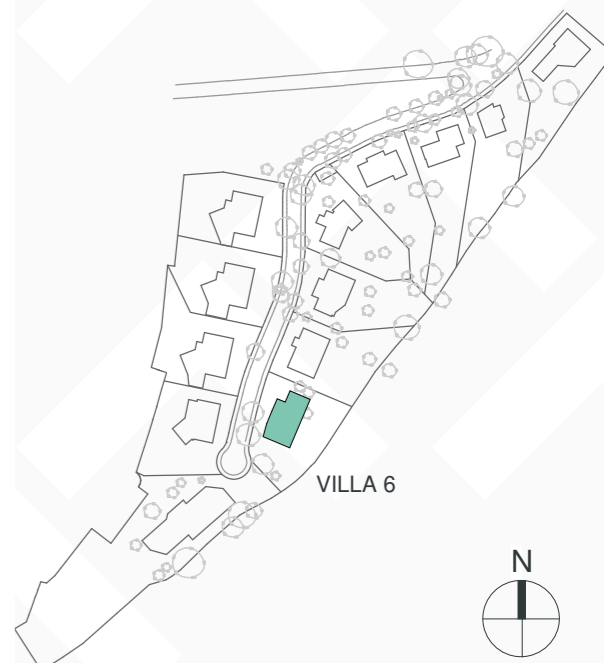
COGITARI HOMES



Villa 6

Built closed area	391 m ²
Covered terrace	33 m ²
Open terrace	74 m ²
Open terrace pergola	35 m ²
Total terrace	142 m²
Pool 9 x 5,40m	55 m ²
Total built area	588 m²
Plot area	915 m²

 5
  4
  391 m²
 2

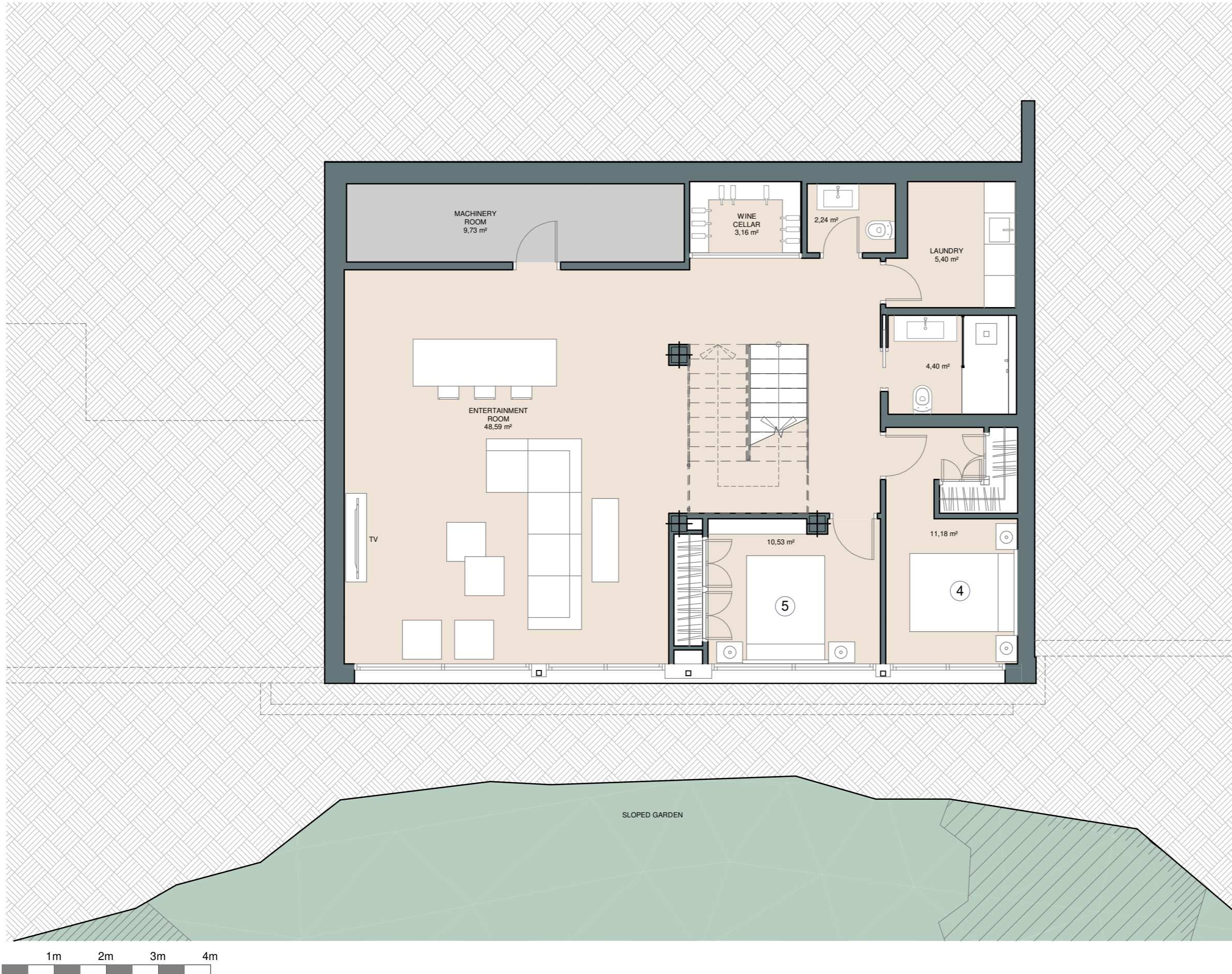


This document is for information only. The areas and measurements are approximate and may be modified for technical reasons and/or administrative issues. The room areas marked on the drawing are usable space.

PINARES DE SAN ANTÓN | VILLA 6 | Entertainment level



COGITARI HOMES



Villa 6

Built closed area	391 m ²
Covered terrace	33 m ²
Open terrace	74 m ²
Open terrace pergola	35 m ²
Total terrace	142 m²
Pool 9 x 5,40m	55 m ²
Total built area	588 m²
Plot area	915 m²

5 4 391 m² 2



This document is for information only. The areas and measurements are approximate and may be modified for technical reasons and/or administrative issues. The room areas marked on the drawing are usable space.

PINARES DE SAN ANTÓN | VILLA 6



COGITARI HOMES



PINARES DE SAN ANTÓN | VILLA 6



COGITARI HOMES



