

PINARES DE SAN ANTÓN | VILLA 5



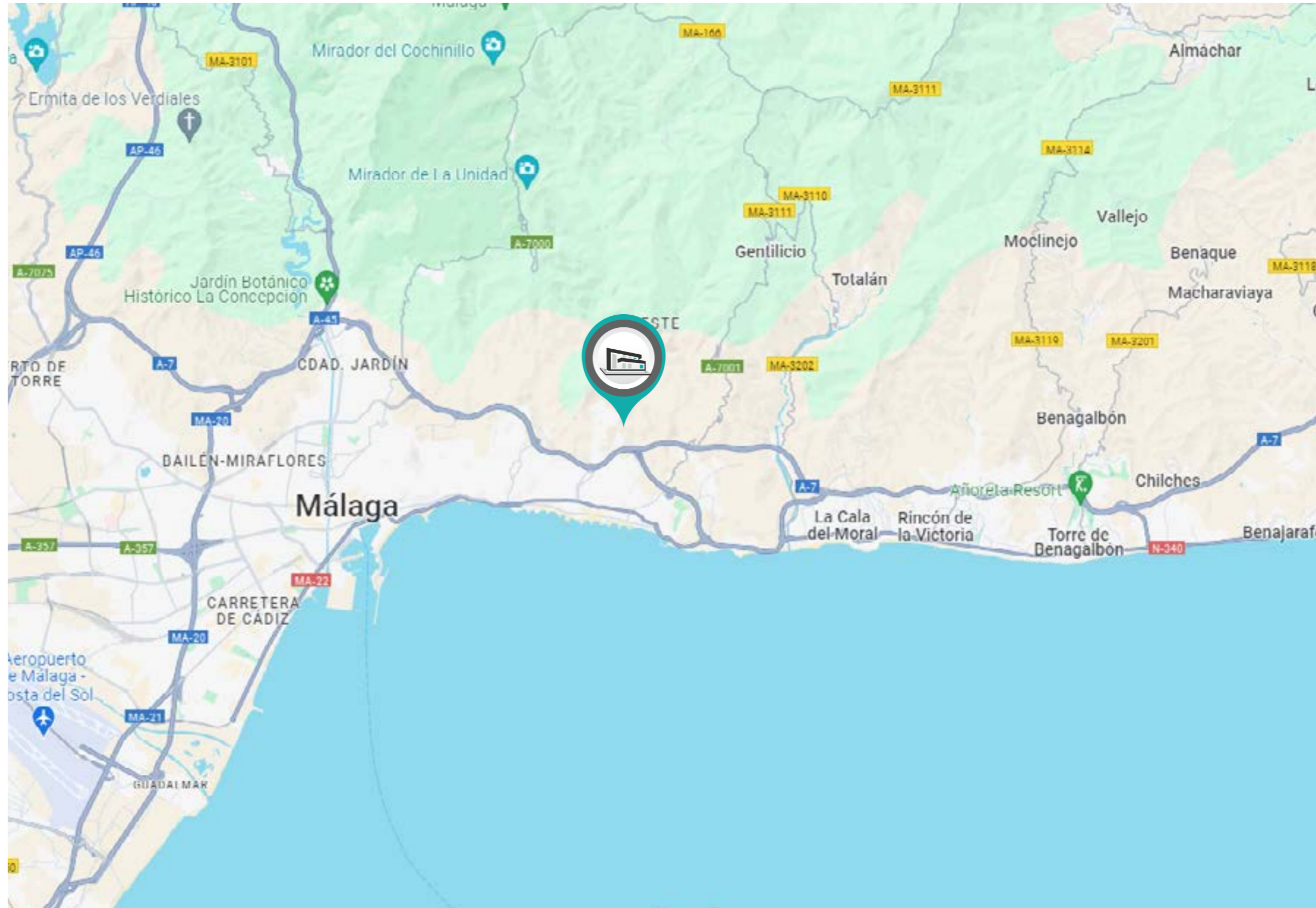
COGITARI HOMES

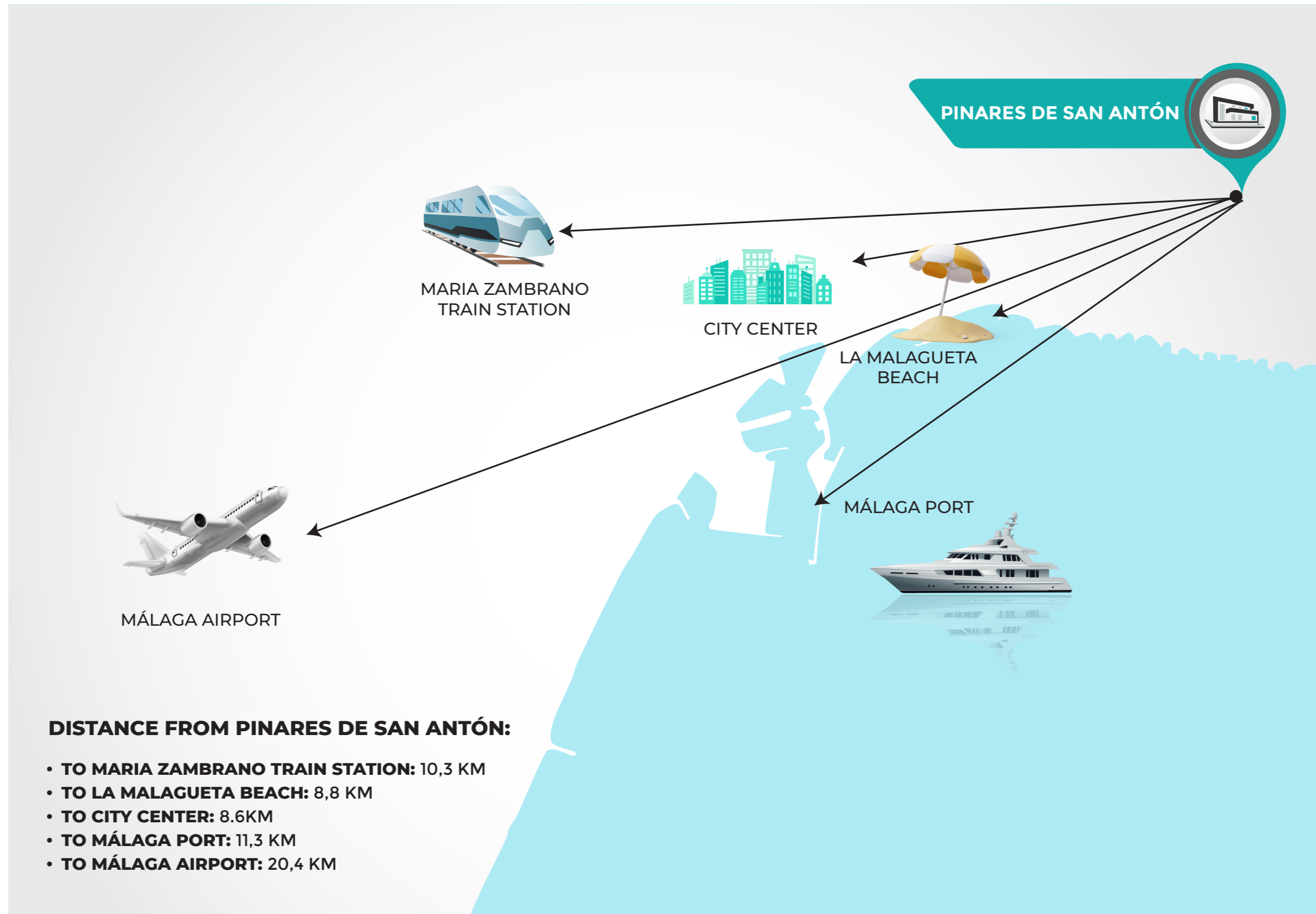


PINARES DE SAN ANTÓN | VILLA 5



COGITARI HOMES

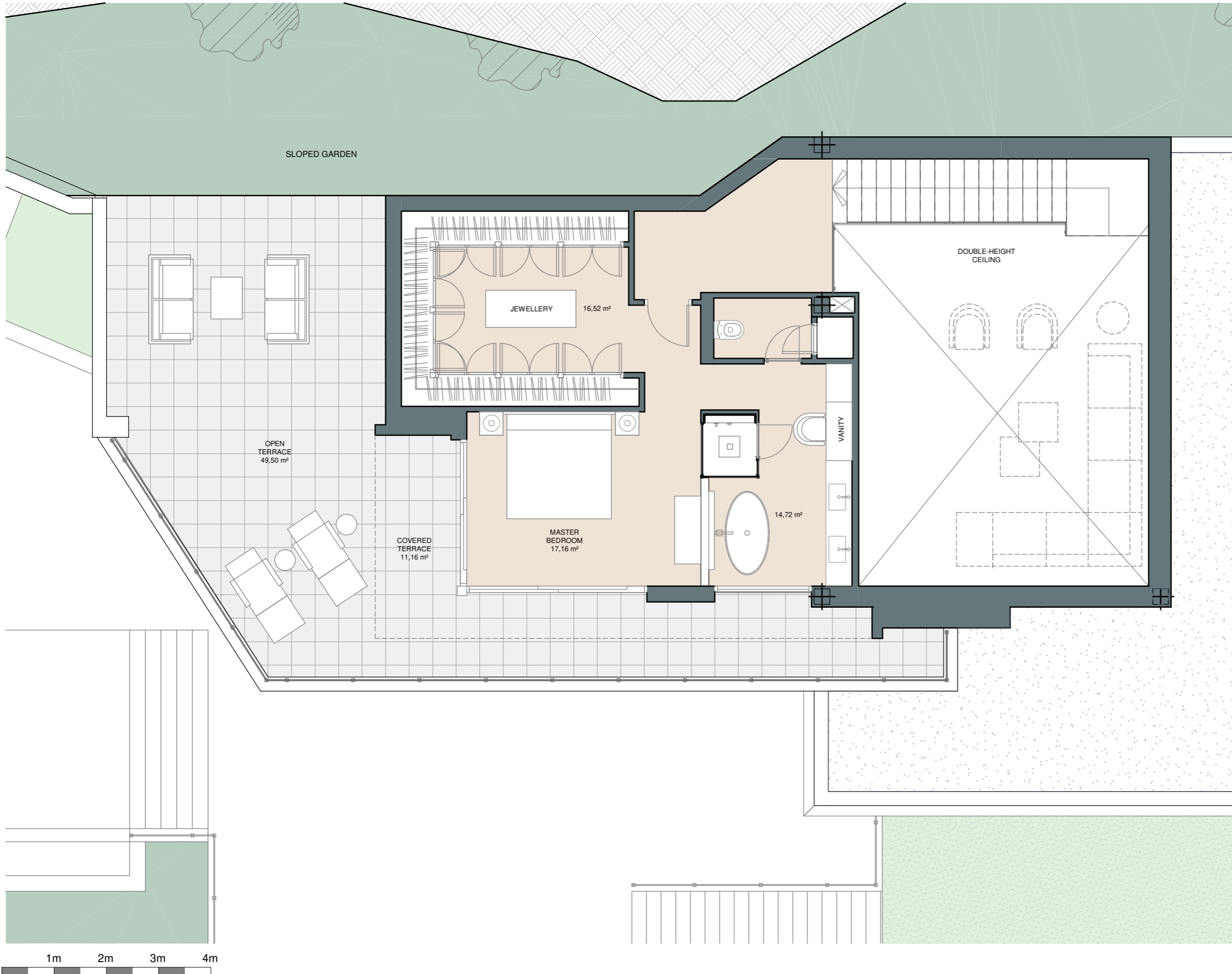




PINARES DE SAN ANTÓN | VILLA 5 | Level + 1



COGITARI HOMES



Villa 5

Built closed area	509 m ²
Covered terrace	100 m ²
Open terrace	186 m ²
Open terrace pergola	0 m ²
Total terrace	286 m²
Pool 11 x 3,8m	42 m ²
Total built area	837 m²
Plot area	2450 m²

5
 5
 509 m²
 3

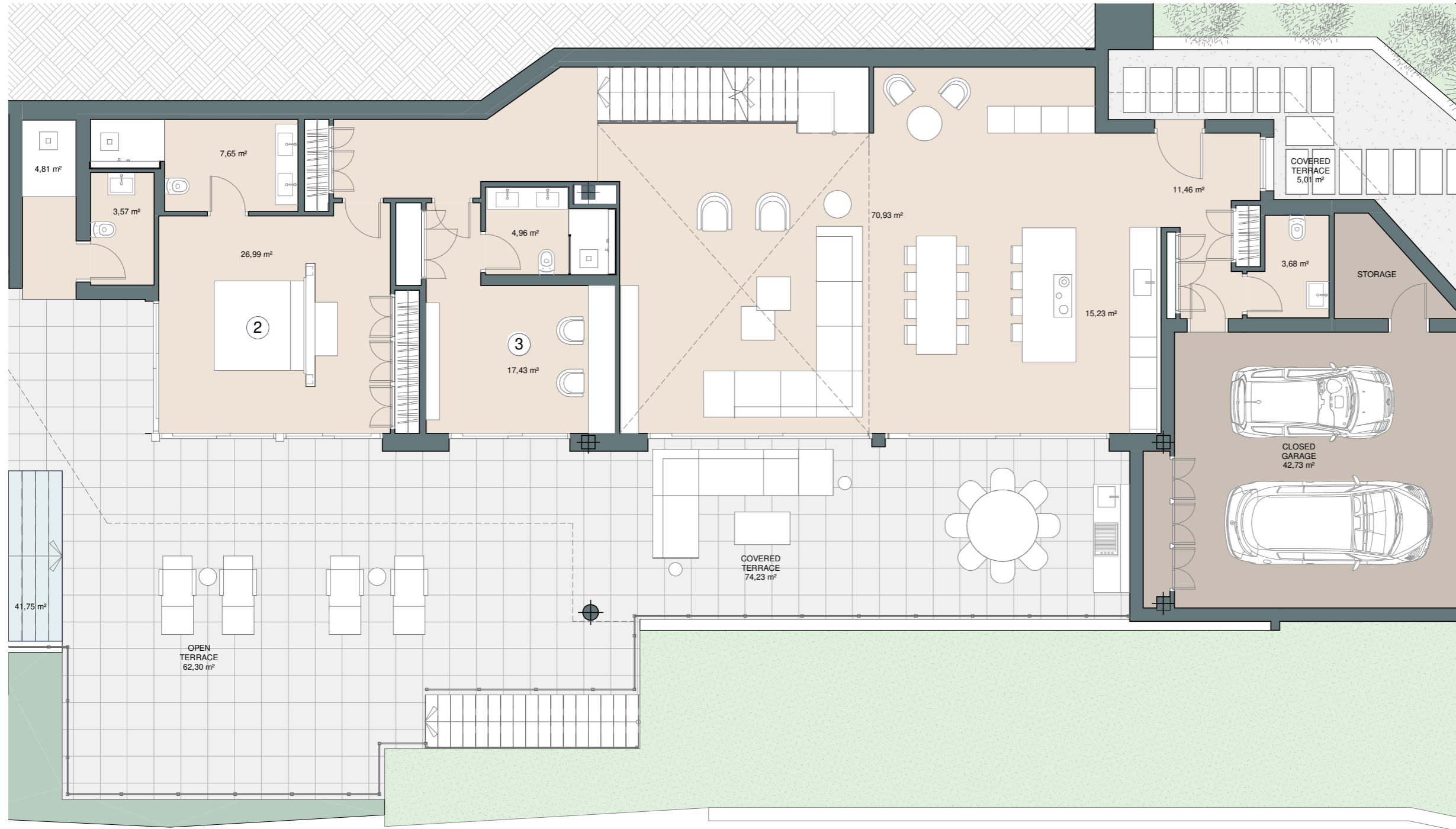


This document is for information only. The areas and measurements are approximate and may be modified for technical reasons and/or administrative issues. The room areas marked on the drawing are usable space.

PINARES DE SAN ANTÓN | VILLA 5 | Ground floor







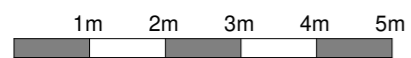
COGITARI HOMES



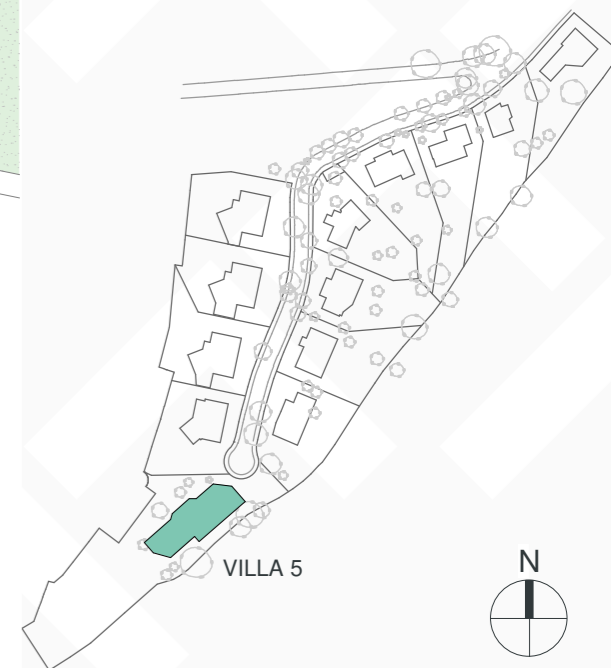
Villa 5

Built closed area	509 m ²
Covered terrace	100 m ²
Open terrace	186 m ²
Open terrace pergola	0 m ²
Total terrace	286 m ²
Pool 11 x 3,8m	42 m ²
Total built area	837 m²
Plot area	2450 m²

 5
  5
  509 m²
 3



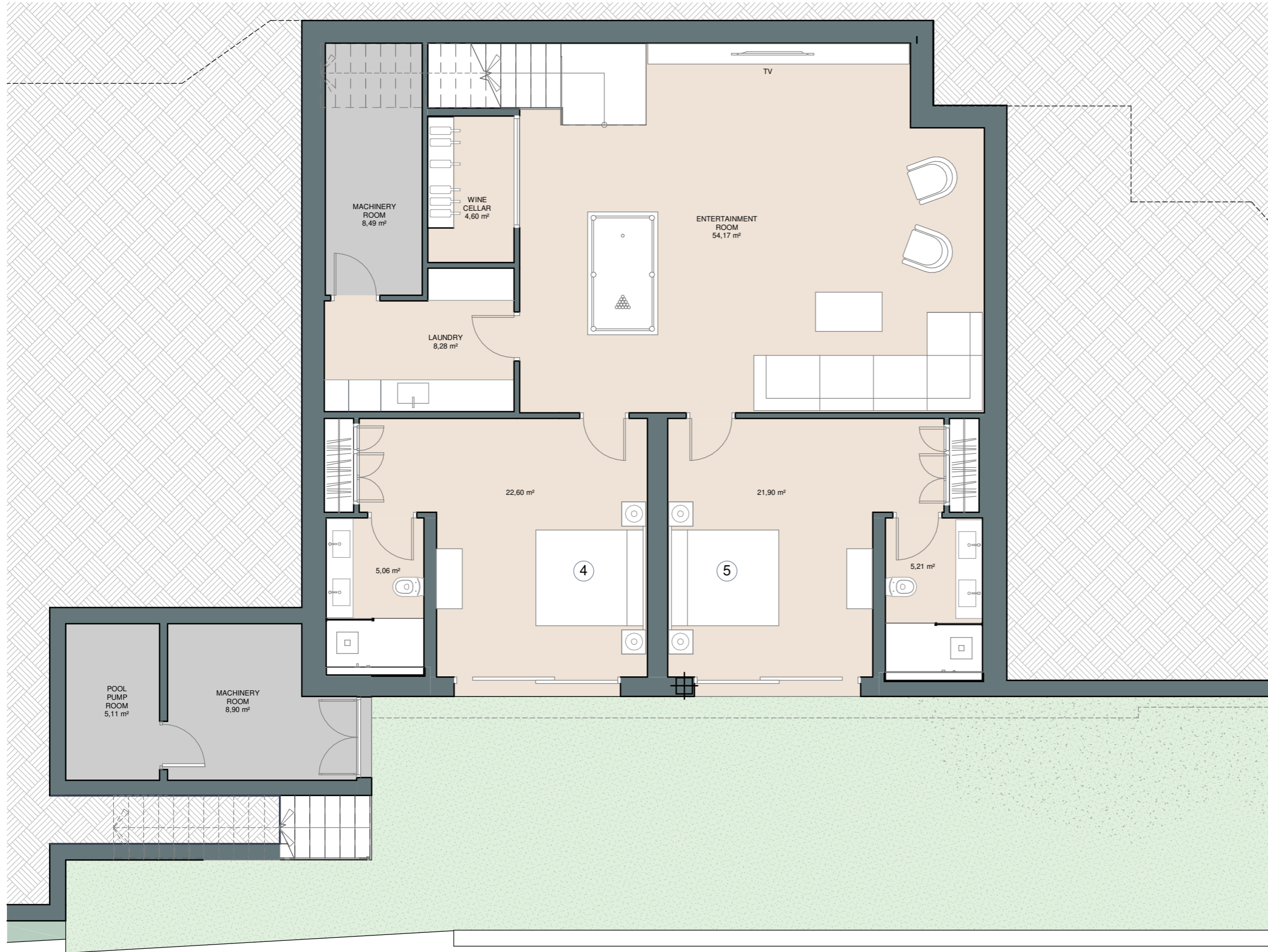
This document is for information only. The areas and measurements are approximate and may be modified for technical reasons and/or administrative issues. The room areas marked on the drawing are usable space.



PINARES DE SAN ANTÓN | VILLA 5 | Entertainment level







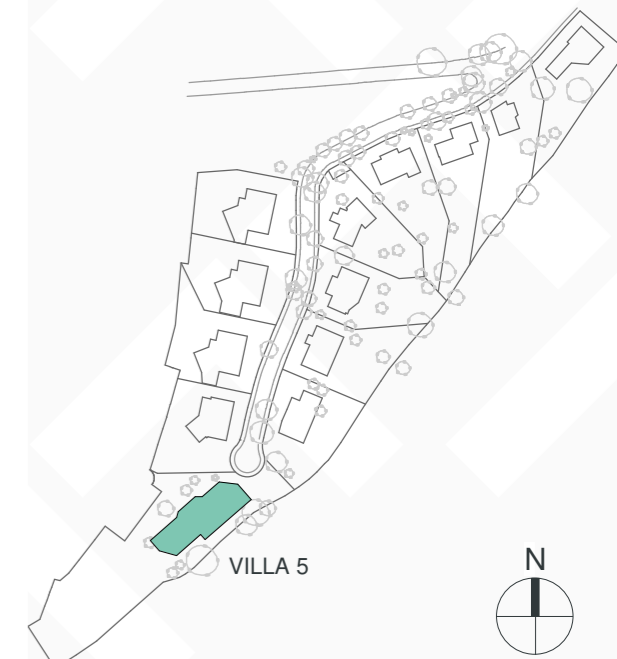
COGITARI HOMES



Villa 5

Built closed area	509 m ²
Covered terrace	100 m ²
Open terrace	186 m ²
Open terrace pergola	0 m ²
Total terrace	286 m²
Pool 11 x 3,8m	42 m ²
Total built area	837 m²
Plot area	2450 m²

 5
  5
  509 m²
 3



This document is for information only. The areas and measurements are approximate and may be modified for technical reasons and/or administrative issues. The room areas marked on the drawing are usable space.

PINARES DE SAN ANTÓN | VILLA 5



COGITARI HOMES





PINARES DE SAN ANTÓN | VILLA 5



COGITARI HOMES



PINARES DE SAN ANTÓN | VILLA 5



COGITARI HOMES

