

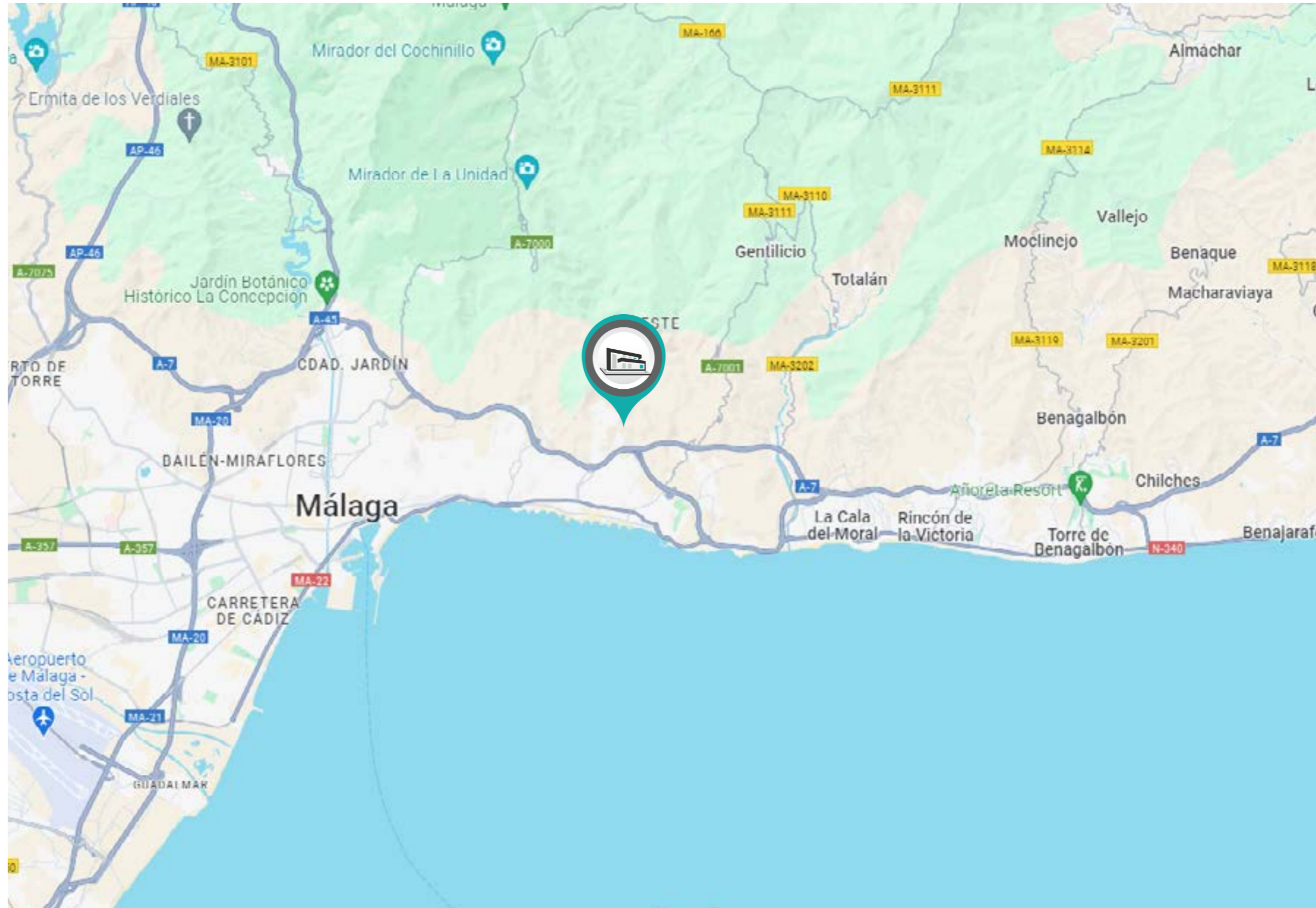
PINARES DE SAN ANTÓN | VILLA 4

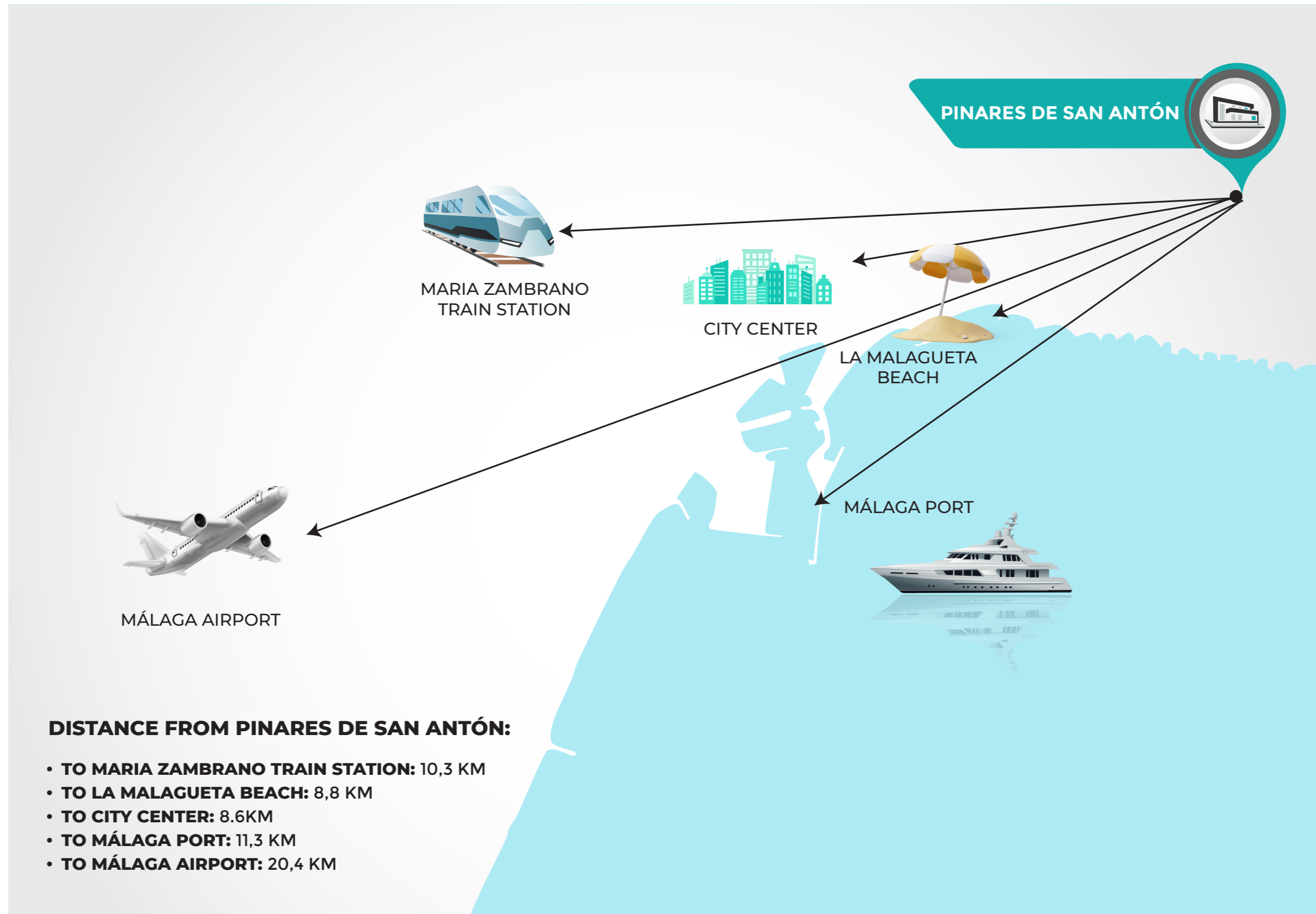


PINARES DE SAN ANTÓN | VILLA 4



COGITARI HOMES

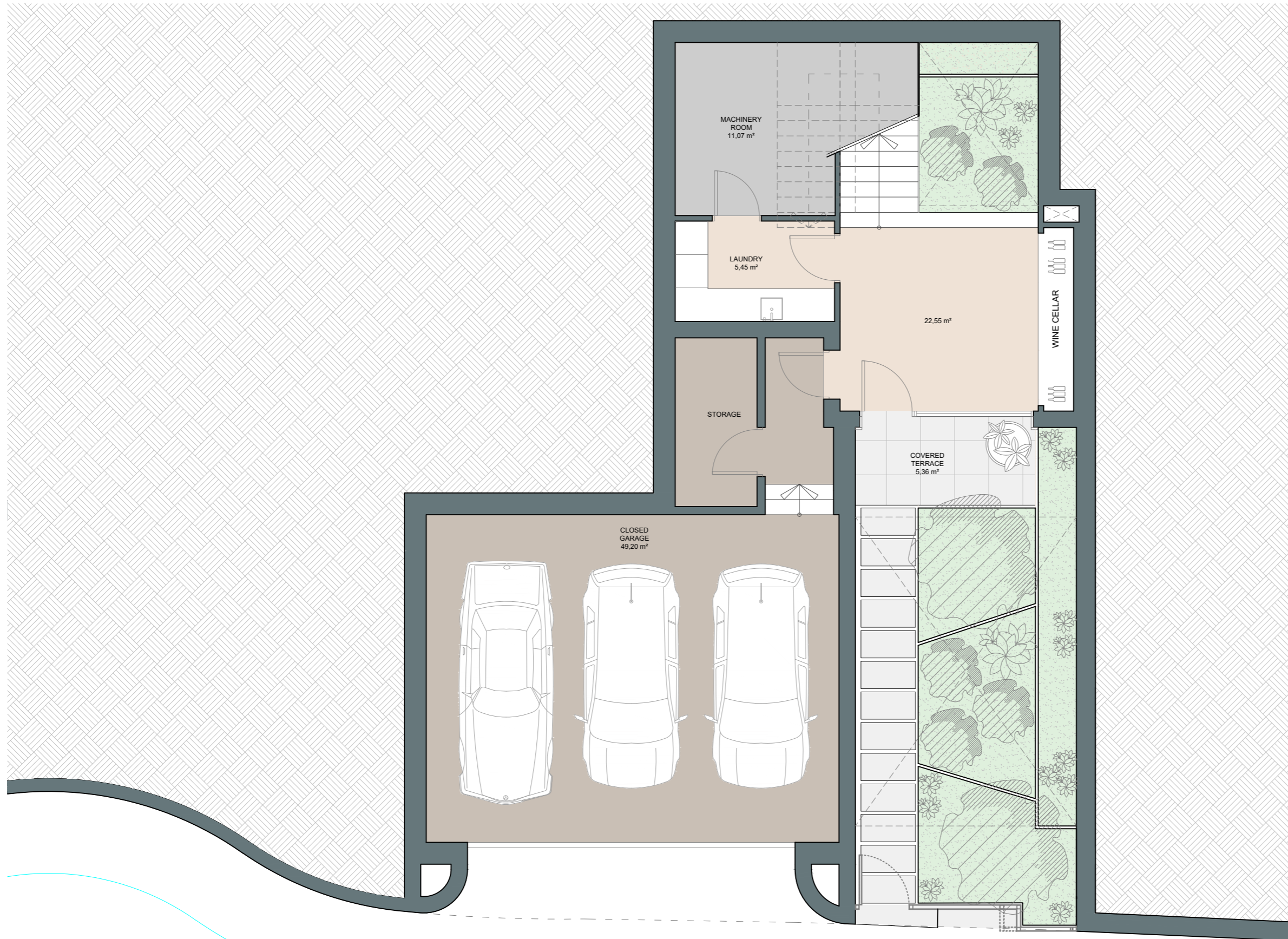




PINARES DE SAN ANTÓN | VILLA 4 | Entertainment Level







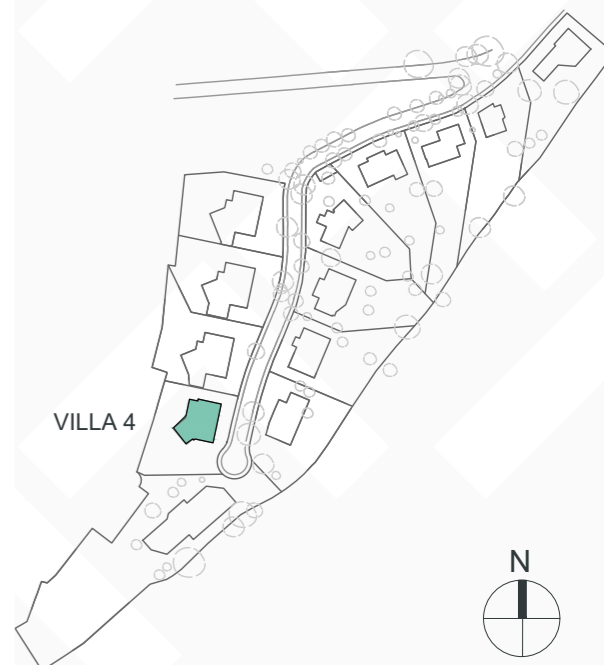
COGITARI HOMES



Villa 4

Built closed area	318 m ²
Covered terrace	30 m ²
Open terrace	171 m ²
Open terrace pergola	9 m ²
Total terrace	210 m²
Pool 9 x 3,8m	38 m ²
Total built area	566 m²
Plot area	869 m²

 4
  3
  318 m²
 3

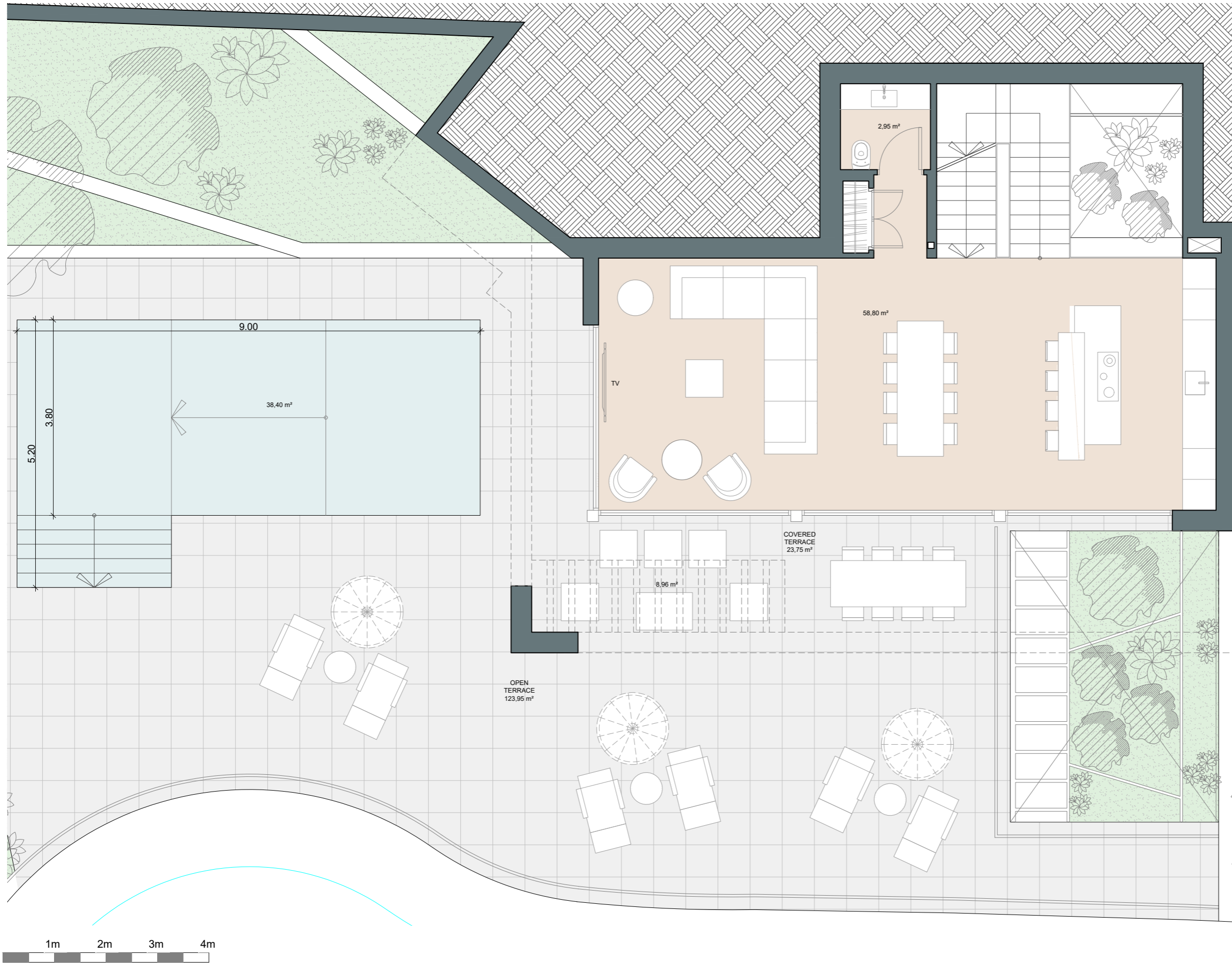


This document is for information only. The areas and measurements are approximate and may be modified for technical reasons and/or administrative issues. The room areas marked on the drawing are usable space.

PINARES DE SAN ANTÓN | VILLA 4 | Ground floor







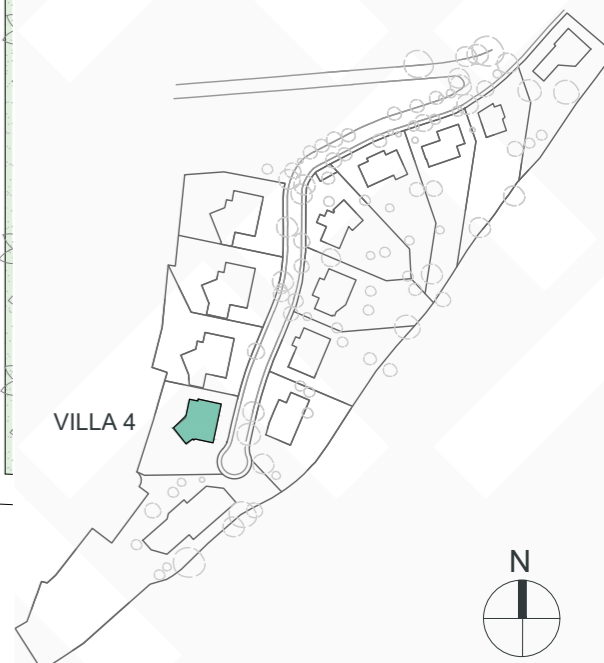
COGITARI HOMES



Villa 4

Built closed area	318 m ²
Covered terrace	30 m ²
Open terrace	171 m ²
Open terrace pergola	9 m ²
Total terrace	210 m²
Pool 9 x 3,8m	38 m ²
Total built area	566 m²
Plot area	869 m²

 4
  3
  318 m²
  3

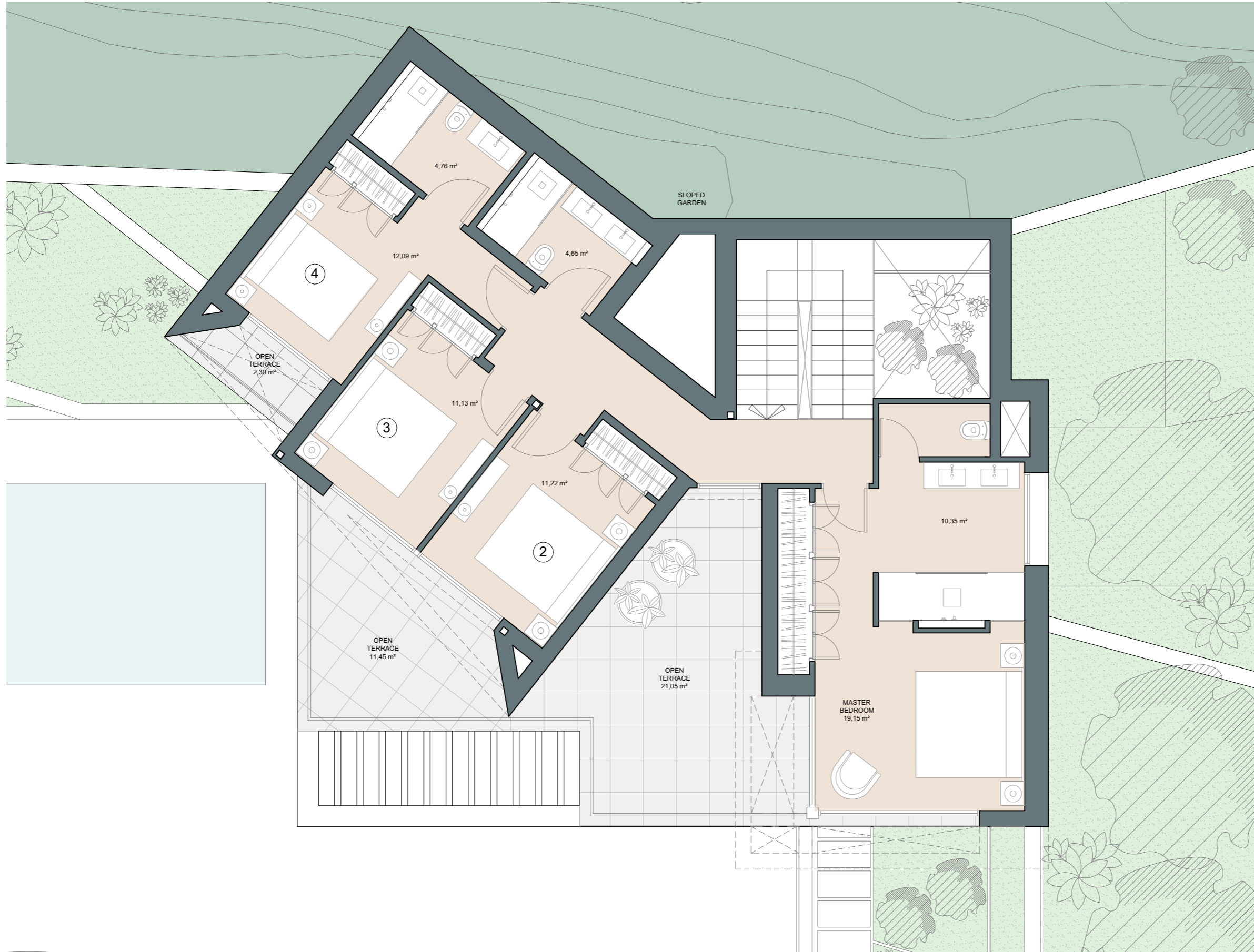


This document is for information only. The areas and measurements are approximate and may be modified for technical reasons and/or administrative issues. The room areas marked on the drawing are usable space.

PINARES DE SAN ANTÓN | VILLA 4 | Level +1







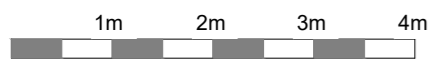
COGITARI HOMES



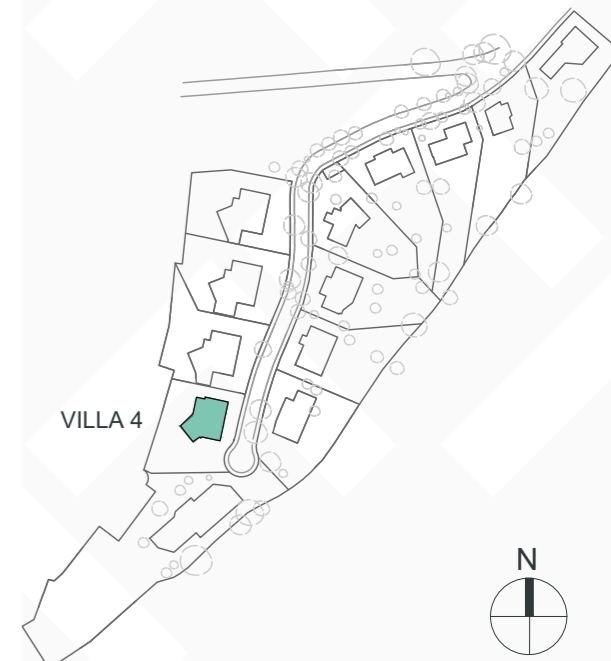
Villa 4

Built closed area	318 m ²
Covered terrace	30 m ²
Open terrace	171 m ²
Open terrace pergola	9 m ²
Total terrace	210 m²
Pool 9 x 3,8m	38 m ²
Total built area	566 m²
Plot area	869 m²

 4
  3
  318 m²
  3



This document is for information only. The areas and measurements are approximate and may be modified for technical reasons and/or administrative issues. The room areas marked on the drawing are usable space.



PINARES DE SAN ANTÓN | VILLA 4



COGITARI HOMES







PINARES DE SAN ANTÓN | VILLA 4



COGITARI HOMES

