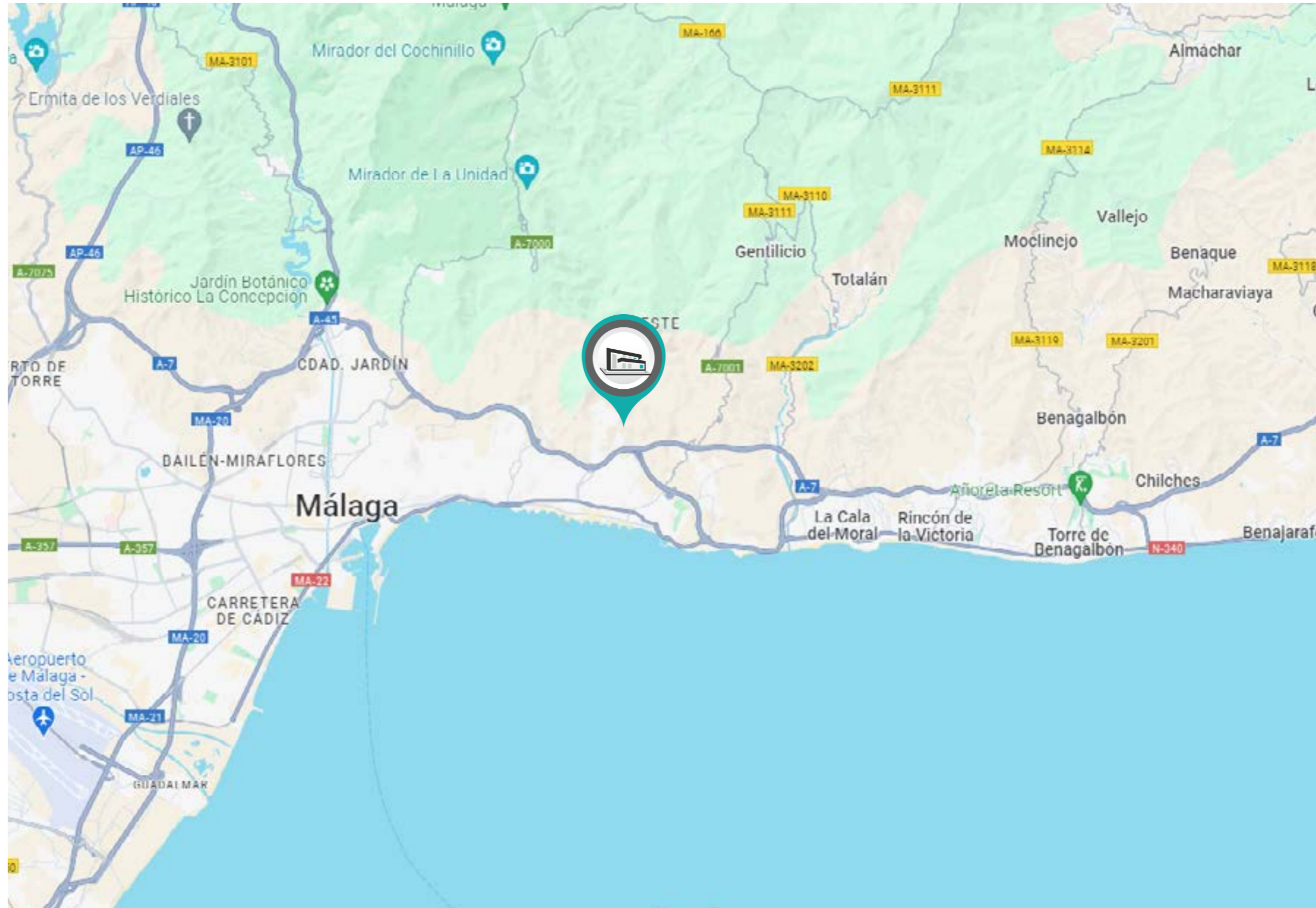


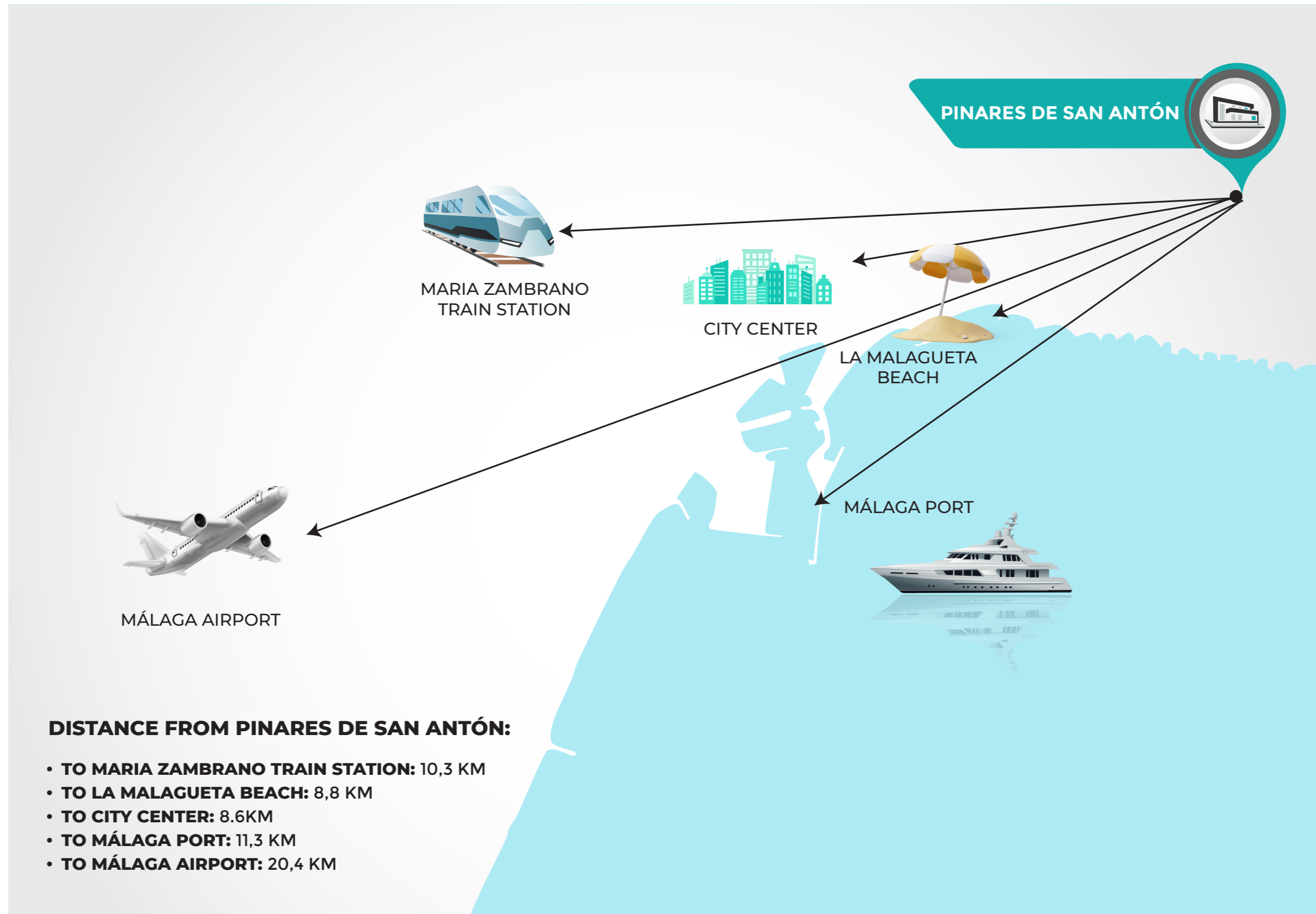


PINARES DE SAN ANTÓN | VILLA 3



COGITARI HOMES

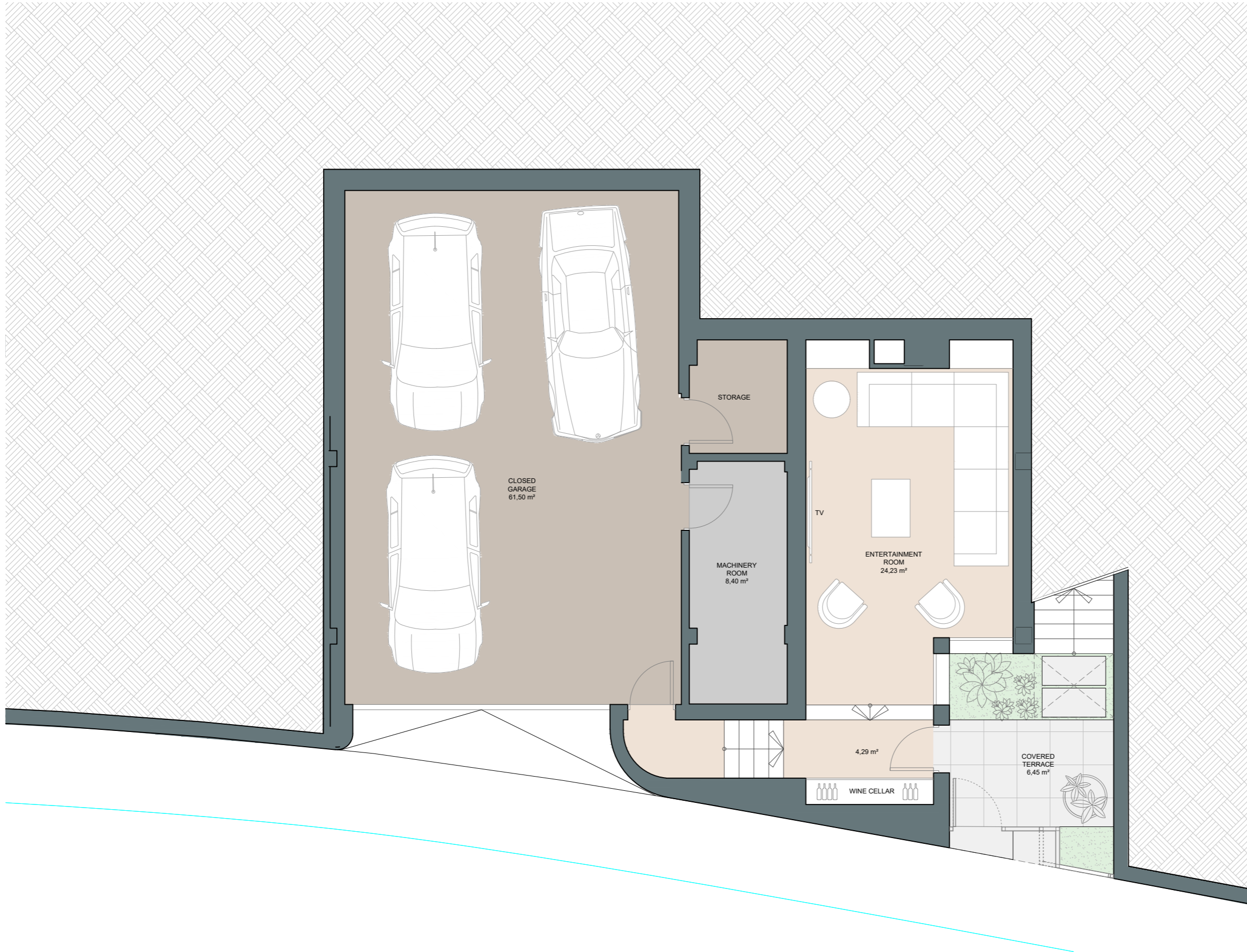




PINARES DE SAN ANTÓN | VILLA 3 | Entertainment Level







COGITARI HOMES



Villa 3

Built closed area	348 m ²
Covered terrace	25 m ²
Open terrace	186 m ²
Open terrace pergola	31 m ²
Total terrace	242 m²
Pool 9,35 x 3m	28 m ²
Total built area	618 m²
Plot area	920 m²

 4
  3
  348 m²
 3



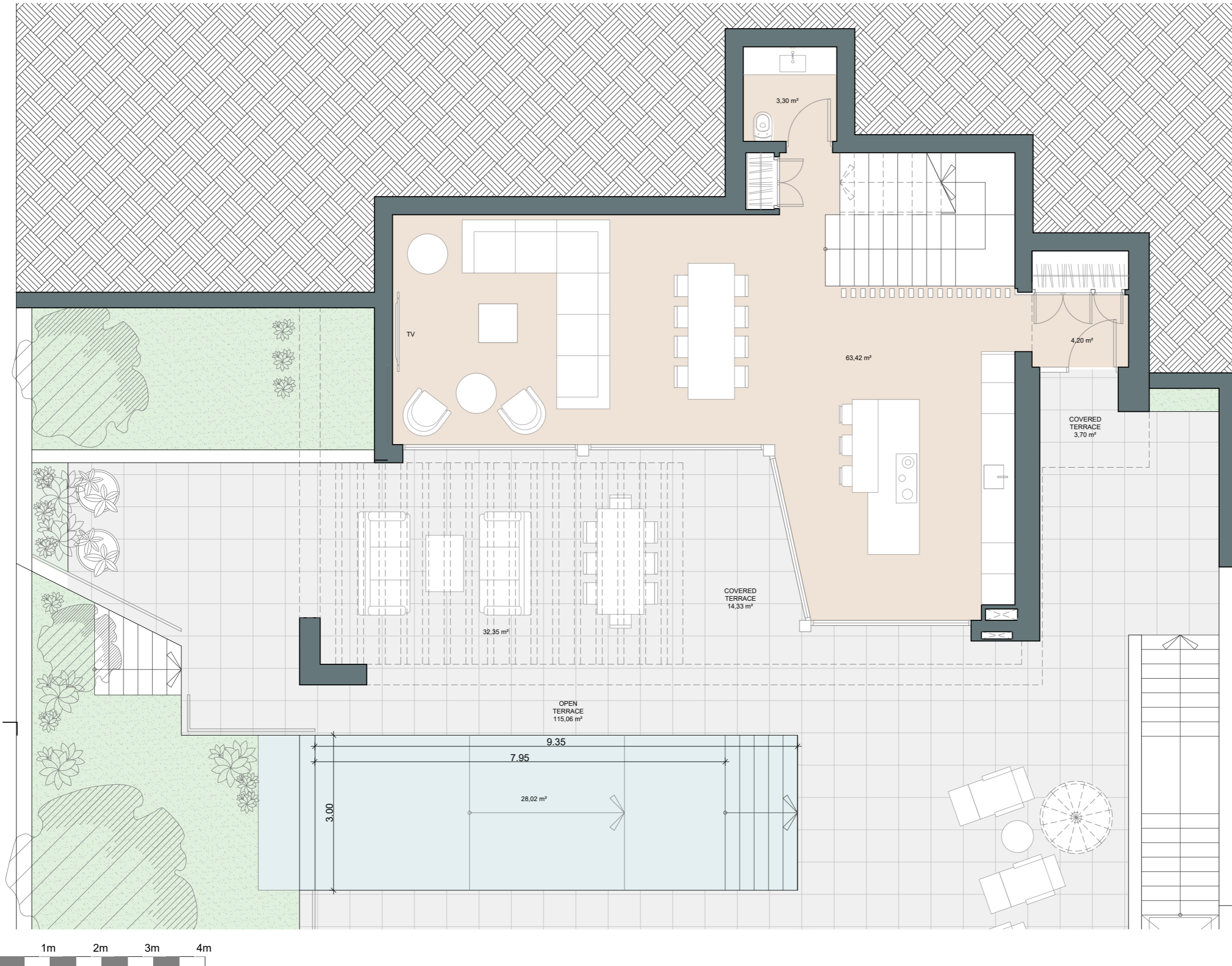
This document is for information only. The areas and measurements are approximate and may be modified for technical reasons and/or administrative issues. The room areas marked on the drawing are usable space.



PINARES DE SAN ANTÓN | VILLA 3 | Ground floor



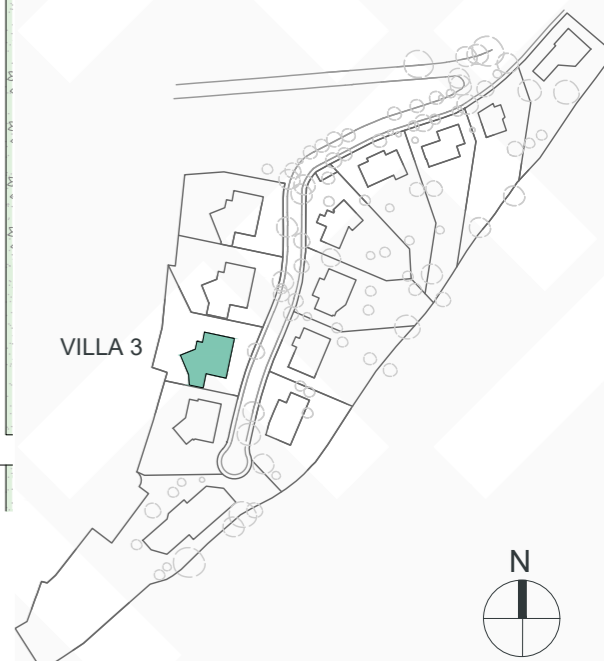
COGITARI HOMES



Villa 3

Built closed area	348 m ²
Covered terrace	25 m ²
Open terrace	186 m ²
Open terrace pergola	31 m ²
Total terrace	242 m²
Pool 9,35 x 3m	28 m ²
Total built area	618 m²
Plot area	920 m²

4
 3
 348 m²
 3

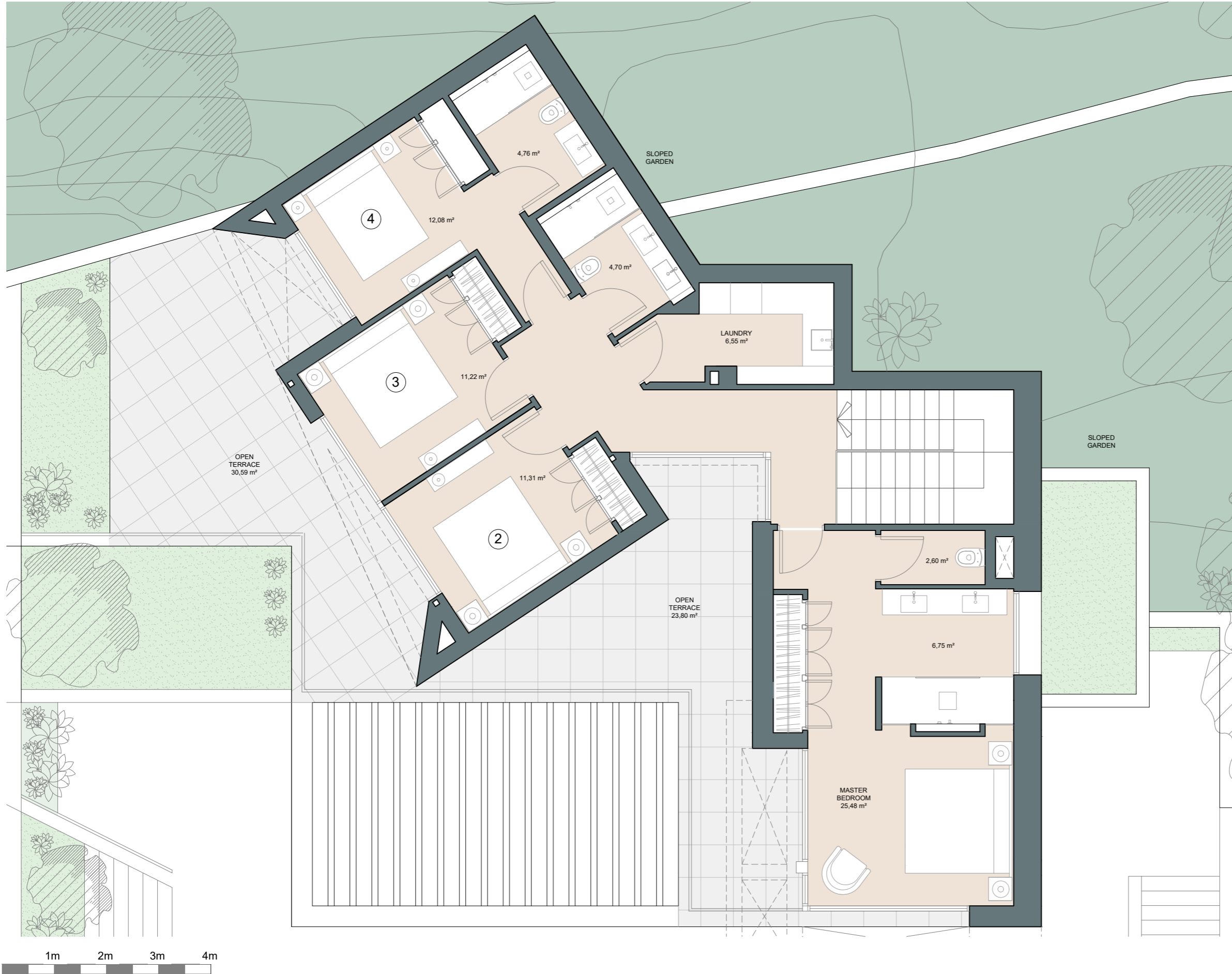


This document is for information only. The areas and measurements are approximate and may be modified for technical reasons and/or administrative issues. The room areas marked on the drawing are usable space.

PINARES DE SAN ANTÓN | VILLA 3 | Level +1







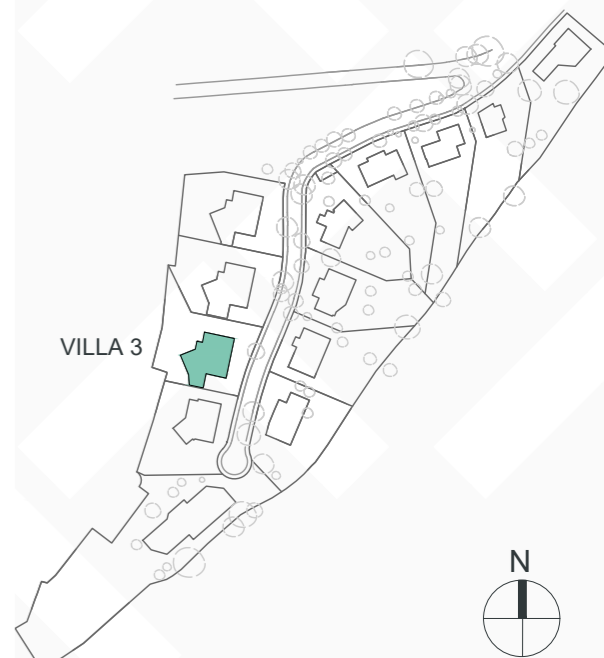
COGITARI HOMES



Villa 3

Built closed area	348 m ²
Covered terrace	25 m ²
Open terrace	186 m ²
Open terrace pergola	31 m ²
Total terrace	242 m²
Pool 9,35 x 3m	28 m ²
Total built area	618 m²
Plot area	920 m²

 4
  3
  348 m²
  3



This document is for information only. The areas and measurements are approximate and may be modified for technical reasons and/or administrative issues. The room areas marked on the drawing are usable space.





PINARES DE SAN ANTÓN | VILLA 3



COGITARI HOMES

