

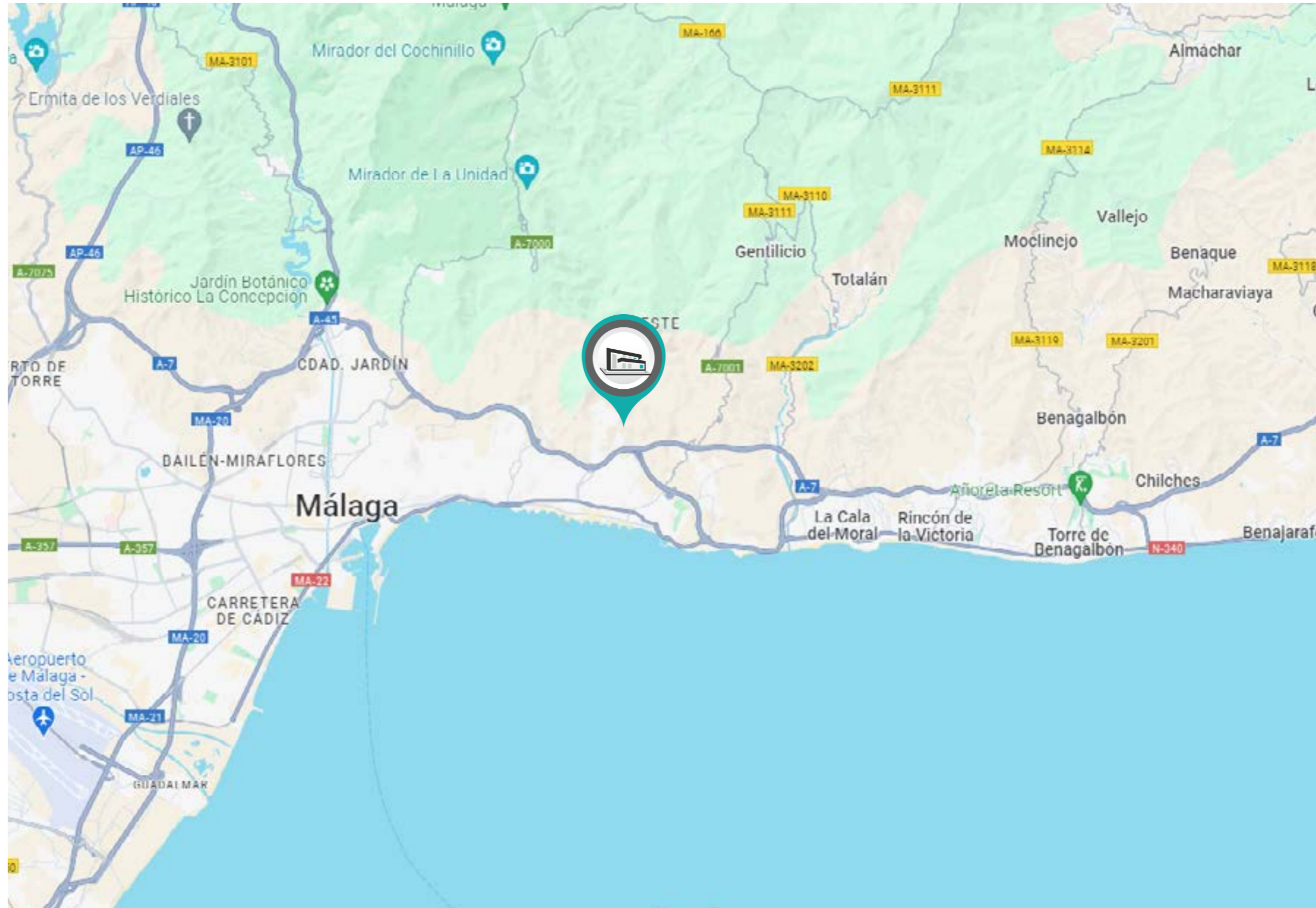
# PINARES DE SAN ANTÓN | VILLA 1

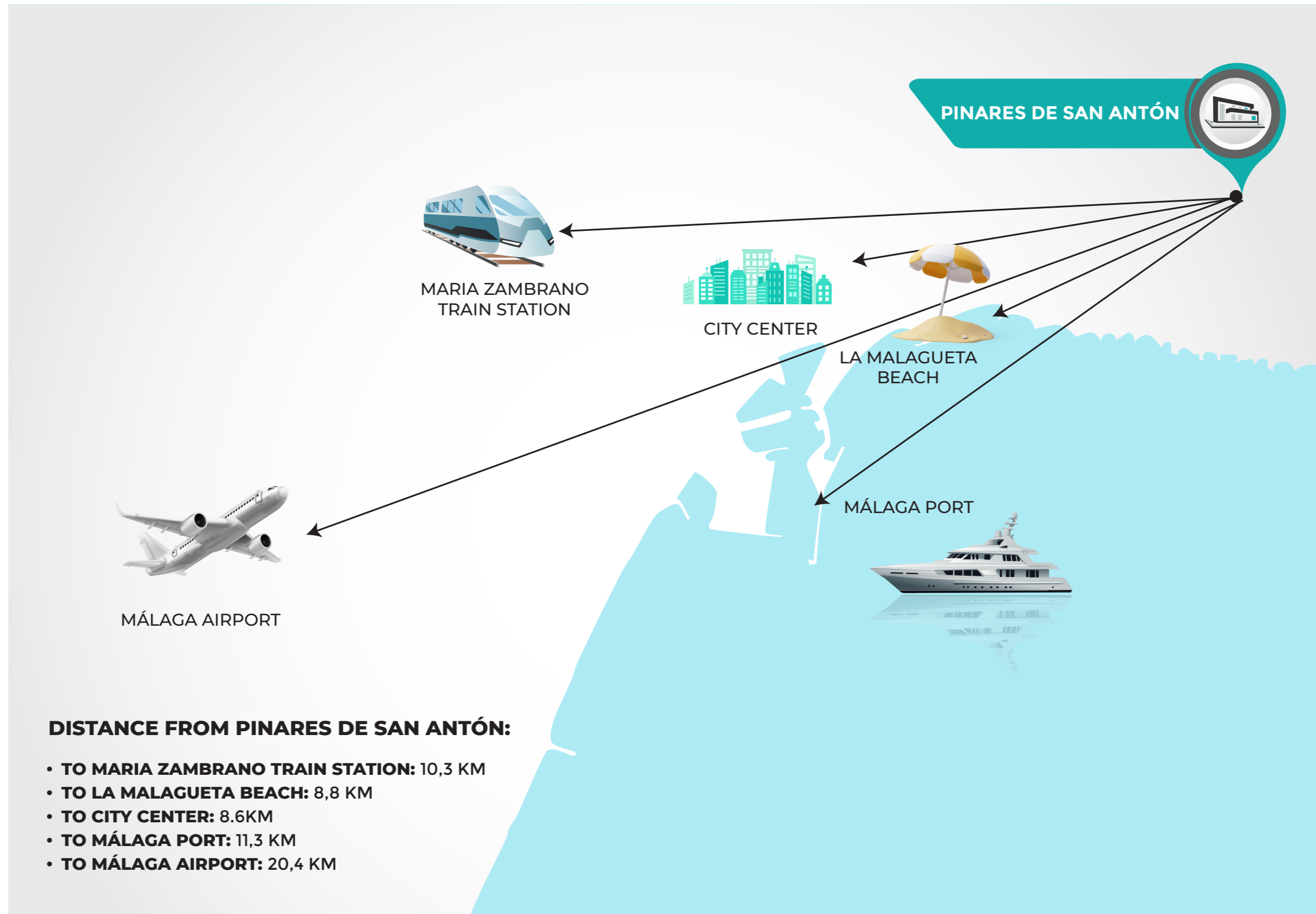


# PINARES DE SAN ANTÓN | VILLA 1



COGITARI HOMES

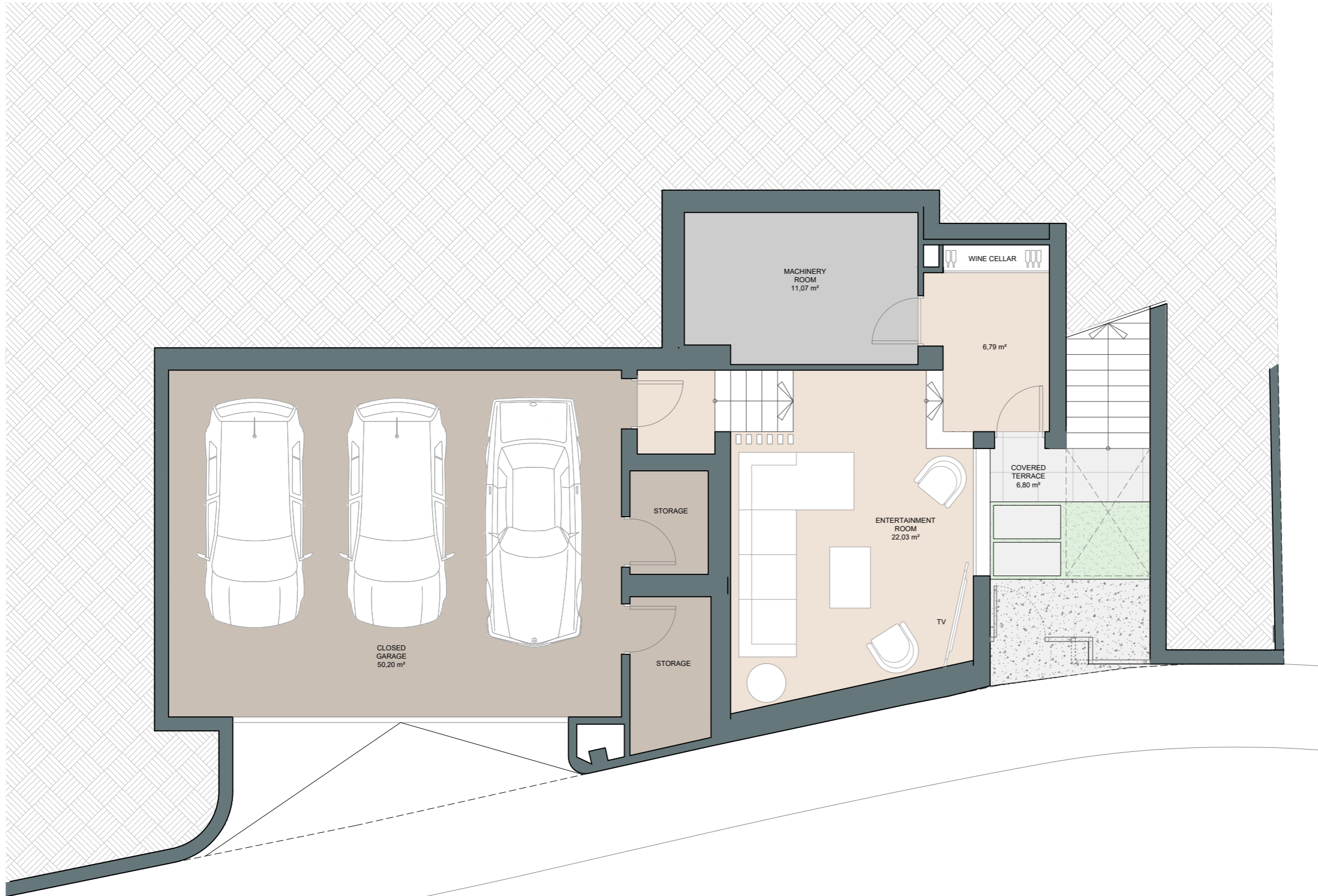




# PINARES DE SAN ANTÓN | VILLA 1 | Entertainment Level







COGITARI HOMES



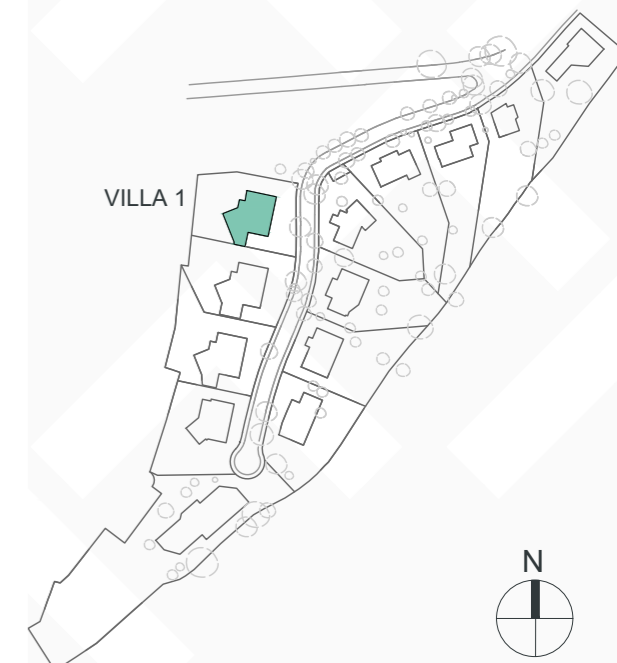
## Villa 1

Built closed area	341 m <sup>2</sup>
Covered terrace	26 m <sup>2</sup>
Open terrace	218 m <sup>2</sup>
Open terrace pergola	31 m <sup>2</sup>
<b>Total terrace</b>	<b>275 m<sup>2</sup></b>
Pool 9,8 x 3,8m	37 m <sup>2</sup>
<b>Total built area</b>	<b>653 m<sup>2</sup></b>
<b>Plot area</b>	<b>914 m<sup>2</sup></b>

 4
  3
  341 m<sup>2</sup>
 3



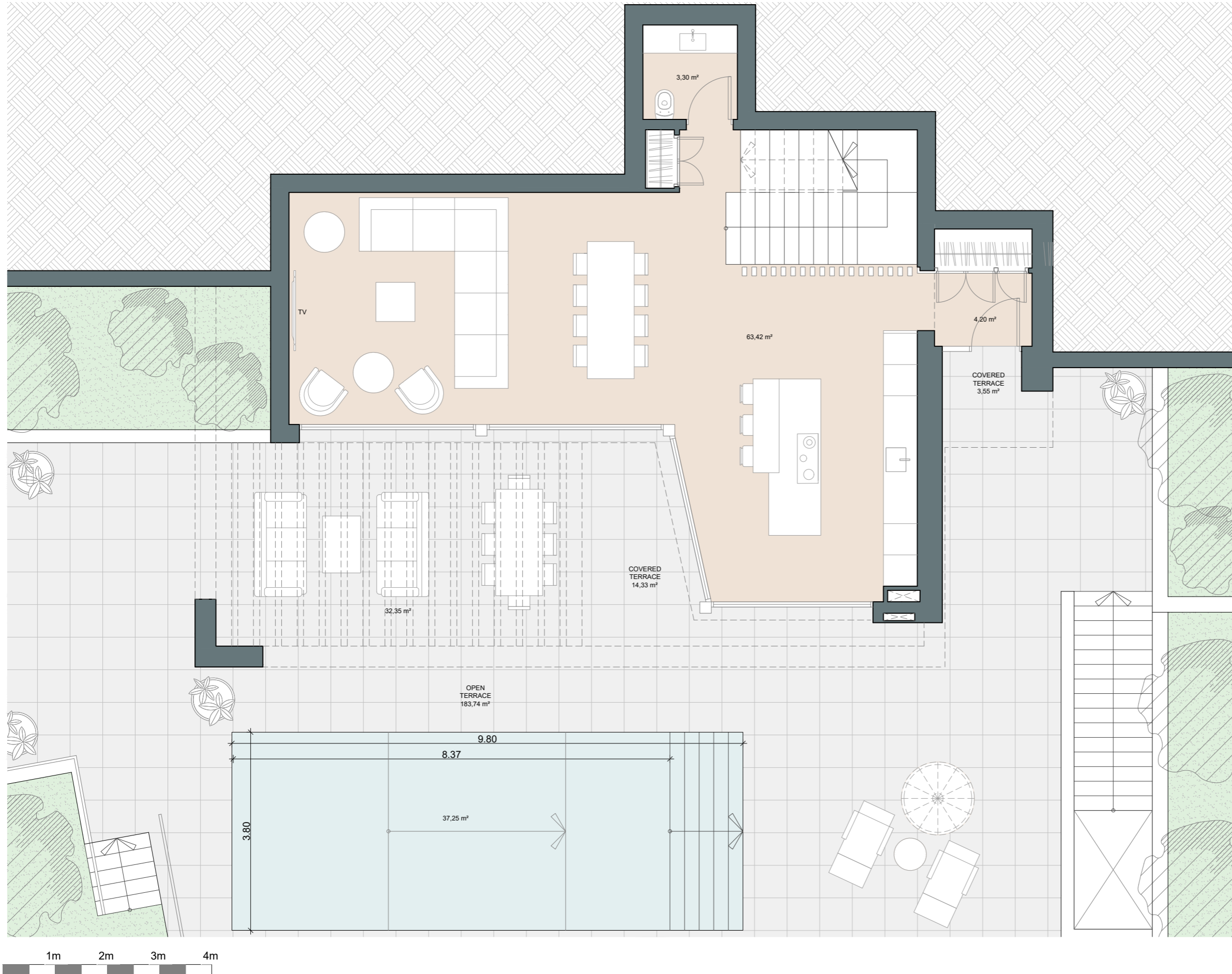
This document is for information only. The areas and measurements are approximate and may be modified for technical reasons and/or administrative issues. The room areas marked on the drawing are usable space.



# PINARES DE SAN ANTÓN | VILLA 1 | Ground floor







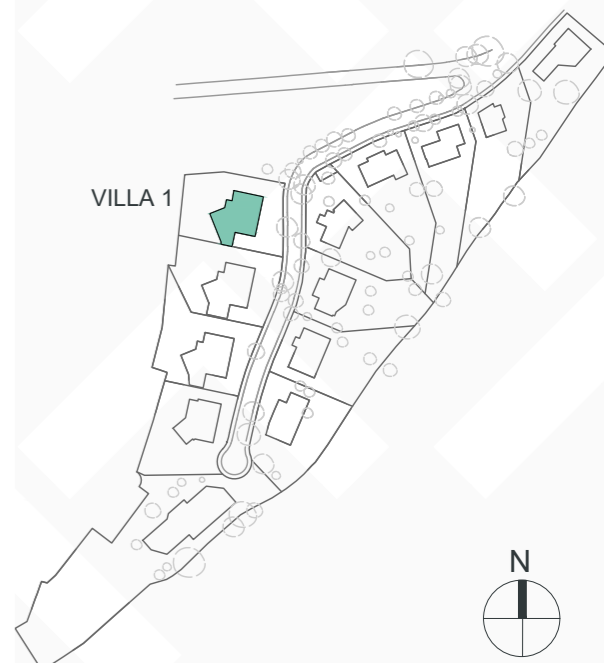
COGITARI HOMES



## Villa 1

Built closed area	341 m <sup>2</sup>
Covered terrace	26 m <sup>2</sup>
Open terrace	218 m <sup>2</sup>
Open terrace pergola	31 m <sup>2</sup>
<b>Total terrace</b>	<b>275 m<sup>2</sup></b>
Pool 9,8 x 3,8m	37 m <sup>2</sup>
<b>Total built area</b>	<b>653 m<sup>2</sup></b>
<b>Plot area</b>	<b>914 m<sup>2</sup></b>

 4  
 3  
 341 m<sup>2</sup>  
 3

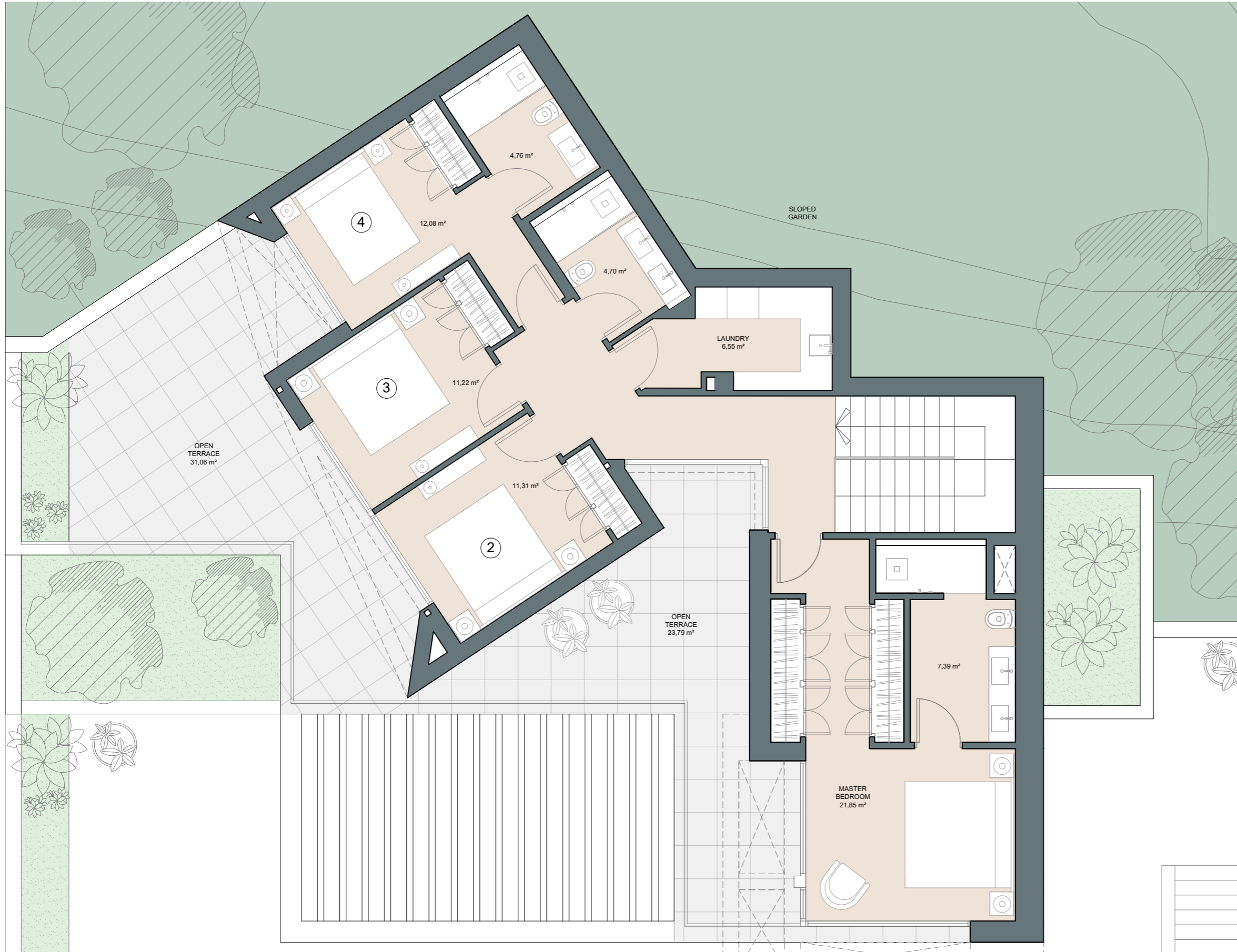


This document is for information only. The areas and measurements are approximate and may be modified for technical reasons and/or administrative issues. The room areas marked on the drawing are usable space.

# PINARES DE SAN ANTÓN | VILLA 1 | Level +1







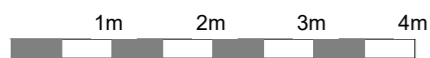
COGITARI HOMES



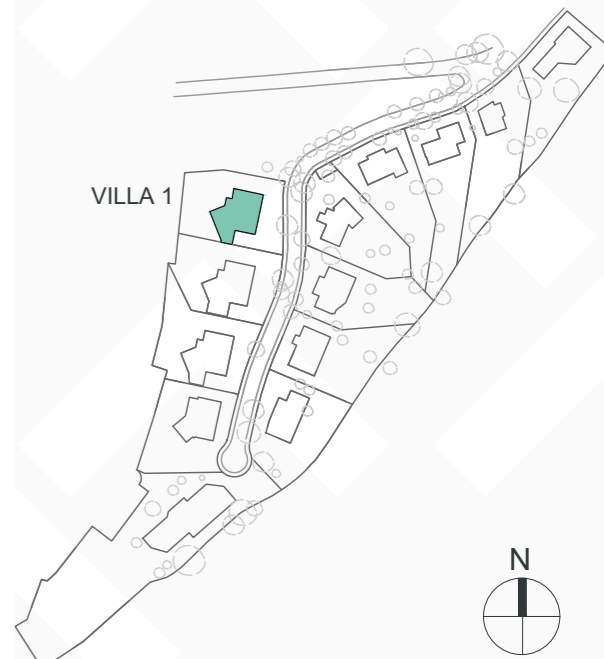
## Villa 1

Built closed area	341 m <sup>2</sup>
Covered terrace	26 m <sup>2</sup>
Open terrace	218 m <sup>2</sup>
Open terrace pergola	31 m <sup>2</sup>
<b>Total terrace</b>	<b>275 m<sup>2</sup></b>
Pool 9,8 x 3,8m	37 m <sup>2</sup>
<b>Total built area</b>	<b>653 m<sup>2</sup></b>
<b>Plot area</b>	<b>914 m<sup>2</sup></b>

 4   
  3   
  341 m<sup>2</sup>   
  3



This document is for information only. The areas and measurements are approximate and may be modified for technical reasons and/or administrative issues. The room areas marked on the drawing are usable space.



# PINARES DE SAN ANTÓN | VILLA 1



COGITARI HOMES



# PINARES DE SAN ANTÓN | VILLA 1



COGITARI HOMES



# PINARES DE SAN ANTÓN | VILLA 1



COGITARI HOMES





# PINARES DE SAN ANTÓN | VILLA 1



COGITARI HOMES

