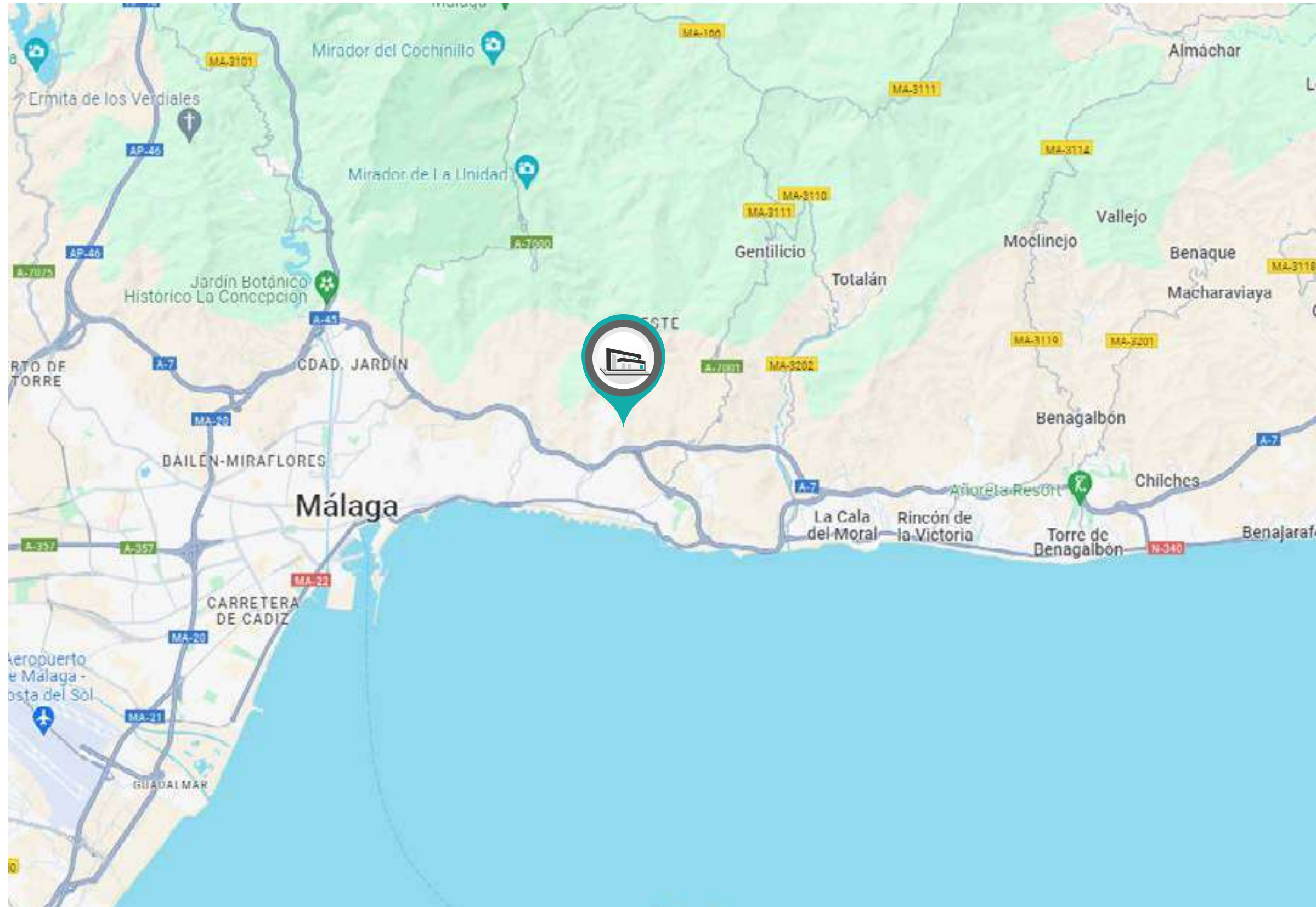
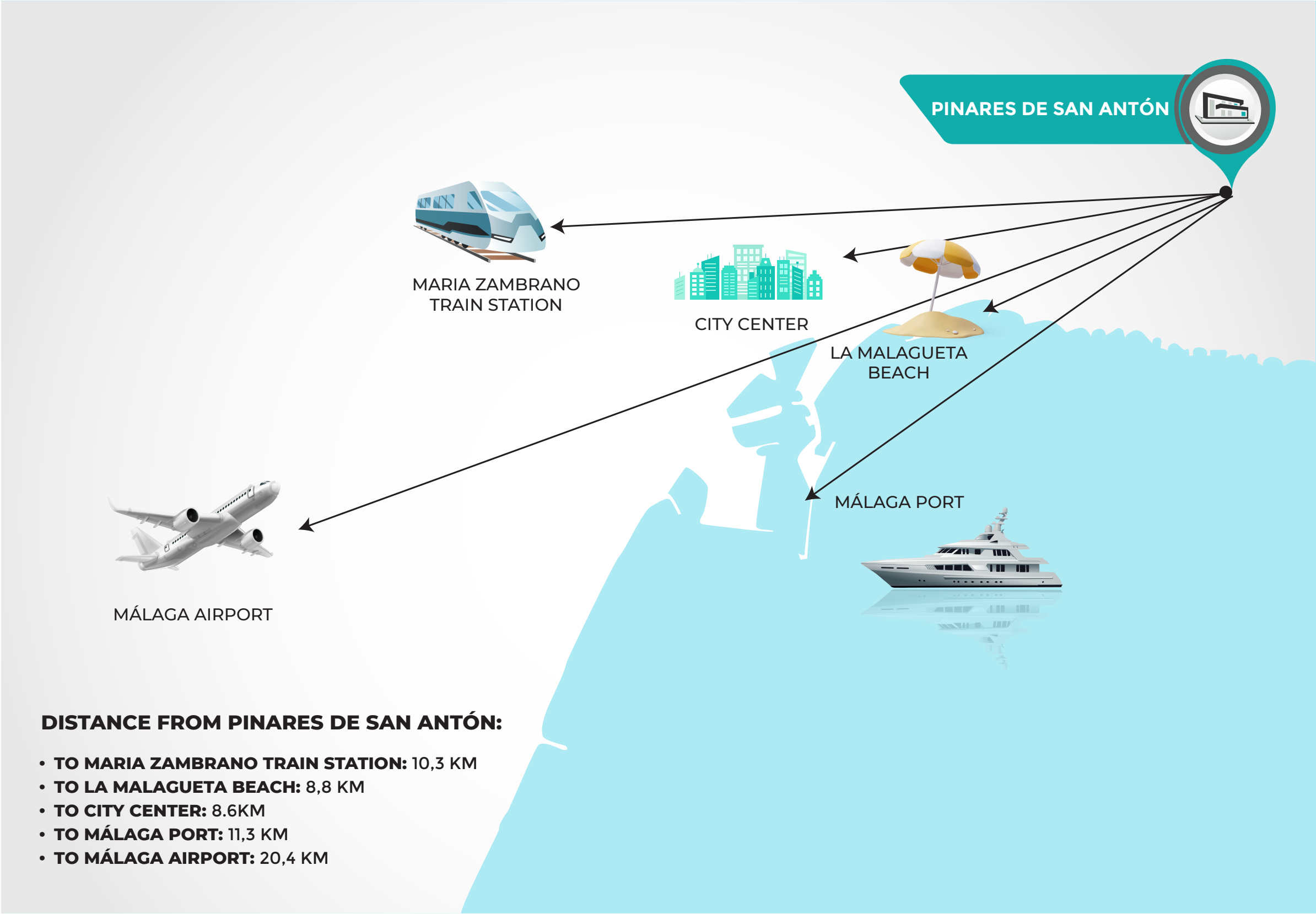


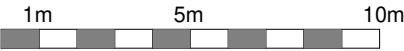
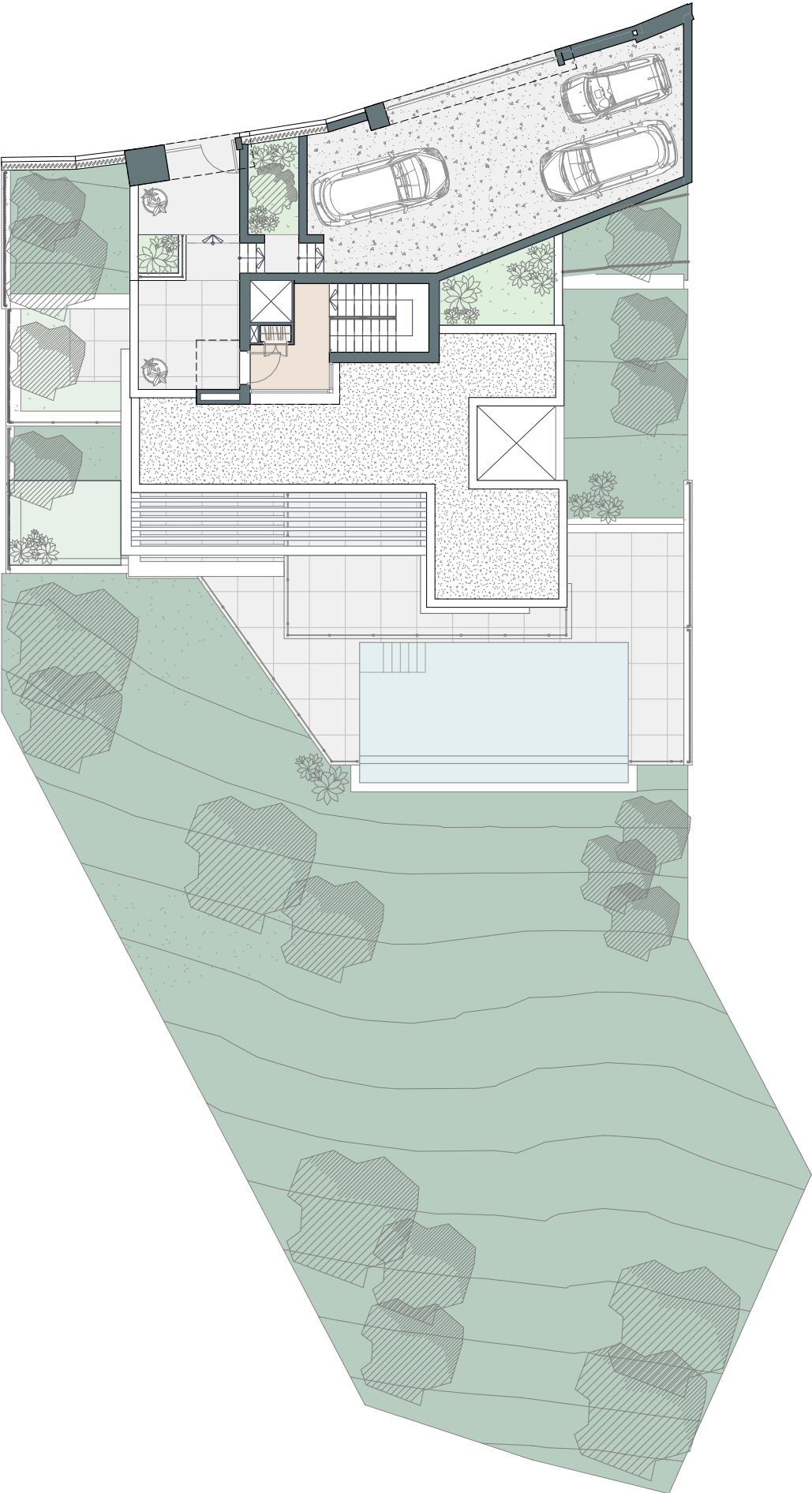


PINARES DE SAN ANTÓN | VILLA 8





PINARES DE SAN ANTÓN | VILLA 8 | Site Plan




This document is for information only. The areas and measurements are approximate and may be modified for technical reasons and/or administrative issues. The room areas marked on the drawing are usable space.


SLOPPED GARDEN


Villa 8


Built closed area	357,07 m²
Covered terrace	27,03 m²
Open terrace	100,07 m²
Total terrace	127,10 m²
Pool	45,57 m²

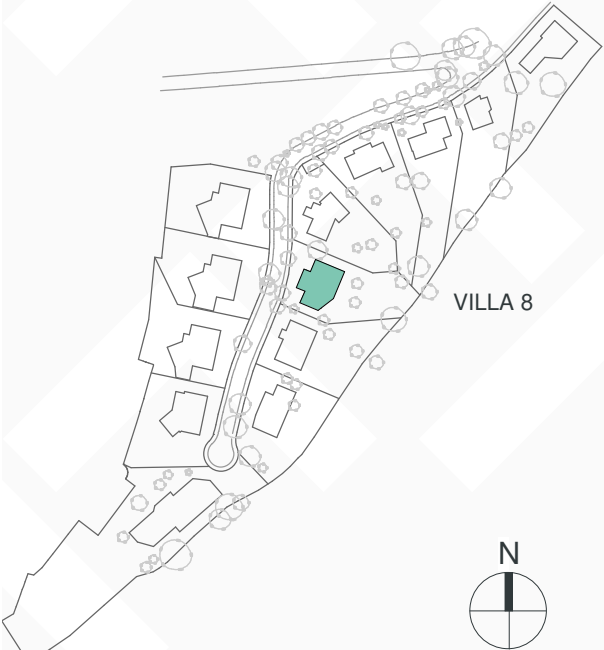
Total built area	529,74 m²
Plot area	915,87 m²


5

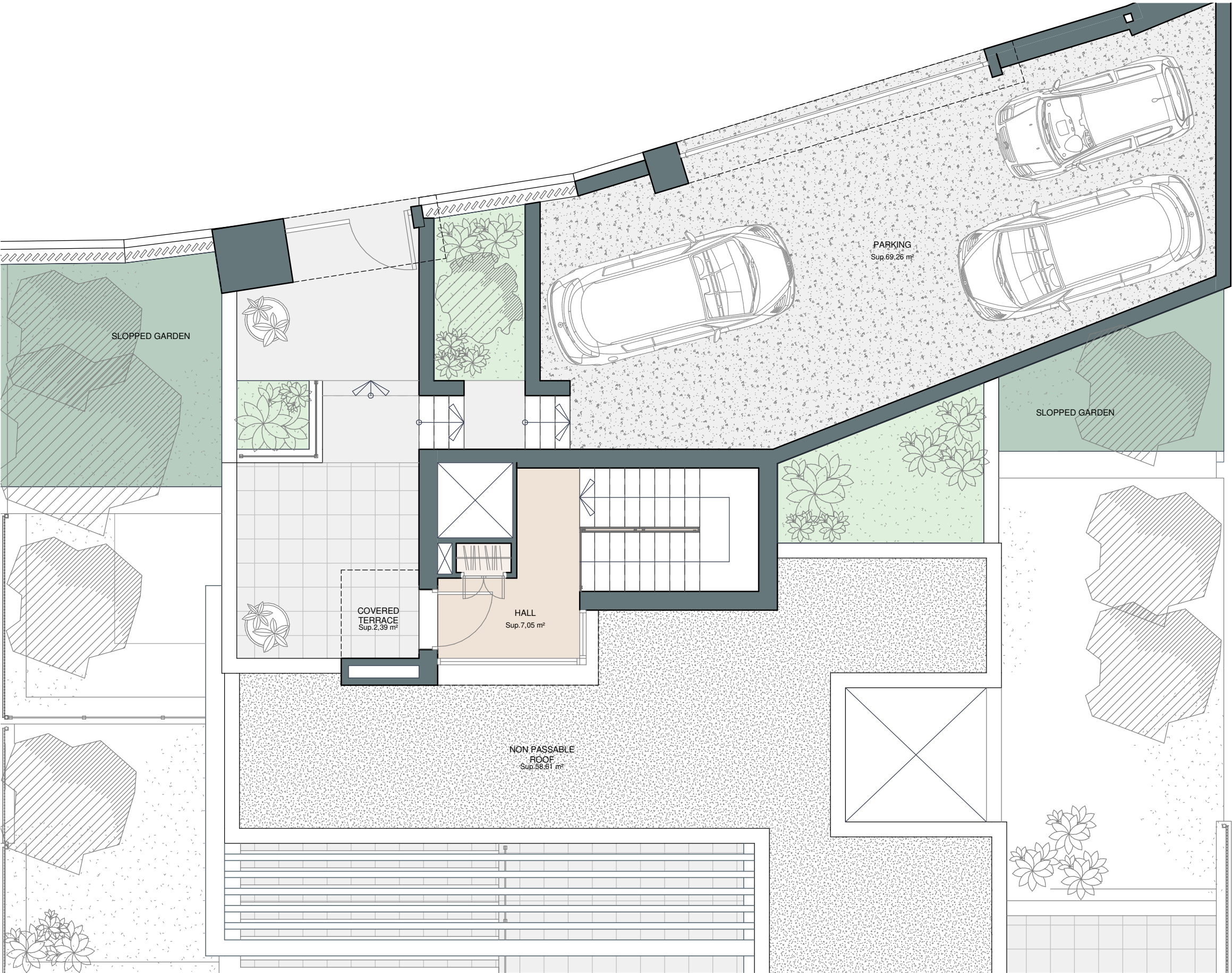

4


357,07 m²


3




PINARES DE SAN ANTÓN | VILLA 8 | Entrance Floor





Villa 8


Built closed area	357,07 m²
Covered terrace	27,03 m²
Open terrace	100,07 m²
Total terrace	127,10 m²
Pool	45,57 m²

Total built area	529,74 m²
Plot area	915,87 m²


5


4

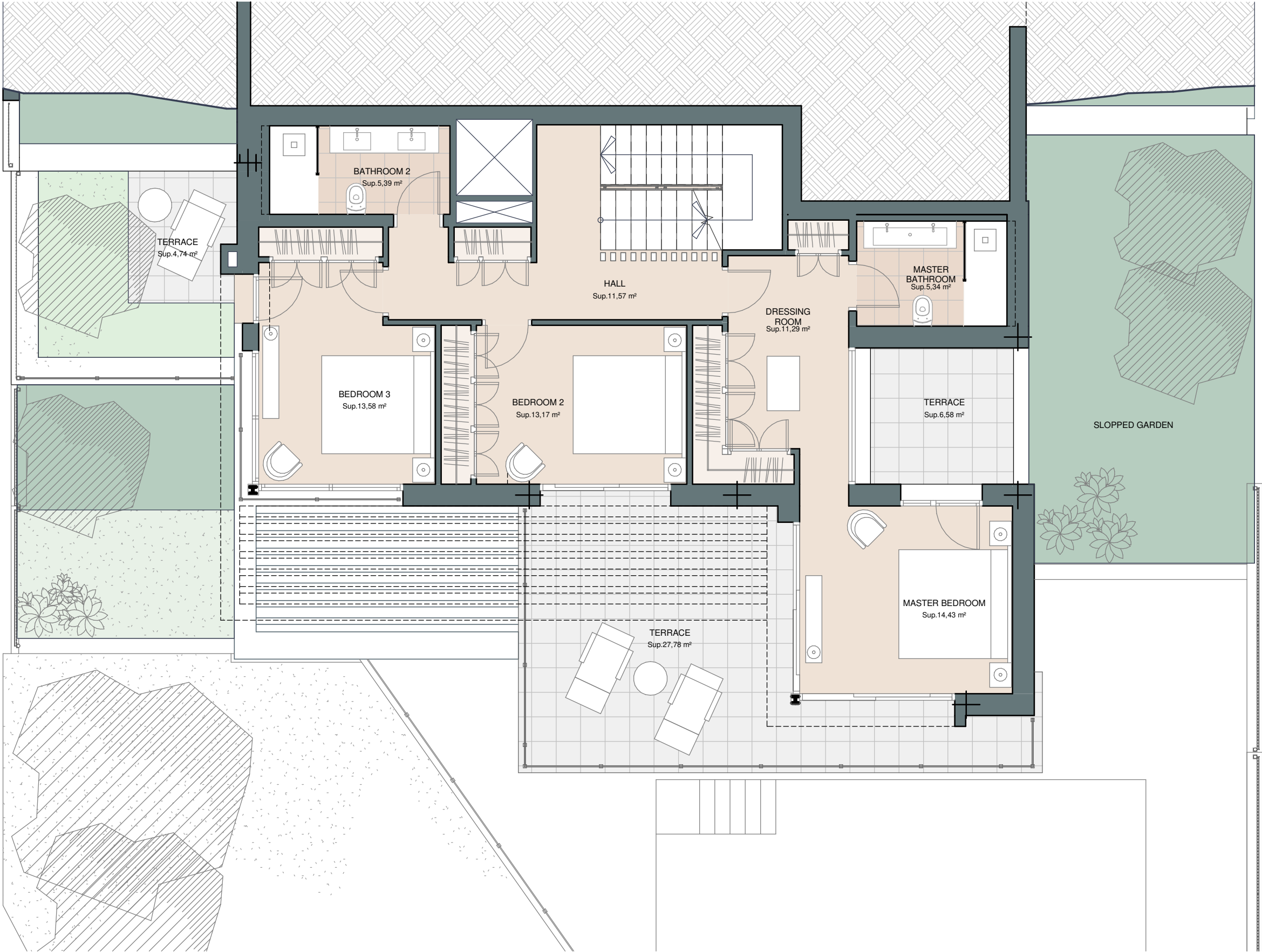

357,07 m²


3



This document is for information only. The areas and measurements are approximate and may be modified for technical reasons and/or administrative issues. The room areas marked on the drawing are usable space.


PINARES DE SAN ANTÓN | VILLA 8 | Level +1





Villa 8


Built closed area	357,07 m²
Covered terrace	27,03 m²
Open terrace	100,07 m²
Total terrace	127,10 m²
Pool	45,57 m²

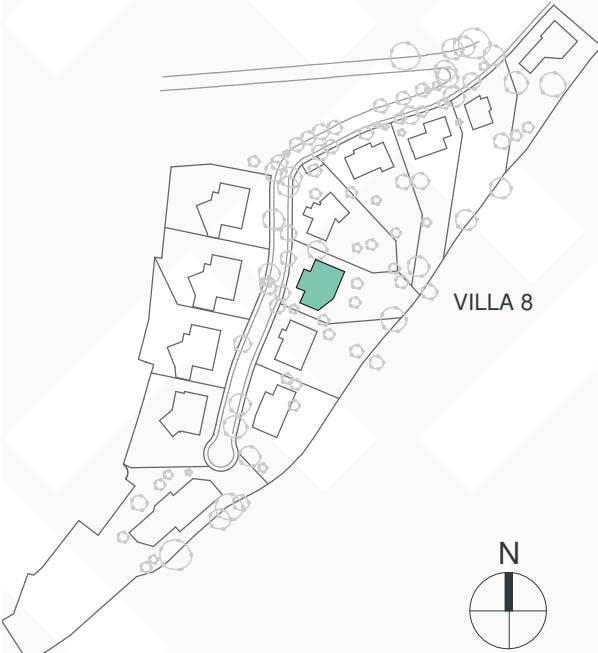
Total built area	529,74 m²
Plot area	915,87 m²


5


4

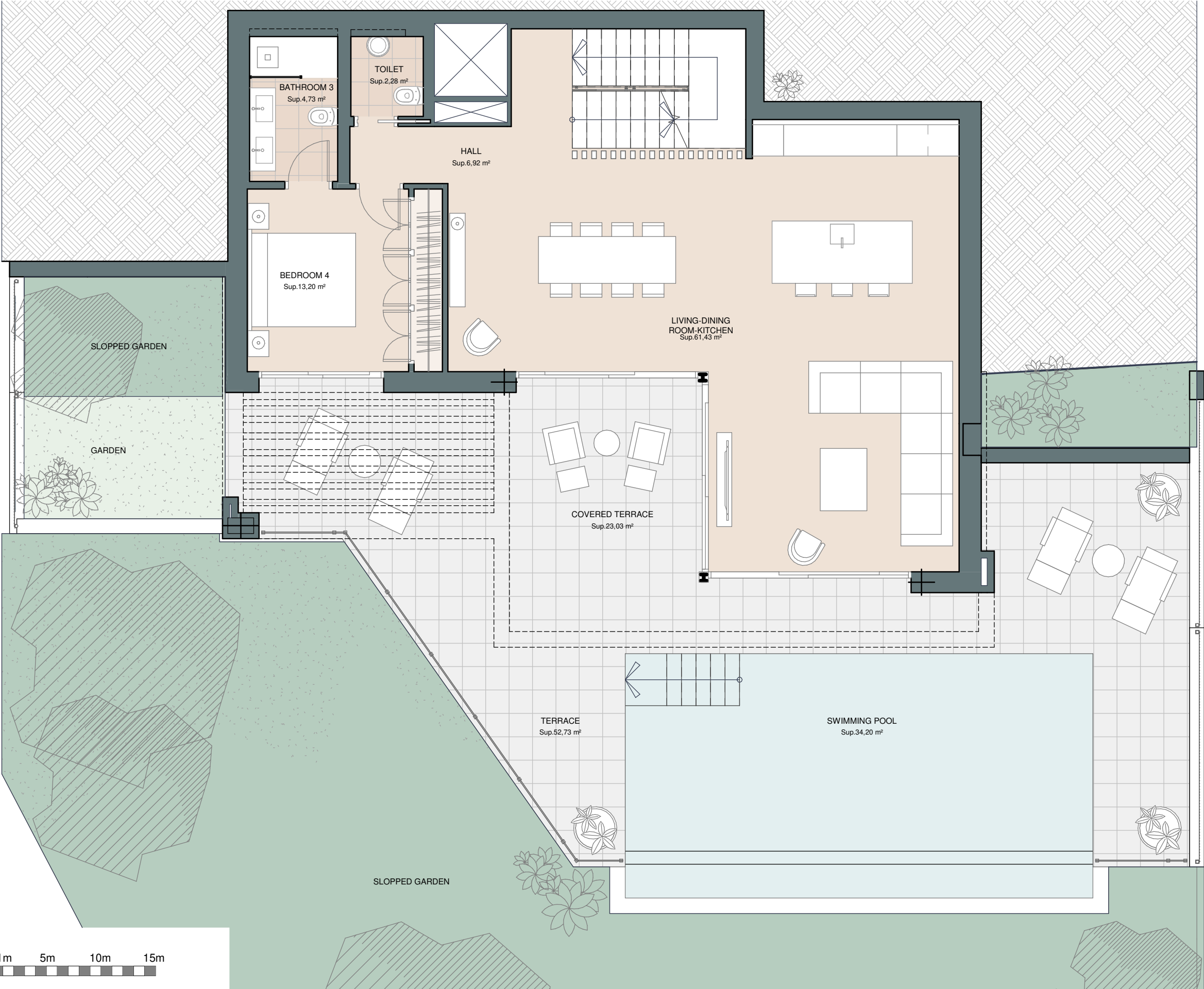

357,07 m²


3



This document is for information only. The areas and measurements are approximate and may be modified for technical reasons and/or administrative issues. The room areas marked on the drawing are usable space.


PINARES DE SAN ANTÓN | VILLA 8 | Ground Floor





Villa 8


Built closed area	357,07 m²
Covered terrace	27,03 m²
Open terrace	100,07 m²
Total terrace	127,10 m²
Pool	45,57 m²

Total built area	529,74 m²
Plot area	915,87 m²


5


4

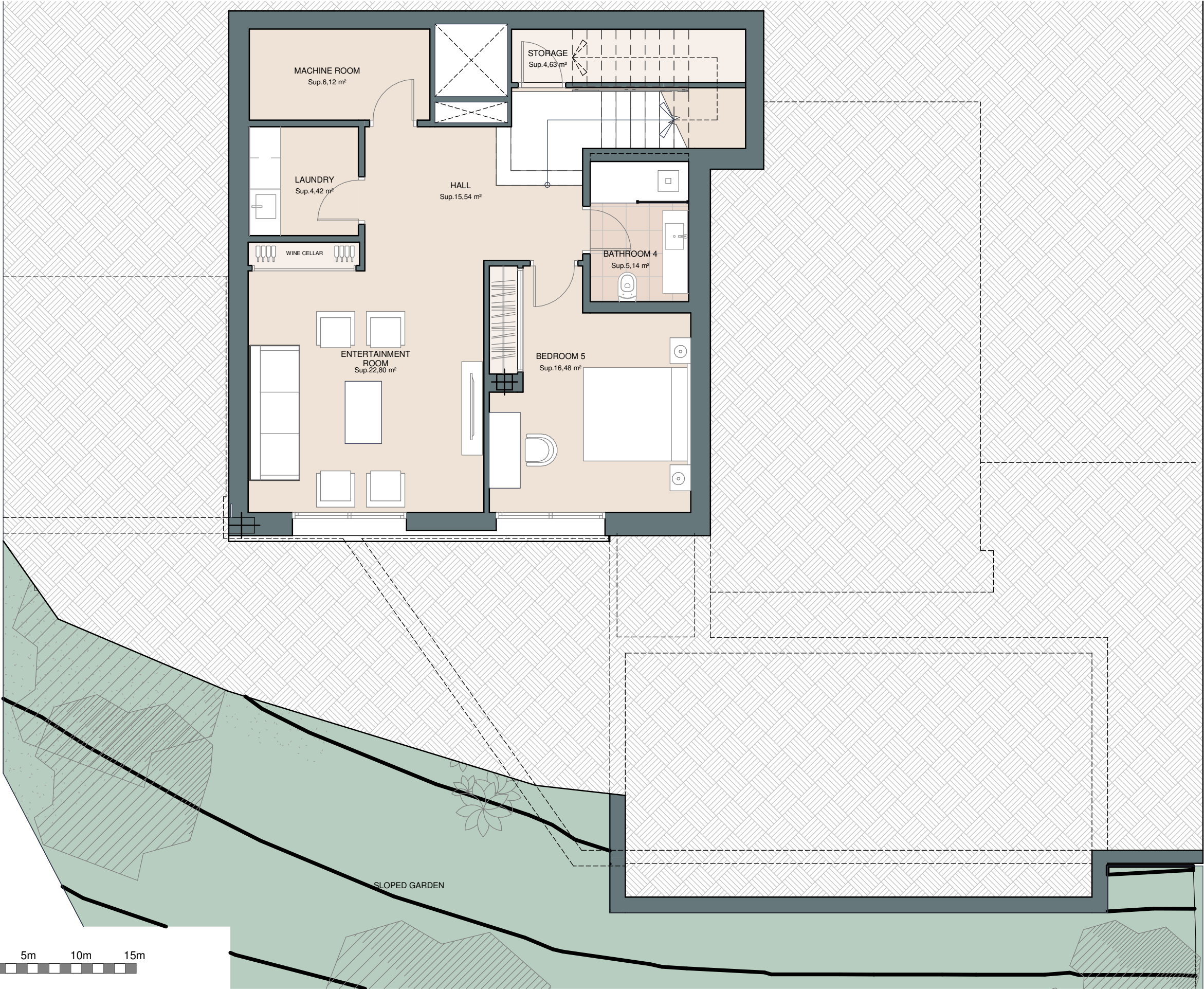

357,07 m²


3



This document is for information only. The areas and measurements are approximate and may be modified for technical reasons and/or administrative issues. The room areas marked on the drawing are usable space.


PINARES DE SAN ANTÓN | VILLA 8 | Level -1





Villa 8


Built closed area	357,07 m²
Covered terrace	27,03 m²
Open terrace	100,07 m²
Total terrace	127,10 m²
Pool	45,57 m²

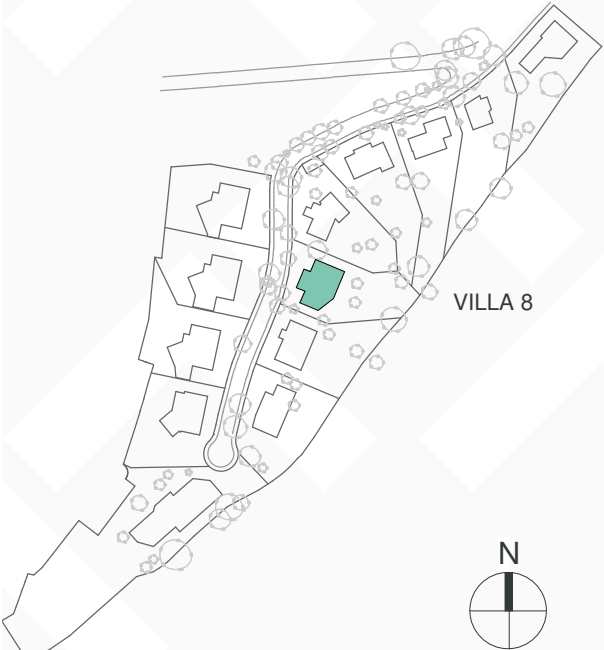
Total built area	529,74 m²
Plot area	915,87 m²


5


4


357,07 m²


3



This document is for information only. The areas and measurements are approximate and may be modified for technical reasons and/or administrative issues. The room areas marked on the drawing are usable space.









