







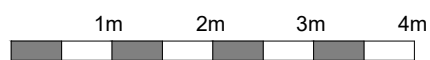
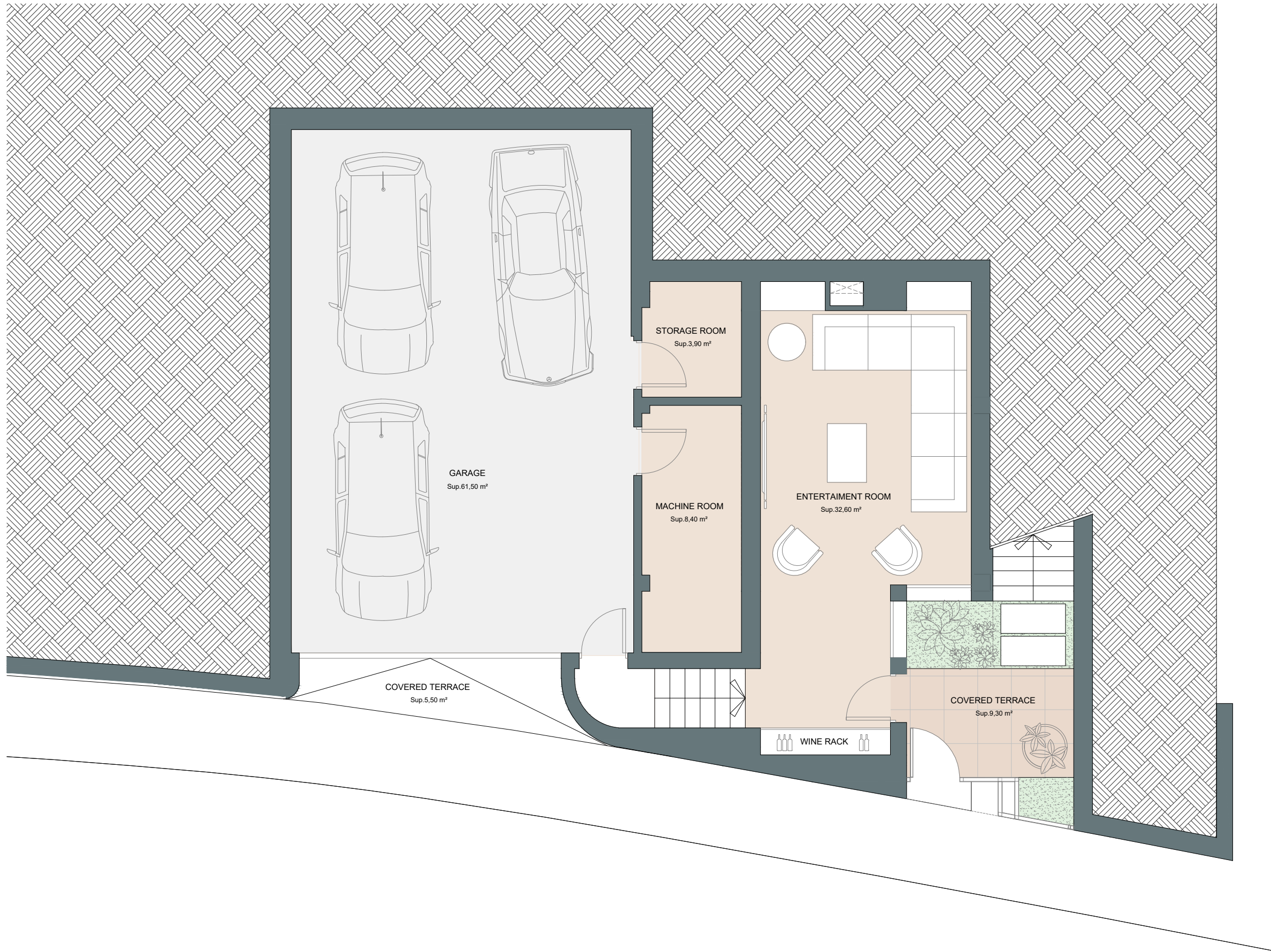
COGITARI HOMES

Villa 3

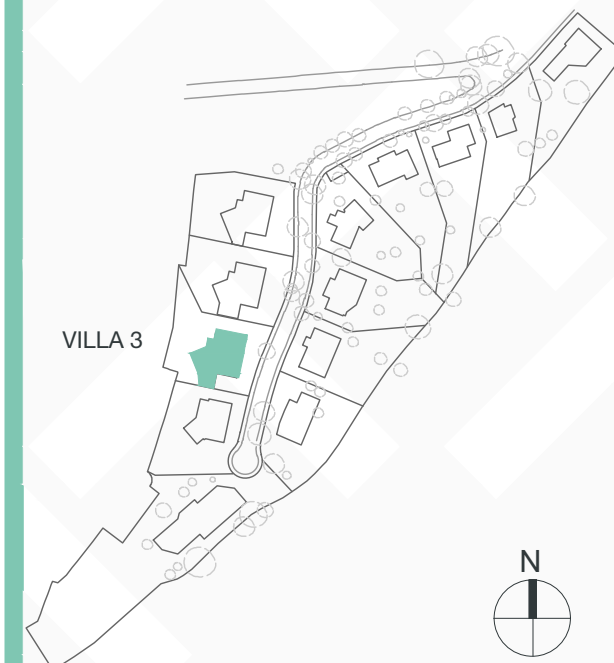
Built closed area	348,30 m ²
Covered terrace	33,45 m ²
Open terrace	195,50 m ²
Total terrace	228,95 m ²
Pool	34,00 m ²

Total built area 611,25 m²

 4
  3
  348,30 m²
 3



This document is for information only. The areas and measurements are approximate and may be modified for technical reasons and/or administrative issues. The room areas marked on the drawing are usable space.









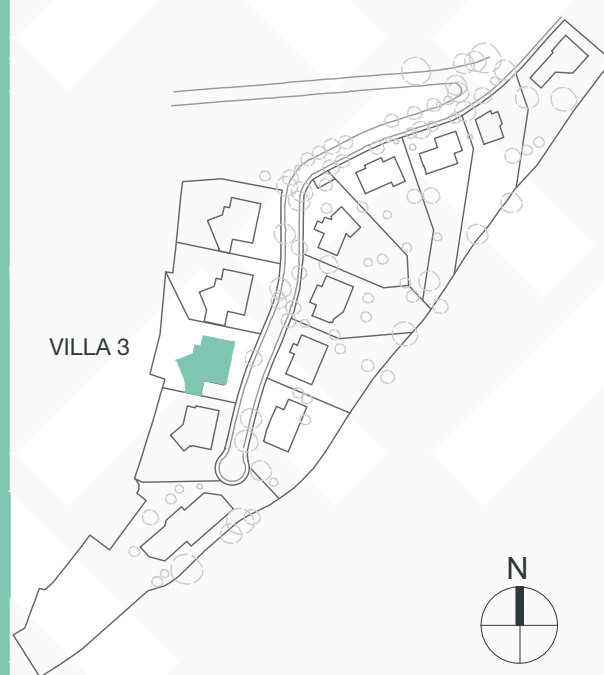
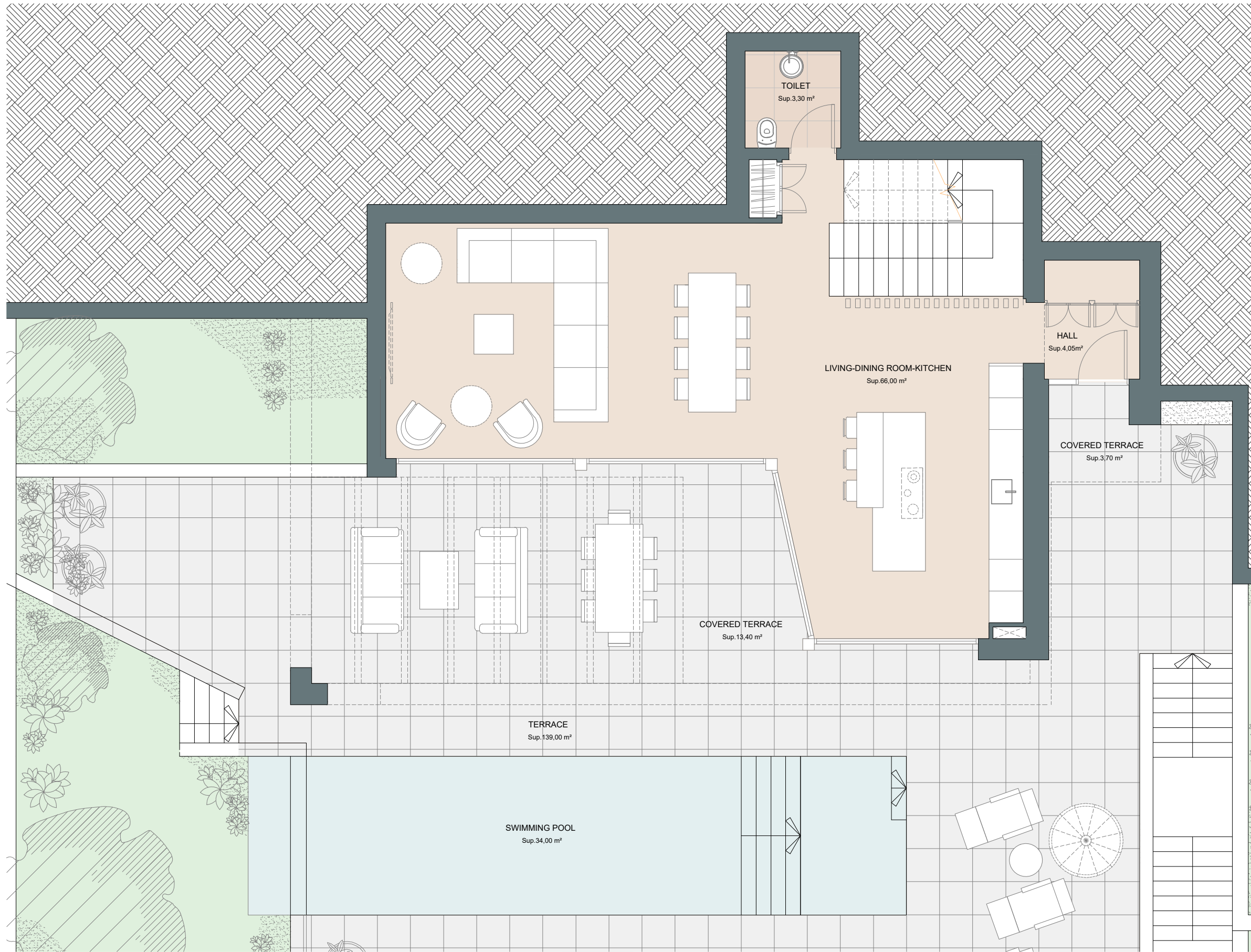
COGITARI HOMES

Villa 3

Built closed area	348,30 m ²
Covered terrace	33,45 m ²
Open terrace	195,50 m ²
Total terrace	228,95 m ²
Pool	34,00 m ²

Total built area 611,25 m²

 4
  3
  348,30 m²
 3









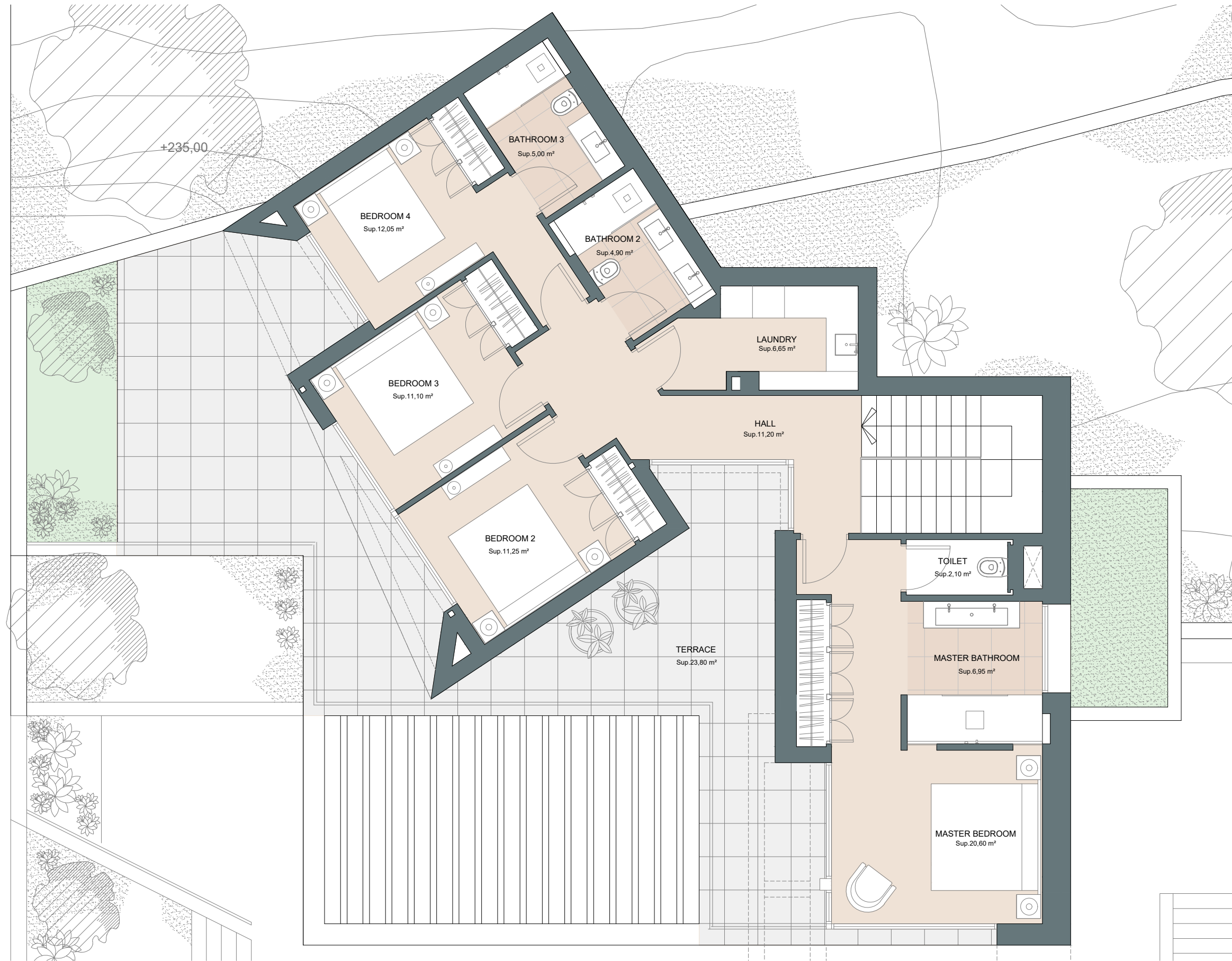
COGITARI HOMES

Villa 3

Built closed area	348,30 m ²
Covered terrace	33,45 m ²
Open terrace	195,50 m ²
Total terrace	228,95 m ²
Pool	34,00 m ²

Total built area 611,25 m²

 4
  3
  348,30 m²
 3



+235,00

BEDROOM 4
Sup. 12,05 m²

BATHROOM 3
Sup. 5,00 m²

BATHROOM 2
Sup. 4,90 m²

BEDROOM 3
Sup. 11,10 m²

LAUNDRY
Sup. 6,65 m²

HALL
Sup. 11,20 m²

BEDROOM 2
Sup. 11,25 m²

TOILET
Sup. 2,10 m²

TERRACE
Sup. 23,80 m²

MASTER BATHROOM
Sup. 6,95 m²

MASTER BEDROOM
Sup. 20,60 m²

1m 2m 3m 4m

