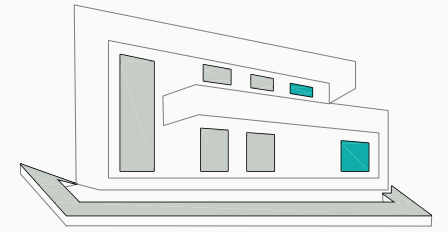


1m 5m 10m  
SCALE 1:300

This document is for information only. The areas and measurements are approximate and may be modified for technical reasons and/or administrative issues. The room areas marked on the drawing are usable space.



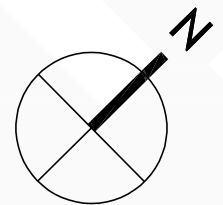
COGITARI HOMES

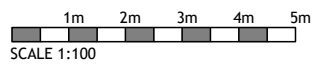
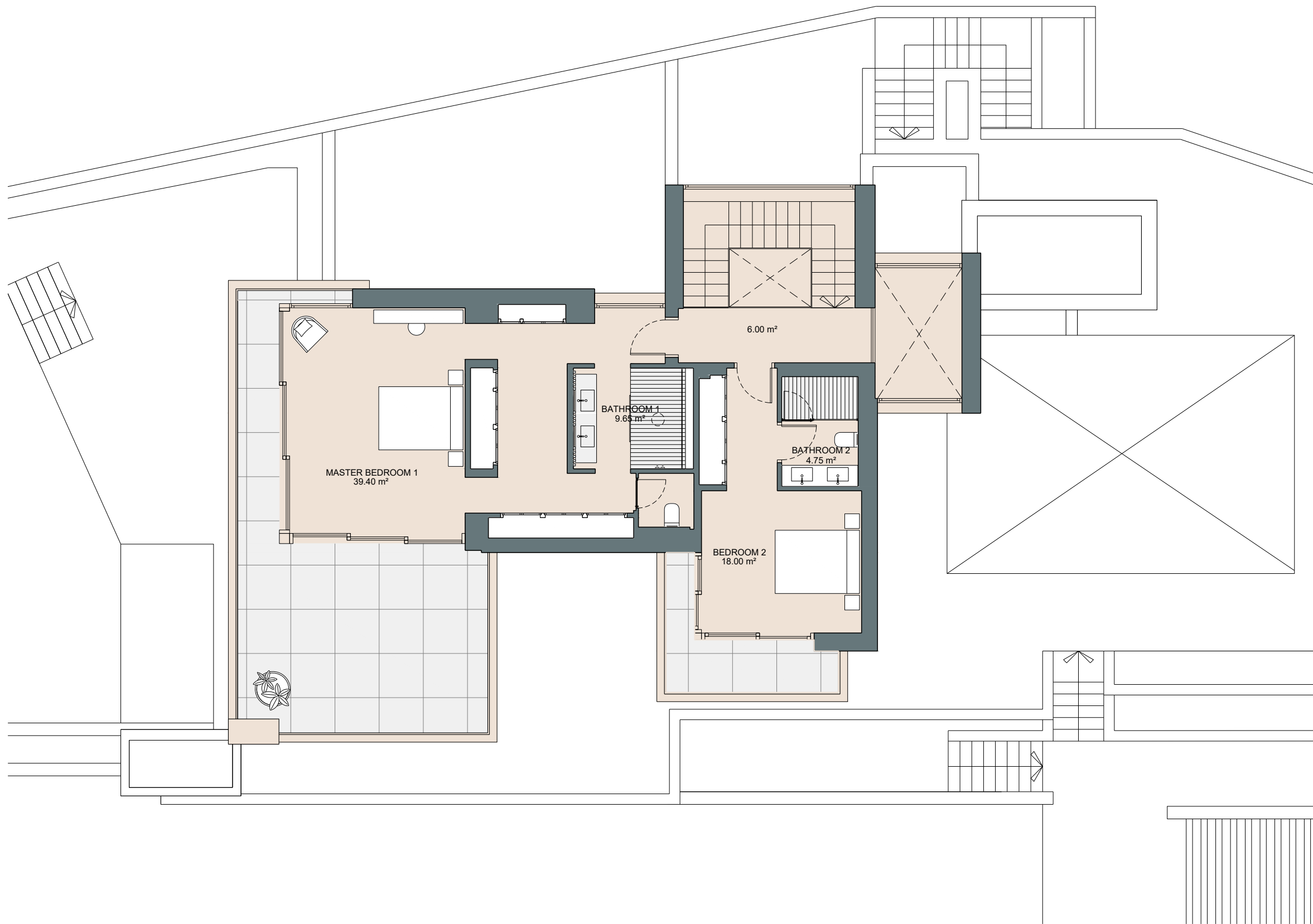
VILLA C. LA QUINTA

Built closed area	520,35 m <sup>2</sup>
Covered terrace	55,15 m <sup>2</sup>
Open terrace	352,60 m <sup>2</sup>
Open terrace pergola	20,00 m <sup>2</sup>
Total terrace	427,75 m <sup>2</sup>
Pool	51,50 m <sup>2</sup>
<b>Total built area</b>	<b>1.019,60 m<sup>2</sup></b>

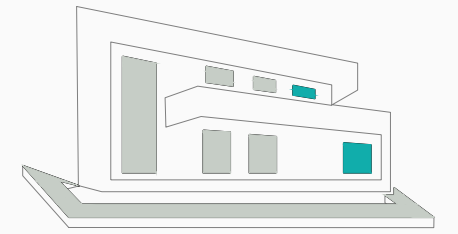


5 5 1.019,60 m<sup>2</sup> 2





This document is for information only. The areas and measurements are approximate and may be modified for technical reasons and/or administrative issues. The room areas marked on the drawing are usable space.



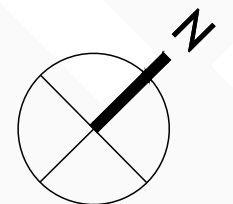
**COGITARI HOMES**

VILLA C. LA QUINTA

Built closed area	520,35 m <sup>2</sup>
Covered terrace	55,15 m <sup>2</sup>
Open terrace	352,60 m <sup>2</sup>
Open terrace pergola	20,00 m <sup>2</sup>
Total terrace	427,75 m <sup>2</sup>
Pool	51,50 m <sup>2</sup>
<b>Total built area</b>	<b>1.019,60 m<sup>2</sup></b>

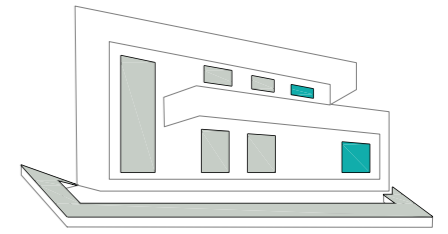
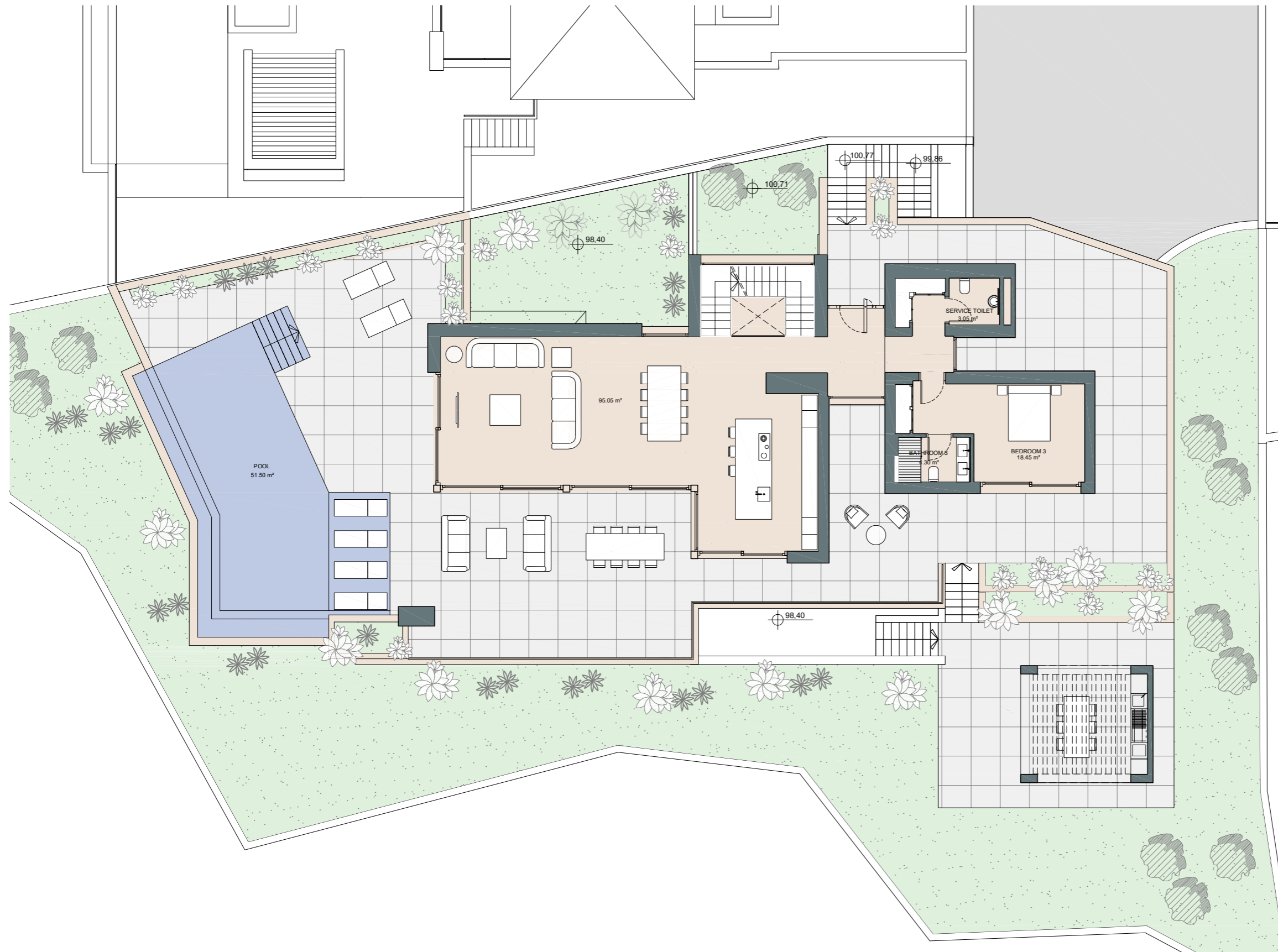


5 5 1.019,60 m<sup>2</sup> 2



# GATE 3

## Ground floor



### COGITARI HOMES

#### VILLA C. LA QUINTA

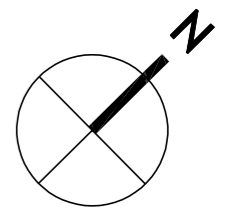
Built closed area	520,35 m <sup>2</sup>
Covered terrace	55,15 m <sup>2</sup>
Open terrace	352,60 m <sup>2</sup>
Open terrace pergola	20,00 m <sup>2</sup>
Total terrace	427,75 m <sup>2</sup>
Pool	51,50 m <sup>2</sup>
Total built area	1.019,60 m <sup>2</sup>

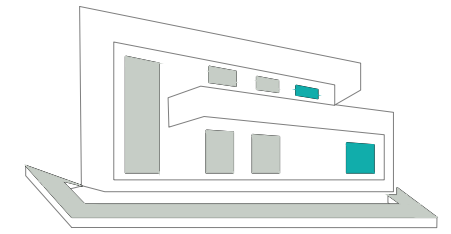
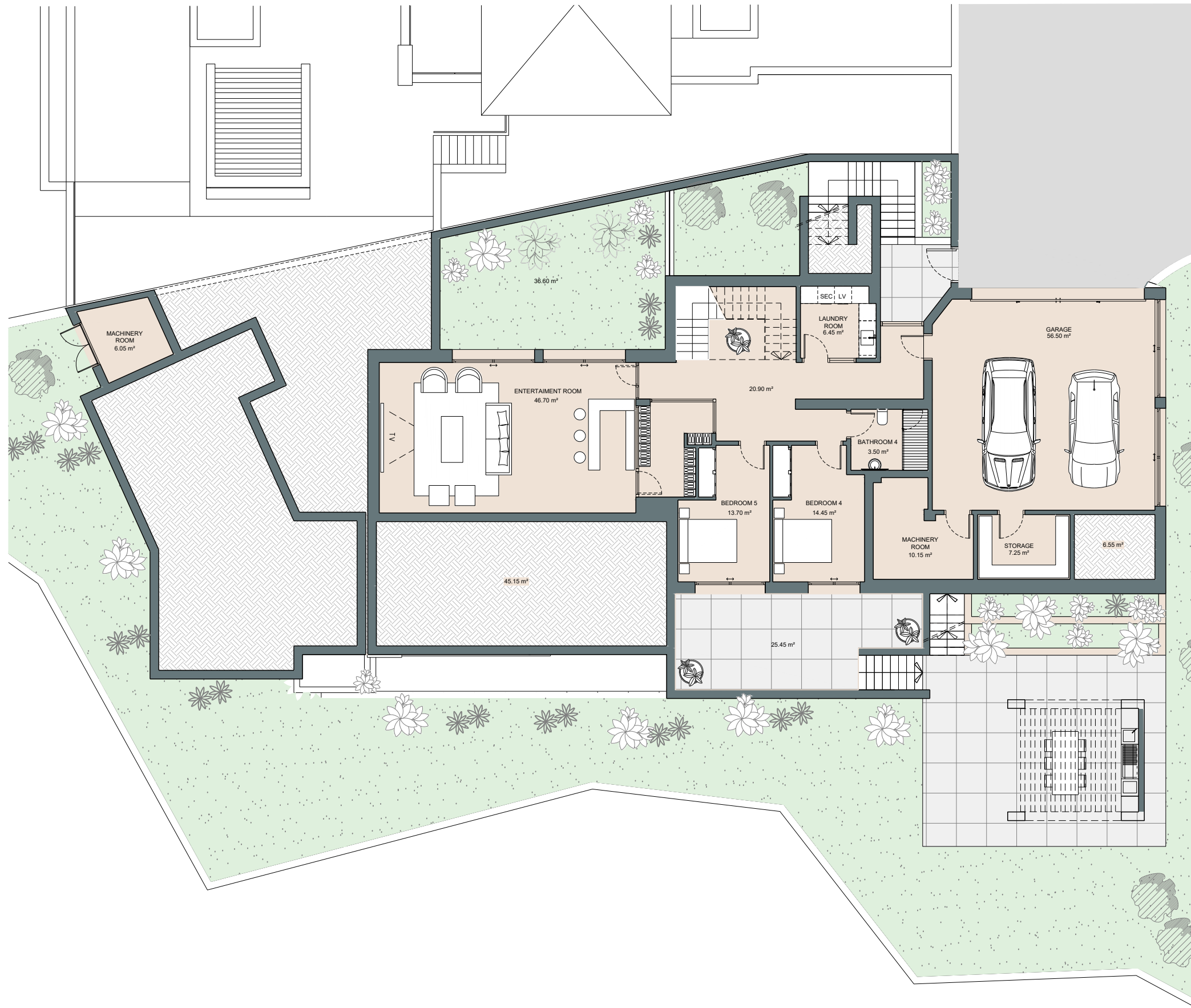


5 5 1.019,60 m<sup>2</sup> 2

1m 2m 3m 4m 5m  
SCALE 1:150

This document is for information only. The areas and measurements are approximate and may be modified for technical reasons and/or administrative issues. The room areas marked on the drawing are usable space.





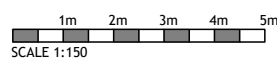
COGITARI HOMES

VILLA C. LA QUINTA

Built closed area	520,35 m <sup>2</sup>
Covered terrace	55,15 m <sup>2</sup>
Open terrace	352,60 m <sup>2</sup>
Open terrace pergola	20,00 m <sup>2</sup>
Total terrace	427,75 m <sup>2</sup>
Pool	51,50 m <sup>2</sup>
<b>Total built area</b>	<b>1.019,60 m<sup>2</sup></b>



5 5 1.019,60 m<sup>2</sup> 2



This document is for information only. The areas and measurements are approximate and may be modified for technical reasons and/or administrative issues. The room areas marked on the drawing are usable space.

