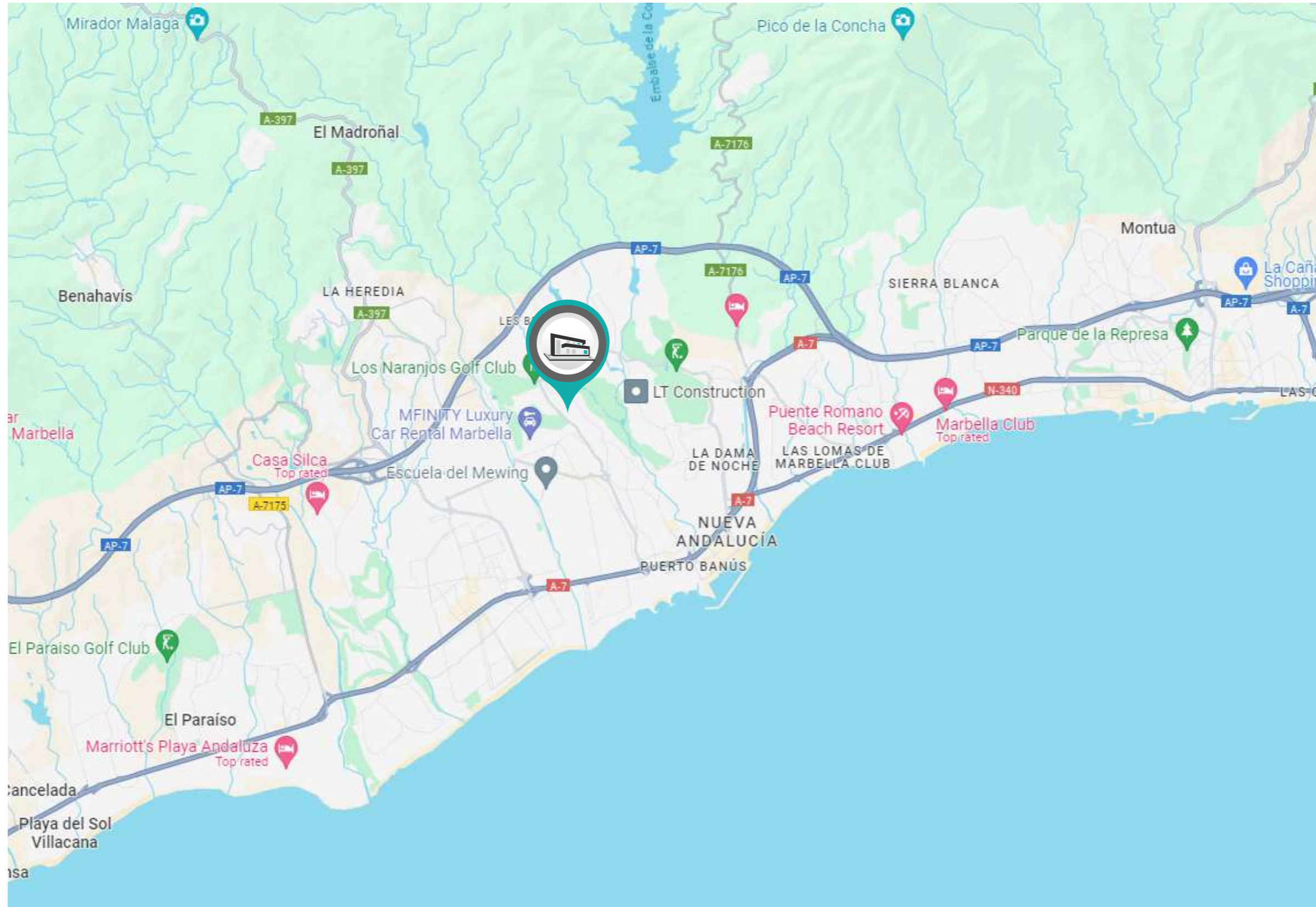
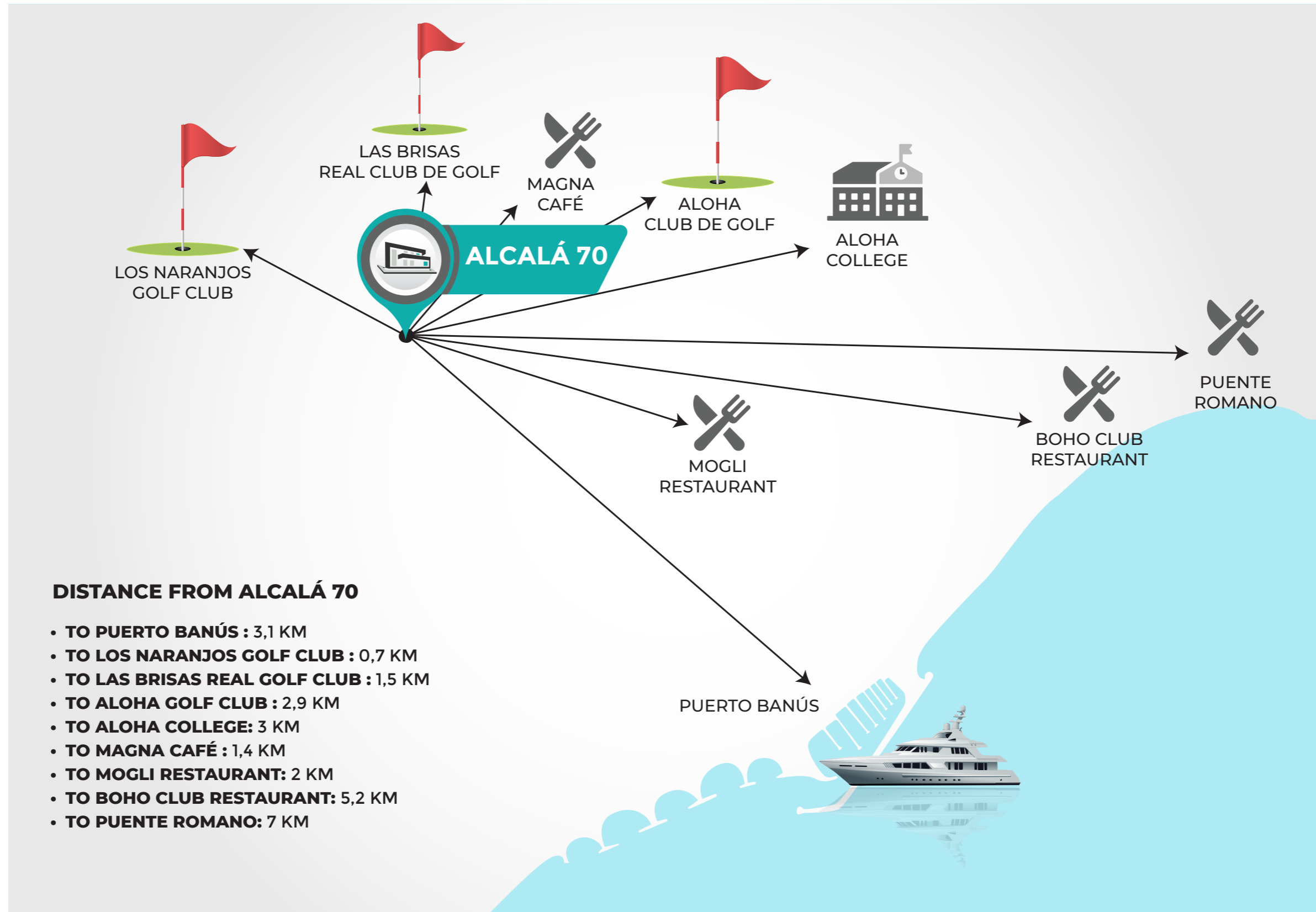


VILLA ALCALÁ 70 | Nueva Andalucía



VILLA ALCALÁ 70 | Nueva Andalucía





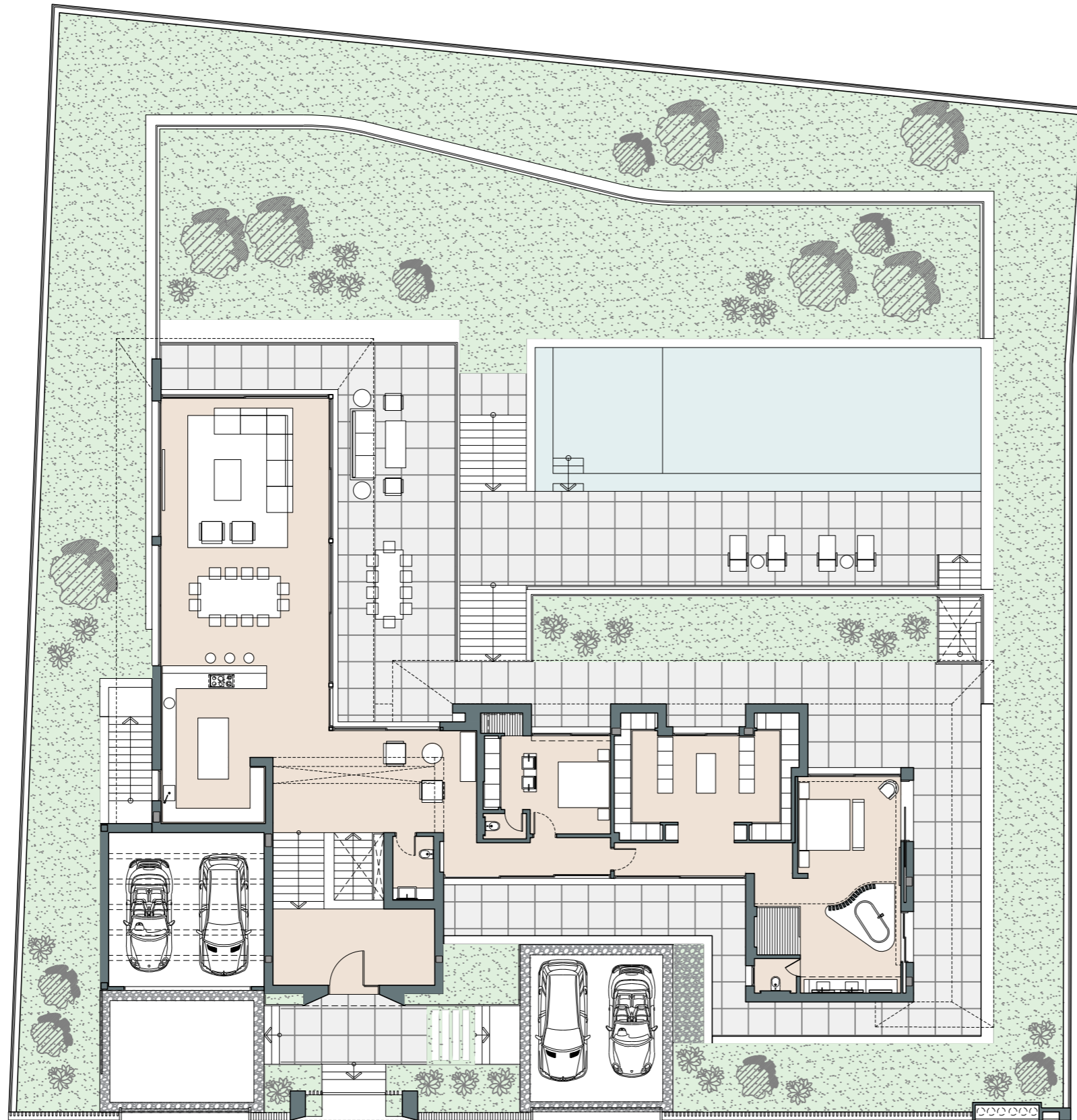
DISTANCE FROM ALCALÁ 70

- TO PUERTO BANÚS : 3,1 KM
- TO LOS NARANJOS GOLF CLUB : 0,7 KM
- TO LAS BRISAS REAL GOLF CLUB : 1,5 KM
- TO ALOHA GOLF CLUB : 2,9 KM
- TO ALOHA COLLEGE: 3 KM
- TO MAGNA CAFÉ : 1,4 KM
- TO MOGLI RESTAURANT: 2 KM
- TO BOHO CLUB RESTAURANT: 5,2 KM
- TO PUENTE ROMANO: 7 KM

VILLA ALCALÁ 70 | Nueva Andalucía | Site plan



COGITARI HOMES



Villa Alcalá 70

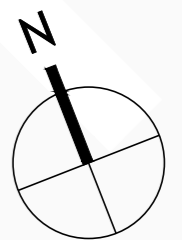
Built closed area	982,92 m ²
Covered terrace	142,50 m ²
Open terrace	288,27 m ²
Open terrace pergola	98,10 m ²
Total terrace	528,87 m ²
Parking pergola	40,71 m ²
Pool	98,93 m ²
Total built area	1.651,43 m ²



5 5 1.651,43 m² 4



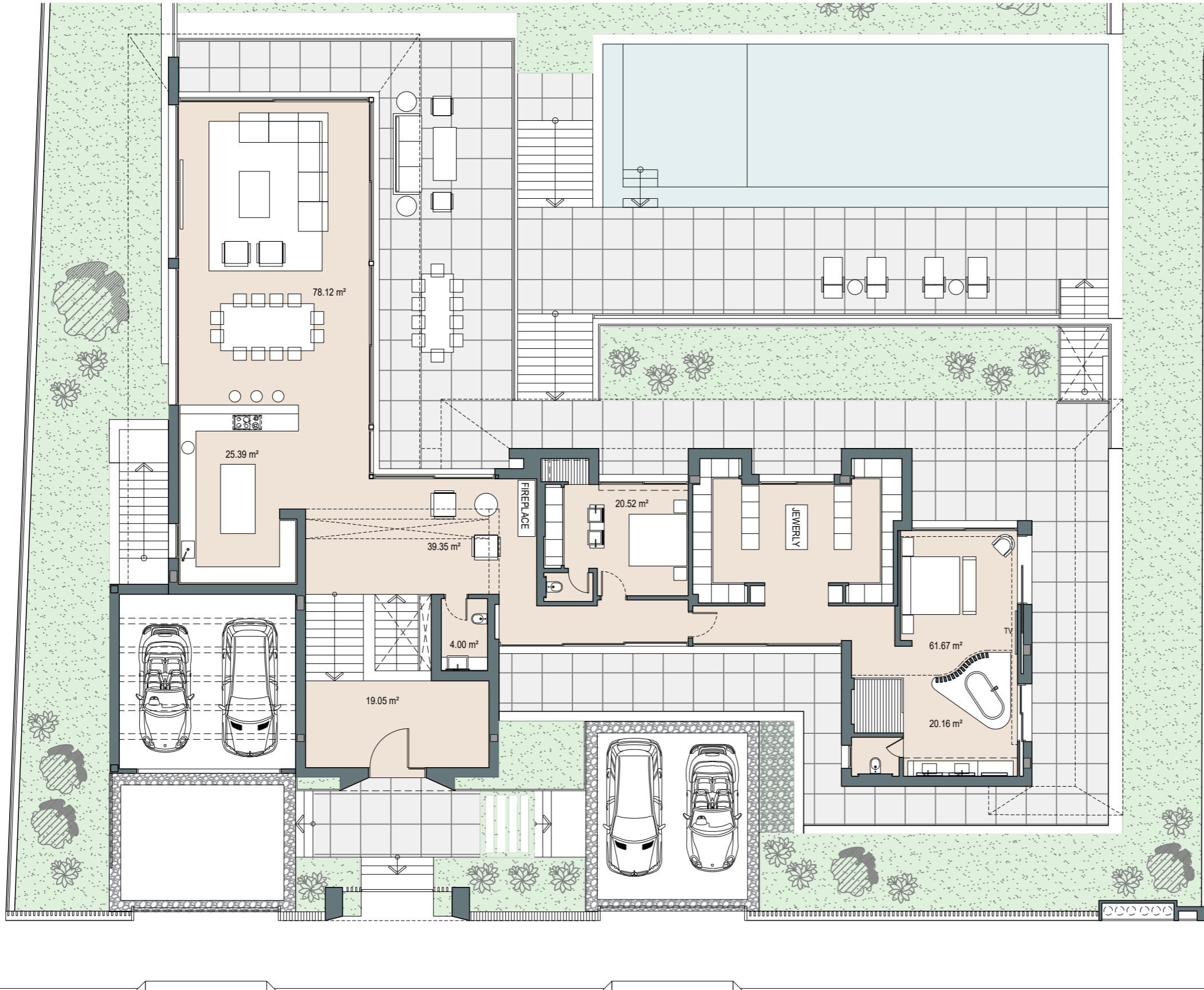
This document is for information only. The areas and measurements are approximate and may be modified for technical reasons and/or administrative issues. The room areas marked on the drawing are usable space.



VILLA ALCALÁ 70 | Nueva Andalucía | Ground level



COGITARI HOMES

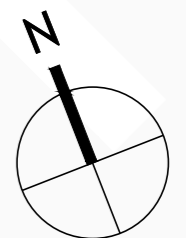


Villa Alcalá 70

Built closed area	982,92 m ²
Covered terrace	142,50 m ²
Open terrace	288,27 m ²
Open terrace pergola	98,10 m ²
Total terrace	528,87 m ²
Parking pergola	40,71 m ²
Pool	98,93 m ²
Total built area	1.651,43 m²



5 5 1.651,43 m² 4



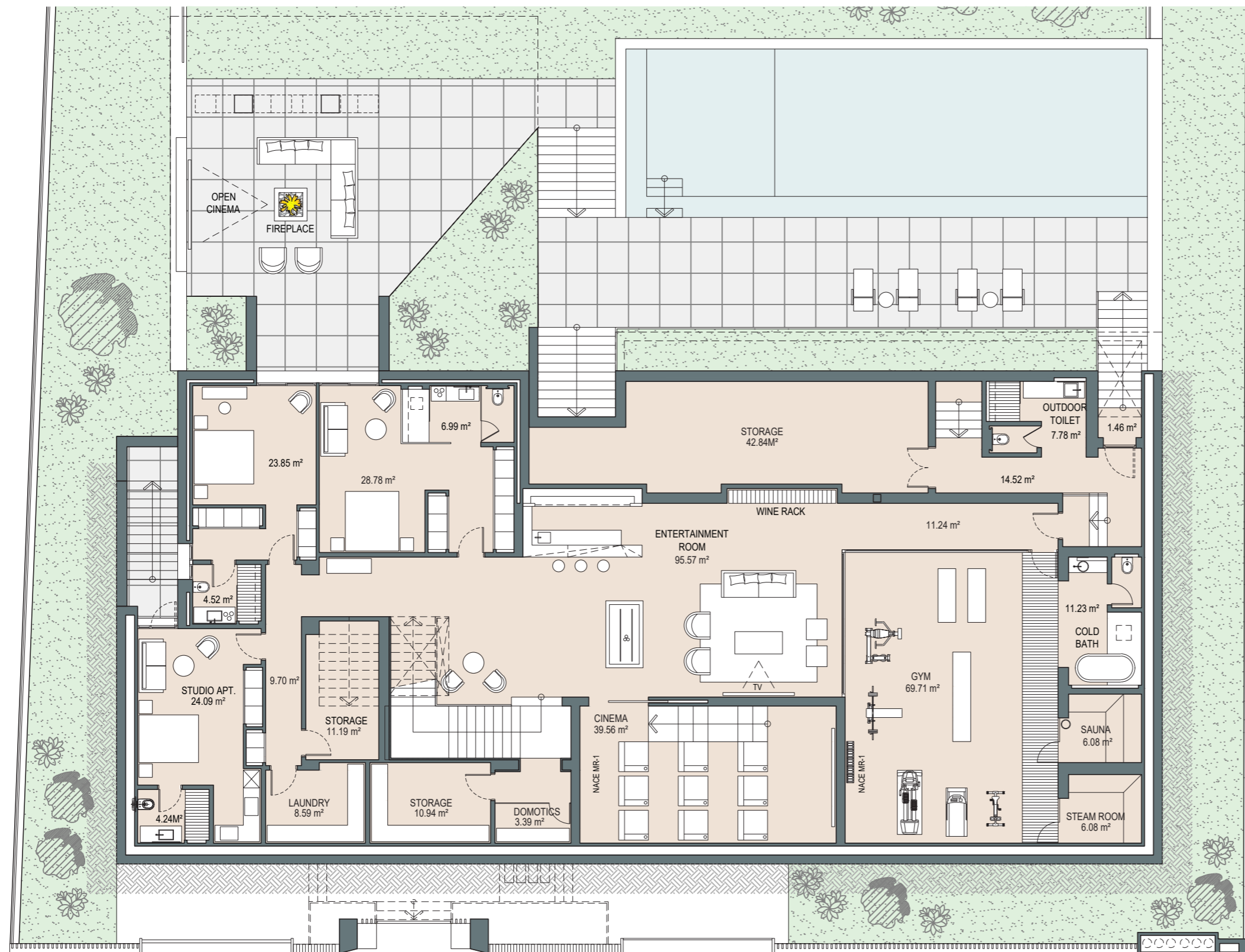
1m 2m 3m 4m 5m
SCALE 1:150

This document is for information only. The areas and measurements are approximate and may be modified for technical reasons and/or administrative issues. The room areas marked on the drawing are usable space.

VILLA ALCALÁ 70 | Nueva Andalucía | Entertainment level



COGITARI HOMES



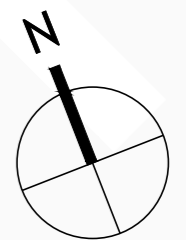
Villa Alcalá 70

Built closed area	982,92 m ²
Covered terrace	142,50 m ²
Open terrace	288,27 m ²
Open terrace pergola	98,10 m ²
Total terrace	528,87 m ²
Parking pergola	40,71 m ²
Pool	98,93 m ²
Total built area	1.651,43 m²



5 5 1.651,43 m² 4

1m 2m 3m 4m 5m
SCALE 1:150

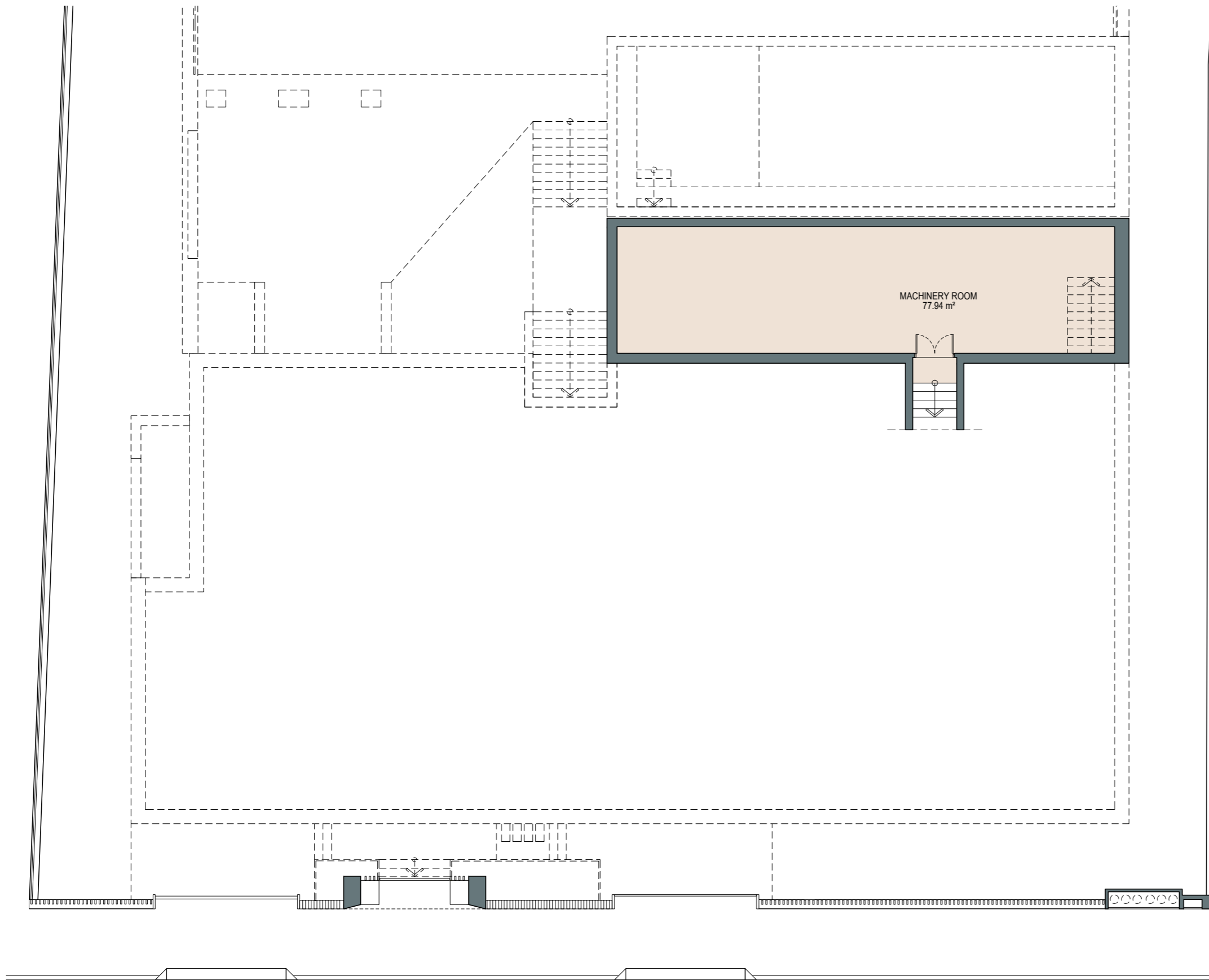


This document is for information only. The areas and measurements are approximate and may be modified for technical reasons and/or administrative issues. The room areas marked on the drawing are usable space.

VILLA ALCALÁ 70 | Nueva Andalucía | Basement



COGITARI HOMES

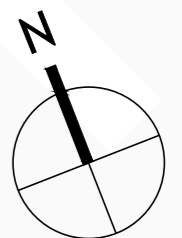


Villa Alcalá 70

Built closed area	982,92 m ²
Covered terrace	142,50 m ²
Open terrace	288,27 m ²
Open terrace pergola	98,10 m ²
Total terrace	528,87 m ²
Parking pergola	40,71 m ²
Pool	98,93 m ²
Total built area	1.651,43 m ²



5 5 1.651,43 m² 4



1m 2m 3m 4m 5m
SCALE 1:150

This document is for information only. The areas and measurements are approximate and may be modified for technical reasons and/or administrative issues. The room areas marked on the drawing are usable space.

VILLA ALCALÁ 70 | Nueva Andalucía



COGITARI HOMES



VILLA ALCALÁ 70 | Nueva Andalucía



VILLA ALCALÁ 70 | Nueva Andalucía



COGITARI HOMES

