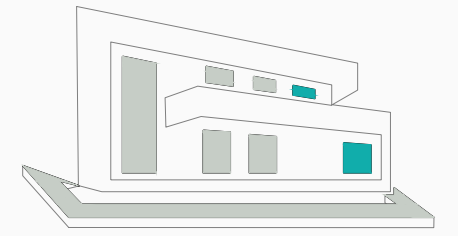


1m 5m 10m  
SCALE 1:300

This document is for information only. The areas and measurements are approximate and may be modified for technical reasons and/or administrative issues. The room areas marked on the drawing are usable space.



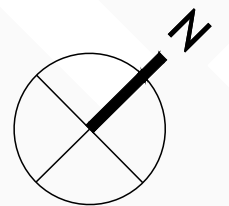
COGITARI HOMES

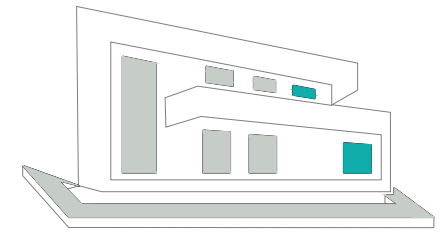
VILLA A. LA QUINTA

Built closed area	586,45 m <sup>2</sup>
Covered terrace	42,20 m <sup>2</sup>
Open terrace	303,90 m <sup>2</sup>
Open terrace pergola	16,95 m <sup>2</sup>
Total terrace	363,05 m <sup>2</sup>
Pool	87,30 m <sup>2</sup>
Total built area	1.036,80 m <sup>2</sup>



5 6 1.036,80 m<sup>2</sup> 3





COGITARI HOMES

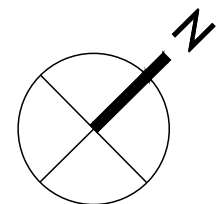
VILLA A. LA QUINTA

Built closed area	640,50 m <sup>2</sup>
Covered terrace	42,20 m <sup>2</sup>
Open terrace	303,90 m <sup>2</sup>
Open terrace pergola	16,95 m <sup>2</sup>
Total terrace	363,05 m <sup>2</sup>
Pool	87,30 m <sup>2</sup>
<b>Total built area</b>	<b>1.090,85 m<sup>2</sup></b>

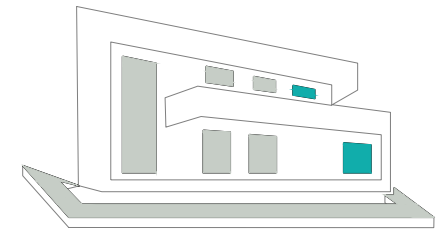
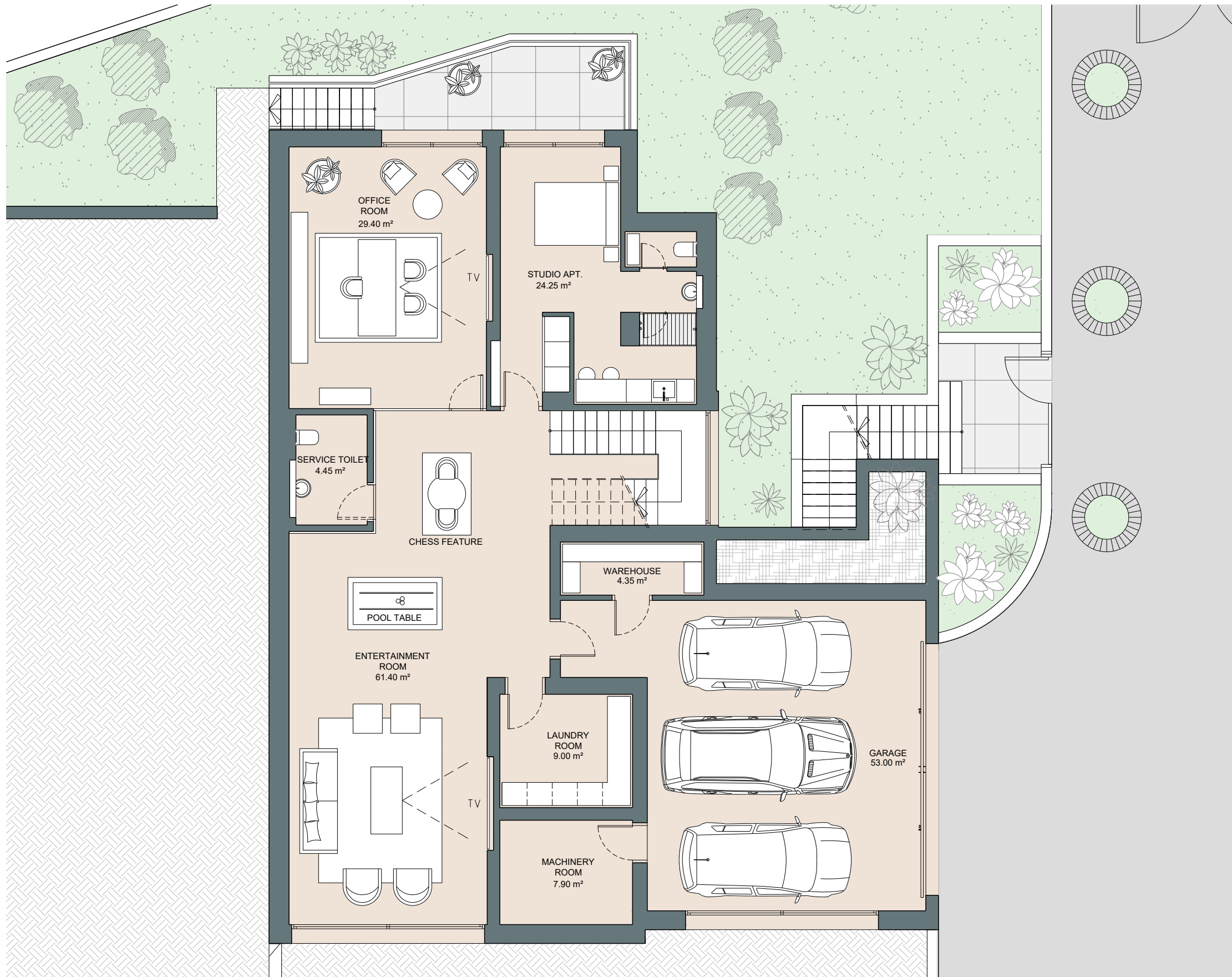


5 6 1.036,80 m<sup>2</sup> 3

- BUILT CLOSED AREA (Entertainment level)
- BUILT CLOSED AREA (Ground floor+First floor)
- COVERED TERRACE
- OPEN TERRACE PERGOLA
- OPEN TERRACE
- POOL



1m 2m 3m 4m 5m  
SCALE 1:150



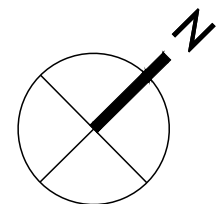
COGITARI HOMES

VILLA A. LA QUINTA

Built closed area	586,45 m <sup>2</sup>
Covered terrace	42,20 m <sup>2</sup>
Open terrace	303,90 m <sup>2</sup>
Open terrace pergola	16,95 m <sup>2</sup>
Total terrace	363,05 m <sup>2</sup>
Pool	87,30 m <sup>2</sup>
<b>Total built area</b>	<b>1.036,80 m<sup>2</sup></b>

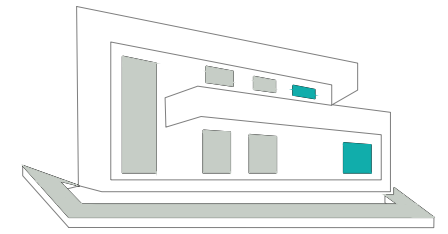
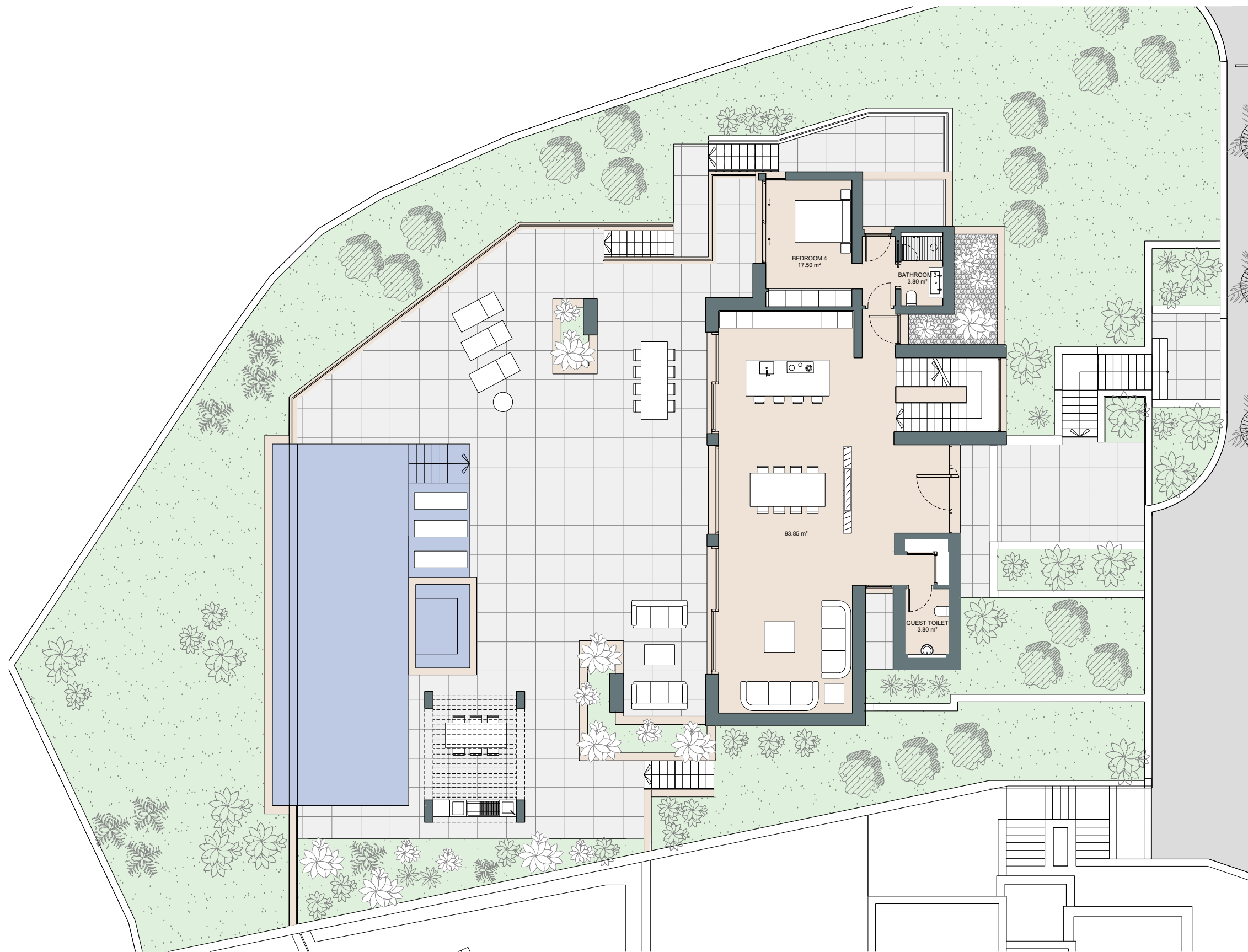


5 6 1.036,80 m<sup>2</sup> 3



1m 2m 3m 4m 5m  
SCALE 1:100

This document is for information only. The areas and measurements are approximate and may be modified for technical reasons and/or administrative issues. The room areas marked on the drawing are usable space.



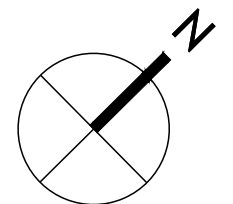
COGITARI HOMES

VILLA A. LA QUINTA

Built closed area	586,45 m <sup>2</sup>
Covered terrace	42,20 m <sup>2</sup>
Open terrace	303,90 m <sup>2</sup>
Open terrace pergola	16,95 m <sup>2</sup>
Total terrace	363,05 m <sup>2</sup>
Pool	87,30 m <sup>2</sup>
<b>Total built area</b>	<b>1.036,80 m<sup>2</sup></b>

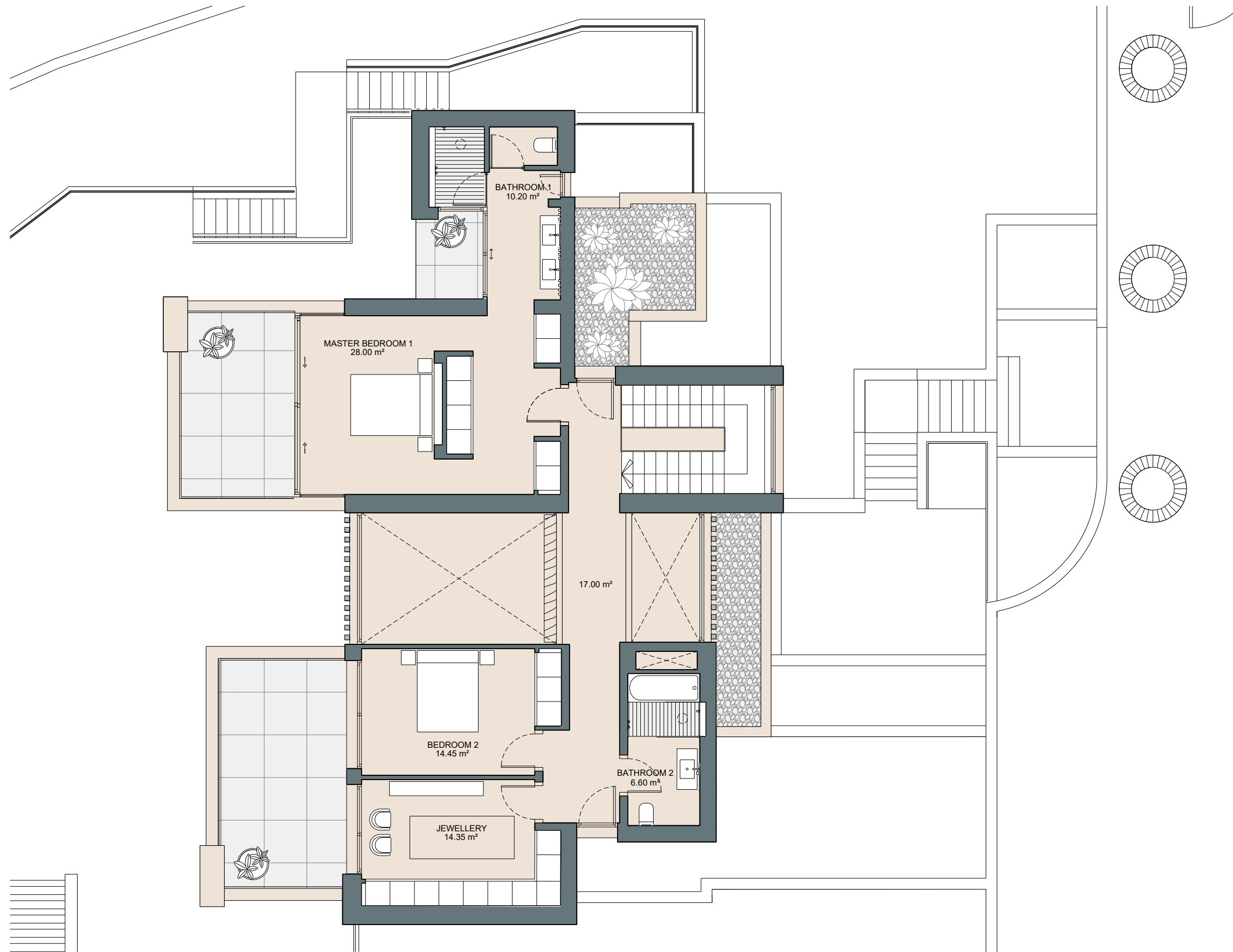


5 6 1.036,80 m<sup>2</sup> 3



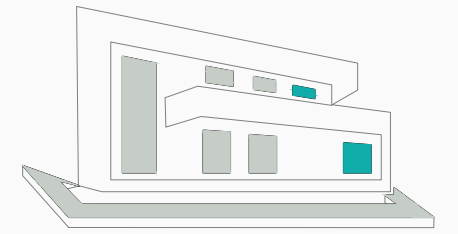
1m 2m 3m 4m 5m  
SCALE 1:150





1m 2m 3m 4m 5m  
SCALE 1:100





This document is for information only. The areas and measurements are approximate and may be modified for technical reasons and/or administrative issues. The room areas marked on the drawing are usable space.



COGITARI HOMES

VILLA A. LA QUINTA

Built closed area	586,45 m <sup>2</sup>
Covered terrace	42,20 m <sup>2</sup>
Open terrace	303,90 m <sup>2</sup>
Open terrace pergola	16,95 m <sup>2</sup>
Total terrace	363,05 m <sup>2</sup>
Pool	87,30 m <sup>2</sup>
<b>Total built area</b>	<b>1.036,80 m<sup>2</sup></b>

 5
  6
  1.036,80 m<sup>2</sup>
 3

