

# PINARES DE SAN ANTÓN | VILLA 6



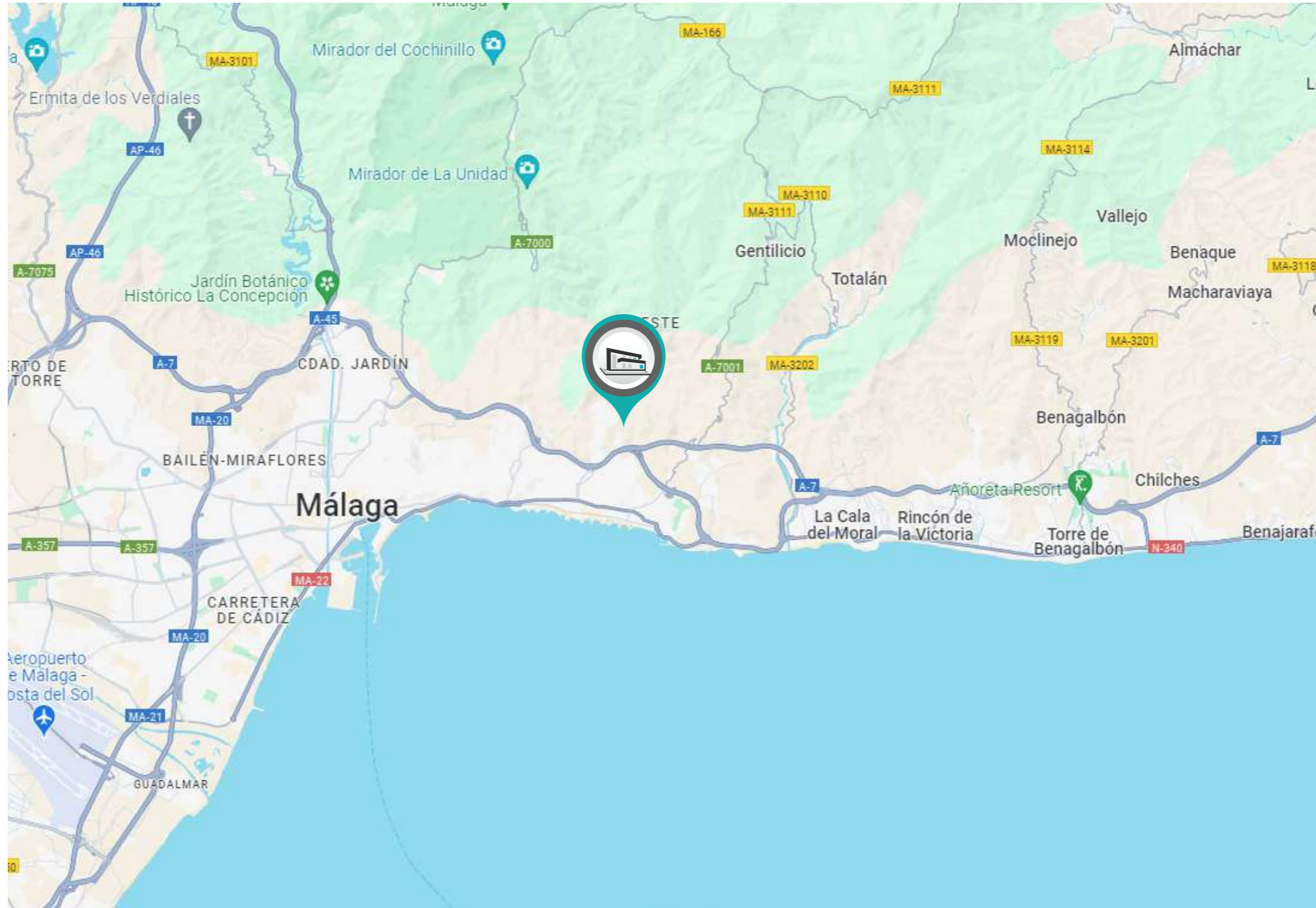
COGITARI HOMES

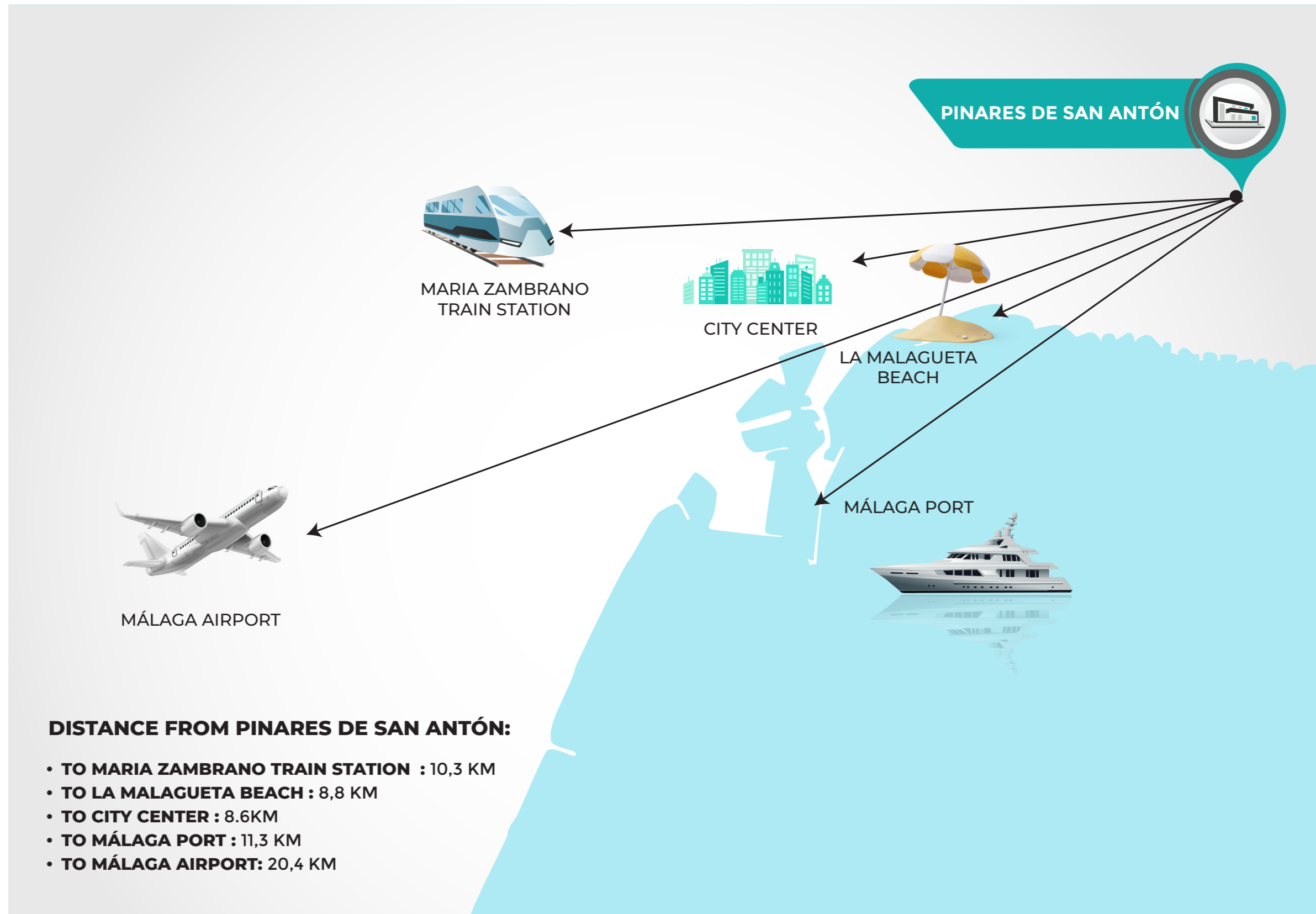


# PINARES DE SAN ANTÓN | VILLA 6



COGITARI HOMES

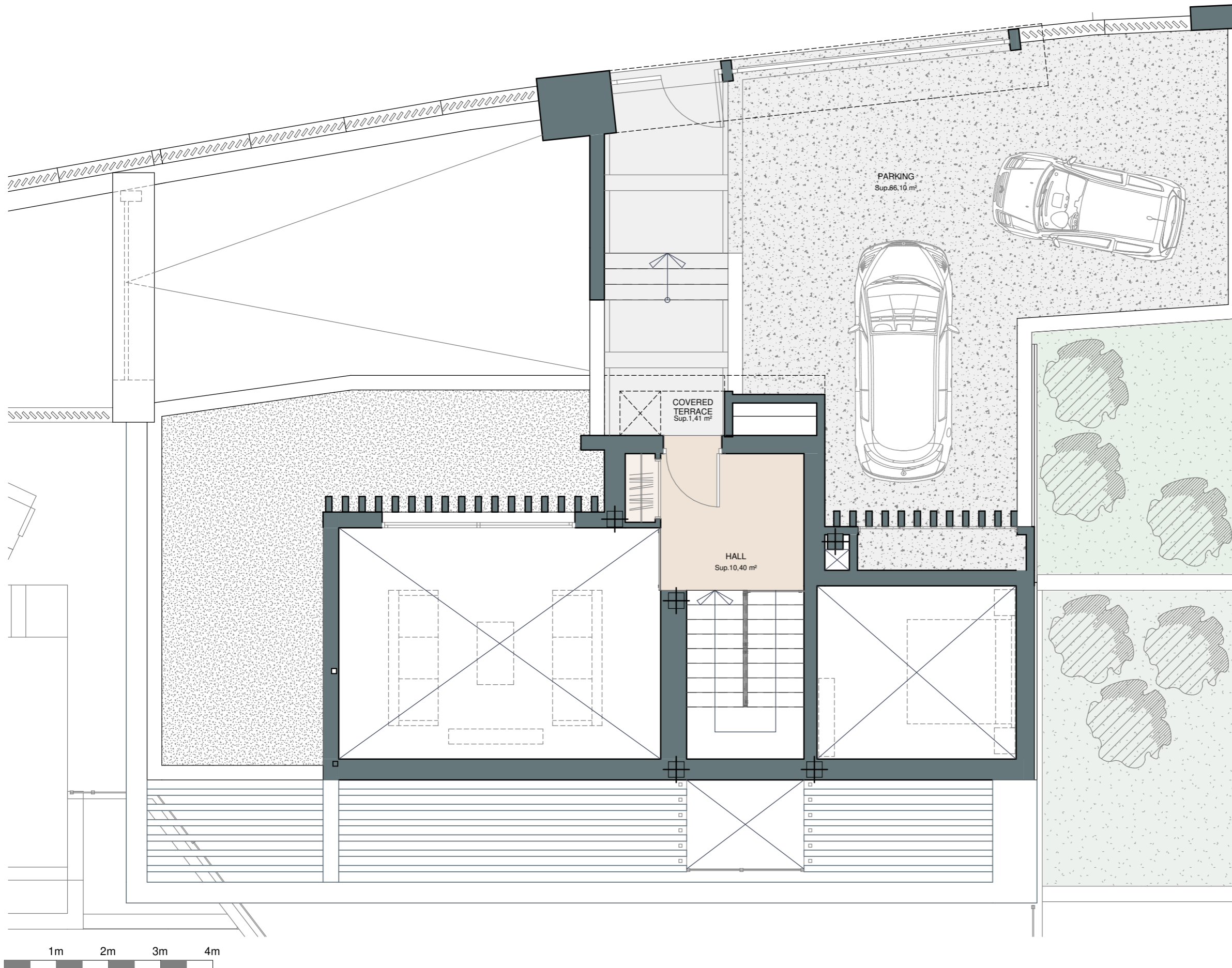




# PINARES DE SAN ANTÓN | VILLA 6 | Entrance Floor







COGITARI HOMES

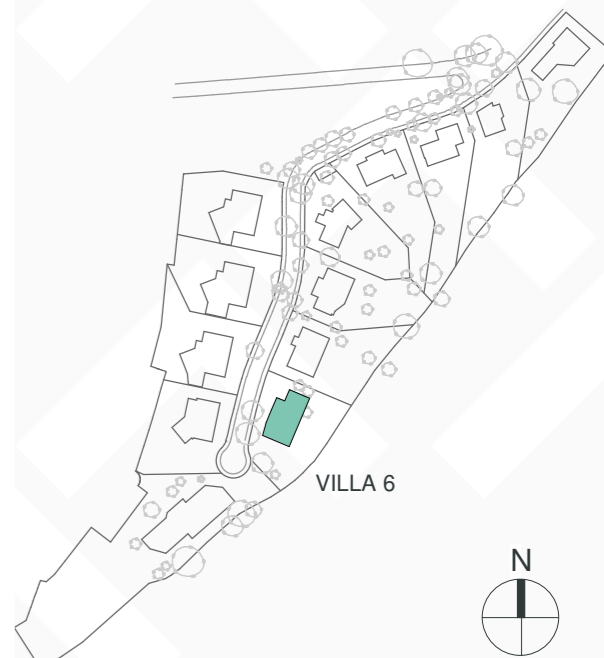


## Villa 6

Built closed area	411,84 m <sup>2</sup>
Covered terrace	38,70 m <sup>2</sup>
Open terrace	110,11 m <sup>2</sup>
Total terrace	148,81 m <sup>2</sup>
Pool	55,12 m <sup>2</sup>

**Total built area** 615,77 m<sup>2</sup>

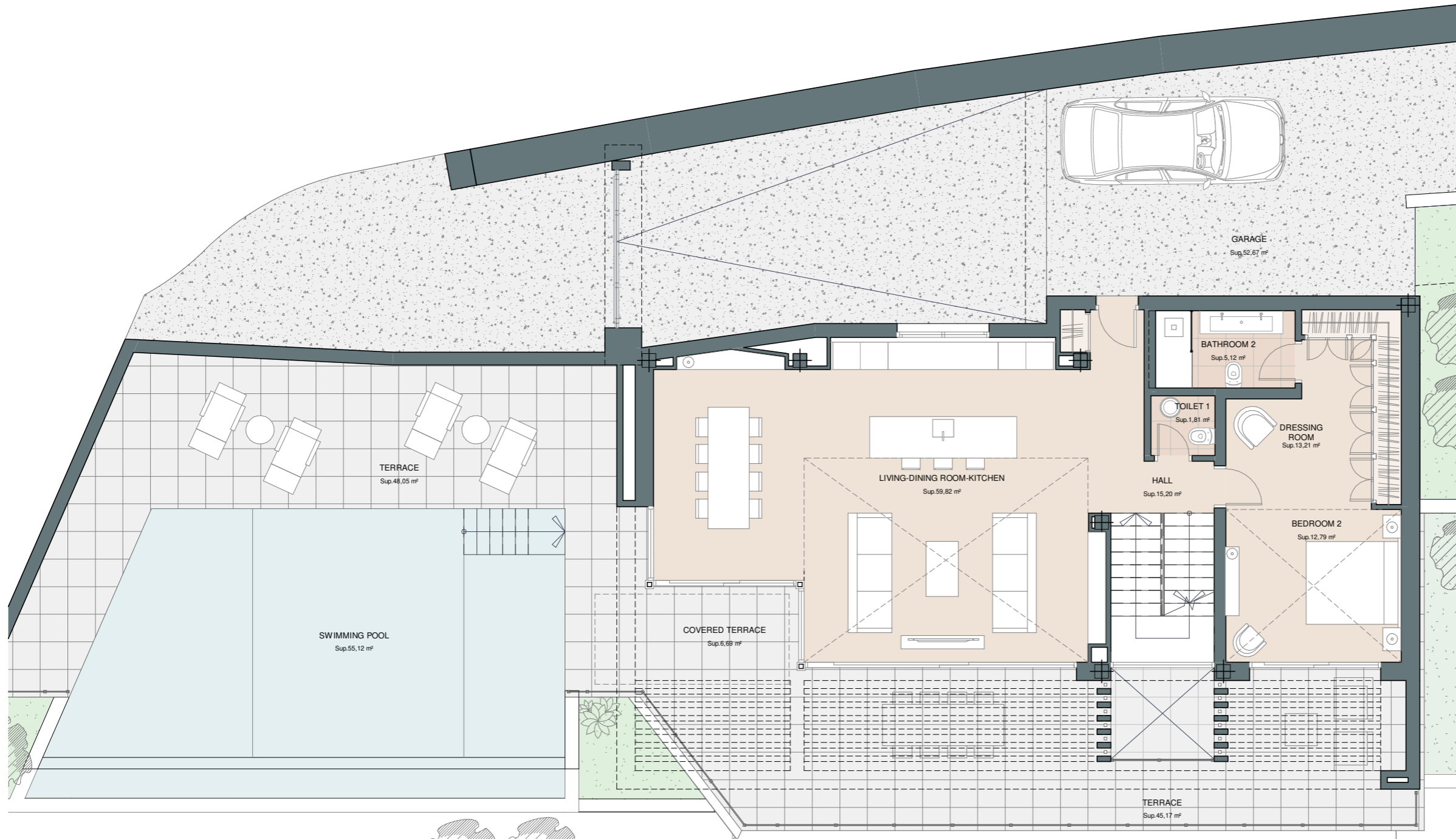
 5
  4
  411,84 m<sup>2</sup>
 4



# PINARES DE SAN ANTÓN | VILLA 6 | Level +1







COGITARI HOMES



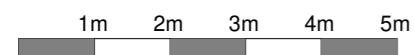
## Villa 6

Built closed area	411,84 m <sup>2</sup>
Covered terrace	38,70 m <sup>2</sup>
Open terrace	110,11 m <sup>2</sup>
Total terrace	148,81 m <sup>2</sup>
Pool	55,12 m <sup>2</sup>

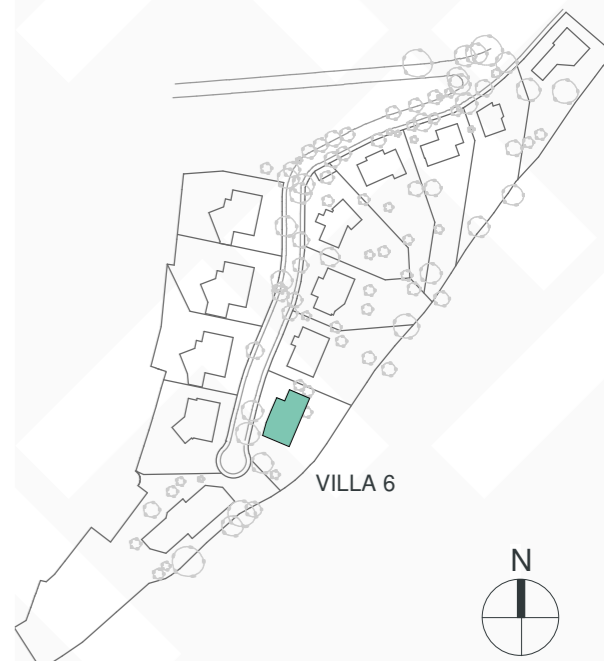
**Total built area 615,77 m<sup>2</sup>**

 5
  4
  411,84 m<sup>2</sup>
 4

Scale 1 : 100



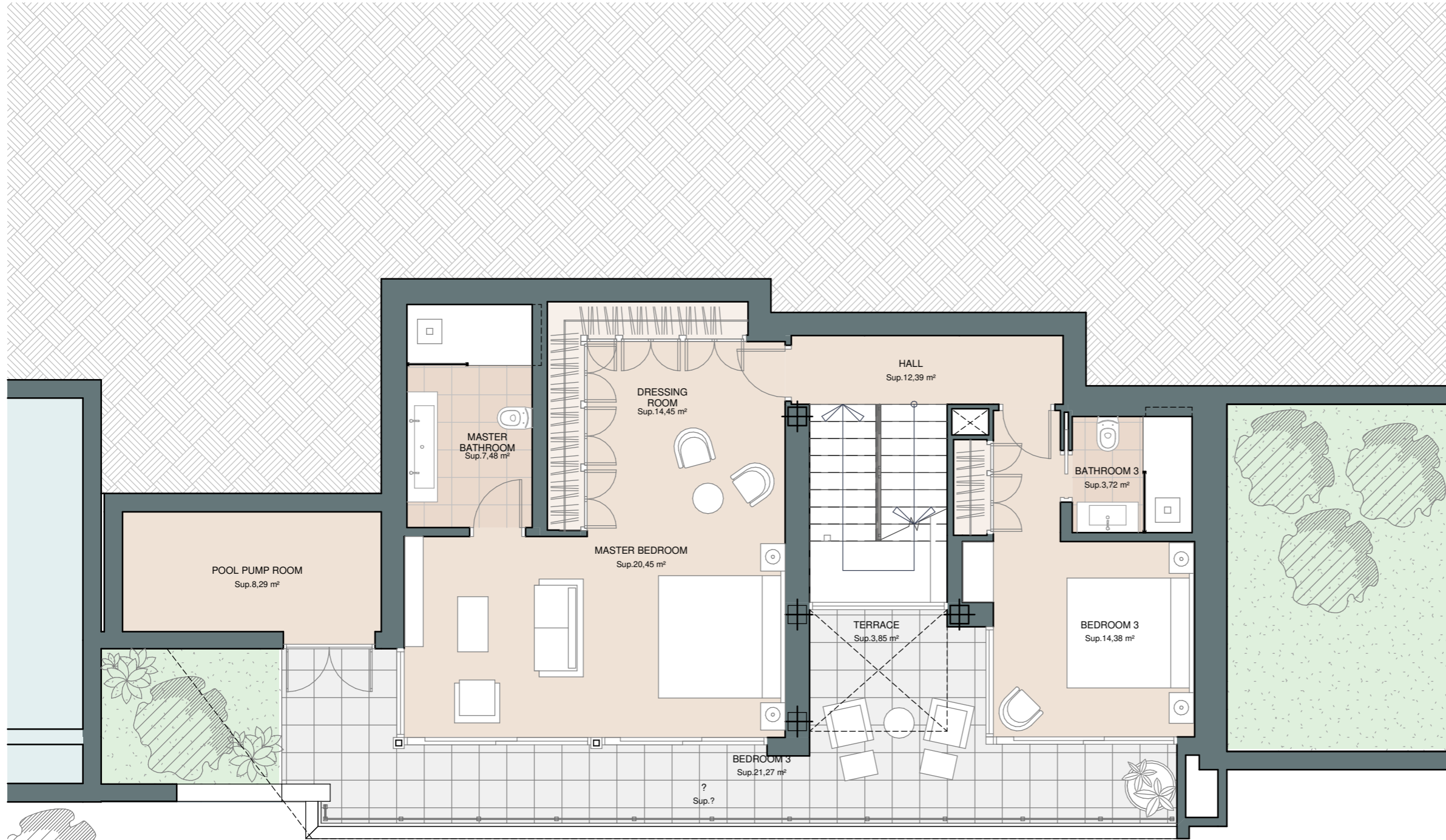
This document is for information only. The areas and measurements are approximate and may be modified for technical reasons and/or administrative issues. The room areas marked on the drawing are usable space.



# PINARES DE SAN ANTÓN | VILLA 6 | Ground Floor



COGITARI HOMES

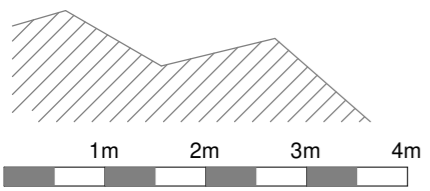


## Villa 6

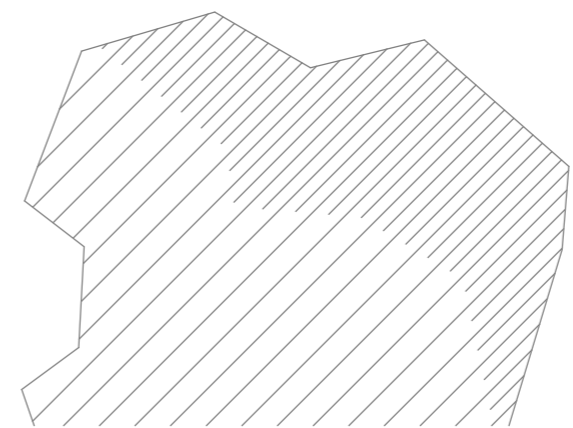
Built closed area	411,84 m <sup>2</sup>
Covered terrace	38,70 m <sup>2</sup>
Open terrace	110,11 m <sup>2</sup>
Total terrace	148,81 m <sup>2</sup>
Pool	55,12 m <sup>2</sup>

**Total built area 615,77 m<sup>2</sup>**

5   
 4   
 411,84 m<sup>2</sup>   
 4



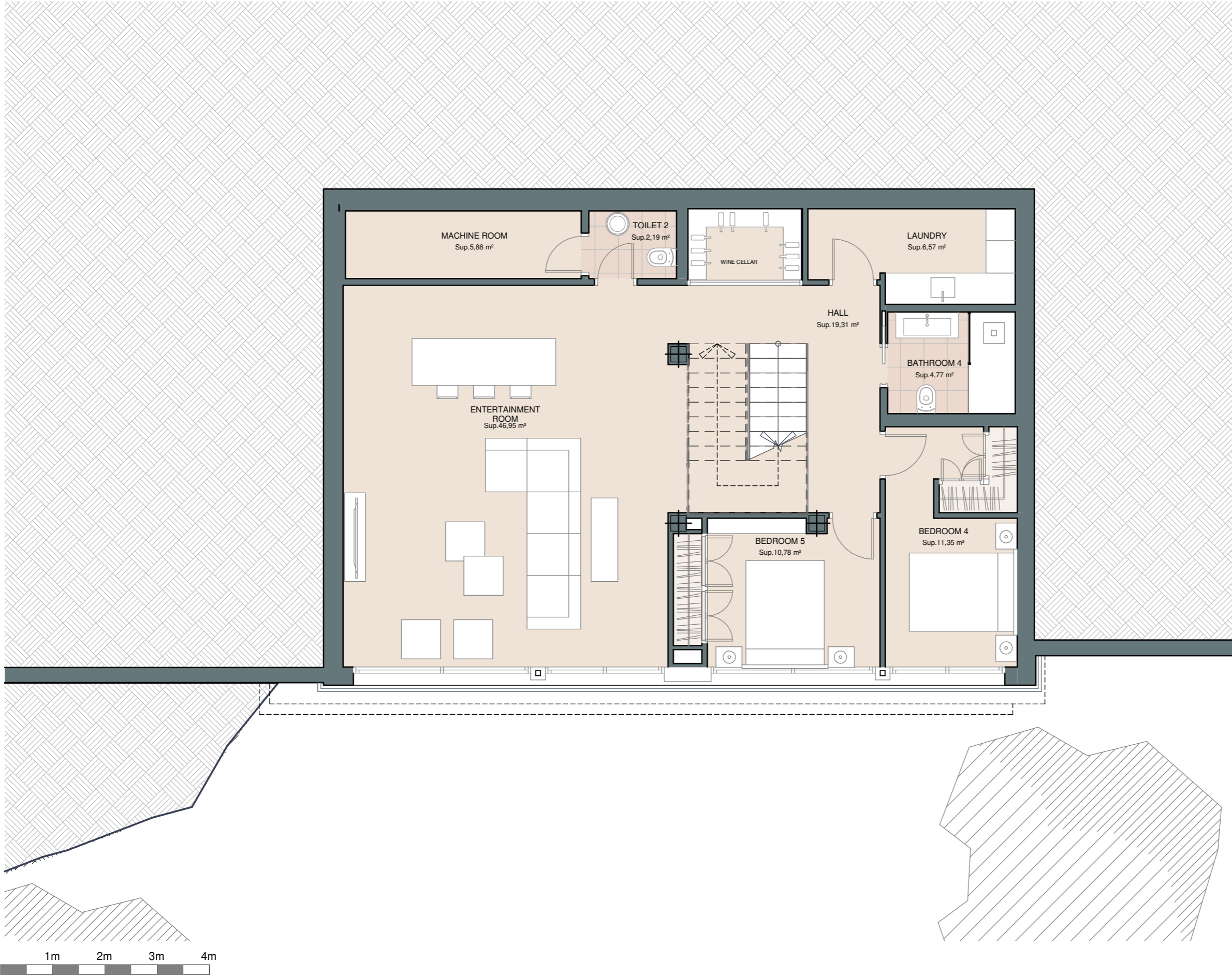
This document is for information only. The areas and measurements are approximate and may be modified for technical reasons and/or administrative issues. The room areas marked on the drawing are usable space.



# PINARES DE SAN ANTÓN | VILLA 6 | Ground Floor







COGITARI HOMES



## Villa 6

Built closed area	411,84 m <sup>2</sup>
Covered terrace	38,70 m <sup>2</sup>
Open terrace	110,11 m <sup>2</sup>
Total terrace	148,81 m <sup>2</sup>
Pool	55,12 m <sup>2</sup>

**Total built area** 615,77 m<sup>2</sup>

 5
  4
  411,84 m<sup>2</sup>
 4



This document is for information only. The areas and measurements are approximate and may be modified for technical reasons and/or administrative issues. The room areas marked on the drawing are usable space.

# PINARES DE SAN ANTÓN | VILLA 6





# PINARES DE SAN ANTÓN | VILLA 6



COGITARI HOMES



# PINARES DE SAN ANTÓN | VILLA 6



COGITARI HOMES





