

PINARES DE SAN ANTÓN | VILLA 4



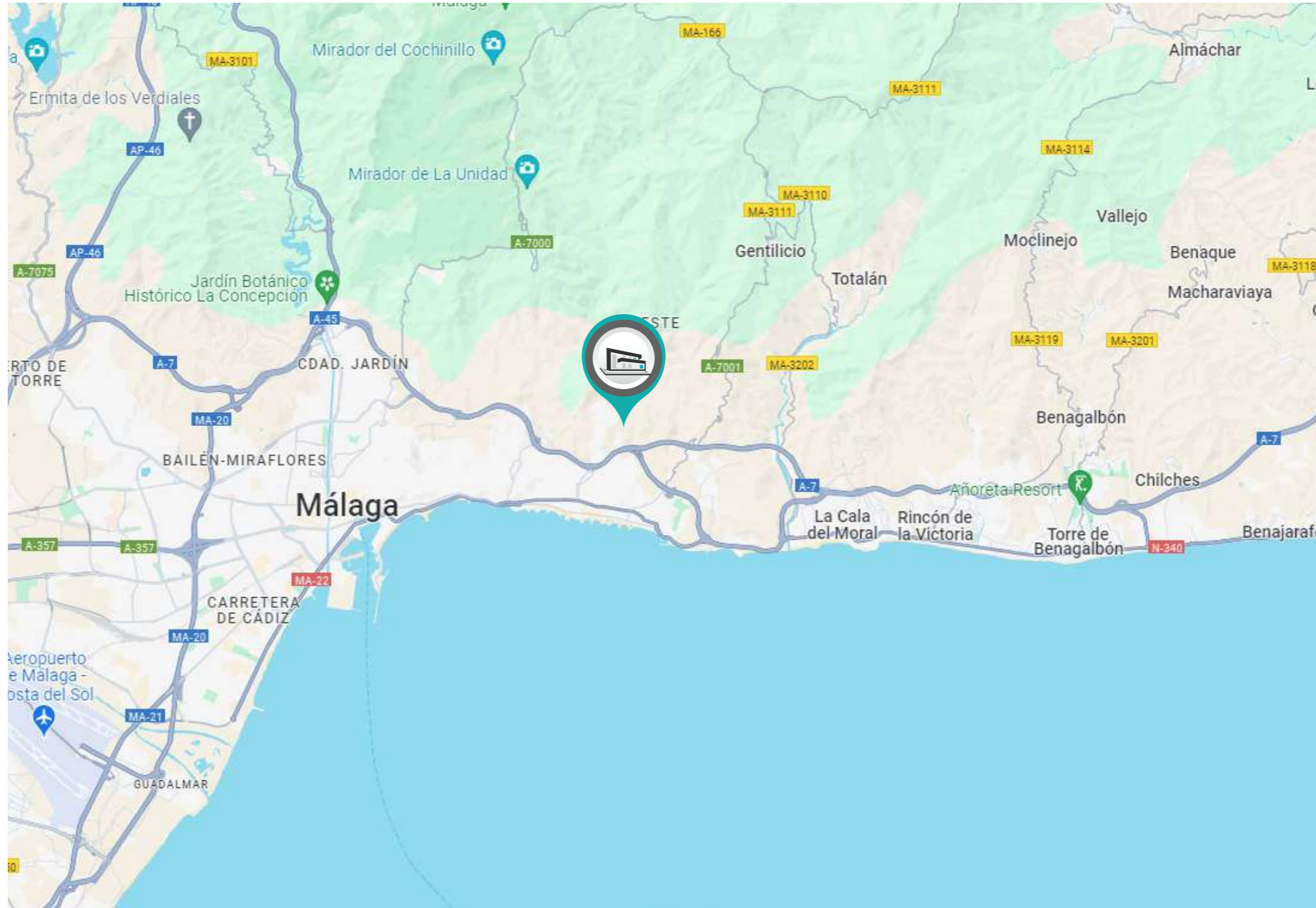
COGITARI HOMES

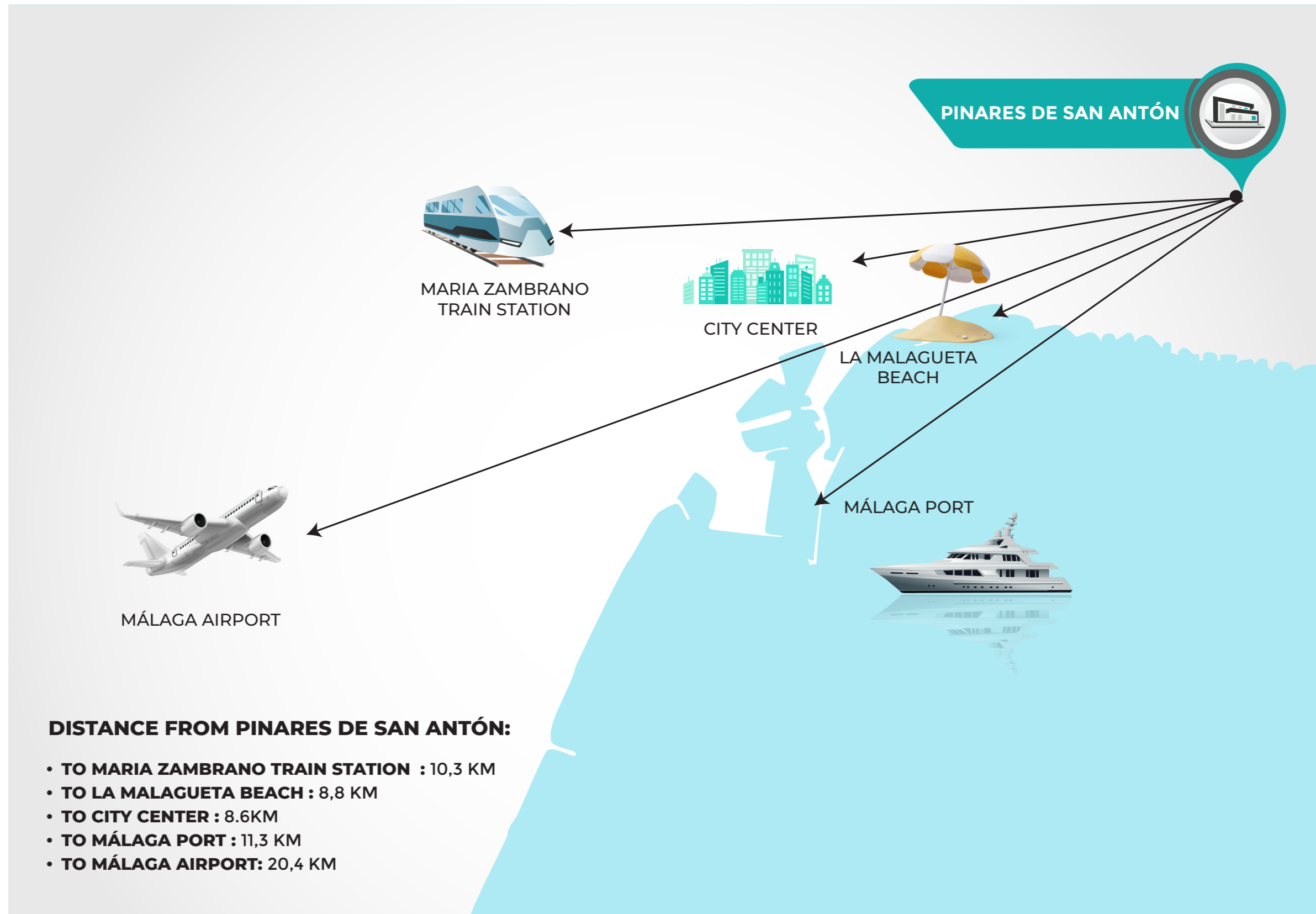


PINARES DE SAN ANTÓN | VILLA 4



COGITARI HOMES

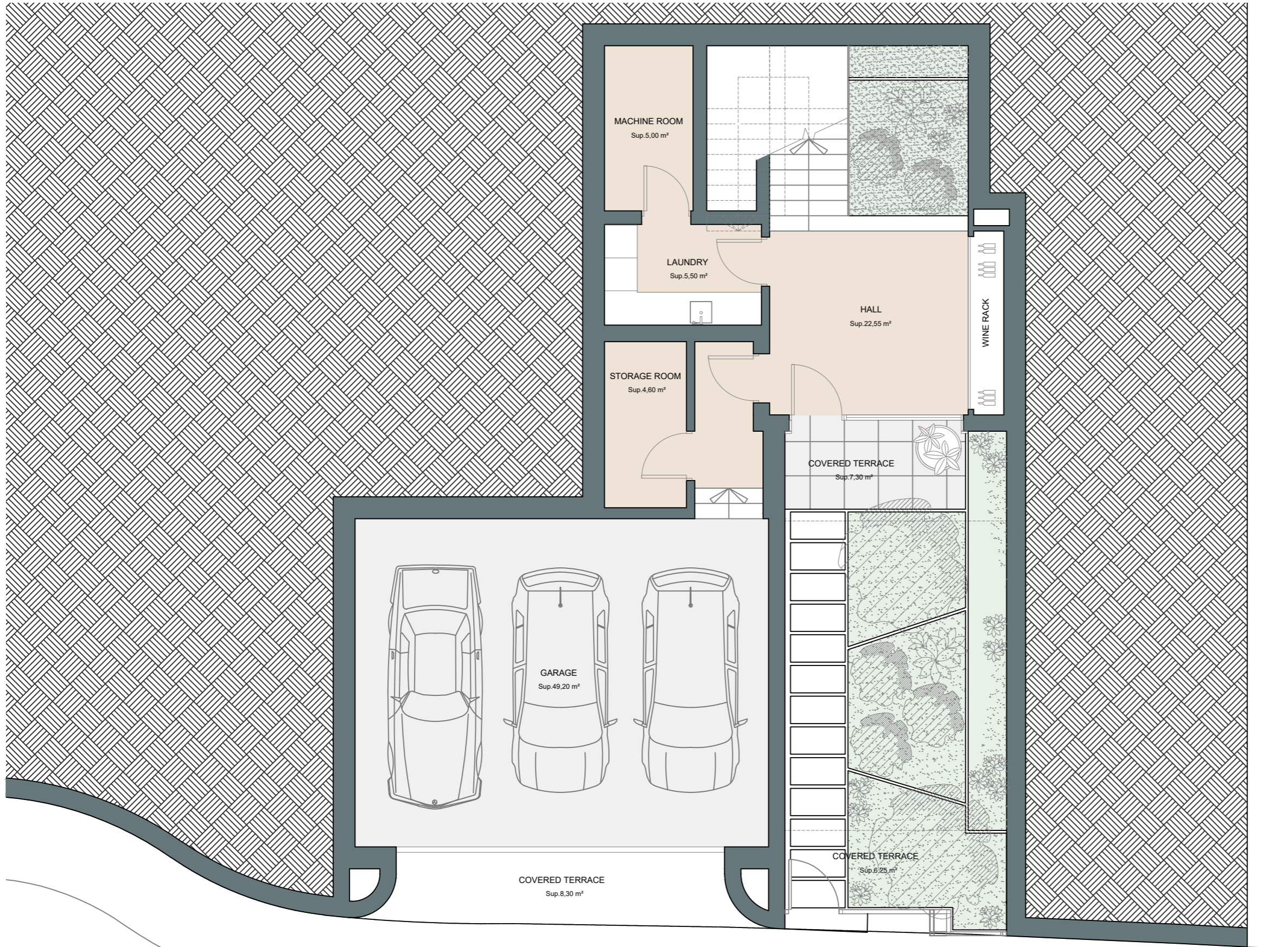




PINARES DE SAN ANTÓN | VILLA 4 | Level - 1







COGITARI HOMES

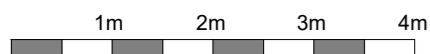


Villa 4

Built closed area	318,55 m ²
Covered terrace	42,60 m ²
Open terrace	166,00 m ²
Total terrace	208,60 m ²
Pool	38,40 m ²

Total built area 565,55 m²

 4
  3
  318,55 m²
 3



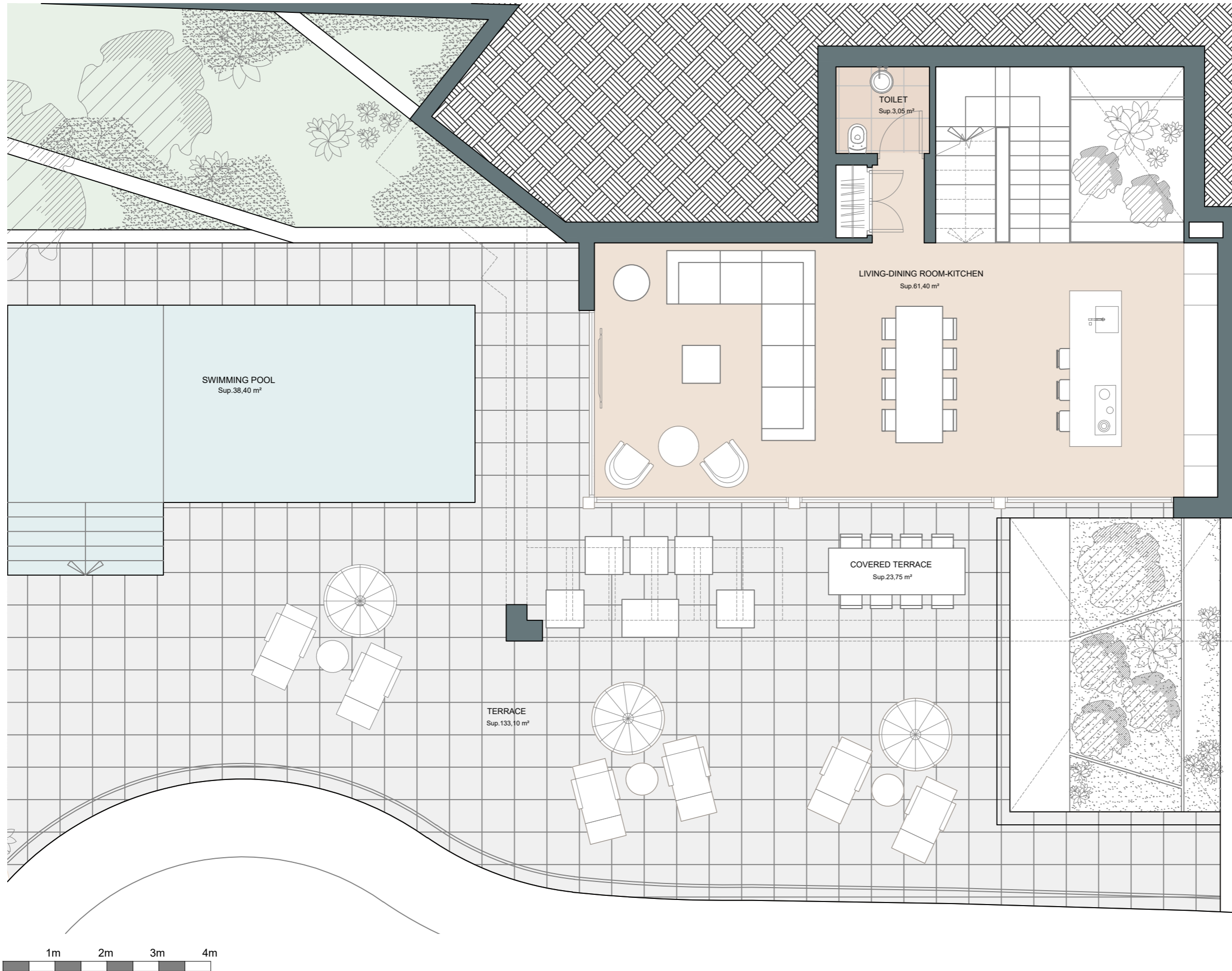
This document is for information only. The areas and measurements are approximate and may be modified for technical reasons and/or administrative issues. The room areas marked on the drawing are usable space.



PINARES DE SAN ANTÓN | VILLA 4 | Ground floor







COGITARI HOMES



Villa 4

Built closed area	318,55 m ²
Covered terrace	42,60 m ²
Open terrace	166,00 m ²
Total terrace	208,60 m ²
Pool	38,40 m ²

Total built area 565,55 m²

 4
  3
  318,55 m²
 3



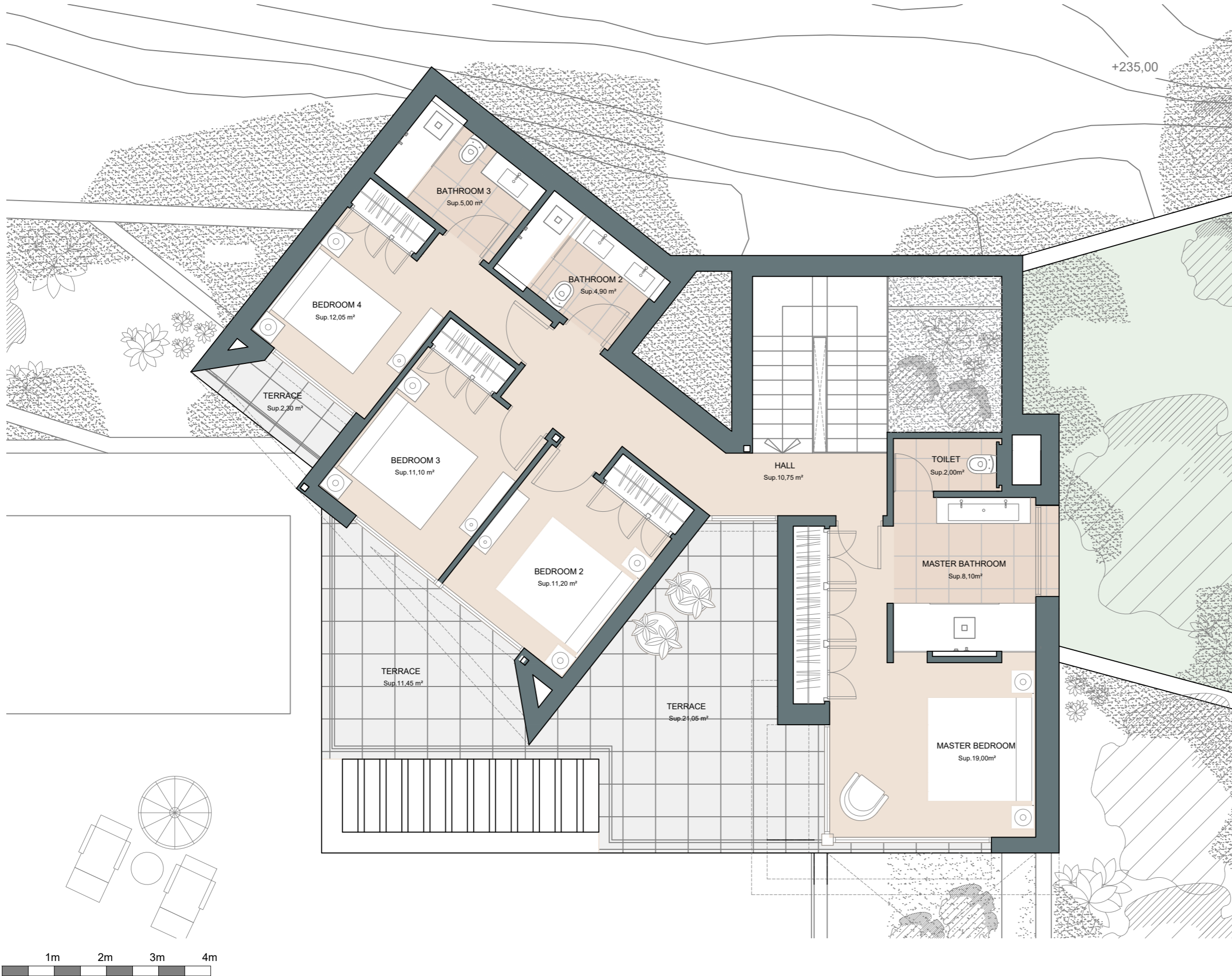
This document is for information only. The areas and measurements are approximate and may be modified for technical reasons and/or administrative issues. The room areas marked on the drawing are usable space.



PINARES DE SAN ANTÓN | VILLA 4 | Level +1



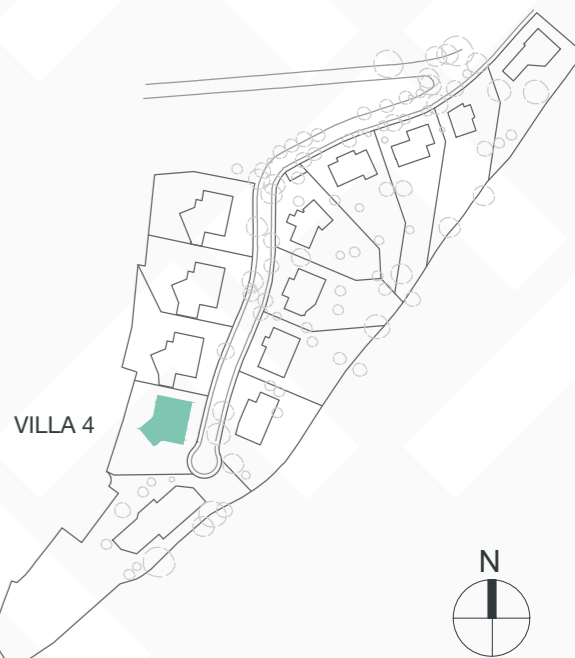
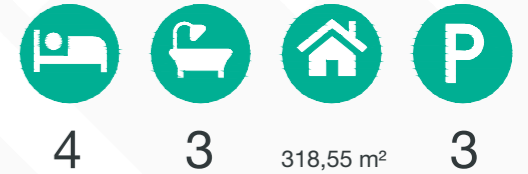
COGITARI HOMES



Villa 4

Built closed area	318,55 m ²
Covered terrace	42,60 m ²
Open terrace	166,00 m ²
Total terrace	208,60 m ²
Pool	38,40 m ²

Total built area 565,55 m²



This document is for information only. The areas and measurements are approximate and may be modified for technical reasons and/or administrative issues. The room areas marked on the drawing are usable space.

PINARES DE SAN ANTÓN | VILLA 4



COGITARI HOMES





PINARES DE SAN ANTÓN | VILLA 4



COGITARI HOMES







PINARES DE SAN ANTÓN | VILLA 4



COGITARI HOMES

