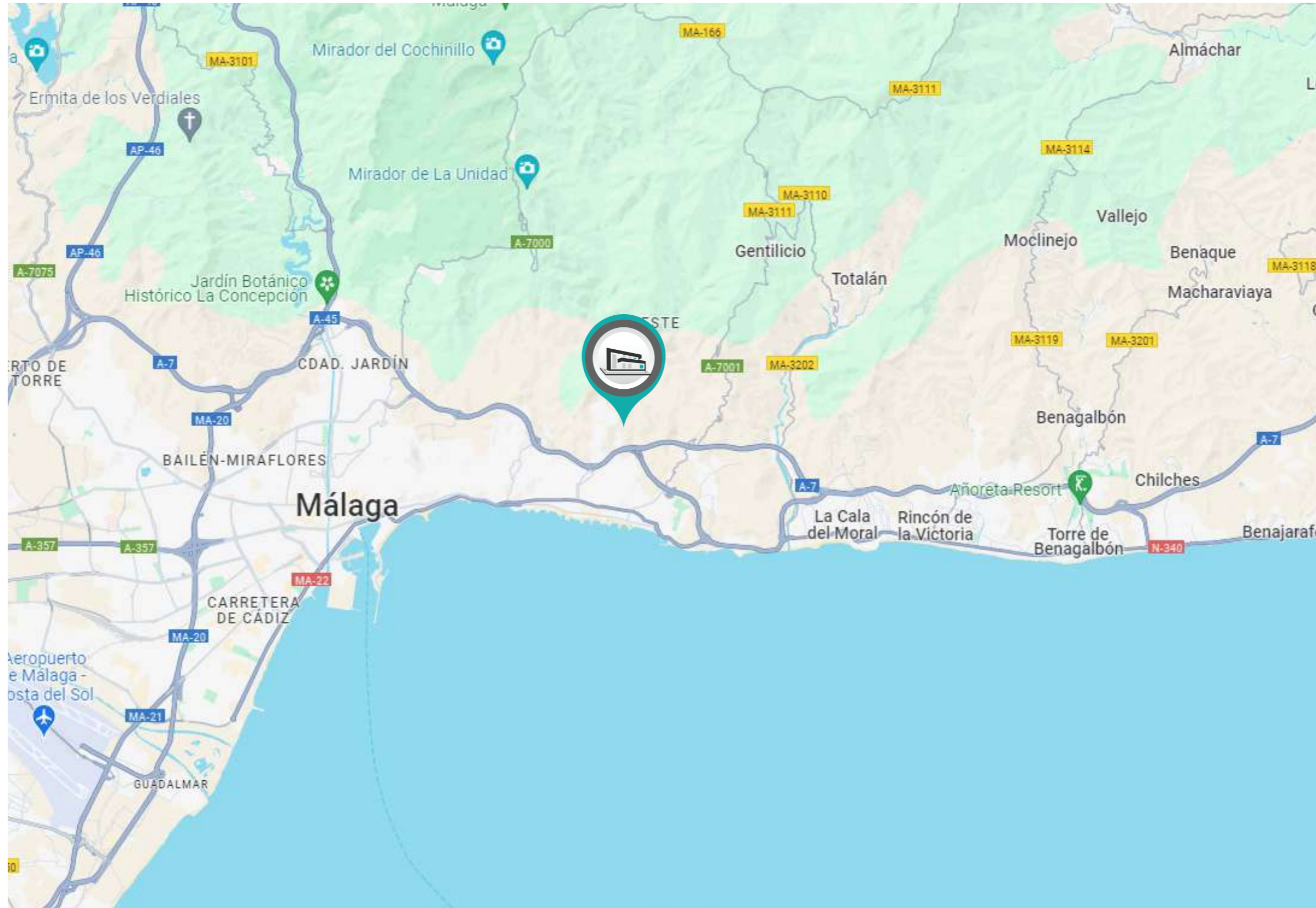


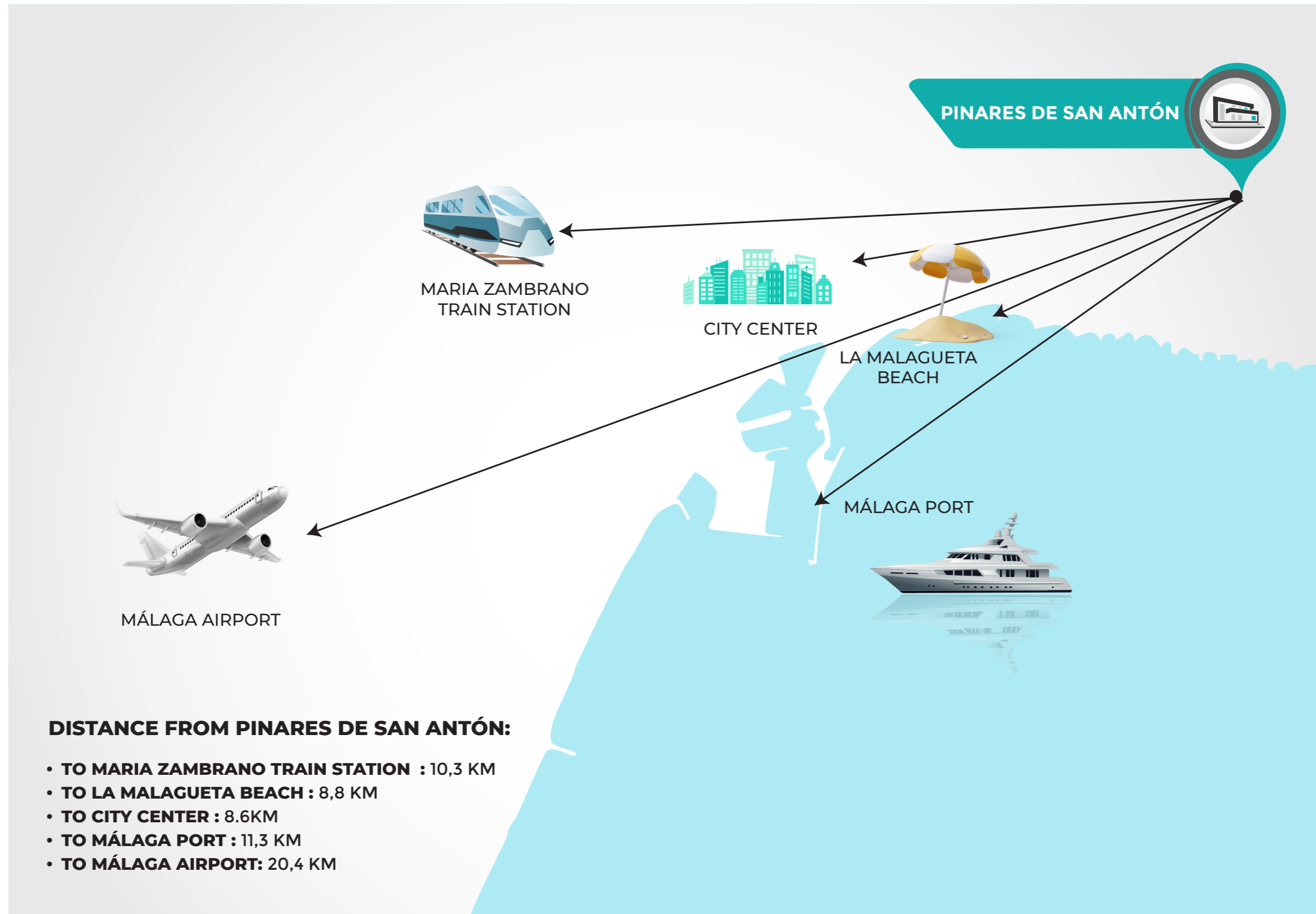


# PINARES DE SAN ANTÓN | VILLA 3



COGITARI HOMES

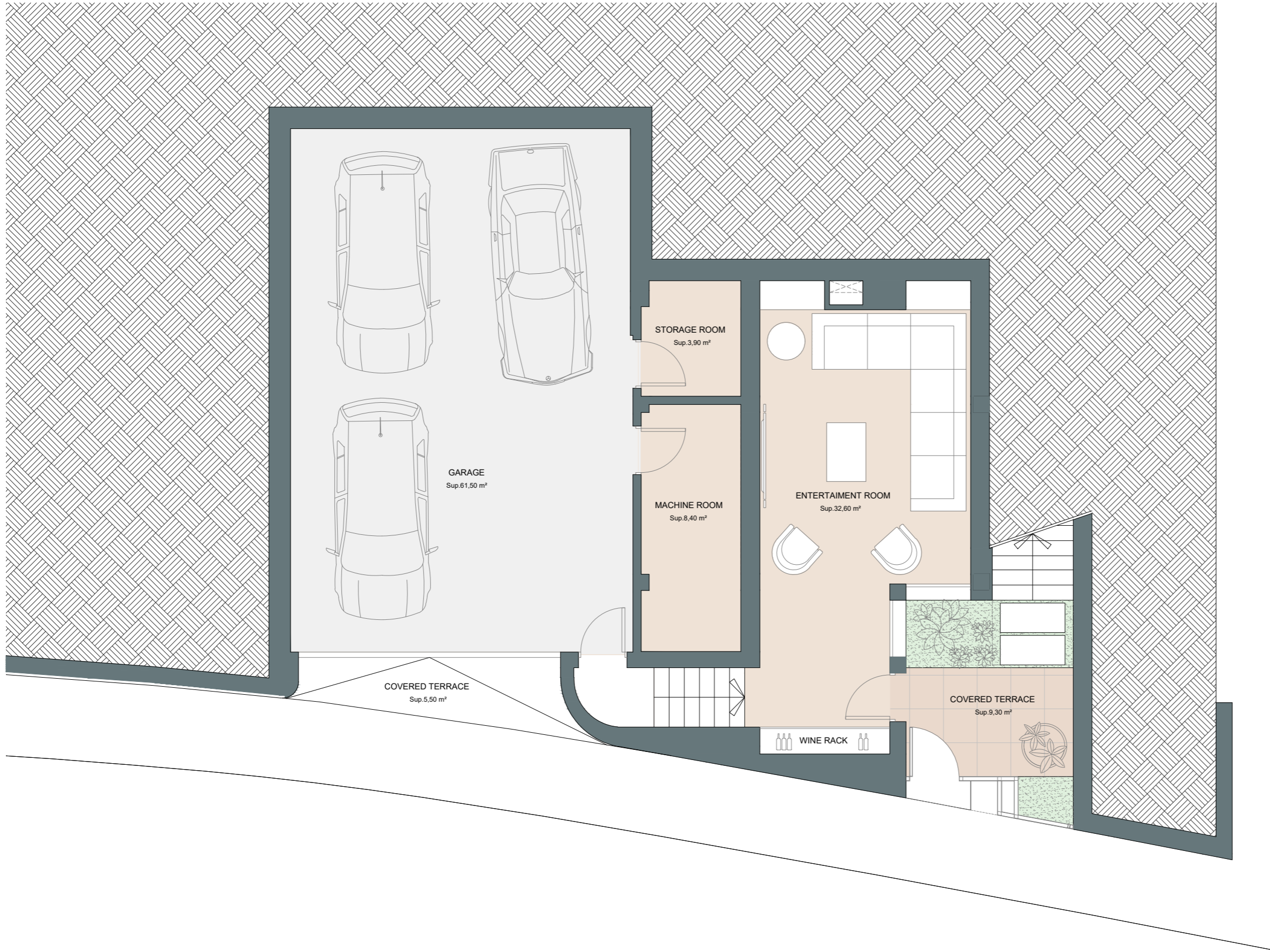




# PINARES DE SAN ANTÓN | VILLA 3 | Level - 1



COGITARI HOMES



## Villa 3

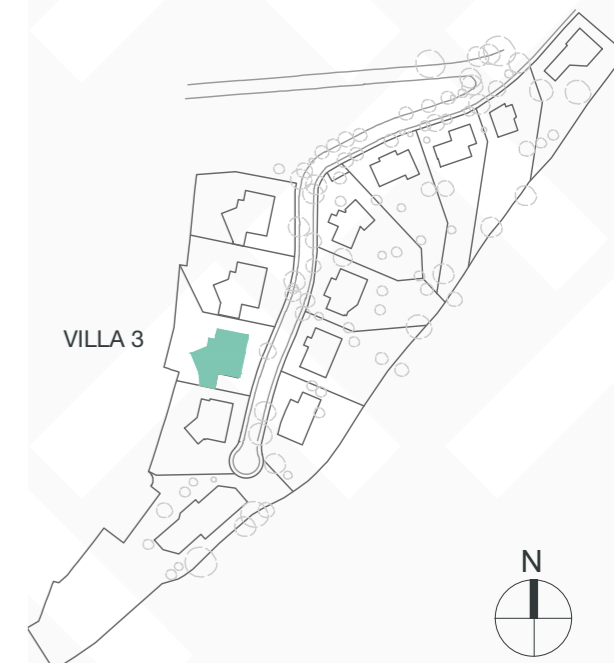
Built closed area	348,30 m <sup>2</sup>
Covered terrace	33,45 m <sup>2</sup>
Open terrace	195,50 m <sup>2</sup>
Total terrace	228,95 m <sup>2</sup>
Pool	34,00 m <sup>2</sup>

**Total built area** 611,25 m<sup>2</sup>

4 3 348,30 m<sup>2</sup> 3



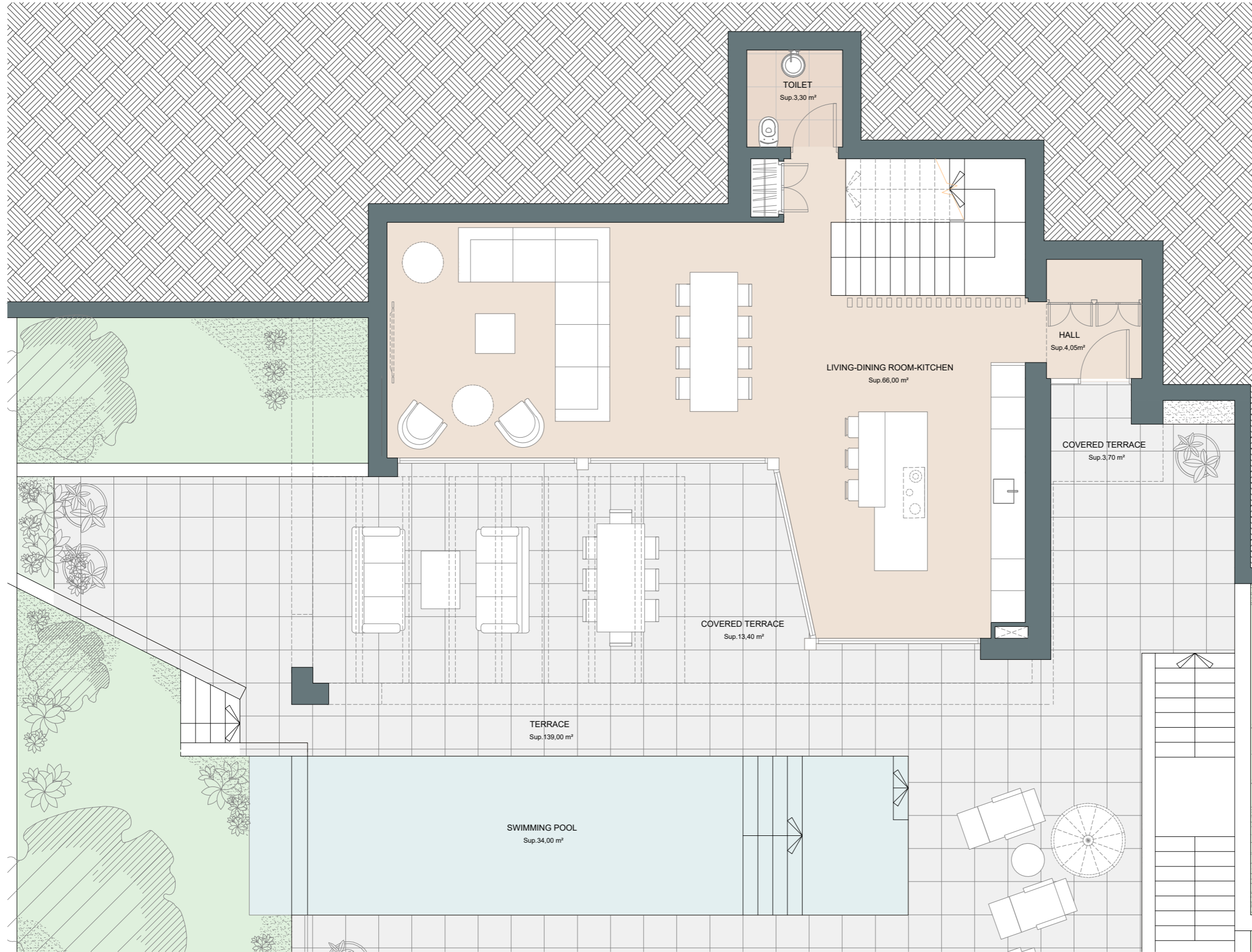
This document is for information only. The areas and measurements are approximate and may be modified for technical reasons and/or administrative issues. The room areas marked on the drawing are usable space.



# PINARES DE SAN ANTÓN | VILLA 3 | Ground floor







COGITARI HOMES

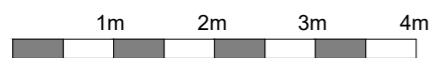


## Villa 3

Built closed area	348,30 m <sup>2</sup>
Covered terrace	33,45 m <sup>2</sup>
Open terrace	195,50 m <sup>2</sup>
Total terrace	228,95 m <sup>2</sup>
Pool	34,00 m <sup>2</sup>

**Total built area** 611,25 m<sup>2</sup>

 4
  3
  348,30 m<sup>2</sup>
 3



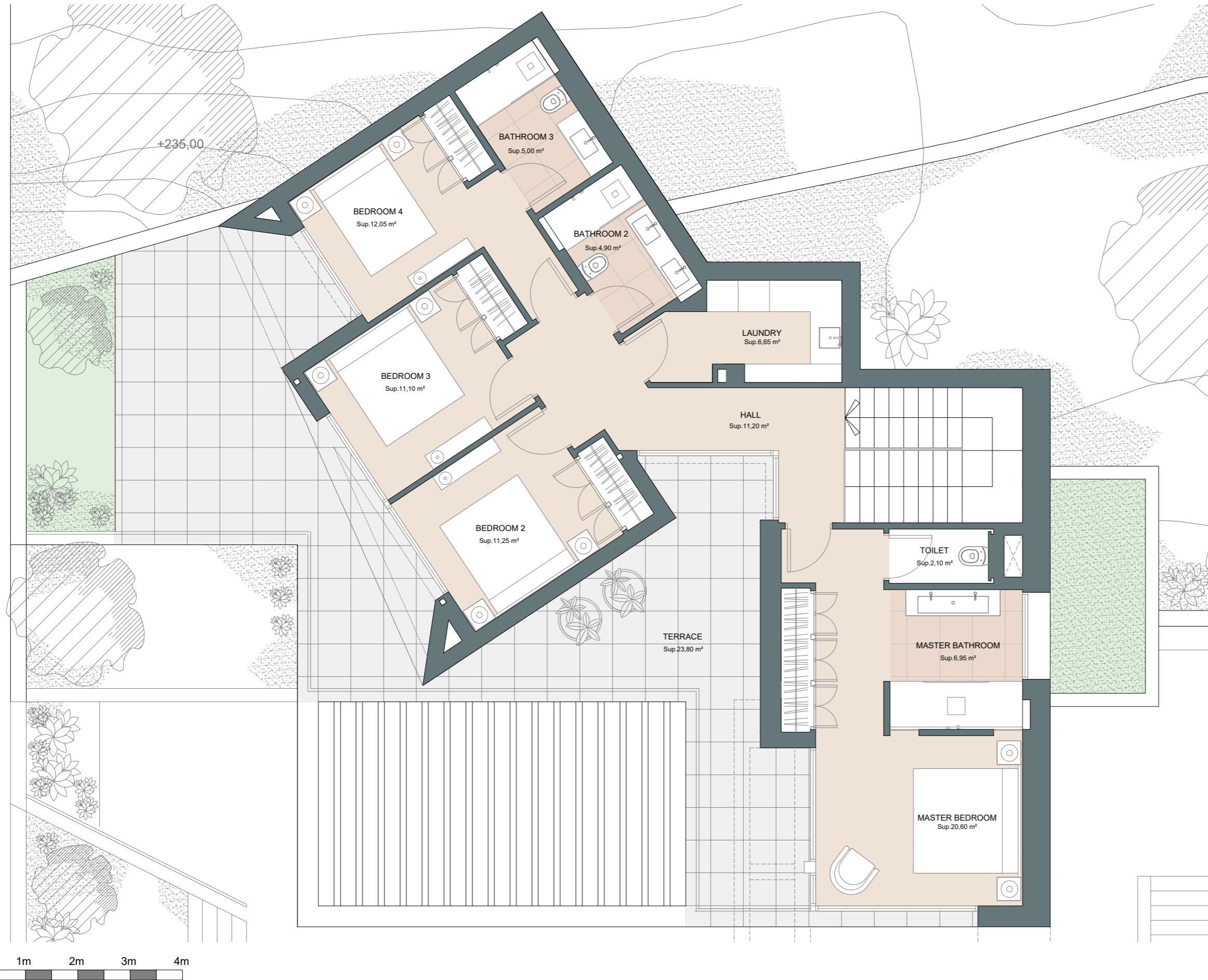
This document is for information only. The areas and measurements are approximate and may be modified for technical reasons and/or administrative issues. The room areas marked on the drawing are usable space.



# PINARES DE SAN ANTÓN | VILLA 3 | Level +1



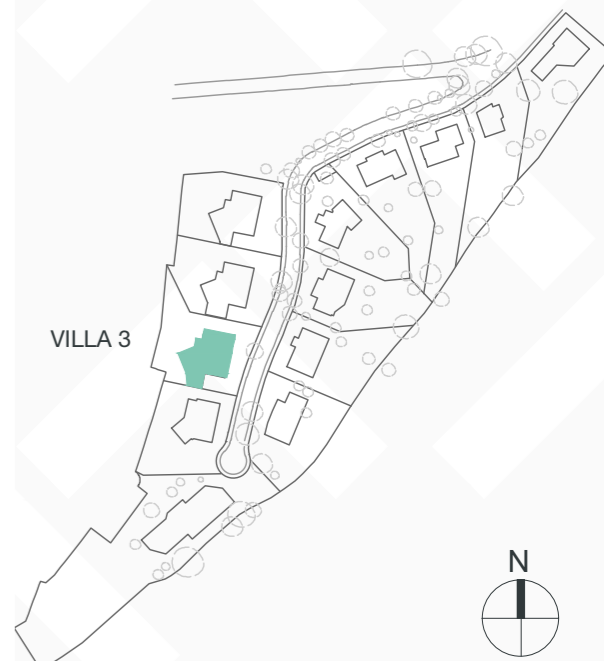
COGITARI HOMES



## Villa 3

Built closed area	348,30 m <sup>2</sup>
Covered terrace	33,45 m <sup>2</sup>
Open terrace	195,50 m <sup>2</sup>
Total terrace	228,95 m <sup>2</sup>
Pool	34,00 m <sup>2</sup>
<b>Total built area</b>	<b>611,25 m<sup>2</sup></b>

4   
 3   
 348,30 m<sup>2</sup>   
 3



This document is for information only. The areas and measurements are approximate and may be modified for technical reasons and/or administrative issues. The room areas marked on the drawing are usable space.

# PINARES DE SAN ANTÓN | VILLA 3



COGITARI HOMES













# PINARES DE SAN ANTÓN | VILLA 3



COGITARI HOMES

