

PINARES DE SAN ANTÓN | VILLA 2



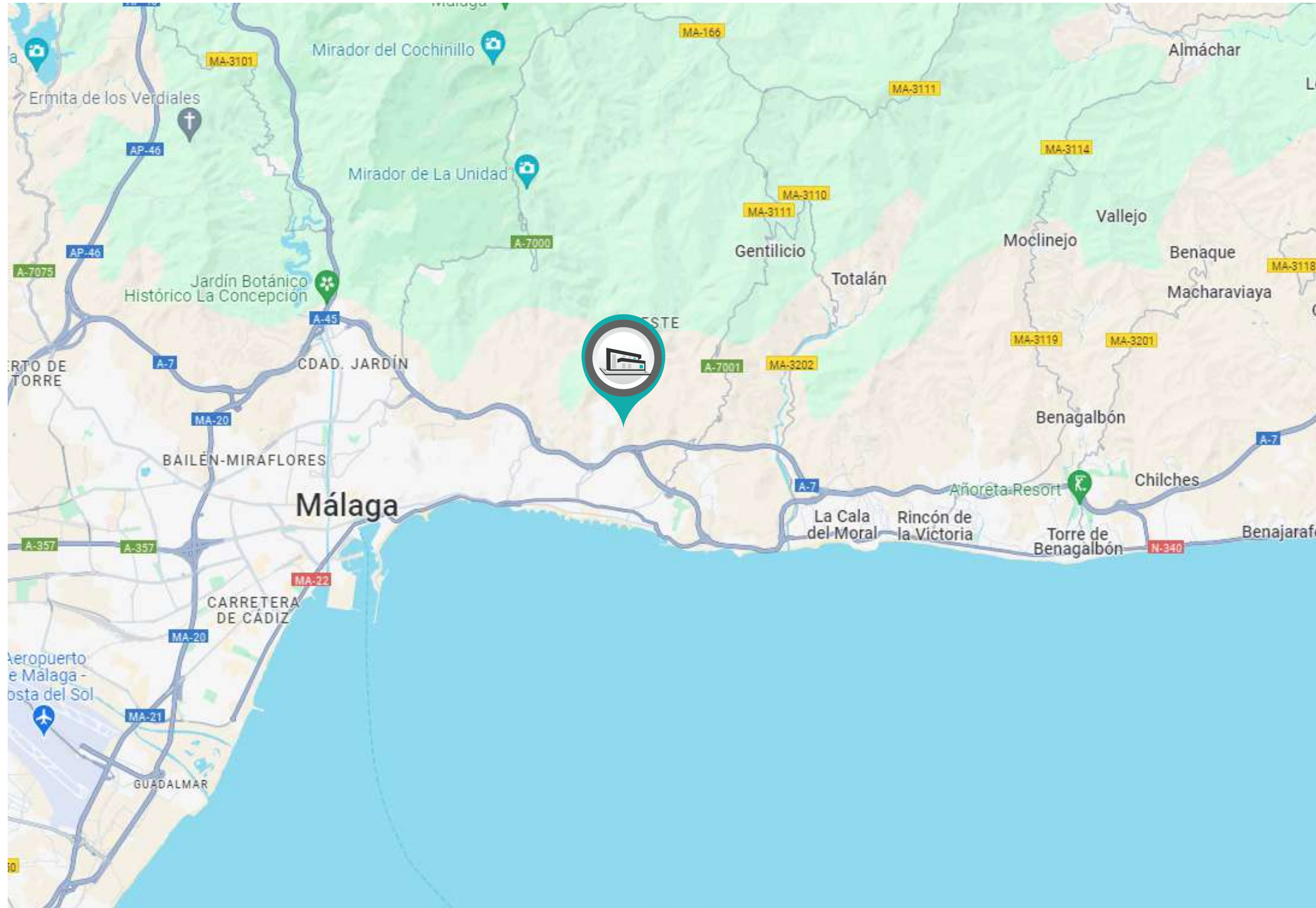
COGITARI HOMES

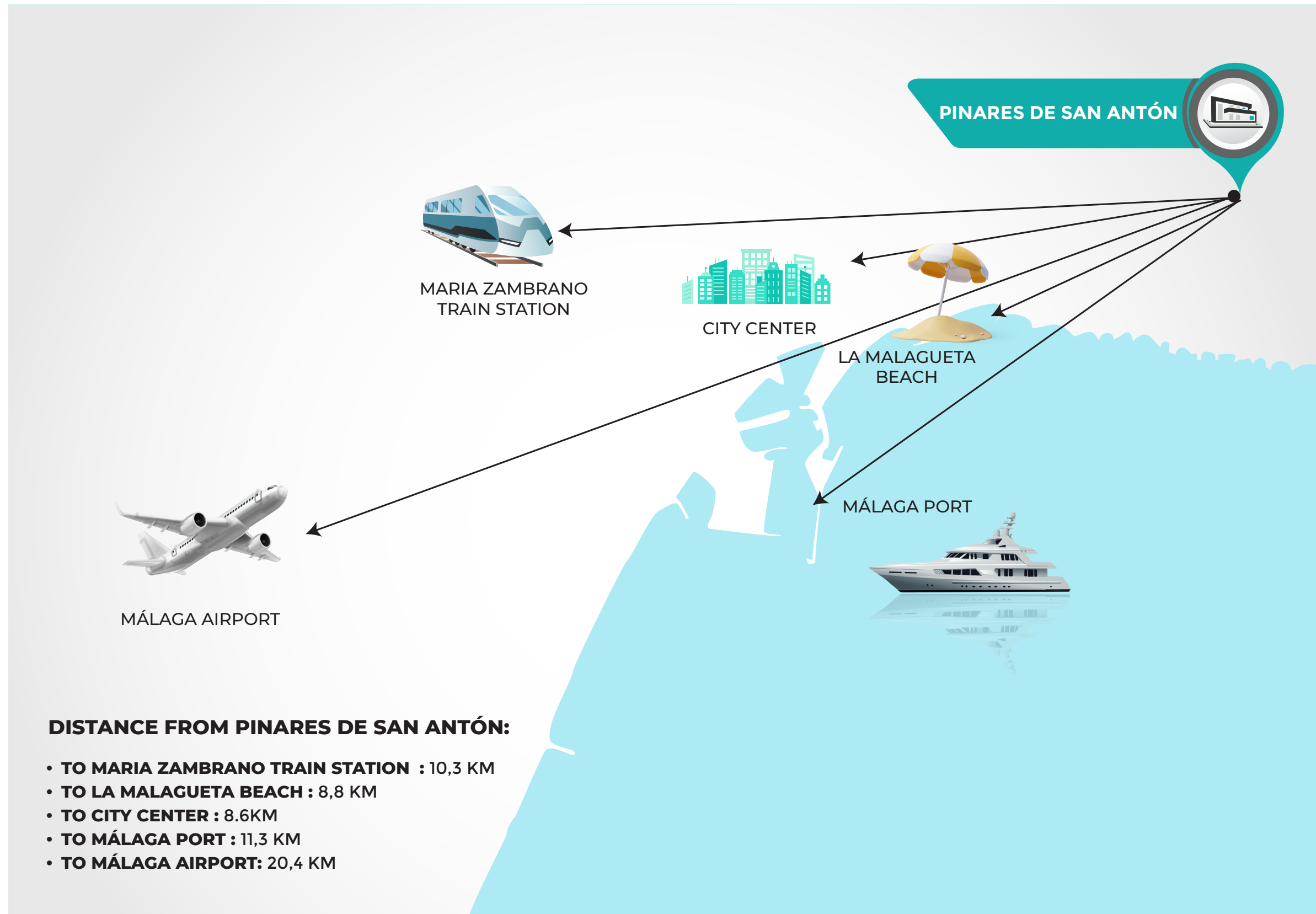


PINARES DE SAN ANTÓN | VILLA 2



COGITARI HOMES

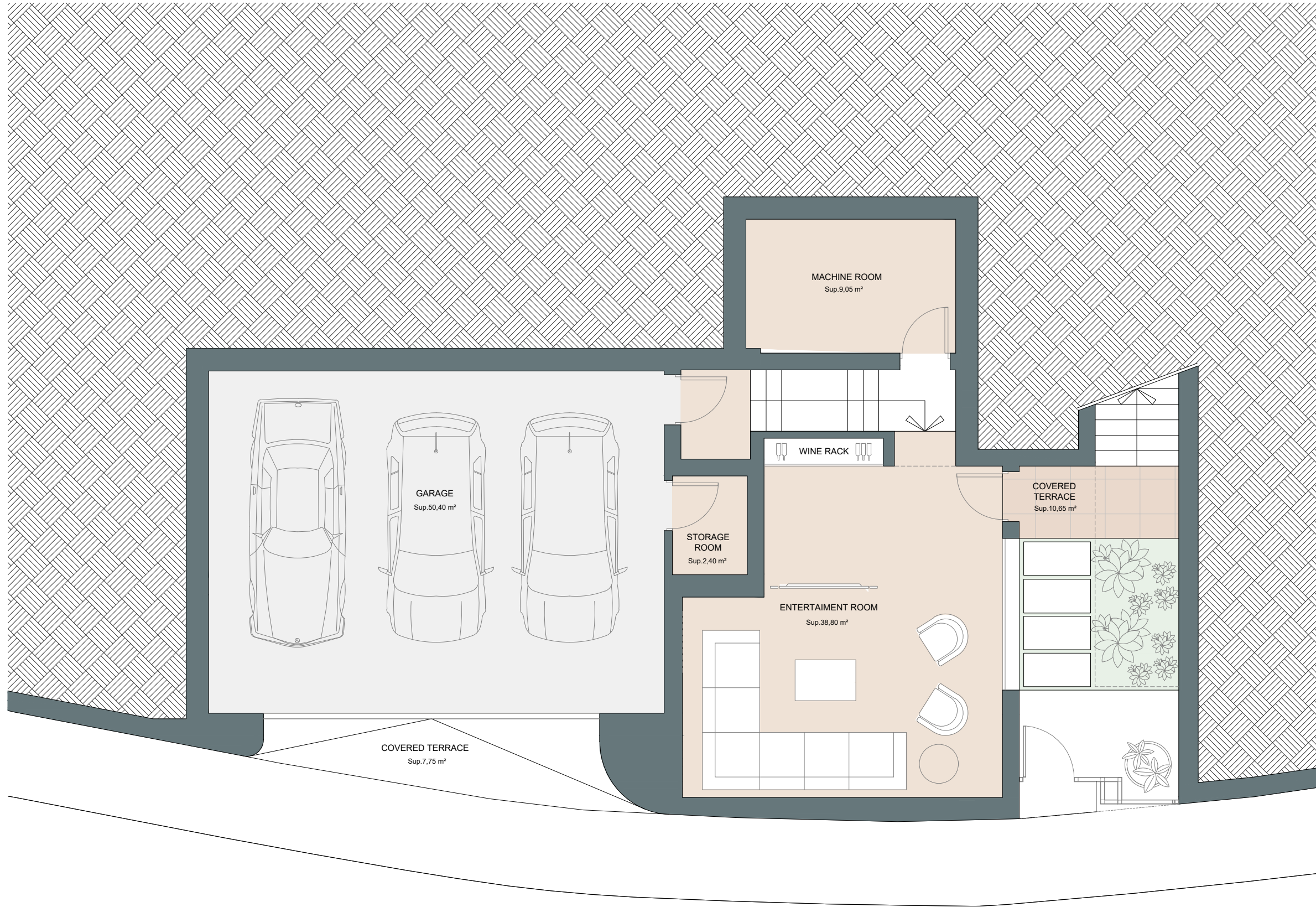




PINARES DE SAN ANTÓN | VILLA 2 | Level - 1



COGITARI HOMES



Villa 2

Built closed area	341,90 m ²
Covered terrace	41,05 m ²
Open terrace	209,45 m ²
Total terrace	250,50 m ²
Pool	37,25 m ²

Total built area 629,65 m²

4 3 341,90 m² 3



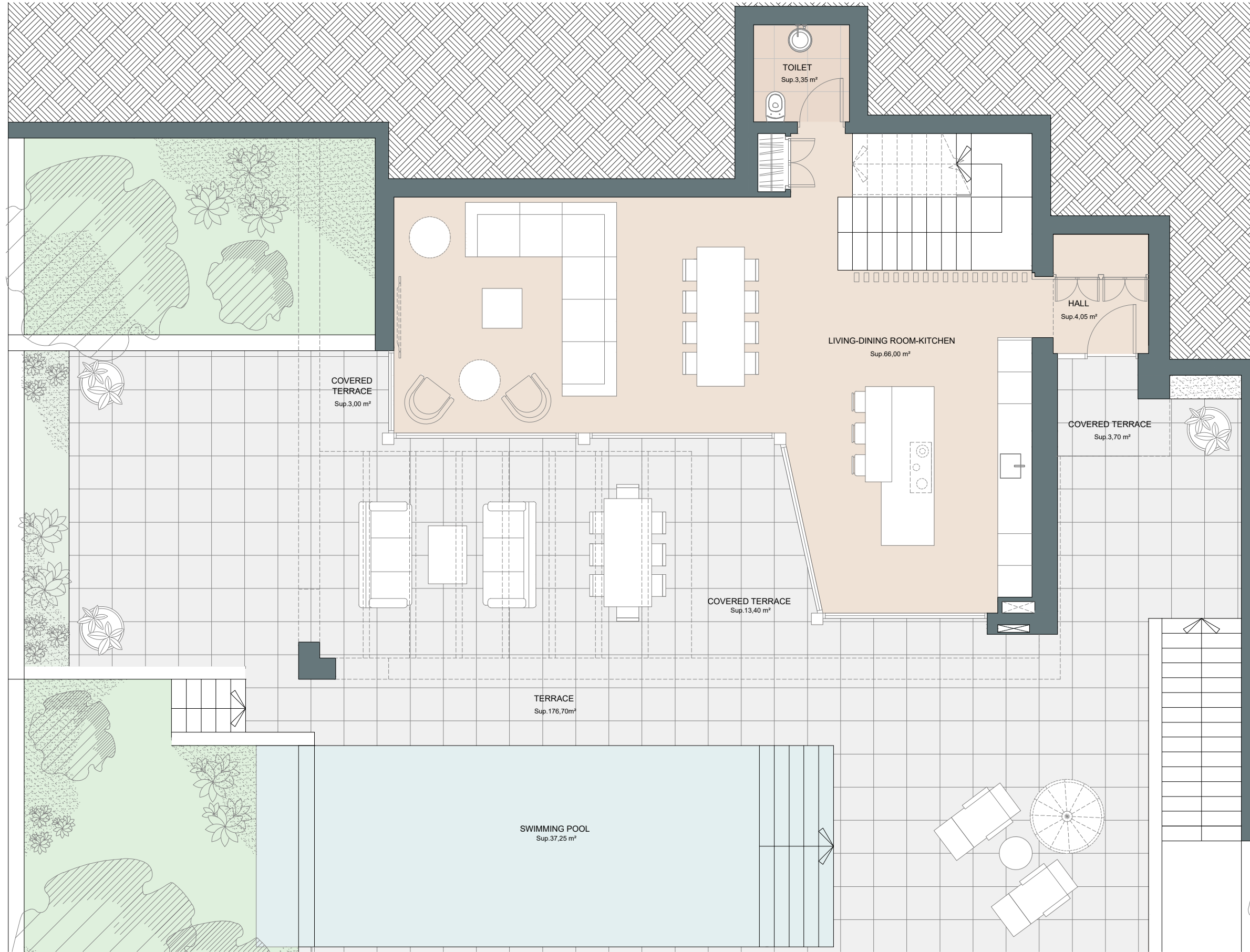
This document is for information only. The areas and measurements are approximate and may be modified for technical reasons and/or administrative issues. The room areas marked on the drawing are usable space.



PINARES DE SAN ANTÓN | VILLA 2 | Ground floor



COGITARI HOMES



Villa 2

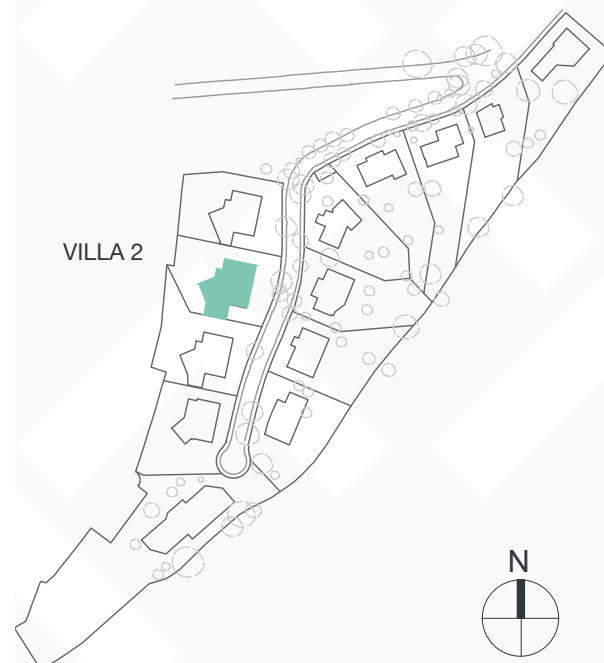
Built closed area	341,90 m ²
Covered terrace	41,05 m ²
Open terrace	209,45 m ²
Total terrace	250,50 m ²
Pool	37,25 m ²

Total built area 629,65 m²

4
 3
 341,90 m²
 3



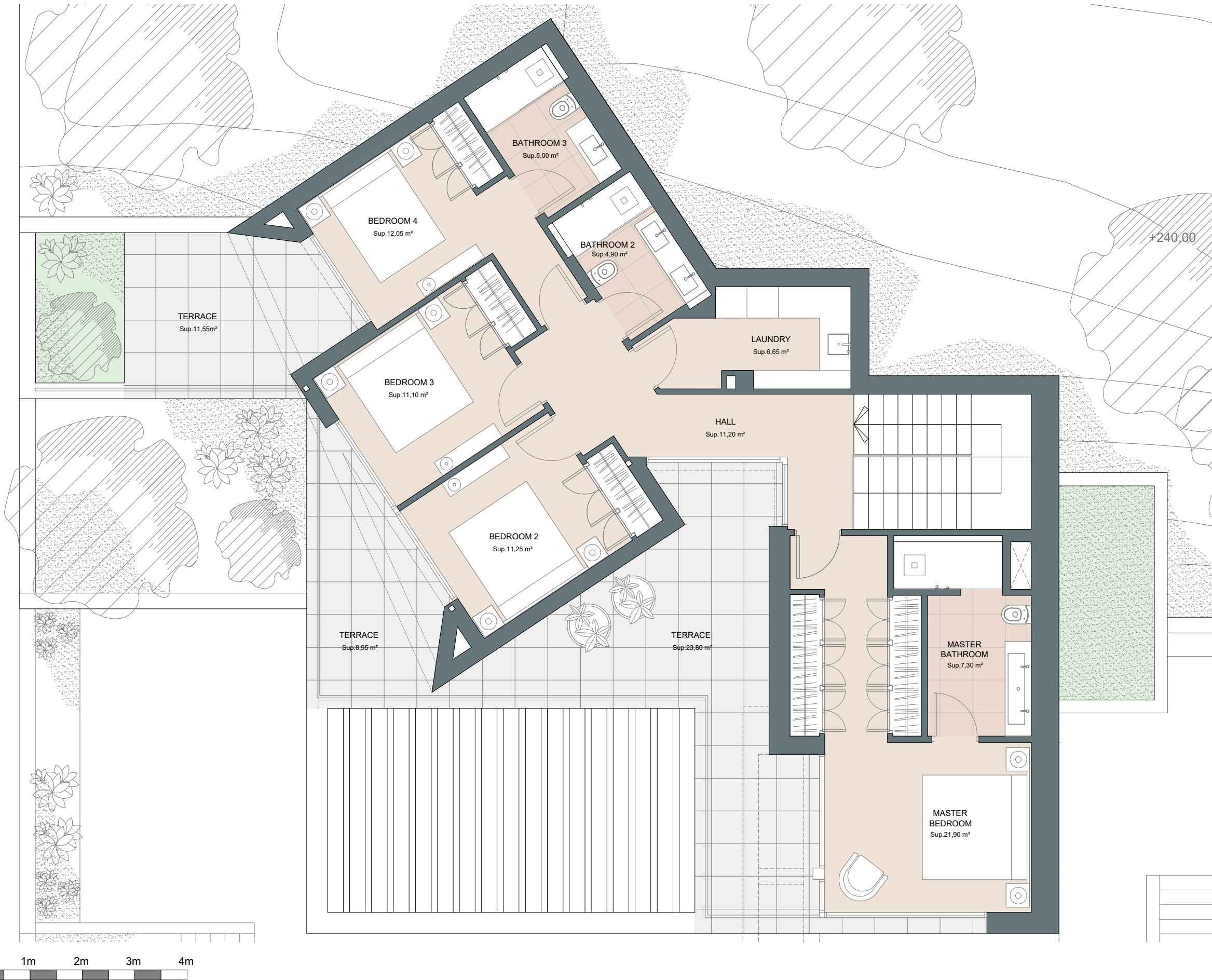
This document is for information only. The areas and measurements are approximate and may be modified for technical reasons and/or administrative issues. The room areas marked on the drawing are usable space.



PINARES DE SAN ANTÓN | VILLA 2 | Level +1



COGITARI HOMES



Villa 2

Built closed area	341,90 m ²
Covered terrace	41,05 m ²
Open terrace	209,45 m ²
Total terrace	250,50 m ²
Pool	37,25 m ²
Total built area	629,65 m²

4
 3
 341,90 m²
 3

This document is for information only. The areas and measurements are approximate and may be modified for technical reasons and/or administrative issues. The room areas marked on the drawing are usable space.

PINARES DE SAN ANTÓN | VILLA 2



COGITARI HOMES



PINARES DE SAN ANTÓN | VILLA 2



COGITARI HOMES









PINARES DE SAN ANTÓN | VILLA 2



COGITARI HOMES

