





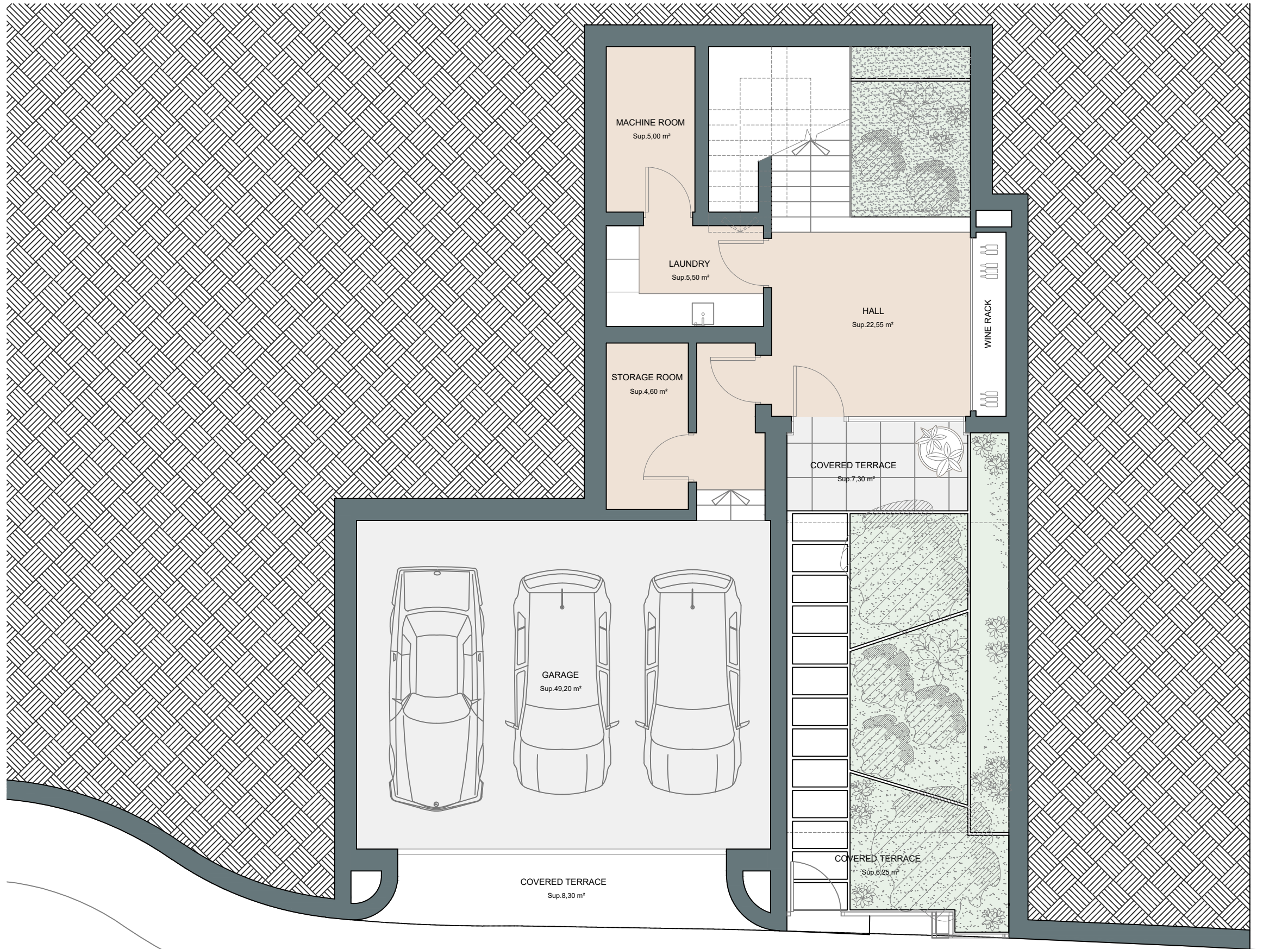
COGITARI HOMES

Villa 4

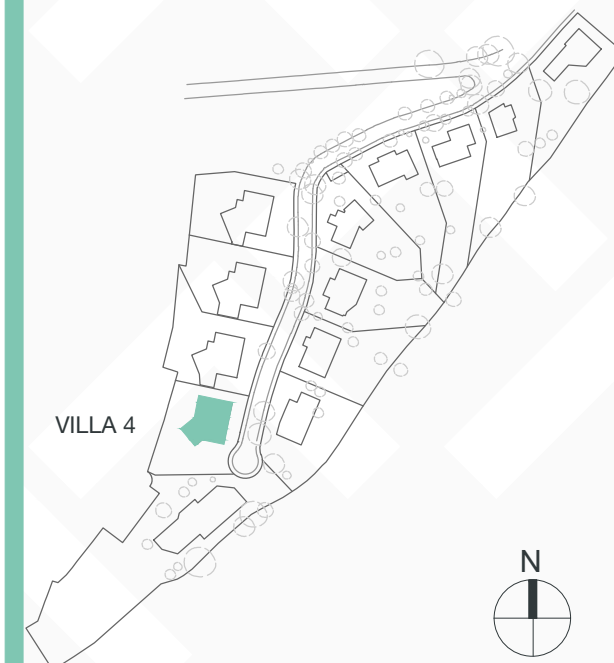
|                   |                       |
|-------------------|-----------------------|
| Built closed area | 318,55 m <sup>2</sup> |
| Covered terrace   | 42,60 m <sup>2</sup>  |
| Open terrace      | 166,00 m <sup>2</sup> |
| Total terrace     | 208,60 m <sup>2</sup> |
| Pool              | 38,40 m <sup>2</sup>  |

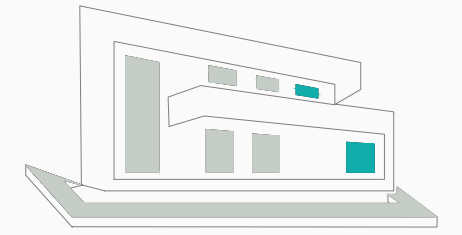
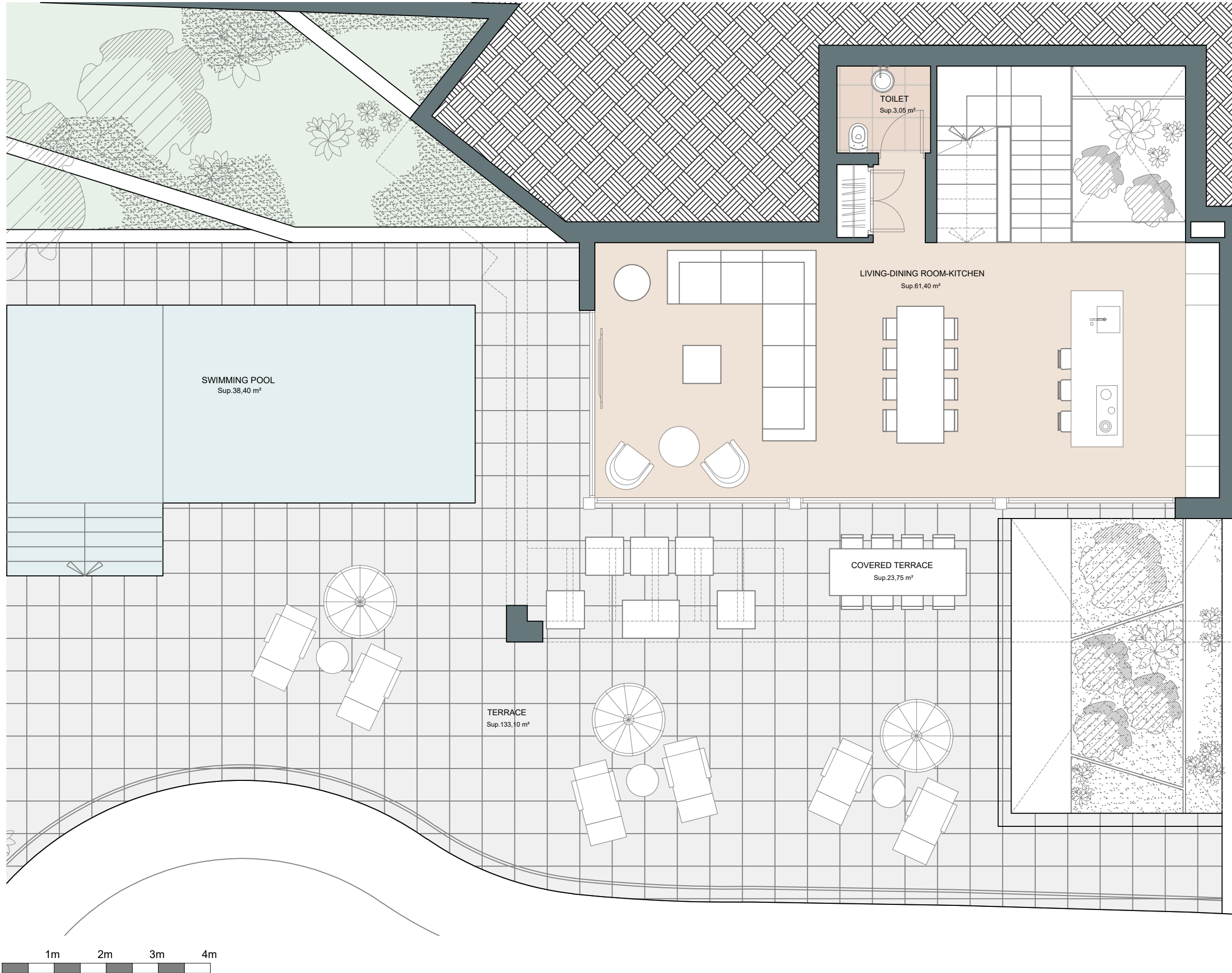
**Total built area 565,55 m<sup>2</sup>**

 4
  3
  318,55 m<sup>2</sup>
 3



This document is for information only. The areas and measurements are approximate and may be modified for technical reasons and/or administrative issues. The room areas marked on the drawing are usable space.









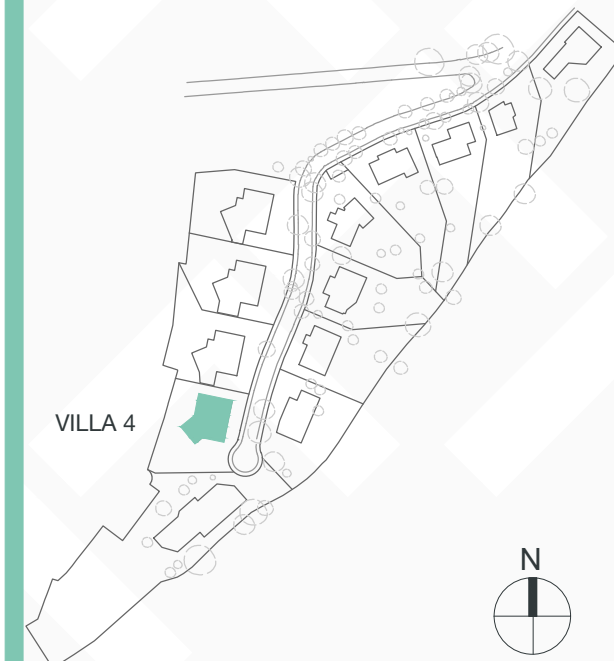
COGITARI HOMES

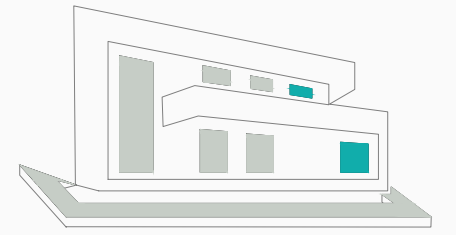
Villa 4

|                   |                       |
|-------------------|-----------------------|
| Built closed area | 318,55 m <sup>2</sup> |
| Covered terrace   | 42,60 m <sup>2</sup>  |
| Open terrace      | 166,00 m <sup>2</sup> |
| Total terrace     | 208,60 m <sup>2</sup> |
| Pool              | 38,40 m <sup>2</sup>  |

**Total built area** 565,55 m<sup>2</sup>

 4
  3
  318,55 m<sup>2</sup>
 3









COGITARI HOMES

Villa 4

|                   |                       |
|-------------------|-----------------------|
| Built closed area | 318,55 m <sup>2</sup> |
| Covered terrace   | 42,60 m <sup>2</sup>  |
| Open terrace      | 166,00 m <sup>2</sup> |
| Total terrace     | 208,60 m <sup>2</sup> |
| Pool              | 38,40 m <sup>2</sup>  |

**Total built area 565,55 m<sup>2</sup>**

 4
  3
  318,55 m<sup>2</sup>
 3

