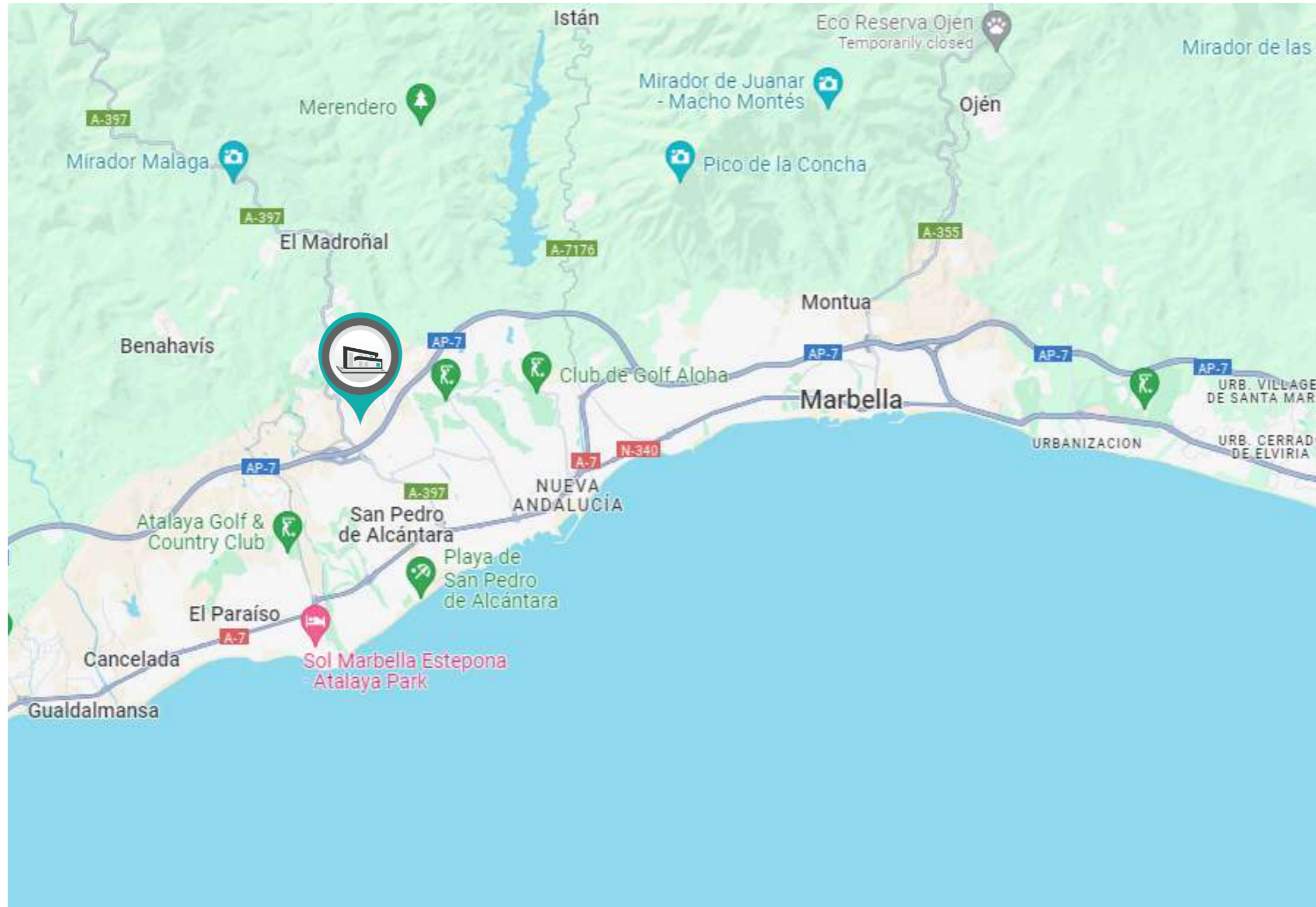
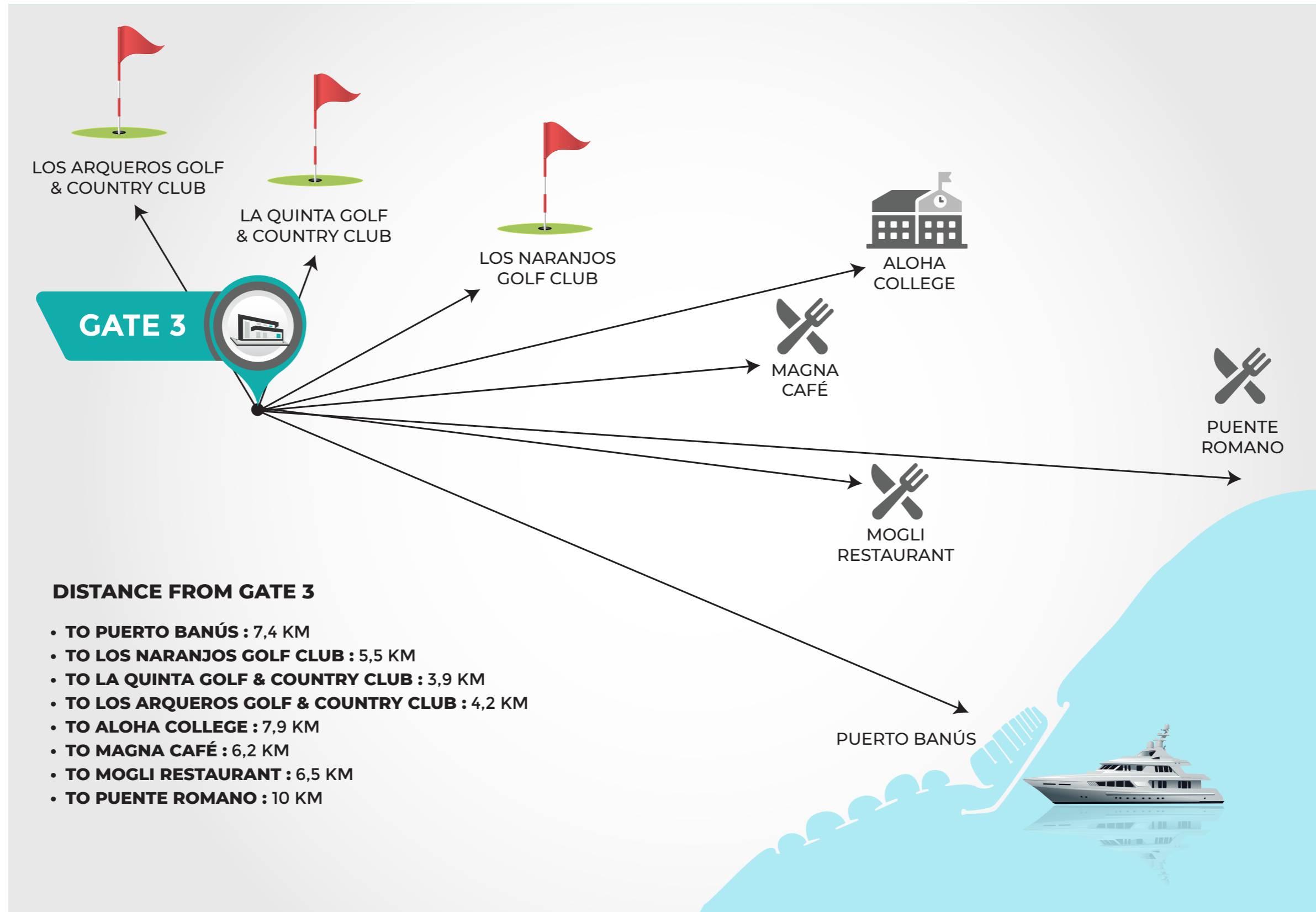




GATE 3 | La Quinta, Marbella | Villa A

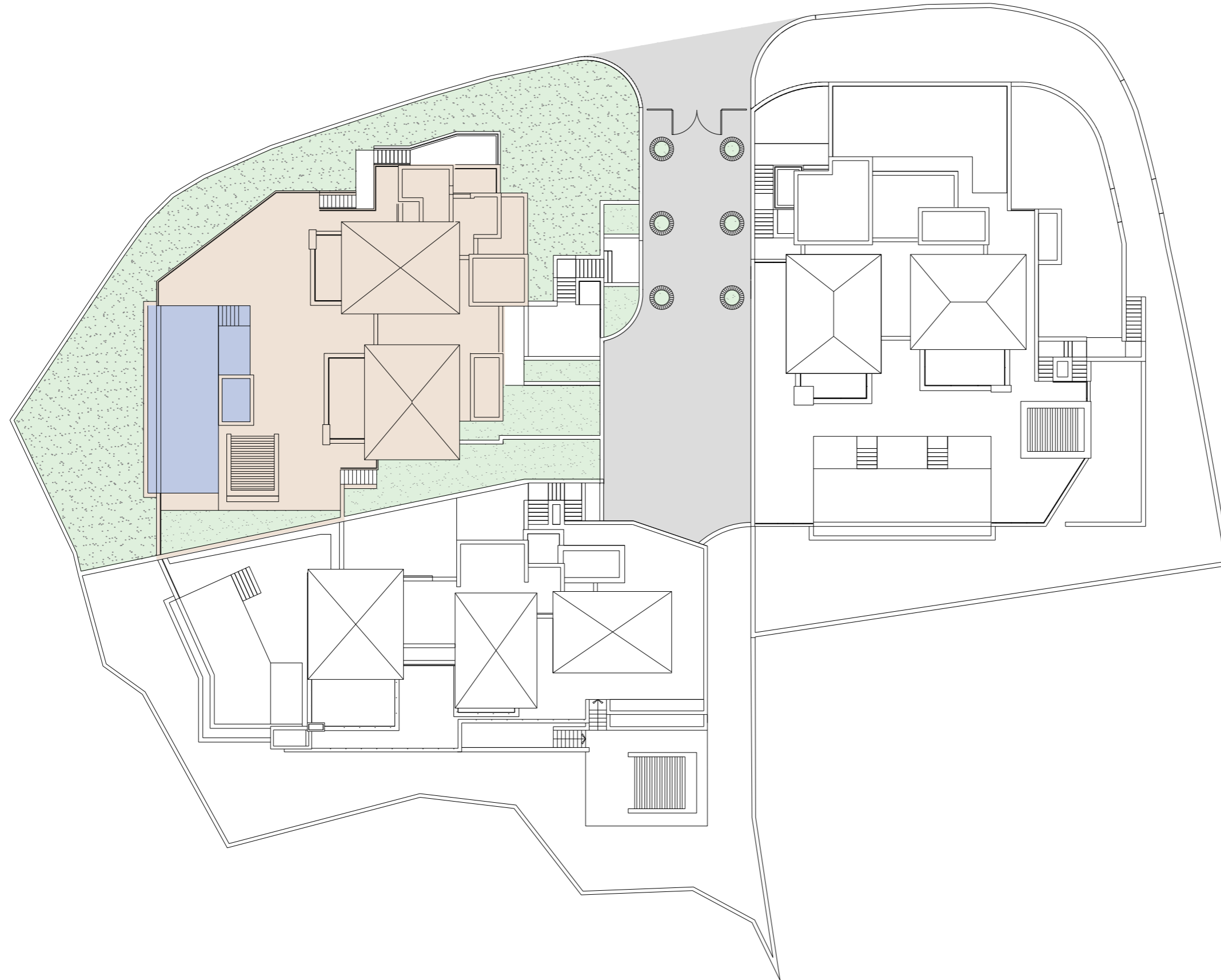




GATE 3 | La Quinta, Marbella | Villa A | Site plan



COGITARI HOMES



VILLA A. LA QUINTA

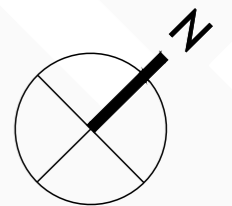
Built closed area	640,00 m ²
Covered terrace	42,20 m ²
Open terrace	303,90 m ²
Open terrace pergola	16,95 m ²
Total terrace	363,05 m ²
Pool	87,30 m ²
Total built area	1.036,80 m ²



5 6 1.036,80 m² 3

1m 5m 10m
SCALE 1:300

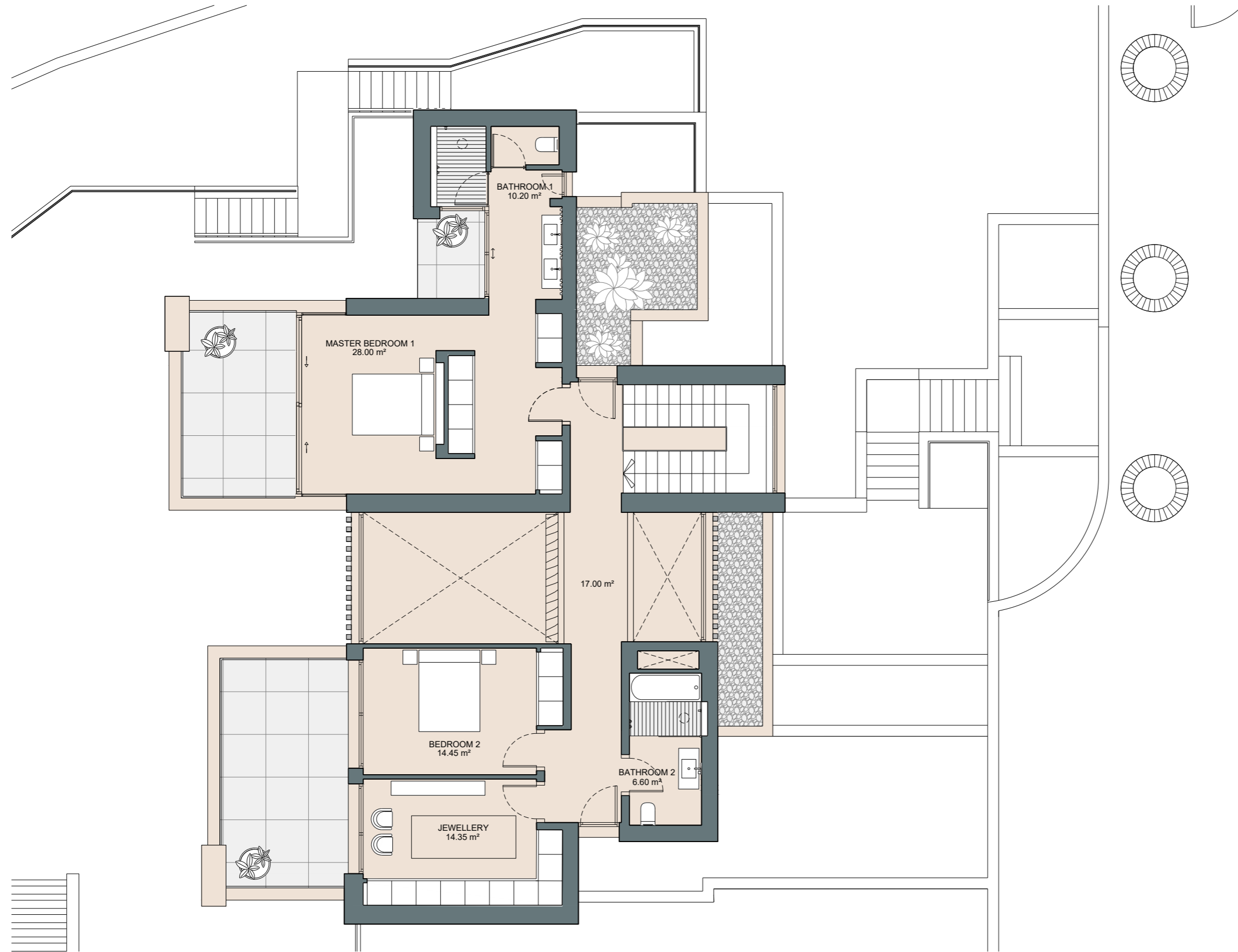
This document is for information only. The areas and measurements are approximate and may be modified for technical reasons and/or administrative issues. The room areas marked on the drawing are usable space.



GATE 3 | La Quinta, Marbella | Villa A | First level



COGITARI HOMES

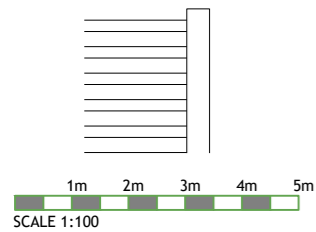


VILLA A. LA QUINTA

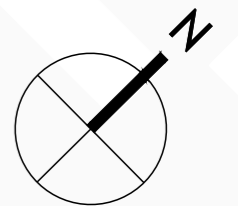
Built closed area	640,00 m ²
Covered terrace	42,20 m ²
Open terrace	303,90 m ²
Open terrace pergola	16,95 m ²
Total terrace	363,05 m ²
Pool	87,30 m ²
Total built area	1.036,80 m²



5 6 1.036,80 m² 3



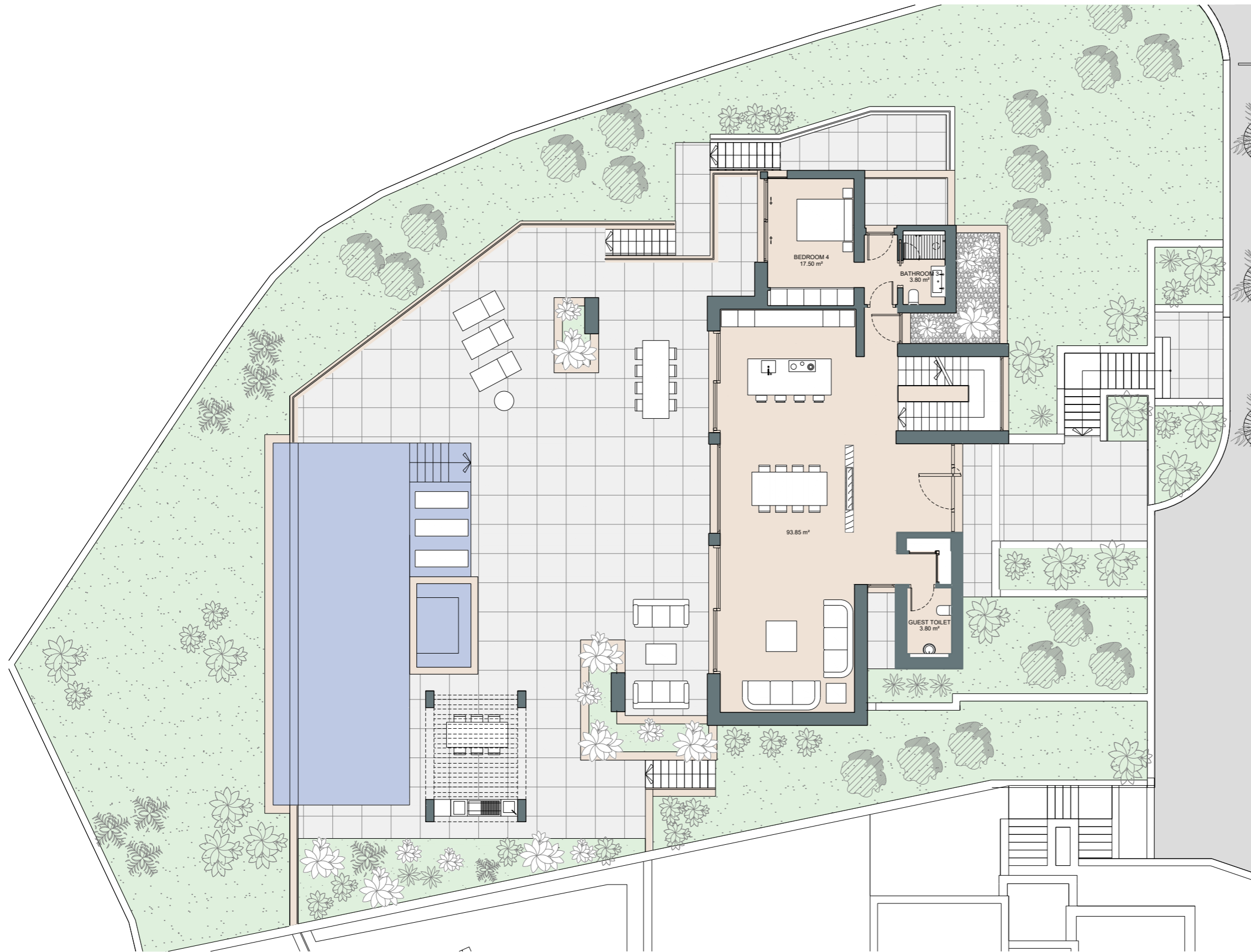
This document is for information only. The areas and measurements are approximate and may be modified for technical reasons and/or administrative issues. The room areas marked on the drawing are usable space.



GATE 3 | La Quinta, Marbella | Villa A | Ground floor



COGITARI HOMES



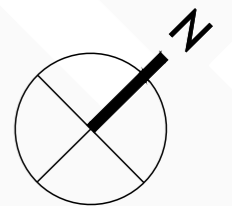
VILLA A. LA QUINTA

Built closed area	640,00 m ²
Covered terrace	42,20 m ²
Open terrace	303,90 m ²
Open terrace pergola	16,95 m ²
Total terrace	363,05 m ²
Pool	87,30 m ²
Total built area	1.036,80 m²



5 6 1.036,80 m² 3

1m 2m 3m 4m 5m
SCALE 1:150

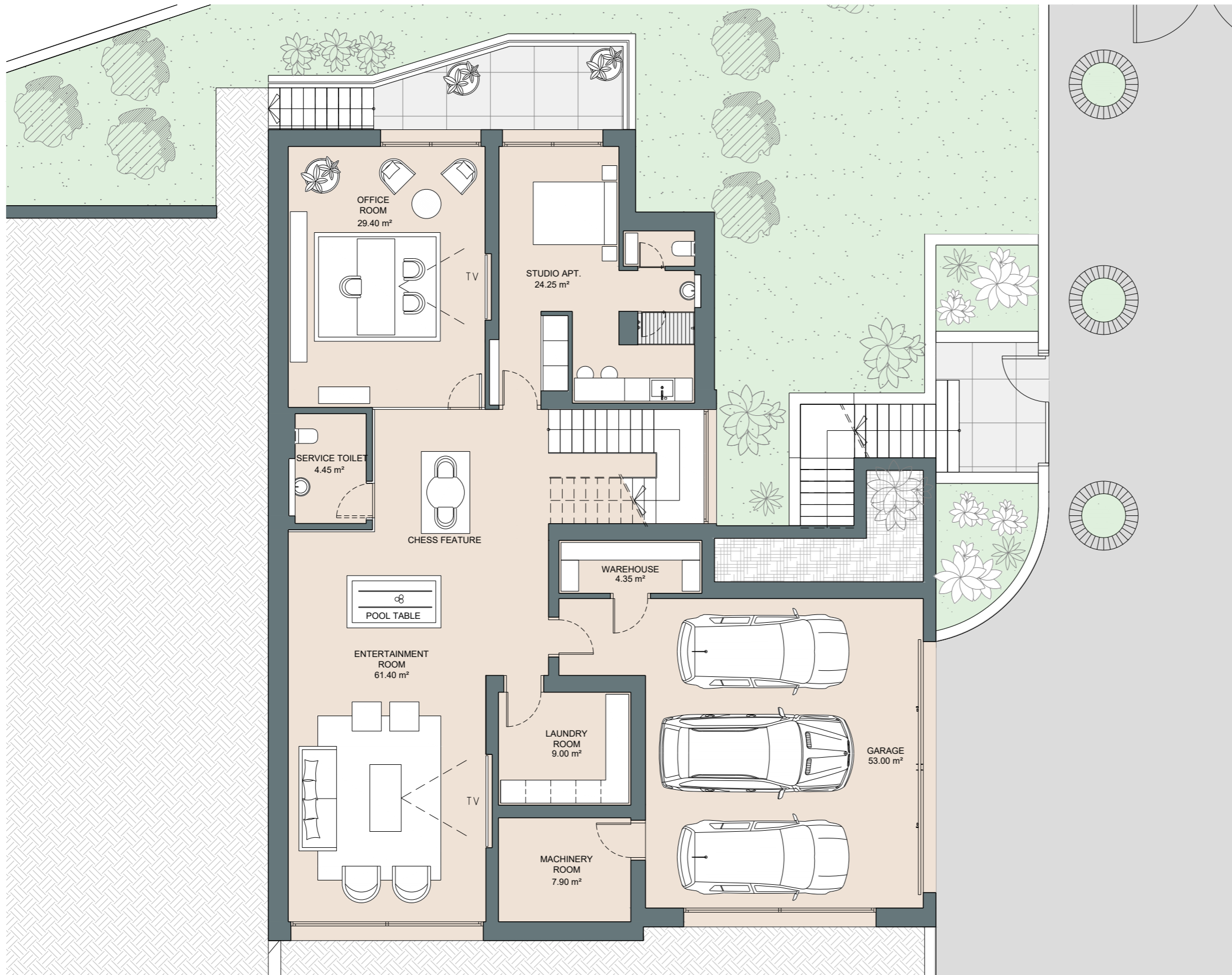


This document is for information only. The areas and measurements are approximate and may be modified for technical reasons and/or administrative issues. The room areas marked on the drawing are usable space.

GATE 3 | La Quinta, Marbella | Villa A | Entertainment level



COGITARI HOMES



VILLA A. LA QUINTA

Built closed area	640,00 m ²
Covered terrace	42,20 m ²
Open terrace	303,90 m ²
Open terrace pergola	16,95 m ²
Total terrace	363,05 m ²
Pool	87,30 m ²
Total built area	1.036,80 m²



5 6 1.036,80 m² 3

1m 2m 3m 4m 5m
SCALE 1:100

This document is for information only. The areas and measurements are approximate and may be modified for technical reasons and/or administrative issues. The room areas marked on the drawing are usable space.

