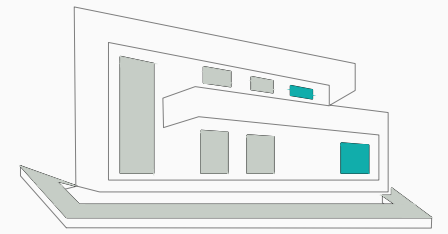


# VILLA ALCALÁ 70 *Site Plan*



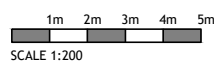
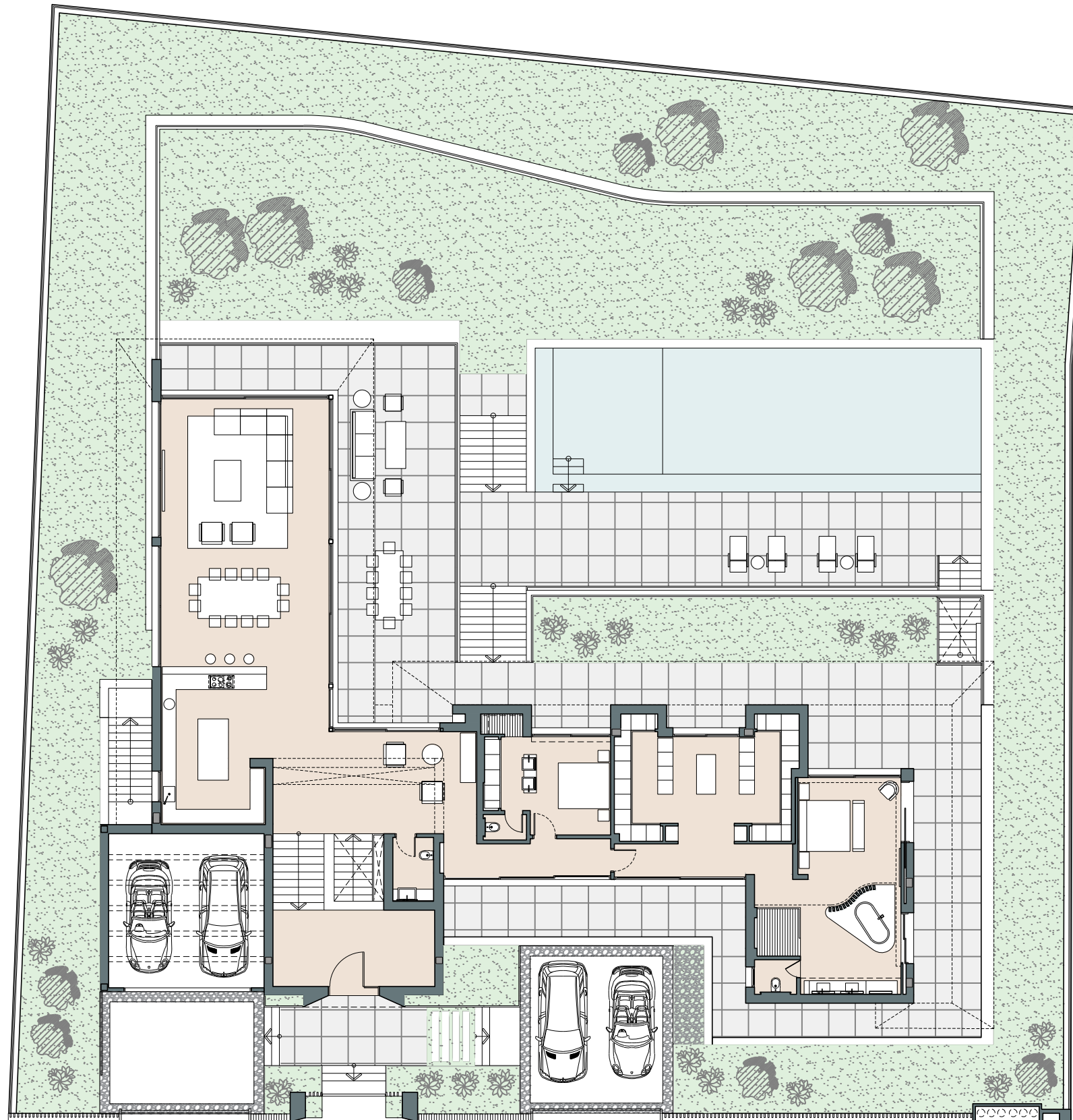
## COGITARI HOMES

### Villa Alcalá 70

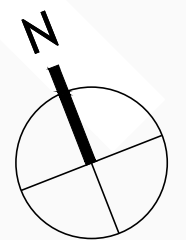
Built closed area	982,92 m <sup>2</sup>
Covered terrace	142,50 m <sup>2</sup>
Open terrace	288,27 m <sup>2</sup>
Open terrace pergola	98,10 m <sup>2</sup>
Total terrace	528,87 m <sup>2</sup>
Parking pergola	40,71 m <sup>2</sup>
Pool	98,93 m <sup>2</sup>
<b>Total built area</b>	<b>1.651,43 m<sup>2</sup></b>



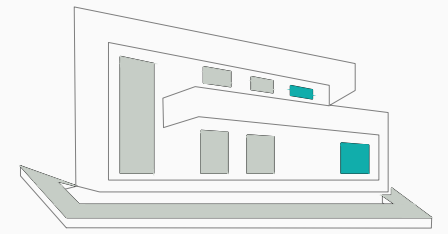
5 5 1.651,43 m<sup>2</sup> 4



This document is for information only. The areas and measurements are approximate and may be modified for technical reasons and/or administrative issues. The room areas marked on the drawing are usable space.



# VILLA ALCALÁ 70 *Ground floor*



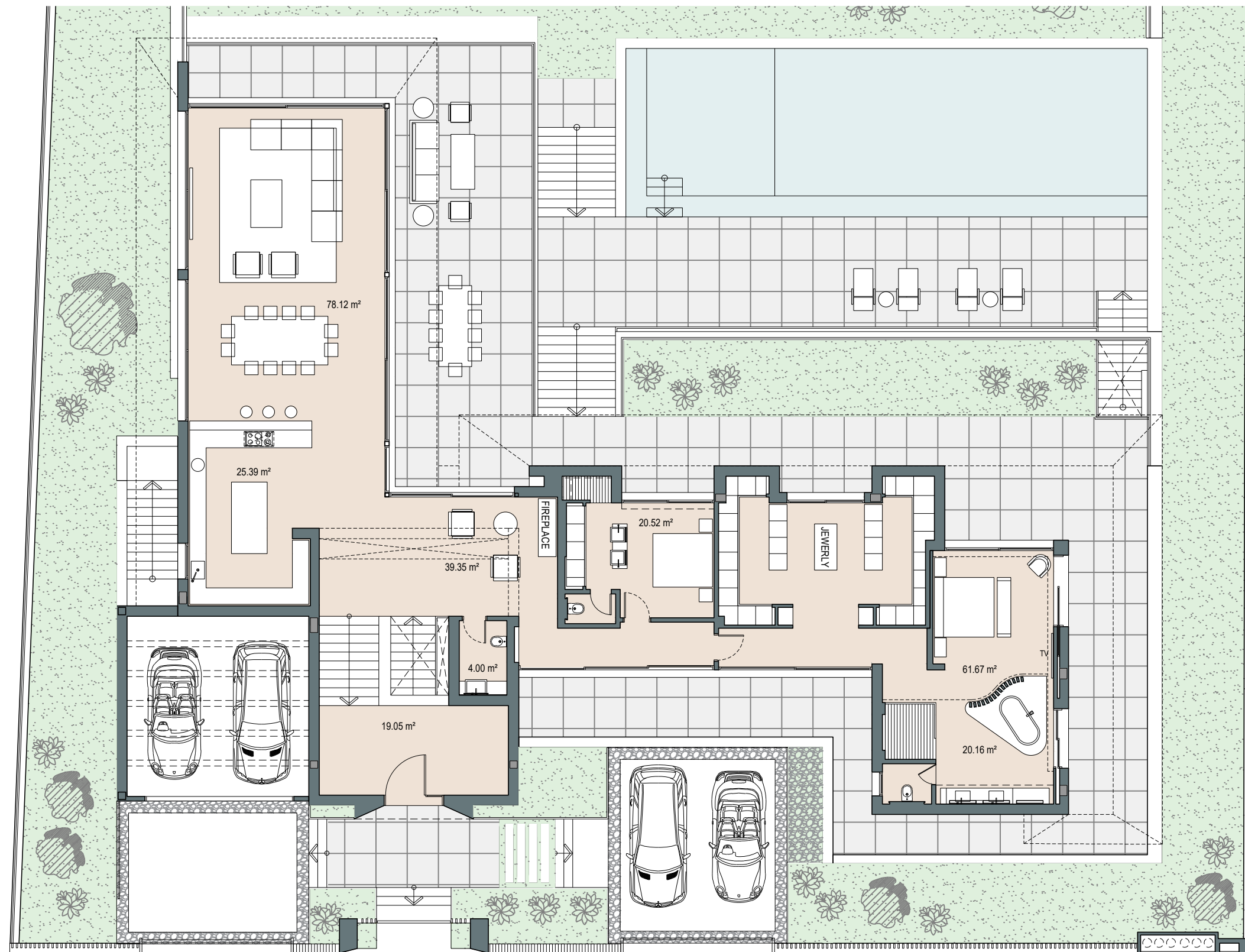
## COGITARI HOMES

### Villa Alcalá 70

Built closed area	982,92 m <sup>2</sup>
Covered terrace	142,50 m <sup>2</sup>
Open terrace	288,27 m <sup>2</sup>
Open terrace pergola	98,10 m <sup>2</sup>
Total terrace	528,87 m <sup>2</sup>
Parking pergola	40,71 m <sup>2</sup>
Pool	98,93 m <sup>2</sup>
<b>Total built area</b>	<b>1.651,43 m<sup>2</sup></b>

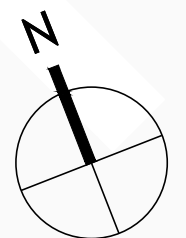


5 5 1.651,43 m<sup>2</sup> 4

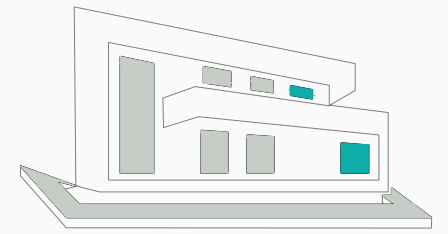


1m 2m 3m 4m 5m  
SCALE 1:150

This document is for information only. The areas and measurements are approximate and may be modified for technical reasons and/or administrative issues. The room areas marked on the drawing are usable space.



# VILLA ALCALÁ 70 *Entertainment level*



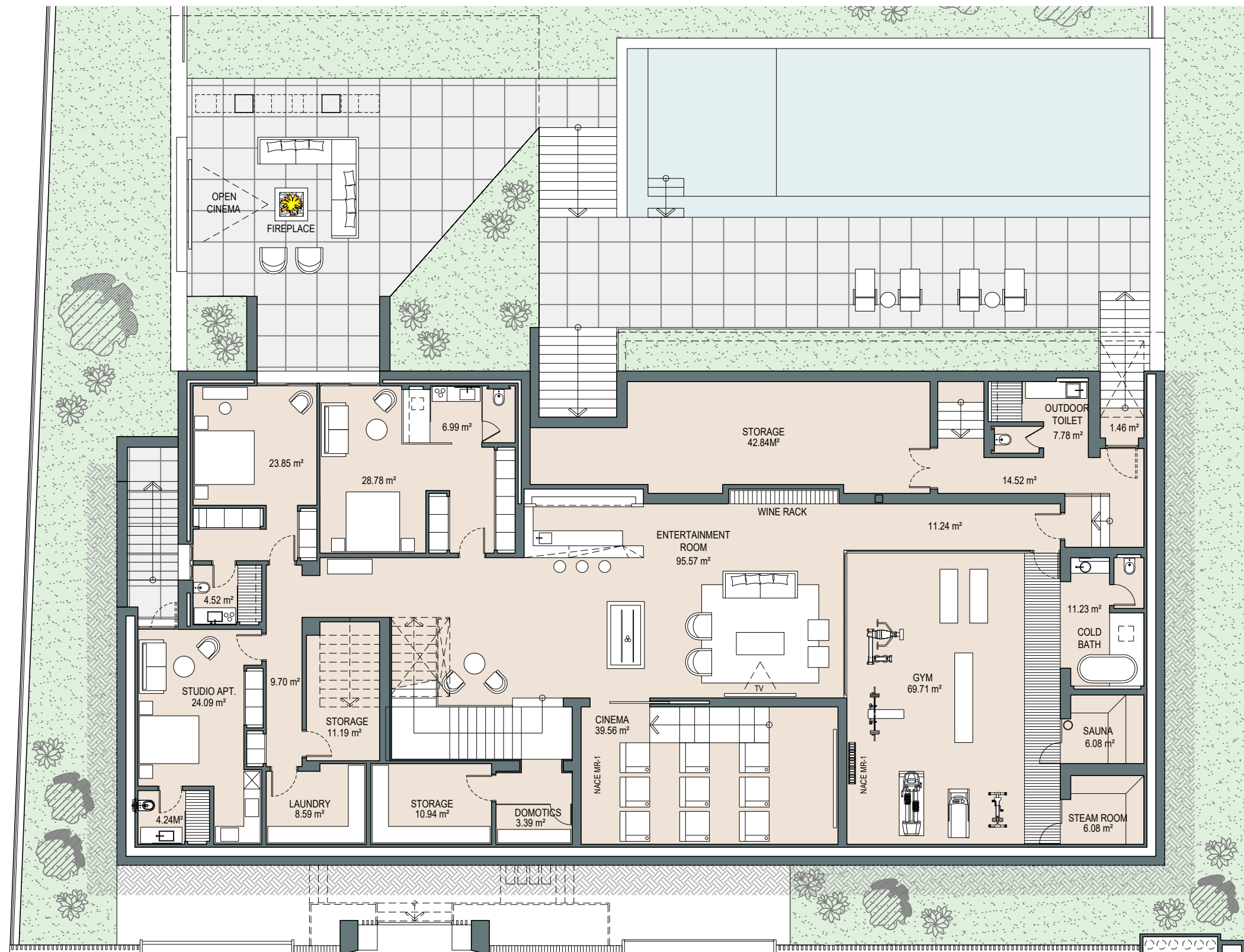
**COGITARI HOMES**

## Villa Alcalá 70

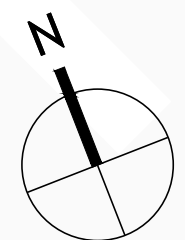
Built closed area	982,92 m <sup>2</sup>
Covered terrace	142,50 m <sup>2</sup>
Open terrace	288,27 m <sup>2</sup>
Open terrace pergola	98,10 m <sup>2</sup>
Total terrace	528,87 m <sup>2</sup>
Parking pergola	40,71 m <sup>2</sup>
Pool	98,93 m <sup>2</sup>
<b>Total built area</b>	<b>1.651,43 m<sup>2</sup></b>



5 5 1.651,43 m<sup>2</sup> 4

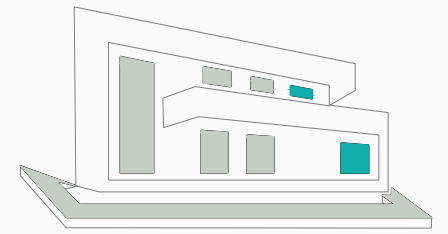


1m 2m 3m 4m 5m  
SCALE 1:150



This document is for information only. The areas and measurements are approximate and may be modified for technical reasons and/or administrative issues. The room areas marked on the drawing are usable space.

# VILLA ALCALÁ 70 *Basement -2*



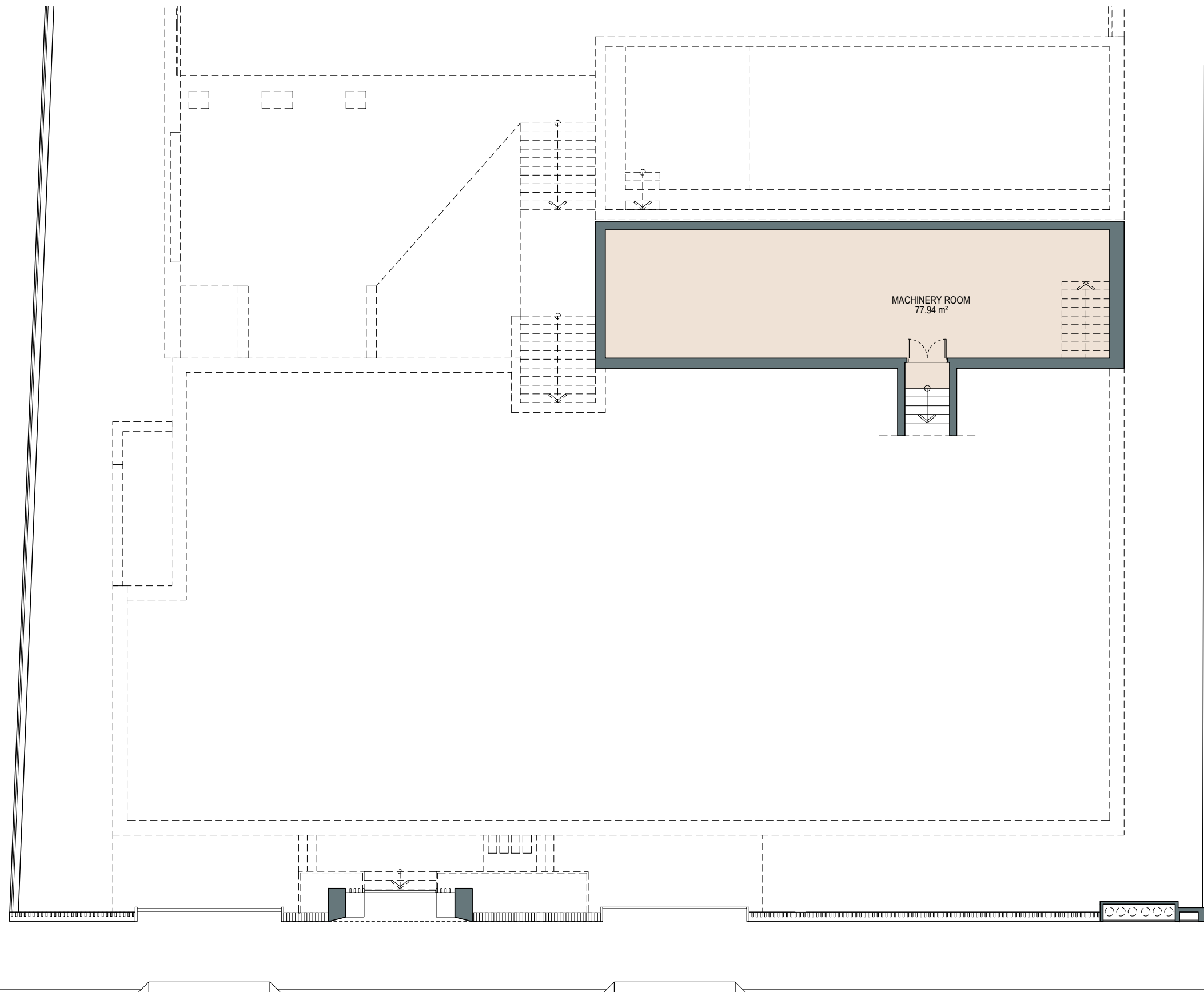
**COGITARI HOMES**

## Villa Alcalá 70

Built closed area	982,92 m <sup>2</sup>
Covered terrace	142,50 m <sup>2</sup>
Open terrace	288,27 m <sup>2</sup>
Open terrace pergola	98,10 m <sup>2</sup>
Total terrace	528,87 m <sup>2</sup>
Parking pergola	40,71 m <sup>2</sup>
Pool	98,93 m <sup>2</sup>
<b>Total built area</b>	<b>1.651,43 m<sup>2</sup></b>



5 5 1.651,43 m<sup>2</sup> 4



1m 2m 3m 4m 5m  
SCALE 1:150

This document is for information only. The areas and measurements are approximate and may be modified for technical reasons and/or administrative issues. The room areas marked on the drawing are usable space.

