







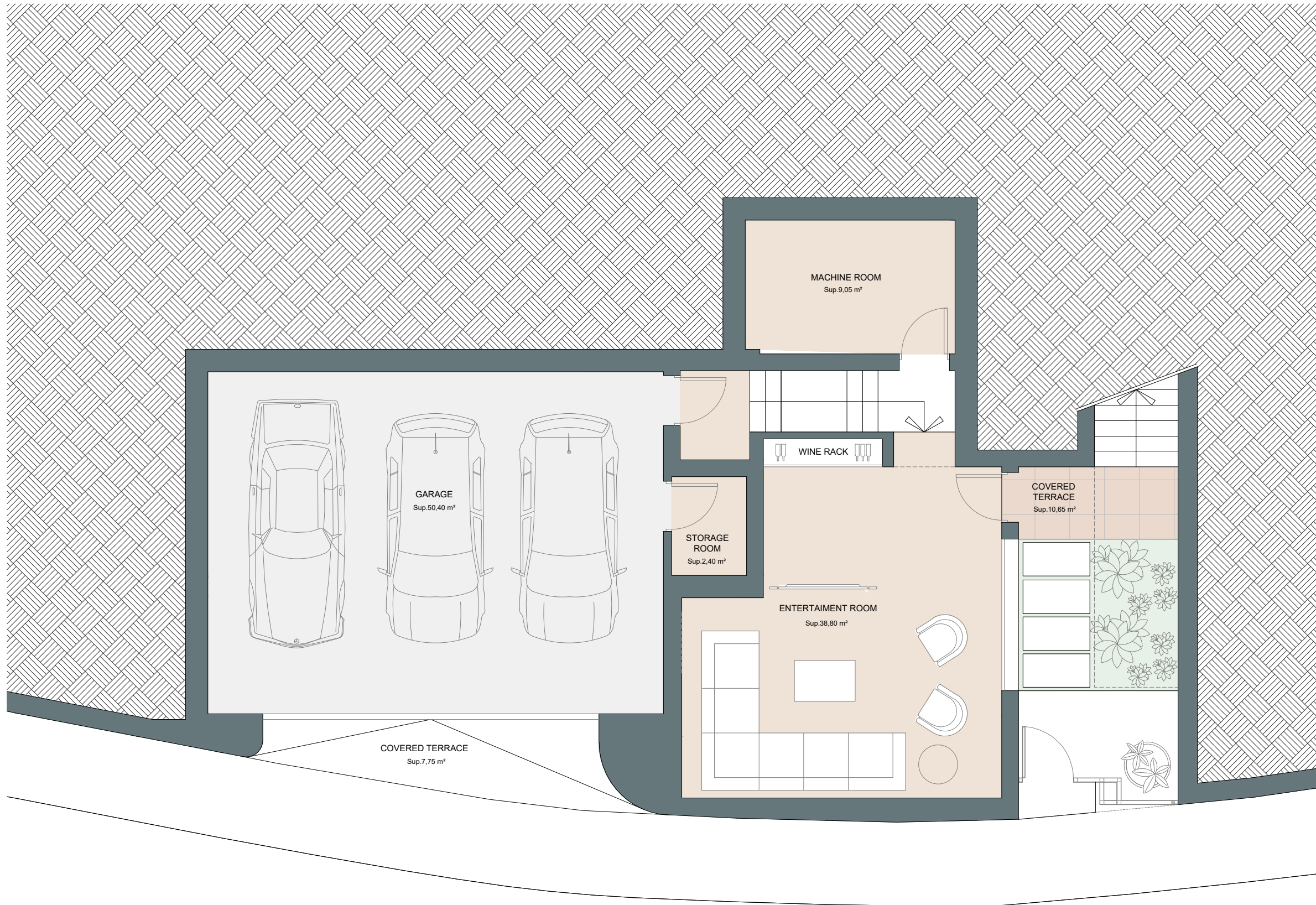
COGITARI HOMES

Villa 2

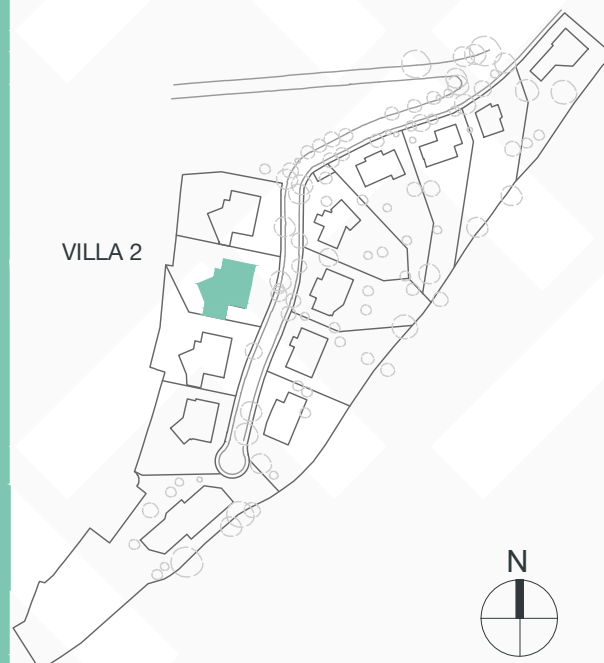
Built closed area	341,90 m ²
Covered terrace	41,05 m ²
Open terrace	209,45 m ²
Total terrace	250,50 m ²
Pool	37,25 m ²

Total built area 629,65 m²

 4
  3
  341,90 m²
 3



This document is for information only. The areas and measurements are approximate and may be modified for technical reasons and/or administrative issues. The room areas marked on the drawing are usable space.









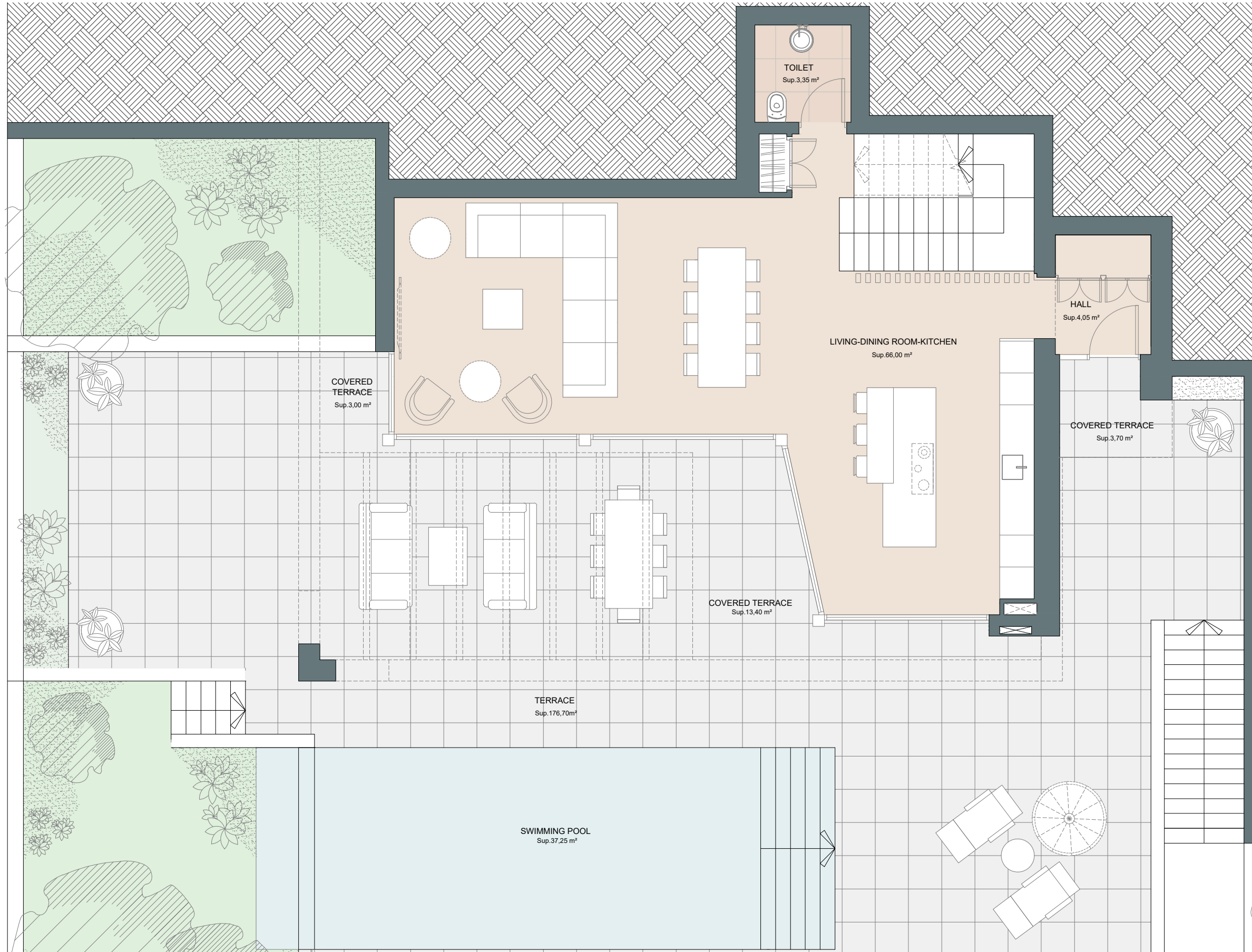
COGITARI HOMES

Villa 2

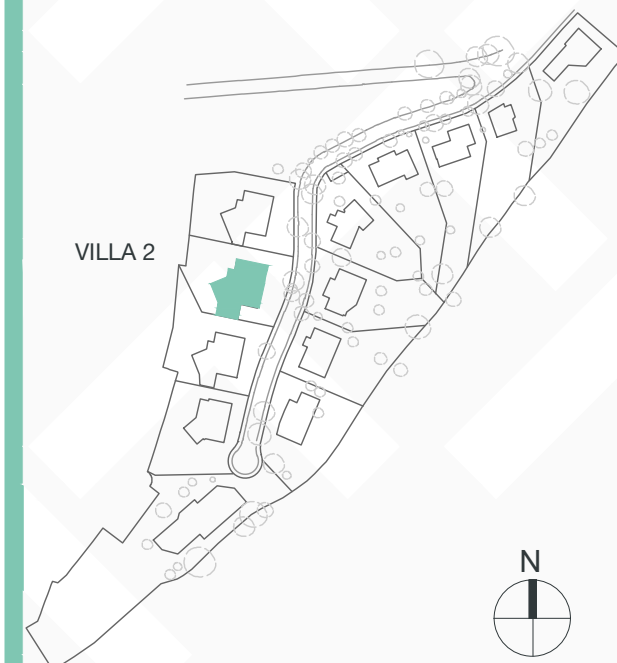
Built closed area	341,90 m ²
Covered terrace	41,05 m ²
Open terrace	209,45 m ²
Total terrace	250,50 m ²
Pool	37,25 m ²

Total built area 629,65 m²

 4
  3
  341,90 m²
 3



This document is for information only. The areas and measurements are approximate and may be modified for technical reasons and/or administrative issues. The room areas marked on the drawing are usable space.









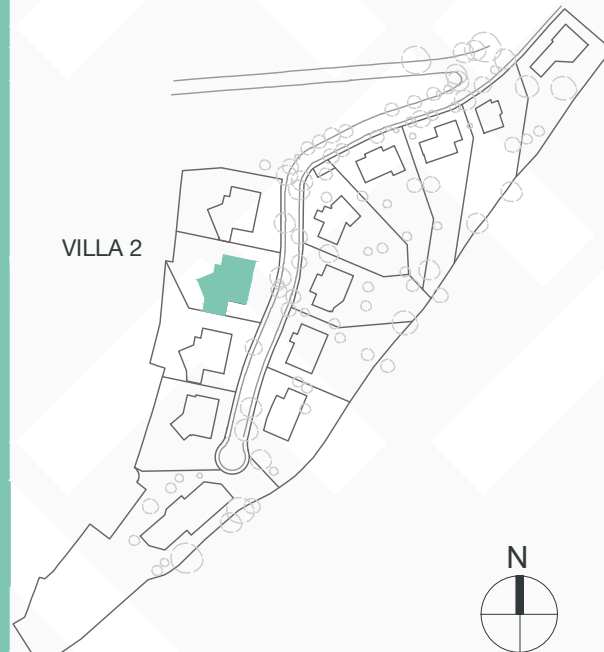
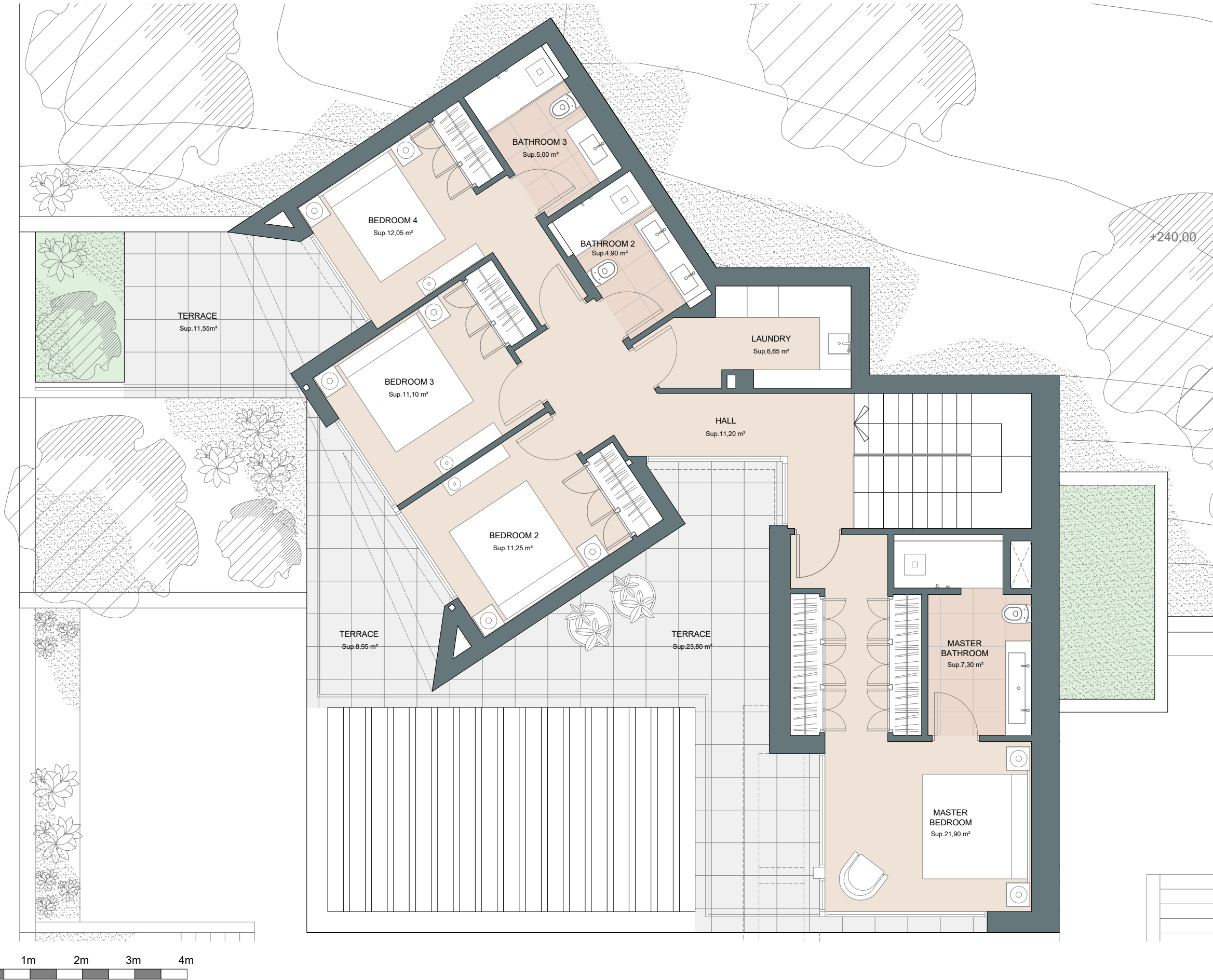
COGITARI HOMES

Villa 2

Built closed area	341,90 m ²
Covered terrace	41,05 m ²
Open terrace	209,45 m ²
Total terrace	250,50 m ²
Pool	37,25 m ²

Total built area 629,65 m²

 4
  3
  341,90 m²
 3



This document is for information only. The areas and measurements are approximate and may be modified for technical reasons and/or administrative issues. The room areas marked on the drawing are usable space.