







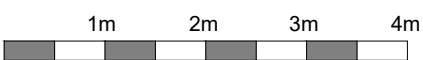
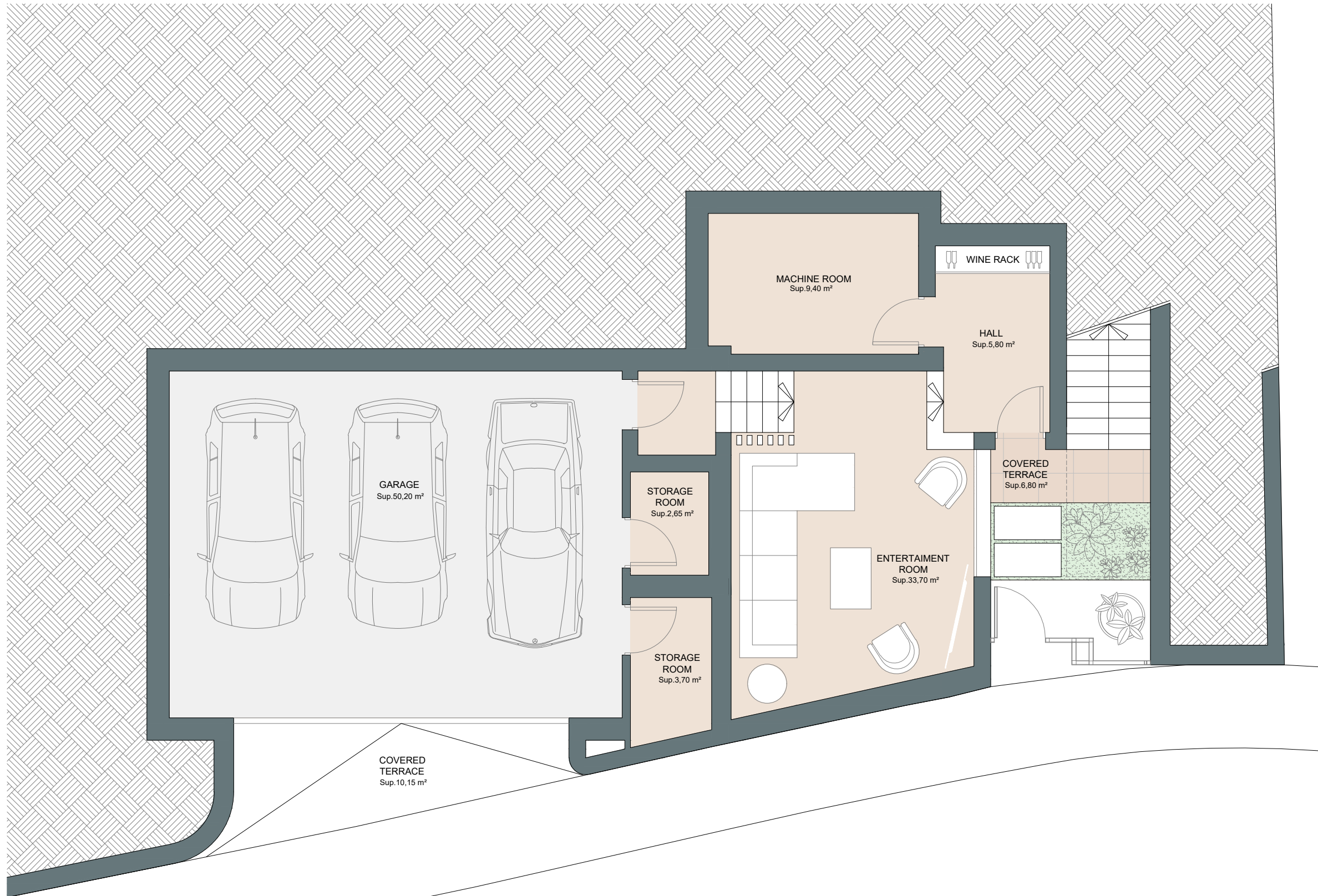
COGITARI HOMES

Villa 1

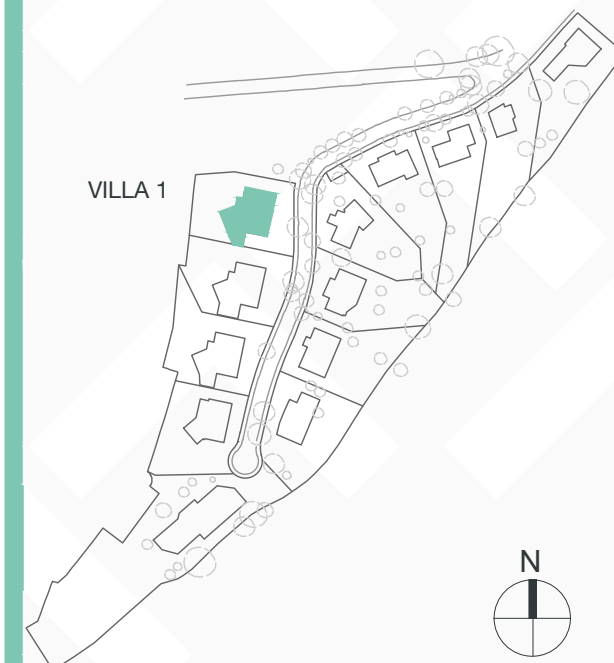
Built closed area	341,75 m ²
Covered terrace	36,40 m ²
Open terrace	247,00 m ²
Total terrace	283,40 m ²
Pool	37,25 m ²

Total built area 662,40 m²

 4
  3
  341,75 m²
  3



This document is for information only. The areas and measurements are approximate and may be modified for technical reasons and/or administrative issues. The room areas marked on the drawing are usable space.









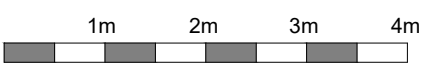
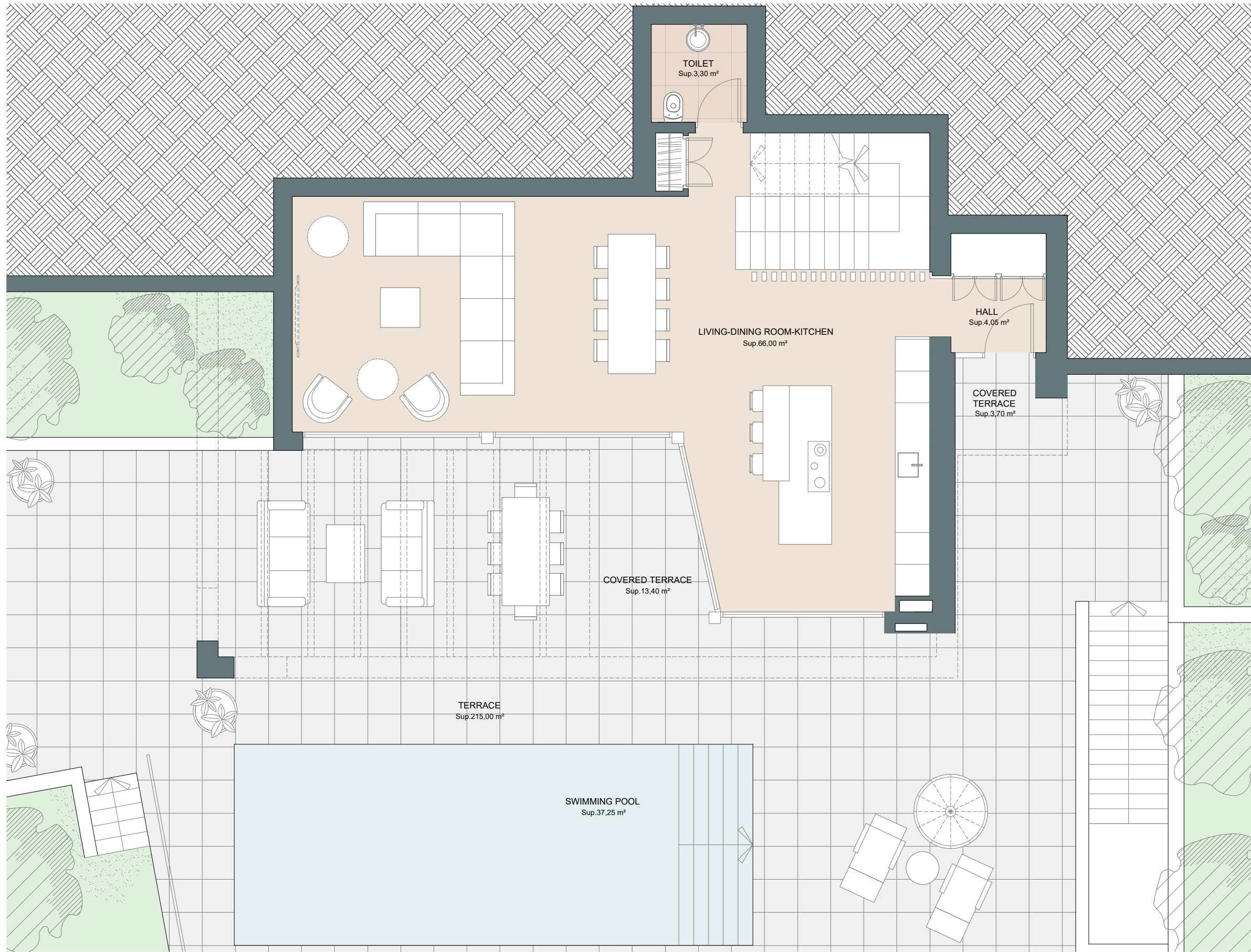
COGITARI HOMES

Villa 1

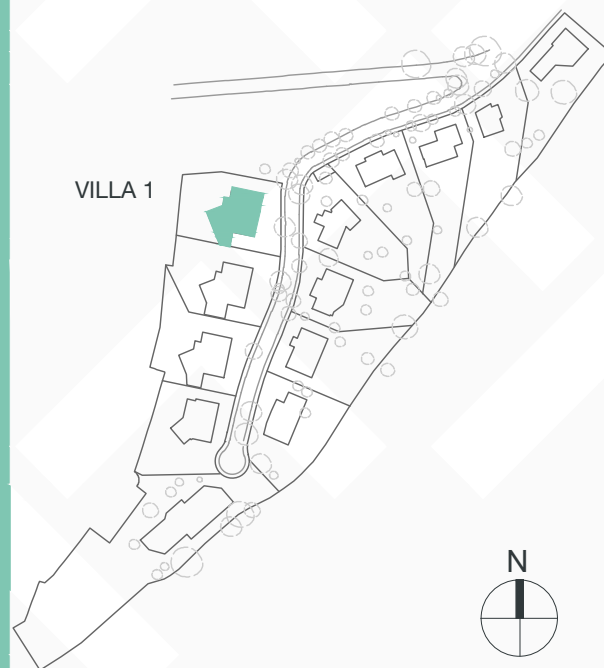
Built closed area	341,75 m ²
Covered terrace	36,40 m ²
Open terrace	247,00 m ²
Total terrace	283,40 m ²
Pool	37,25 m ²

Total built area 662,40 m²

 4
  3
  341,75 m²
 3



This document is for information only. The areas and measurements are approximate and may be modified for technical reasons and/or administrative issues. The room areas marked on the drawing are usable space.









COGITARI HOMES

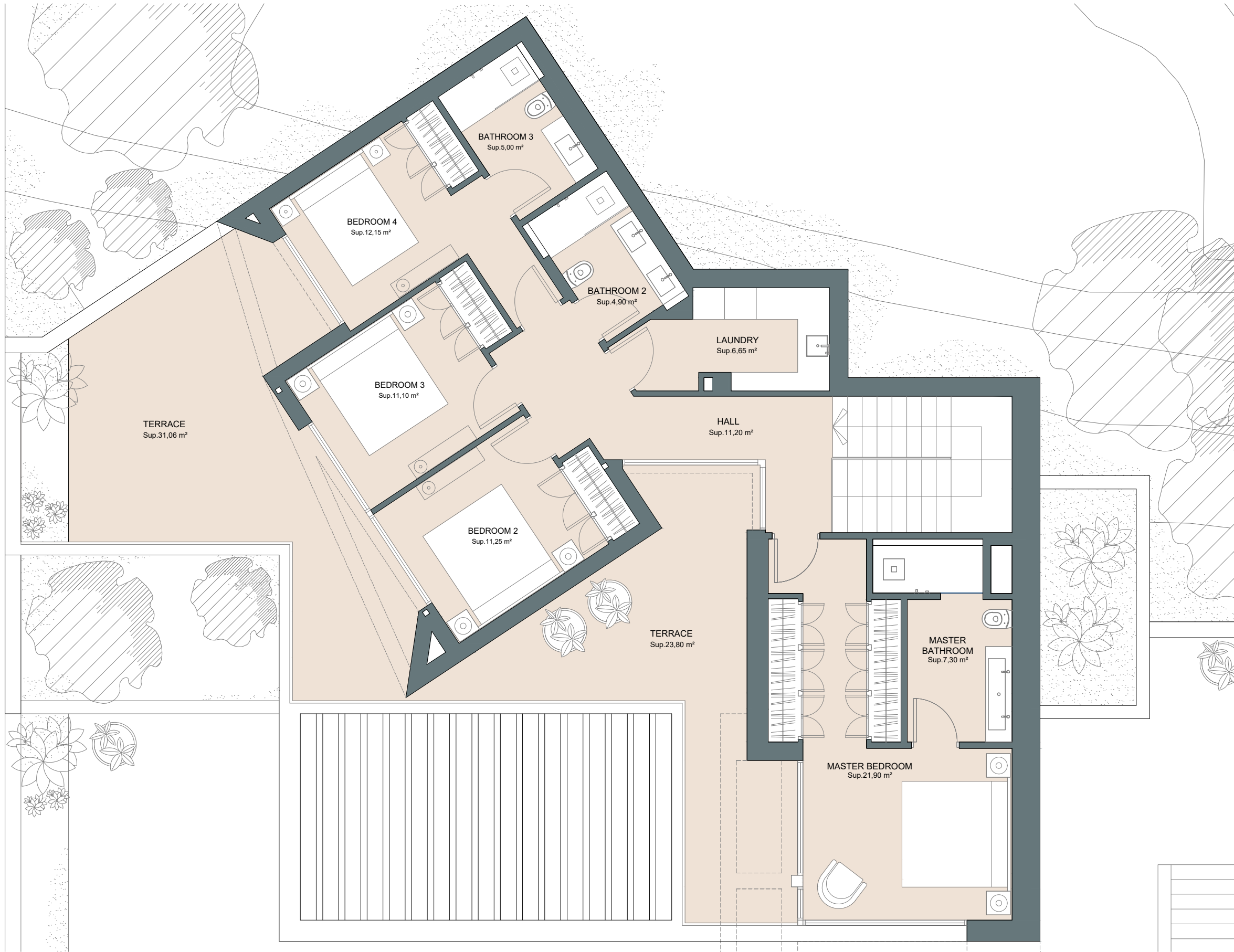
Villa 1

Built closed area	341,75 m ²
Covered terrace	36,40 m ²
Open terrace	247,00 m ²
Total terrace	283,40 m ²
Pool	37,25 m ²

Total built area 662,40 m²

4 3 341,75 m² 3



This document is for information only. The areas and measurements are approximate and may be modified for technical reasons and/or administrative issues. The room areas marked on the drawing are usable space.

